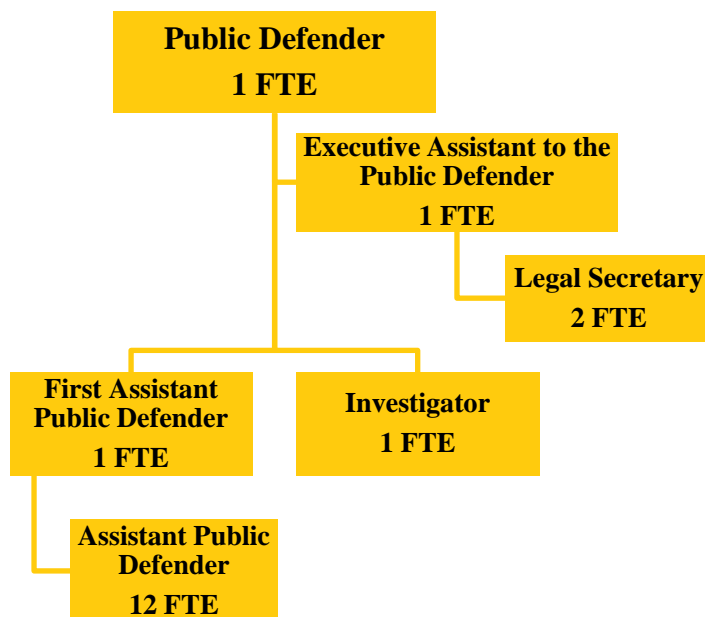


PUBLIC DEFENDER

Fund 080-036



Public Defender positions: 18 FTE

The office, position, and duties of the public defender are statutorily created and defined in the Illinois Counties Code Division 3-4 Public Defender and Appointed Counsel (55 ILCS 5/3-4).

MISSION STATEMENT

To effectively represent indigent persons in criminal, traffic, mental health, abuse/neglect, juvenile, and other miscellaneous cases in Champaign County.

BUDGET HIGHLIGHTS

Per Illinois law, two-thirds of the salary of the Public Defender is to be reimbursed by the State. With the State's financial situation, it is unclear whether the State will provide the full reimbursement.

Also, as a result of the public defender fees ordered by the judiciary, the amount collected has come in lower over the past few years. The budgeted amount for FY 2016 may not be met so the amount has been reduced for FY 2017.

FINANCIAL

Fund 080 Dept 036				2015 Actual	2016 Original	2016 Projected	2017 Budget
335	70	STATE SALARY REIMBURSEMENT		\$99,895	\$108,000	\$100,000	\$100,000
		FEDERAL, STATE & LOCAL SHARED REVENUE		\$99,895	\$108,000	\$100,000	\$100,000

Fund 080 Dept 036			2015 Actual	2016 Original	2016 Projected	2017 Budget
341	10	COURT FEES AND CHARGES	\$23,868	\$50,000	\$25,000	\$25,000
		FEES AND FINES	\$23,868	\$50,000	\$25,000	\$25,000
		REVENUE TOTALS	\$123,763	\$158,000	\$125,000	\$125,000
511	2	APPOINTED OFFICIAL SALARY	\$149,857	\$149,858	\$149,858	\$149,858
511	3	REG. FULL-TIME EMPLOYEES	\$947,841	\$942,400	\$943,828	\$958,250
		PERSONNEL	\$1,097,698	\$1,092,258	\$1,093,686	\$1,108,108
522	1	STATIONERY & PRINTING	\$0	\$500	\$500	\$500
522	2	OFFICE SUPPLIES	\$7,434	\$4,407	\$4,407	\$4,407
522	3	BOOKS,PERIODICALS & MAN.	\$624	\$525	\$525	\$525
522	15	GASOLINE & OIL	\$281	\$350	\$350	\$350
522	44	EQUIPMENT LESS THAN \$5000	\$0	\$450	\$820	\$820
		COMMODITIES	\$8,339	\$6,232	\$6,602	\$6,602
533	5	COURT REPORTING	\$1,729	\$900	\$900	\$900
533	7	PROFESSIONAL SERVICES	\$1,655	\$450	\$450	\$450
533	12	JOB-REQUIRED TRAVEL EXP	\$35	\$500	\$82	\$82
533	33	TELEPHONE SERVICE	\$2,960	\$1,900	\$1,900	\$1,900
533	40	AUTOMOBILE MAINTENANCE	\$311	\$150	\$150	\$150
533	42	EQUIPMENT MAINTENANCE	\$0	\$130	\$60	\$60
533	51	EQUIPMENT RENTALS	\$110	\$100	\$100	\$100
533	68	WITNESS EXPENSE	\$446	\$0	\$418	\$418
533	93	DUES AND LICENSES	\$4,705	\$5,187	\$5,187	\$5,187
533	94	INVESTIGATION EXPENSE	\$195	\$2,500	\$2,500	\$2,500
533	95	CONFERENCES & TRAINING	\$0	\$3,000	\$2,700	\$2,700
534	37	FINANCE CHARGES,BANK FEES	\$78	\$0	\$0	\$0
		SERVICES	\$12,224	\$14,817	\$14,447	\$14,447
		EXPENDITURE TOTALS	\$1,118,261	\$1,113,307	\$1,114,735	\$1,129,157

EXPENSE PER CAPITA (IN ACTUAL DOLLARS)

FY2013	FY2014	FY2015	FY2016	FY2017
\$5.29	\$5.25	\$5.61	\$5.46	\$5.62

FTE HISTORY

FY2013	FY2014	FY2015	FY2016	FY2017
17	18	18	18	18

ALIGNMENT to STRATEGIC PLAN

County Board Goal 1 – Champaign County is committed to being a high performing, open and transparent local government organization

- Provide flexibility in scheduling and communicating with clients to meet their needs
- Provide quality services delivered in a professional manner
- Comply with ethical and continuing legal education requirements established by the Illinois Supreme Court

County Board Goal 3 –Champaign County promotes a safe, just and healthy community

- To zealously defend the rights of indigent persons charged with crimes, and those persons for whom the Court appoints the Public Defender to represent
- Work with justice stakeholders to deal with issues of mutual concern such as technology in the courtroom and jail overcrowding.

DESCRIPTION

The Public Defender's Office represents individuals who are indigent and cannot afford to hire counsel of their choosing. Most of the cases assigned to the office involve criminal defendants in felony, misdemeanor, traffic, and juvenile delinquency cases. The office also represents parties in abuse and neglect cases and, occasionally, in post-conviction, mental health commitment, sexually dangerous person, and child support contempt cases. The Public Defender's Office has fourteen full-time attorneys, three full-time support staff and one full-time investigator.

OBJECTIVES

To effectively represent indigent persons during all phases of a court case from arraignment through post-conviction proceedings.

PERFORMANCE INDICATORS

Indicator	2015 Actual	2016 Projected	2017 Budgeted
FELONY CASES (criminal & felony traffic – filed as CF)			
Filed with the Circuit Clerk	1,823	1,826	1,825
Opened by the Public Defender **	1,848	1,817	1,830
Closed by the Public Defender **	1,636	1,582	1,600
MISDEMEANOR CASES (criminal only – filed as CM)			
Filed with the Circuit Clerk	1,340	1,286	1,300
Opened by the Public Defender	1,180	1,090	1,150
Closed by the Public Defender	1,143	1,082	1,100
TRAFFIC CASES (misdemeanor/DUI – filed as TR and DT)			
Filed with the Circuit clerk – TR	18,596	17,950	18,000
Filed with the Circuit clerk – DUIs – DT	664	534	575
Opened by the Public Defender ***	2,166	2,434	2,400
Closed by the Public Defender ***	2,284	2,148	2,200
JUVENILE DELINQUENCY CASES (filed as JD)			
Filed with the Circuit Clerk	269	228	250

Indicator	2015 Actual	2016 Projected	2017 Budgeted
Opened by the Public Defender	252	230	250
Closed by the Public Defender	257	252	250
JUVENILE ABUSE/NEGLECT CASES (filed as JA)			
Filed with the Circuit Clerk	62	50	60
Opened by the Public Defender	87	89	85
Closed by the Public Defender	81	89	85

*Projected numbers for the Circuit Clerk are based on court filings from January to June 2016 (six months). Projected numbers for the Public Defender are based on reports filed with the County Board for January to May 2016 (five months).

**Public Defender numbers may exceed actual number of cases filed with the Circuit Clerk because the PDO “reopens” previously closed files when the State files a petition to revoke a sentence, etc. In abuse/neglect, two attorneys are appointed in the same case so numbers reflect multiple office “openings” in the same case.

***Only TR cases are reflected here since DUIs can be filed as DT or CF and are handled by multiple attorneys.