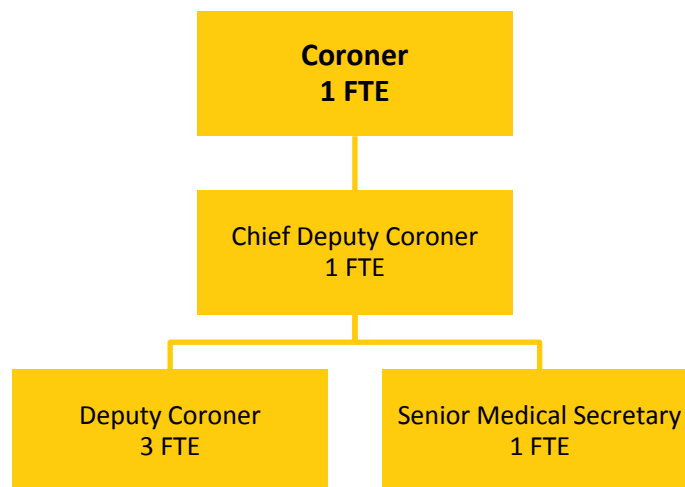


CORONER

Fund 080-042



The position and duties of the Coroner are statutorily defined in the Illinois Counties Code (55 ILCS 5/3-3).

MISSION STATEMENT

To investigate the cause and manner of death of anyone who falls under the jurisdiction of the Coroner as prescribed by law. The Coroner's Office sustains teamwork in medico-legal death investigations, delivered with compassion and respect, for the health and well-being of the people of Champaign County.

BUDGET HIGHLIGHTS

The Coroner's Office has experienced a continued increase in the number of non-natural death investigations during the first half of 2016. Deaths resulting from illicit drug use continue to rise and deaths requiring an autopsy have risen substantially over this same time period in 2015. Revenue from statutory fees remains consistent with 2015 totals however; morgue use fees appear to be slightly lower compared to last year.

The Coroner's Office received a \$5000 grant through the Regional Healthcare Coalition to purchase equipment for our disaster response trailer in 2016. Equipment purchased for the disaster trailer will assist the Champaign County Coroner and several other Illinois Coroners with responding to incidents involving multiple fatalities.

FINANCIAL

Fund 080 Dept 042			2015 Actual	2016 Original	2016 Projected	2017 Budget
334	42	IL DP PUB HLTH-GEN RV GRT	\$0	\$4,625	\$9,625	\$4,625
335	71	STATE REV-SALARY STIPENDS	\$6,500	\$6,500	\$6,500	\$6,500
		FEDERAL, STATE & LOCAL SHARED REVENUE	\$6,500	\$11,125	\$16,125	\$11,125
341	41	CORONER STATUTORY FEES	\$46,393	\$40,200	\$42,000	\$41,000
341	42	REIMB OF CORONER COSTS	\$65,067	\$66,600	\$56,000	\$60,000
FY2017 Budget			218			Coroner
Champaign County, Illinois						General Fund 080-042

Fund 080 Dept 042			2015 Actual	2016 Original	2016 Projected	2017 Budget
		FEES AND FINES	\$111,460	\$106,800	\$98,000	\$101,000
369	90	OTHER MISC. REVENUE	\$70	\$0	\$0	\$0
		MISCELLANEOUS	\$70	\$0	\$0	\$0
		REVENUE TOTALS	\$118,030	\$117,925	\$114,125	\$112,125
511	1	ELECTED OFFICIAL SALARY	\$86,328	\$86,328	\$86,328	\$89,954
511	3	REG. FULL-TIME EMPLOYEES	\$195,914	\$201,038	\$204,302	\$208,496
511	5	TEMP. SALARIES & WAGES	\$25,847	\$33,963	\$33,963	\$33,963
511	9	OVERTIME	\$9,462	\$6,450	\$6,450	\$6,450
511	40	STATE-PAID SALARY STIPEND	\$6,500	\$6,500	\$6,500	\$6,500
513	20	EMPLOYEE DEVELOPMNT/RECOG	\$199	\$0	\$0	\$0
513	21	EMPLOYEE PHYSICALS/LAB PERSONNEL	\$1,526 \$325,776	\$1,200 \$335,479	\$1,100 \$338,643	\$1,200 \$346,563
522	1	STATIONERY & PRINTING	\$380	\$200	\$200	\$200
522	2	OFFICE SUPPLIES	\$1,251	\$1,200	\$1,200	\$1,200
522	3	BOOKS,PERIODICALS & MAN.	\$2,519	\$600	\$600	\$600
522	6	POSTAGE, UPS, FED EXPRESS	\$500	\$500	\$1,000	\$500
522	15	GASOLINE & OIL	\$4,786	\$6,000	\$3,500	\$5,535
522	19	UNIFORMS	\$805	\$120	\$120	\$120
522	44	EQUIPMENT LESS THAN \$5000	\$10,342	\$4,625	\$9,625	\$4,625
522	90	ARSENAL & POLICE SUPPLIES	\$1,113	\$500	\$120	\$500
522	93	OPERATIONAL SUPPLIES COMMODITIES	\$17,967 \$39,663	\$13,000 \$26,745	\$13,000 \$29,365	\$13,000 \$26,280
533	6	MEDICAL/DENTAL/MENTL HLTH	\$107,442	\$122,000	\$134,000	\$123,200
533	22	LABORATORY FEES	\$32,175	\$34,600	\$37,000	\$34,600
533	29	COMPUTER/INF TCH SERVICES	\$1,671	\$1,200	\$1,500	\$1,450
533	33	TELEPHONE SERVICE	\$4,484	\$4,500	\$4,500	\$4,500
533	36	WASTE DISPOSAL & RECYCLNG	\$5,117	\$4,732	\$4,732	\$4,732
533	40	AUTOMOBILE MAINTENANCE	\$1,084	\$975	\$700	\$975
533	42	EQUIPMENT MAINTENANCE	\$677	\$1,113	\$1,285	\$1,113
533	51	EQUIPMENT RENTALS	\$129	\$120	\$120	\$120
533	52	OTHER SERVICE BY CONTRACT	\$2,924	\$2,928	\$2,940	\$2,928
533	93	DUES AND LICENSES	\$770	\$760	\$801	\$775
533	94	INVESTIGATION EXPENSE	\$80	\$0	\$80	\$0
533	95	CONFERENCES & TRAINING	\$3,544	\$4,000	\$4,000	\$4,000
534	37	FINANCE CHARGES,BANK FEES	\$0	\$0	\$84	\$200
534	63	INDIGENT BURIAL SERVICES	\$1,592 \$161,689	\$1,500 \$178,428	\$1,500 \$193,242	\$1,500 \$180,093
		EXPENDITURE TOTALS	\$527,128	\$540,652	\$561,250	\$552,936

EXPENSE PER CAPITA (IN ACTUAL DOLLARS)

FY2013	FY2014	FY2015	FY2016	FY2017
\$2.46	\$2.48	\$2.57	\$2.68	\$2.75

FULL TIME EMPLOYEE HISTORY

FY2013	FY2014	FY2015	FY2016	FY2017
5	5	6	6	6

ALIGNMENT to STRATEGIC PLAN

County Board Goal 1 – Champaign County is committed to being a high performing, open and transparent local government organization

- The coroner's office will strive to provide complete and full transparency of all coroner operations subject only to state and federal statutory restrictions.

County Board Goal 2 – Champaign County maintains high quality public facilities and highways and provides a safe rural transportation system and infrastructure

- The coroner's office will continue to be recognized as a premier morgue facility in Illinois for conducting post mortem examinations required by state statute.

County Board Goal 3 –Champaign County promotes a safe, just and healthy community

- The coroner's office will continue to be involved in disaster planning/response with county and state agencies.

DESCRIPTION

The coroner investigates and determines the cause and manner of death for every person in his county whose death is suspected of being: a sudden or violent death; a death where the circumstances are suspicious, obscure, mysterious or otherwise unexplained; a death where addiction to alcohol or any drug may have been a contributing factor; and deaths unattended by a licensed physician. The coroner may conduct inquests into deaths falling under his jurisdiction. The role of the coroner in a mass fatality incident is expanded to include recovery and identification of remains

OBJECTIVES

1. To provide comprehensive investigations into deaths falling under the coroner's authority
2. To conduct inquests on unnatural and questionable deaths when necessary
3. To act in the public interest whenever death occurs
4. To review and investigate all deaths prior to issuing cremation permits
5. To issue temporary and permanent death certificates in a timely manner
6. To assist the public with information relating to organ and tissue donation; SIDS; Do Not Resuscitate Orders (DNR's); and Health Care Power of Attorney (HCPOA)
7. To continuously update training, education, and preparedness for mass fatality incidents

PERFORMANCE INDICATORS

Indicator	FY2015 Actual	FY2016 Projected	FY2017 Budgeted
Unnatural/questionable deaths investigated	180	264	180
Natural deaths investigated and/or reviewed	1,582	1,560	1,600

Indicator	FY2015 Actual	FY2016 Projected	FY2017 Budgeted
Deaths requiring autopsy	119	172	150
Deaths requiring toxicology testing	177	244	180
Cremation permits issued	843	940	890
Hours spend on emergency preparedness	12	16	10