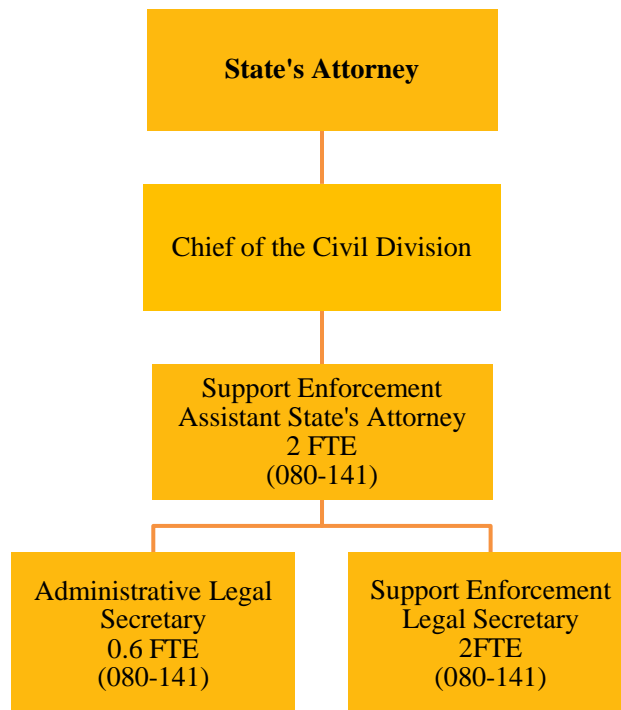


# STATE'S ATTORNEY SUPPORT ENFORCEMENT

## Fund 080-141



State's Attorney Support Enforcement (080-141) positions: 4.6 FTE

### MISSION STATEMENT

*To provide services to custodial parents and guardians and the Department of Children and Family Services (DCFS) through a partnership with the Illinois Department of Healthcare and Family Services (IDHFS) in the establishment of paternity, establishment of child support orders, modification of child support, enrollment and enforcement of Uniform Interstate Family Support Act (UIFSA) and administrative support orders, and enforcement of existing child support orders.*

### BUDGET HIGHLIGHTS

Cuts in state funding have required this division to make similar cuts as required by other county departments. The division continues to work as required to fulfill the obligations under the contract with IDHFS. The projected FY16 budget reflects revenue received from IDHFS in 2016 for work performed in 2015.

### FINANCIAL

Fund 080 Dept 141			2015 Actual	2016 Original	2016 Projected	2017 Budget
331	25	HHS-CHLD SUP ENF TTL IV-D	\$124,922	\$189,178	\$273,782	\$189,178
334	41	IL DPT HLTHCARE & FAM SRV	\$64,354	\$97,456	\$141,039	\$97,456
		FEDERAL, STATE & LOCAL SHARED REVENUE	\$189,276	\$286,634	\$414,821	\$286,634

FY2017 Budget  
Champaign County, Illinois

192

State's Attorney Support Enforcement  
General Fund 080-141

Fund 080 Dept 141			2015 Actual	2016 Original	2016 Projected	2017 Budget
<b>REVENUE TOTALS</b>			<b>\$189,276</b>	<b>\$286,634</b>	<b>\$414,821</b>	<b>\$286,634</b>
511	3	REG. FULL-TIME EMPLOYEES	\$200,723	\$186,021	\$187,333	\$190,516
511	4	REG. PART-TIME EMPLOYEES	\$325	\$18,194	\$18,604	\$18,954
513	6	EMPLOYEE HEALTH/LIFE INS PERSONNEL	\$0 \$201,048	\$13,300 \$217,515	\$13,300 \$219,237	\$13,300 \$222,770
522	2	OFFICE SUPPLIES	\$4,406	\$7,500	\$7,500	\$7,500
522	3	BOOKS,PERIODICALS & MAN.	\$1,582	\$6,000	\$6,000	\$6,000
522	6	POSTAGE, UPS, FED EXPRESS	\$213	\$7,500	\$7,500	\$7,500
522	44	EQUIPMENT LESS THAN \$5000 COMMODITIES	\$1,706 \$7,907	\$7,500 \$28,500	\$7,500 \$28,500	\$7,500 \$28,500
533	1	AUDIT & ACCOUNTING SERVCS	\$0	\$7,500	\$7,500	\$7,500
533	5	COURT REPORTING	\$9	\$3,000	\$3,000	\$3,000
533	7	PROFESSIONAL SERVICES	\$4,994	\$0	\$6,151	\$0
533	29	COMPUTER/INF TCH SERVICES	\$0	\$7,500	\$7,500	\$7,500
533	33	TELEPHONE SERVICE	\$695	\$2,500	\$2,500	\$2,500
533	42	EQUIPMENT MAINTENANCE	\$203	\$4,000	\$4,000	\$4,000
533	70	LEGAL NOTICES,ADVERTISING	\$0	\$1,000	\$1,000	\$1,000
533	85	PHOTOCOPY SERVICES	\$0	\$5,000	\$1,000	\$5,000
533	93	DUES AND LICENSES	\$764	\$1,500	\$1,500	\$1,500
533	94	INVESTIGATION EXPENSE	\$8	\$0	\$0	\$0
533	95	CONFERENCES & TRAINING SERVICES	\$770 \$7,443	\$3,000 \$35,000	\$3,000 \$37,151	\$3,000 \$35,000
544	33	OFFICE EQUIPMENT & FURNIS CAPITAL	\$0 \$0	\$7,500 \$7,500	\$5,349 \$5,349	\$7,500 \$7,500
<b>EXPENDITURE TOTALS</b>			<b>\$216,398</b>	<b>\$288,515</b>	<b>\$290,237</b>	<b>\$293,770</b>

### ***FULL TIME EMPLOYEE HISTORY***

<b>FY2013</b>	<b>FY2014</b>	<b>FY2015</b>	<b>FY2016</b>	<b>FY2017</b>
5.1	5	4.6	4.6	4.6

### ***DESCRIPTION***

The Support Enforcement Division, through a contract with the IDHFS, represents the State of Illinois in child support enforcement cases on behalf of indigent custodial parents in Champaign County. Court cases can continue from the birth of the child through the child's 18<sup>th</sup> birthday. Court responsibilities include establishment of paternity, determination of initial child support, modification or abatement of child support, and the collection of delinquent child support through employment search orders and petitions for findings

of contempt. Court responsibilities also include establishment and enforcement of dependent medical insurance orders.

### ***OBJECTIVES***

The Support Enforcement Division has a contract with the IDHFS through which the division represents the IDHFS in the establishment of paternity; establishment of child support orders; modification of child support; enrollment and enforcement of UIFSA and administrative support orders; and enforcement of existing child support orders. The contract sets forth timetables, guidelines, and requirements as to how these services are to be performed.

### ***PERFORMANCE INDICATORS***

<b>Indicator</b>	<b>FY2015 Actual</b>	<b>FY2016 Projected</b>	<b>FY2017 Budgeted</b>
New cases filed	611	450	550