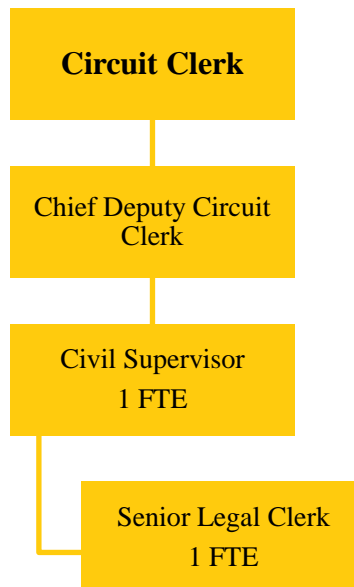


CHILD SUPPORT SERVICE

Fund 617-030



Circuit Clerk child support service fund position: 2 FTE

This Fund is established by an annual fee of \$36 assessed to the payors of child support. It is authorized by 705 ILCS 105/27.1a(bb)(4), and required by County Board Ordinance No. 2580. Expenditures from this fund are for maintaining child support records and the processing of support orders to the State of Illinois KIDS system and the recording of payments issued by the State Disbursement Unit for the official record of the Court.

BUDGET HIGHLIGHTS

The collection of this fee was suspended for two full calendar years. After reviewing the statute and County Board Ordinance, the decision was reached that the Clerk did not have the authority to suspend the collection of this fee, and the collection of the fee has resumed. Additionally, the Family (F) case volume has more than doubled since 2008, along with the associated responsibilities. With continued decreases in the State Healthcare and Family Services (HFS) grant, this fund has become increasingly significant to the overall fiscal health of the Circuit Clerk's Office.

FINANCIAL

Fund 617Dept 030				2015 Actual	2016 Original	2016 Projected	2017 Budget
341	17	CHILD SUPPORT FEE		\$13,104	\$75,000	\$45,776	\$60,000
		FEES AND FINES		\$13,104	\$75,000	\$45,776	\$60,000
361	10	INVESTMENT INTEREST		\$210	\$500	\$500	\$500
		MISCELLANEOUS		\$210	\$500	\$500	\$500
REVENUE TOTALS				\$13,314	\$75,500	\$46,276	\$60,500
FY2017 Budget				142		Child Support Service	
Champaign County, Illinois						Fund 617-030	

Fund 617Dept 030			2015 Actual	2016 Original	2016 Projected	2017 Budget
511	3	REG. FULL-TIME EMPLOYEES	\$10,966	\$27,738	\$28,423	\$79,736
511	9	OVERTIME	\$7	\$250	\$250	\$250
513	1	SOCIAL SECURITY-EMPLOYER	\$574	\$1,500	\$1,500	\$2,114
513	2	IMRF - EMPLOYER COST	\$647	\$4,000	\$4,000	\$318
513	4	WORKERS' COMPENSATION INS	\$0	\$200	\$200	\$152
513	5	UNEMPLOYMENT INSURANCE	\$0	\$500	\$500	\$408
513	6	EMPLOYEE HEALTH/LIFE INS	\$0	\$3,000	\$5,500	\$9,763
		PERSONNEL	\$12,194	\$37,188	\$40,373	\$92,741
522	1	STATIONERY & PRINTING	\$0	\$2,000	\$1,000	\$1,000
522	2	OFFICE SUPPLIES	\$0	\$500	\$500	\$1,000
522	44	EQUIPMENT LESS THAN \$5000	\$1,247	\$1,000	\$4,000	\$4,000
		COMMODITIES	\$1,247	\$3,500	\$5,500	\$6,000
533	29	COMPUTER/INF TCH SERVICES	\$0	\$5,000	\$3,000	\$500
533	33	TELEPHONE SERVICE	\$5	\$100	\$100	\$100
533	42	EQUIPMENT MAINTENANCE	\$0	\$500	\$500	\$15,000
533	95	CONFERENCES & TRAINING	\$0	\$250	\$250	\$250
		SERVICES	\$5	\$5,850	\$3,850	\$15,850
571	30	TO COURT AUTOMTN FUND 613	\$20,401	\$14,301	\$14,301	\$14,462
571	80	TO GENERAL CORP FUND 080	\$0	\$15,000	\$0	\$15,000
		INTERFUND EXPENDITURE	\$20,401	\$29,301	\$14,301	\$29,462
		EXPENDITURE TOTALS	\$33,847	\$75,839	\$64,024	\$144,053

FUND BALANCE

FY2015 Actual	FY2016 Projected	FY2017 Budgeted
\$291,393	\$273,645	\$190,092

FULL TIME EMPLOYEE HISTORY

FY2013	FY2014	FY2015	FY2016	FY2017
2	0	0	1	2

DESCRIPTION

Receipt and disbursement of child support payments while keeping a record of these payments for use in court. Field all inquiries relating to child support from the public and attorneys.

OBJECTIVES

With the FY2013 and FY2014 conversion of all Child Support cases to JANO, the FY2015 goals included a focus on more efficient service for other courthouse departments, as well as for the Clerk's customers. In the past, child support payments made at the counter could take up to two weeks to reach the intended recipient. Now that the data conversion is totally complete, an electronic funds transfer is possible, which reduces the distribution time to 48 hours.

PERFORMANCE INDICATORS

Indicator	FY2015 Actual	FY2016 Projected	FY2017 Budgeted
Number of Family Cases Filed in Champaign County	611	539	550