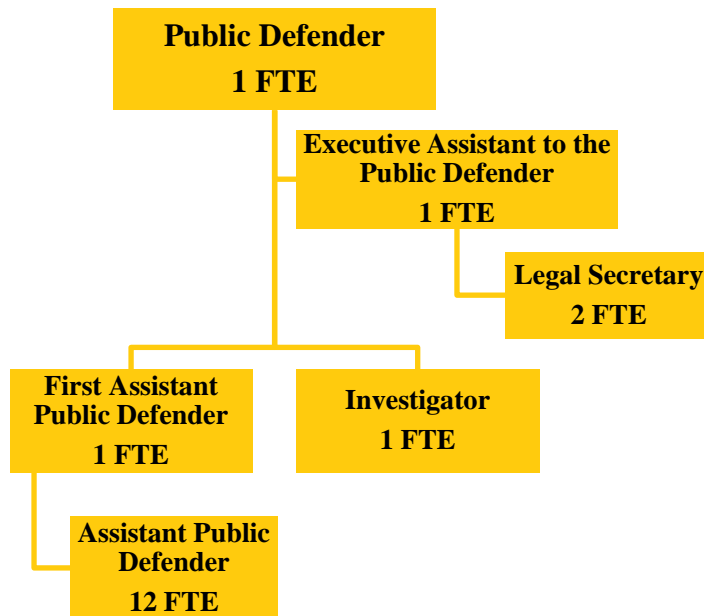


PUBLIC DEFENDER
Fund 080-036



Public Defender positions: 18 FTE

The office, position, and duties of the public defender are statutorily created and defined in the Illinois Counties Code Division 3-4 Public Defender and Appointed Counsel (55 ILCS 5/3-4).

MISSION STATEMENT

To effectively represent indigent persons in criminal, traffic, mental health, abuse/neglect, juvenile, and other miscellaneous cases in Champaign County.

BUDGET HIGHLIGHTS

Per Illinois law, two-thirds of the salary of the Public Defender is to be reimbursed by the State.

Public Defender fees are ordered by the judiciary. The Public Defender’s Office has no control over the amount ordered or collected.

A nominal increase was made to the “other services by contract” line item. This item is for phone expenses. In the past we have had to routinely make same category budget transfers to cover this expense.

An increase of a larger amount was made to “Professional Services” line item. This line item covers interpreters routinely needed and used by our office as well as expert witness expenses. As our community becomes more diverse so does the language interpreter professional expenses we require to communicate with our clients and effectively represent them in their court matters. In addition, we have effectively no budget for any type of expert witness expense. This is needed to have an expert review documents, discuss trial strategy/testimony, prepare documents and appear in court to testify.

FINANCIAL

Fund 080 Dept 036			2016 Actual	2017 Original	2017 Projected	2018 Budget
335	70	STATE SALARY REIMBURSMENT	\$99,895	\$100,000	\$100,000	\$100,000
		FEDERAL, STATE & LOCAL SHARED REVENUE	\$99,895	\$100,000	\$100,000	\$100,000
341	10	COURT FEES AND CHARGES	\$17,916	\$25,000	\$16,000	\$16,000
		FEES AND FINES	\$17,916	\$25,000	\$16,000	\$16,000
REVENUE TOTALS			\$117,811	\$125,000	\$116,000	\$116,000
511	2	APPOINTED OFFICIAL SALARY	\$219,090	\$149,858	\$149,858	\$149,858
511	3	REG. FULL-TIME EMPLOYEES PERSONNEL	\$926,574	\$958,250	\$958,250	\$966,633
			\$1,145,664	\$1,108,108	\$1,108,108	\$1,116,491
522	1	STATIONERY & PRINTING	\$118	\$500	\$500	\$500
522	2	OFFICE SUPPLIES	\$6,444	\$4,407	\$4,407	\$4,407
522	3	BOOKS,PERIODICALS & MAN.	\$174	\$525	\$525	\$525
522	6	POSTAGE, UPS, FED EXPRESS	\$31	\$0	\$0	\$0
522	15	GASOLINE & OIL	\$146	\$350	\$350	\$350
522	44	EQUIPMENT LESS THAN \$5000	\$3,302	\$820	\$820	\$820
522	93	OPERATIONAL SUPPLIES COMMODITIES	\$76	\$0	\$0	\$0
			\$10,291	\$6,602	\$6,602	\$6,602
533	5	COURT REPORTING	\$683	\$900	\$900	\$900
533	7	PROFESSIONAL SERVICES	\$1,065	\$450	\$3,000	\$3,000
533	12	JOB-REQUIRED TRAVEL EXP	\$57	\$82	\$82	\$82
533	33	TELEPHONE SERVICE	\$2,277	\$1,900	\$1,900	\$1,900
533	40	AUTOMOBILE MAINTENANCE	\$0	\$150	\$150	\$150
533	42	EQUIPMENT MAINTENANCE	\$0	\$60	\$60	\$60
533	51	EQUIPMENT RENTALS	\$120	\$100	\$120	\$120
533	68	WITNESS EXPENSE	\$418	\$418	\$418	\$418
533	93	DUES AND LICENSES	\$4,755	\$5,187	\$5,187	\$5,187
533	94	INVESTIGATION EXPENSE	\$11	\$2,500	\$2,500	\$2,500
533	95	CONFERENCES & TRAINING SERVICES	\$94	\$2,700	\$2,700	\$2,700
			\$9,480	\$14,447	\$17,017	\$17,017
EXPENDITURE TOTALS			\$1,165,435	\$1,129,157	\$1,131,727	\$1,140,110

EXPENSE PER CAPITA and FULL TIME EMPLOYEE HISTORY information is included in the General Corporate Fund Budget Summary.

ALIGNMENT to STRATEGIC PLAN

County Board Goal 1 – Champaign County is committed to being a high performing, open and transparent local government organization

- Provide flexibility in scheduling and communicating with clients to meet their needs

- Provide quality services delivered in a professional manner
- Comply with ethical and continuing legal education requirements established by the Illinois Supreme Court

County Board Goal 3 –Champaign County promotes a safe, just and healthy community

- To zealously defend the rights of indigent persons charged with crimes, and those persons for whom the Court appoints the Public Defender to represent
- Work with justice stakeholders to deal with issues of mutual concern such as technology in the courtroom and jail overcrowding.

DESCRIPTION

The Public Defender’s Office represents individuals who are indigent and cannot afford to hire counsel of their choosing. Most of the cases assigned to the office involve criminal defendants in felony, misdemeanor, traffic, and juvenile delinquency cases. The office also represents parties in abuse and neglect cases and, occasionally, in post-conviction, mental health commitment, sexually dangerous person, and child support contempt cases. The Public Defender’s Office has fourteen full-time attorneys, three full-time support staff and one full-time investigator.

OBJECTIVES

To effectively represent indigent persons during all phases of a court case from arraignment through post-conviction proceedings.

PERFORMANCE INDICATORS

Indicator	2016 Actual	2017 Projected	2018 Projected
FELONY CASES (criminal & felony traffic – filed as CF)			
Filed with the Circuit Clerk	1,733	1,752	1,752
Opened by the Public Defender	1,741	1,934	1,934
Closed by the Public Defender	1,599	1,556	1,556
MISDEMEANOR CASES (criminal only – filed as CM)			
Filed with the Circuit Clerk	1,198	1,134	1,134
Opened by the Public Defender	1,048	1,034	1,034
Closed by the Public Defender	1,060	964	964
TRAFFIC CASES (misdemeanor/DUI – filed as TR and DT) **			
Filed with the Circuit clerk – TR (non-petty)	3,472	2,078	2,078
Filed with the Circuit clerk – DUIs – DT	501	478	478
Opened by the Public Defender (non petty TR and DT)	2,421	2,552	2,552
Closed by the Public Defender	2,108	2,428	2,428
JUVENILE DELINQUENCY CASES (filed as JD)			
Filed with the Circuit Clerk	249	190	190
Opened by the Public Defender	237	198	198

Indicator	2016 Actual	2017 Projected	2018 Projected
Closed by the Public Defender	241	226	226
JUVENILE ABUSE/NEGLECT CASES (filed as JA)			
Filed with the Circuit Clerk	65	72	72
Opened by the Public Defender	107	90	90
Closed by the Public Defender	77	84	84

NOTES

- 1) Projected numbers for the Circuit Clerk are based on court filings from January to June 2017 (six months). Projected numbers for the Public Defender are based on reports filed with the County Board for January to June 2017 (six months).
- 2) Public Defender numbers may exceed actual number of cases filed with the Circuit Clerk because the PDO “reopens” previously closed files when the State files a petition to revoke a sentence, etc.
- 3) In abuse/neglect, two attorneys are appointed in the same case so numbers reflect multiple office “openings” in the same case, which is why there is a discrepancy in the number of cases filed by the Circuit Clerk vs. the number of cases opened by the Public Defender’s Office.

** Only TR DUI cases are reflected here since DUIs can be filed as DT or CF and are handled by multiple attorneys. The felony DUI’s are reflected in the felony statistics.