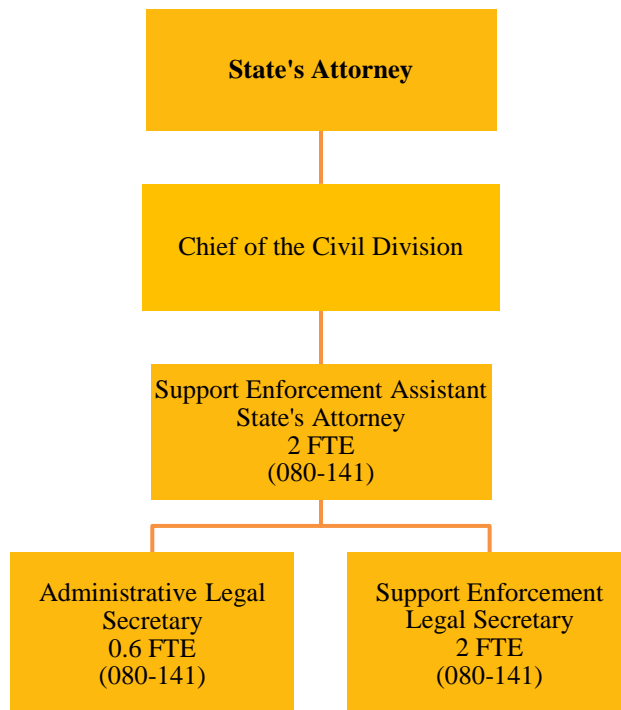


STATE'S ATTORNEY SUPPORT ENFORCEMENT

Fund 080-141



State's Attorney Support Enforcement (080-141) positions: 4.6 FTE

MISSION STATEMENT

To provide services to custodial parents and guardians and the Department of Children and Family Services (DCFS) through a partnership with the Illinois Department of Healthcare and Family Services (IDHFS) in the establishment of paternity, establishment of child support orders, modification of child support, enrollment and enforcement of Uniform Interstate Family Support Act (UIFSA) and administrative support orders, and enforcement of existing child support orders.

BUDGET HIGHLIGHTS

Cuts in state funding have required this division to make similar cuts as required by other county departments. The division continues to work as required to fulfill the obligations under the contract with IDHFS. The projected FY18 budget reflects revenue received from IDHFS in 2018 for work performed in 2017.

FINANCIAL

Fund 080 Dept 141			2016 Actual	2017 Original	2017 Projected	2018 Budget
331	25	HHS-CHLD SUP ENF TTL IV-D	\$205,202	\$189,178	\$189,178	\$199,078
334	41	IL DPT HLTHCARE & FAM SRV	\$105,712	\$97,456	\$97,456	\$102,556
		FEDERAL, STATE & LOCAL SHARED REVENUE	\$310,914	\$286,634	\$286,634	\$301,634
REVENUE TOTALS			\$310,914	\$286,634	\$286,634	\$301,634
511	3	REG. FULL-TIME EMPLOYEES	\$180,159	\$190,516	\$190,516	\$195,320
511	4	REG. PART-TIME EMPLOYEES	\$150	\$18,954	\$18,954	\$19,508
511	5	TEMP. SALARIES & WAGES	\$5,906	\$0	\$0	\$0
513	1	SOCIAL SECURITY-EMPLOYER	\$0	\$0	\$0	\$16,434
513	2	IMRF - EMPLOYER COST	\$0	\$0	\$0	\$17,702
513	4	WORKERS' COMPENSATION INS	\$0	\$0	\$0	\$1,031
513	5	UNEMPLOYMENT INSURANCE	\$0	\$0	\$0	\$1,240
513	6	EMPLOYEE HEALTH/LIFE INS	\$0	\$13,300	\$0	\$36,750
		PERSONNEL	\$186,215	\$222,770	\$209,470	\$287,985
522	2	OFFICE SUPPLIES	\$2,926	\$7,500	\$7,500	\$7,500
522	3	BOOKS, PERIODICALS & MAN.	\$1,060	\$6,000	\$6,000	\$2,500
522	6	POSTAGE, UPS, FED EXPRESS	\$54	\$7,500	\$7,500	\$0
522	44	EQUIPMENT LESS THAN \$5000	\$0	\$7,500	\$7,500	\$0
		COMMODITIES	\$4,040	\$28,500	\$28,500	\$10,000
533	1	AUDIT & ACCOUNTING SERVCS	\$0	\$7,500	\$0	\$0
533	5	COURT REPORTING	\$0	\$3,000	\$0	\$0
533	7	PROFESSIONAL SERVICES	\$6,151	\$0	\$12,700	\$0
533	29	COMPUTER/INF TCH SERVICES	\$0	\$7,500	\$3,500	\$0
533	33	TELEPHONE SERVICE	\$670	\$2,500	\$2,500	\$0
533	42	EQUIPMENT MAINTENANCE	\$0	\$4,000	\$0	\$0
533	70	LEGAL NOTICES,ADVERTISING	\$0	\$1,000	\$1,000	\$0
533	85	PHOTOCOPY SERVICES	\$0	\$5,000	\$5,000	\$0
533	93	DUES AND LICENSES	\$796	\$1,500	\$1,500	\$1,000
533	95	CONFERENCES & TRAINING	\$810	\$3,000	\$3,000	\$1,500
		SERVICES	\$8,427	\$35,000	\$29,200	\$2,500
544	33	OFFICE EQUIPMENT & FURNIS	\$0	\$7,500	\$7,500	\$0
		CAPITAL	\$0	\$7,500	\$7,500	\$0
EXPENDITURE TOTALS			\$198,682	\$293,770	\$274,670	\$300,485

EXPENSE PER CAPITA and FULL TIME EMPLOYEE HISTORY information is included in the General Corporate Fund Budget Summary.

DESCRIPTION

The Support Enforcement Division, through a contract with the IDHFS, represents the State of Illinois in child support enforcement cases on behalf of indigent custodial parents in Champaign County. Court cases can continue from the birth of the child through the child's 18th birthday. Court responsibilities include establishment of paternity, determination of initial child support, modification or abatement of child support, and the collection of delinquent child support through employment search orders and petitions for findings of contempt. Court responsibilities also include establishment and enforcement of dependent medical insurance orders.

OBJECTIVES

The Support Enforcement Division has a contract with the IDHFS through which the division represents the IDHFS in the establishment of paternity; establishment of child support orders; modification of child support; enrollment and enforcement of UIFSA and administrative support orders; and enforcement of existing child support orders. The contract sets forth timetables, guidelines, and requirements as to how these services are to be performed.

PERFORMANCE INDICATORS

Indicator	FY2016 Actual	FY2017 Projected	FY2018 Budgeted
New cases filed	497	450	550