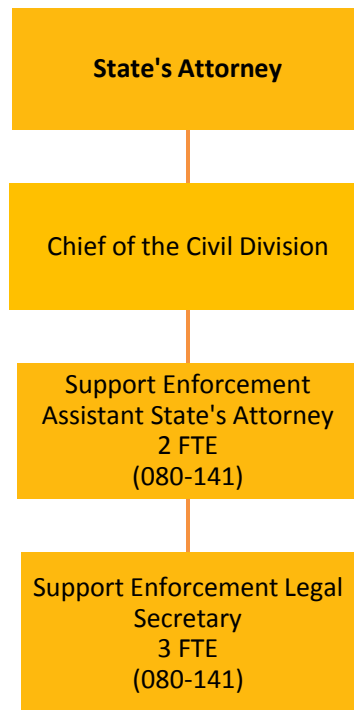


STATE'S ATTORNEY SUPPORT ENFORCEMENT

Fund 080-141



State's Attorney Support Enforcement (080-141) positions: 5 FTE

MISSION STATEMENT

To provide services to custodial parents and guardians and the Department of Children and Family Services (DCFS) through a partnership with the Illinois Department of Healthcare and Family Services (IDHFS) in the establishment of paternity, establishment of child support orders, modification of child support, enrollment and enforcement of Uniform Interstate Family Support Act (UIFSA) and administrative support orders, and enforcement of existing child support orders.

BUDGET HIGHLIGHTS

Over the last few years, State funding for this division has remained flat. The division continues to work as required to fulfill the obligations under the contract with IDHFS. The projected FY19 budget reflects revenue received from IDHFS in 2019 for work performed in 2018.

FINANCIAL

Fund 080 Dept 141			2017 Actual	2018 Original	2018 Projected	2019 Budget
331	25	HHS-CHLD SUP ENF TTL IV-D	\$193,953	\$199,078	\$189,178	\$189,178
334	41	IL DPT HLTHCARE & FAM SRV	\$99,915	\$102,556	\$97,456	\$97,456
		FEDERAL, STATE & LOCAL SHARED REVENUE	\$293,868	\$301,634	\$286,634	\$286,634
REVENUE TOTALS			\$293,868	\$301,634	\$286,634	\$286,634
511	3	REG. FULL-TIME EMPLOYEES	\$192,785	\$195,320	\$195,000	\$218,986

511	4	REG. PART-TIME EMPLOYEES	\$0	\$19,508	\$0	\$0
511	5	TEMP. SALARIES & WAGES	\$0	\$0	\$9,617	\$0
513	1	SOCIAL SECURITY-EMPLOYER	\$0	\$16,434	\$16,434	\$16,752
513	2	IMRF - EMPLOYER COST	\$0	\$17,702	\$17,702	\$12,964
513	4	WORKERS' COMPENSATION INS	\$0	\$1,031	\$800	\$900
513	5	UNEMPLOYMENT INSURANCE	\$0	\$1,240	\$1,240	\$1,240
513	6	EMPLOYEE HEALTH/LIFE INS	\$0	\$36,750	\$36,750	\$47,500
		PERSONNEL	\$192,785	\$287,985	\$277,543	\$298,342
522	2	OFFICE SUPPLIES	\$3,086	\$7,500	\$4,500	\$7,500
522	3	BOOKS, PERIODICALS & MAN.	\$1,222	\$2,500	\$2,000	\$2,500
522	6	POSTAGE, UPS, FED EXPRESS	\$170	\$0	\$198	\$0
522	44	EQUIPMENT LESS THAN \$5000	\$0	\$0	\$2,700	\$0
		COMMODITIES	\$4,478	\$10,000	\$9,398	\$10,000
533	7	PROFESSIONAL SERVICES	\$20,320	\$0	\$0	\$0
533	33	TELEPHONE SERVICE	\$631	\$0	\$227	\$0
533	50	FACILITY/OFFICE RENTALS	\$0	\$0	\$0	\$25,000
533	70	LEGAL NOTICES,ADVERTISING	\$293	\$0	\$0	\$0
533	93	DUES AND LICENSES	\$770	\$1,000	\$1,000	\$1,000
533	95	CONFERENCES & TRAINING	\$2,129	\$1,500	\$1,500	\$1,500
		SERVICES	\$24,143	\$2,500	\$2,727	\$27,500
EXPENDITURE TOTALS			\$221,406	\$300,485	\$289,668	\$335,842

EXPENSE PER CAPITA and FULL TIME EMPLOYEE HISTORY information is included in the General Corporate Fund Budget Summary.

DESCRIPTION

The Support Enforcement Division, through a contract with the IDHFS, represents the State of Illinois in child support enforcement cases on behalf of indigent custodial parents in Champaign County. Court cases can continue from the birth of the child through the child's 18th birthday. Court responsibilities include establishment of paternity, determination of initial child support, modification or abatement of child support, and the collection of delinquent child support through employment search orders and petitions for findings of contempt. Court responsibilities also include establishment and enforcement of dependent medical insurance orders.

OBJECTIVES

The Support Enforcement Division has a contract with the IDHFS through which the division represents the IDHFS in the establishment of paternity; establishment of child support orders; modification of child support; enrollment and enforcement of UIFSA and administrative support orders; and enforcement of existing child support orders. The contract sets forth timetables, guidelines, and requirements as to how these services are to be performed.

PERFORMANCE INDICATORS

Indicator	FY2017 Actual	FY2018 Projected	FY2019 Budgeted
New cases filed	509	400	525