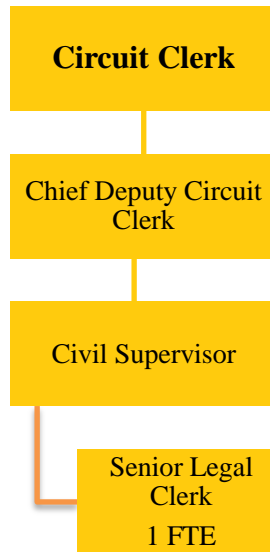


CHILD SUPPORT SERVICE
Fund 617-030



Circuit Clerk child support service fund position: 1 FTE

This Fund is established by an annual fee of \$36 assessed to the payers of child support. It is authorized by 705 ILCS 105/27.1a (bb)(4), and required by County Board Ordinance No. 2580. Expenditures from this fund are for maintaining child support records and processing support orders to the State of Illinois KIDS system and recording payments issued by the State Disbursement Unit for the official record of the Court.

BUDGET HIGHLIGHTS

The collection of this fee was suspended for two full calendar years. After reviewing the statute and County Board Ordinance, the decision was reached that the Clerk did not have the authority to suspend the collection of this fee, and the collection of the fee has resumed. Additionally, the Family (F) case volume has more than doubled since 2008, along with the associated responsibilities.

FINANCIAL

Fund 617 Dept 030			2017	2018	2018	2019
			Actual	Original	Projected	Budget
341	17	CHILD SUPPORT FEE FEES AND FINES	\$1,332 \$1,332	\$20,000 \$20,000	\$5,000 \$5,000	\$15,000 \$15,000
361	10	INVESTMENT INTEREST MISCELLANEOUS	\$1,512 \$1,512	\$600 \$600	\$1,500 \$1,500	\$1,500 \$1,500
REVENUE TOTALS			\$2,844	\$20,600	\$6,500	\$16,500
511	3	REG. FULL-TIME EMPLOYEES	\$76,177	\$30,929	\$30,929	\$30,929
511	9	OVERTIME	\$285	\$250	\$250	\$250
513	1	SOCIAL SECURITY-EMPLOYER	\$1,932	\$2,366	\$2,366	\$2,366
513	2	IMRF - EMPLOYER COST	\$2,132	\$2,549	\$2,549	\$1,831
513	4	WORKERS' COMPENSATION INS	\$140	\$170	\$170	\$201
513	5	UNEMPLOYMENT INSURANCE	\$191	\$248	\$248	\$248

513	6	EMPLOYEE HEALTH/LIFE INS PERSONNEL	\$3,497 \$84,354	\$10,549 \$47,061	\$10,549 \$47,061	\$10,082 \$45,907
522	1	STATIONERY & PRINTING	\$0	\$1,000	\$1,000	\$1,000
522	2	OFFICE SUPPLIES	\$0	\$1,000	\$0	\$0
522	44	EQUIPMENT LESS THAN \$5000 COMMODITIES	\$9,617 \$9,617	\$2,000 \$4,000	\$0 \$1,000	\$0 \$1,000
533	29	COMPUTER/INF TCH SERVICES	\$0	\$500	\$0	\$0
533	33	TELEPHONE SERVICE	\$0	\$100	\$0	\$0
533	42	EQUIPMENT MAINTENANCE	\$438	\$15,000	\$15,000	\$0
533	52	OTHER SERVICE BY CONTRACT	\$2,000	\$2,000	\$2,000	\$2,000
533	75	COURT-ORDERED COSTS	\$400	\$0	\$0	\$0
533	95	CONFERENCES & TRAINING SERVICES	\$0 \$2,838	\$250 \$17,850	\$250 \$17,250	\$250 \$2,250
571	30	TO COURT AUTOMTN FUND 613	\$14,462	\$14,462	\$0	\$0
571	80	TO GENERAL CORP FUND 080 INTERFUND EXPENDITURE	\$0 \$14,462	\$15,000 \$29,462	\$0 \$0	\$0 \$0
EXPENDITURE TOTALS			\$111,271	\$98,373	\$65,311	\$49,157

FUND BALANCE

FY2017 Actual	FY2018 Projected	FY2019 Budgeted
\$156,967	\$98,158	\$65,501

FULL TIME EMPLOYEE HISTORY

FY2015	FY2016	FY2017	FY2018	FY2019
0	1	2	1	1

DESCRIPTION

Receipt and disbursement of child support payments while keeping a record of these payments for use in court. Field all inquiries relating to child support from the public and attorneys.

OBJECTIVES

In FY2013 and FY2014 all Child Support cases were converted to JANO. Future fiscal year will focus on more efficient service for other courthouse departments, as well as for the Clerk's customers. In the past, child support payments made at the counter could take up to two weeks to reach the intended recipient. Now that the data conversion is totally complete, an electronic funds transfer is possible, which reduces the distribution time to 48 hours.

PERFORMANCE INDICATORS

Indicator	FY2017 Actual	FY2018 Projected	FY2019 Budgeted
Number of Family Cases Filed in Champaign County	509	350	450