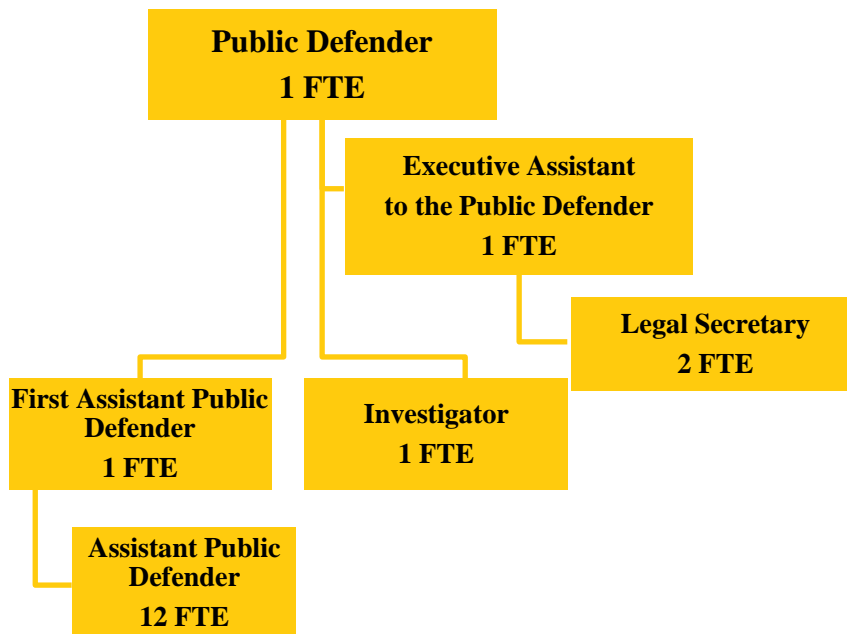


PUBLIC DEFENDER
Fund 080-036



Public Defender positions: 18 FTE

The office, position, and duties of the public defender are statutorily created and defined in the Illinois Counties Code Division 3-4 Public Defender and Appointed Counsel (55 ILCS 5/3-4).

MISSION STATEMENT

To effectively represent indigent persons in criminal, traffic, abuse/neglect, juvenile, and other miscellaneous cases in Champaign County.

BUDGET HIGHLIGHTS

Per Illinois law, two-thirds of the salary of the Public Defender is to be reimbursed by the State.

Court Appointed Counsel Fees are ordered by the judiciary. The Judiciary started imposing these fees during Fiscal Year 2018. As a result of the fees imposed the revenue generated for the County’s General Fund has increased from \$19,585.79 at the end of Fiscal Year 2018 to \$27,266.63 as of June 30, 2019.

FINANCIAL

Fund 080 Dept 036			2018 Actual	2019 Original	2019 Projected	2020 Budget
335	70	STATE SALARY REIMBURSMENT	\$100,994	\$102,108	\$102,108	\$104,248
		FEDERAL, STATE & LOCAL SHARED REVENUE	\$100,994	\$102,108	\$102,108	\$104,248

Fund 080 Dept 036			2018	2019	2019	2020
			Actual	Original	Projected	Budget
341	10	COURT FEES AND CHARGES	\$19,586	\$15,000	\$30,000	\$53,000
		FEES AND FINES	\$19,586	\$15,000	\$30,000	\$53,000
364	10	SALE OF FIXED ASSETS	\$1,692	\$0	\$0	\$0
369	90	OTHER MISC. REVENUE	\$500	\$0	\$0	\$0
		MISCELLANEOUS	\$2,192	\$0	\$0	\$0
REVENUE TOTALS			\$122,772	\$117,108	\$132,108	\$157,248
511	2	APPOINTED OFFICIAL SALARY	\$151,507	\$153,155	\$153,155	\$156,371
511	3	REG. FULL-TIME EMPLOYEES	\$937,605	\$947,097	\$947,097	\$1,035,457
		PERSONNEL	\$1,089,112	\$1,100,252	\$1,100,252	\$1,191,828
522	1	STATIONERY & PRINTING	\$312	\$500	\$500	\$500
522	2	OFFICE SUPPLIES	\$7,801	\$4,407	\$4,407	\$4,407
522	3	BOOKS,PERIODICALS & MAN.	\$479	\$525	\$525	\$525
522	15	GASOLINE & OIL	\$174	\$350	\$350	\$350
522	44	EQUIPMENT LESS THAN \$5000	\$1,574	\$820	\$820	\$820
		COMMODITIES	\$10,340	\$6,602	\$6,602	\$6,602
533	5	COURT REPORTING	\$1,282	\$900	\$900	\$900
533	7	PROFESSIONAL SERVICES	\$4,300	\$4,000	\$4,000	\$4,000
533	12	JOB-REQUIRED TRAVEL EXP	\$0	\$82	\$82	\$82
533	33	TELEPHONE SERVICE	\$1,648	\$1,900	\$1,900	\$1,900
533	40	AUTOMOBILE MAINTENANCE	\$230	\$330	\$330	\$330
533	42	EQUIPMENT MAINTENANCE	\$0	\$60	\$60	\$60
533	51	EQUIPMENT RENTALS	\$120	\$120	\$120	\$120
533	68	WITNESS EXPENSE	\$0	\$418	\$418	\$418
533	93	DUES AND LICENSES	\$4,213	\$5,187	\$5,187	\$5,187
533	94	INVESTIGATION EXPENSE	\$93	\$2,500	\$2,500	\$2,500
533	95	CONFERENCES & TRAINING	\$1,216	\$2,700	\$2,700	\$2,700
		SERVICES	\$13,102	\$18,197	\$18,197	\$18,197
EXPENDITURE TOTALS			\$1,112,554	\$1,125,051	\$1,125,051	\$1,216,627

ALIGNMENT to STRATEGIC PLAN

County Board Goal 1 – Champaign County is committed to being a high performing, open and transparent local government organization

- Provide flexibility in scheduling and communicating with clients to meet their needs
- Provide quality services delivered in a professional manner
- Comply with ethical and continuing legal education requirements established by the Illinois Supreme Court

County Board Goal 3 –Champaign County promotes a safe, just and healthy community

- To zealously defend the rights of indigent persons charged with crimes, and those persons for whom the Court appoints the Public Defender to represent
- Work with justice stakeholders to deal with issues of mutual concern such as technology in the courtroom and jail overcrowding.

DESCRIPTION

The Public Defender’s Office represents individuals who are indigent and cannot afford to hire counsel of their choosing. Cases assigned to the office involve criminal defendants in felony, misdemeanor, traffic, and juvenile delinquency cases. The office also represents parties in abuse and neglect cases, post-conviction matters, sexually dangerous person cases, and occasionally, in child support contempt cases. The Public Defender’s Office has fourteen full-time attorneys, three full-time support staff and one full-time investigator.

OBJECTIVES

To effectively represent indigent persons during all phases of a court case from arraignment through post-conviction proceedings.

PERFORMANCE INDICATORS

Indicator	2018 Actual	2019 Projected	2020 Budgeted
FELONY CASES (criminal & felony traffic – filed as CF)			
Filed with the Circuit Clerk	1777	1912	1912
Opened by the Public Defender	1761	1774	1774
Closed by the Public Defender	1661	1660	1660
MISDEMEANOR CASES (criminal only – filed as CM)			
Filed with the Circuit Clerk	1220	1142	1142
Opened by the Public Defender	1127	1134	1134
Closed by the Public Defender	1047	1100	1100
TRAFFIC CASES (criminal only – filed as TR and DT) *			
Filed with the Circuit clerk	2830	3074	3074
Opened by the Public Defender (non petty TR and DT)	2820	3000	3000
Closed by the Public Defender	2706	2860	2860
JUVENILE DELINQUENCY CASES (filed as JD and J)			
Filed with the Circuit Clerk	185	172	172
Opened by the Public Defender	200	162	162
Closed by the Public Defender	225	190	190
JUVENILE ABUSE/NEGLECT CASES (filed as JA)			
Filed with the Circuit Clerk	96	90	90
Opened by the Public Defender	132	120	120
Closed by the Public Defender	91	90	90
PROBATION VIOLATIONS (filed as PTR in CF,CM,TR) **			
Opened by the Public Defender	172	200	200
Closed by the Public Defender	192	180	180
POST CONVICTION CASES (filed in CF cases) **			

Indicator	2018 Actual	2019 Projected	2020 Budgeted
Opened by the Public Defender	5	10	10
Closed by the Public Defender	8	8	8
MENTAL HEALTH (filed as MH)			
Opened by the Public Defender	17	No longer	assigned
Closed by the Public Defender	17		
CONTEMPT CASES (filed as CC) **			
Opened by the Public Defender	52	36	36
Closed by the Public Defender	51	36	36

NOTES

- 1) Projected numbers for the Circuit Clerk are based on court filings from January to June 2019 (six months). Projected numbers for the Public Defender are based on reports filed with the County Board for January to June 2019 (six months).
- 2) Public Defender numbers may exceed actual number of cases filed with the Circuit Clerk because the PDO “re-opens” previously closed files when the State files a petition to revoke a sentence, etc. (we are starting to track cases differently so this should be reduced in the future)
- 3) In abuse/neglect, two attorneys are appointed in the same case so numbers reflect multiple office “openings” in the same case, which is why there is a discrepancy in the number of cases filed by the Circuit Clerk vs. the number of cases opened by the Public Defender’s Office.
- 4) Mental Health cases are no longer assigned to our office. A full-time attorney was hired by the Guardianship and Advocacy Commission to handle these matters starting at the end of Fiscal Year 2018.

* Only misdemeanor DUI cases are reflected here since DUIs can be filed as DT or CF and are handled by multiple attorneys. Felony traffic and DUI’s are reflected in the felony statistics.

**Statistics are not completely accurate for FY 2018 as we just started tracking them separately. These cases were previously ‘re-opened’ in TR, DT, CM or CF which would skew the PD open and closed cases for each category. Having this as a separate category will better reflect opened/closed cases in all categories. This tracking started near the end of May 2018.