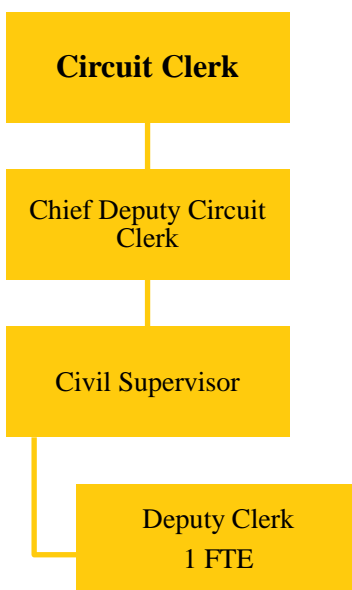


CIRCUIT CLERK SUPPORT ENFORCEMENT

Fund 080-130



Circuit Clerk Support Enforcement position: 1 FTE

Department created through an Intergovernmental Agreement with the Department of Healthcare and Family Services enabling the Circuit Clerk's office to provide and collect information regarding child support.

MISSION STATEMENT

The mission of the Office of the Clerk of the Circuit Court is to serve the citizens of Champaign County in a timely, efficient, and ethical manner. All services, information, and court records will be provided with courtesy and cost efficiency.

BUDGET HIGHLIGHTS

This Agreement reimburses the County for efforts in providing child support information to the State. 66% of our reimbursement comes from the federal government with the balance from the state, and the funding is used to reimburse the County for personnel costs. The State of Illinois reduced their reimbursement calculations for this program in FY2017 and again in FY2018, and the Agreement now assumes no change for FY2019 and FY2020. The total dollar amount of support payments processed continues to decrease, as more cases are ordered to be processed by the State Disbursement Unit (SDU). However, our obligation to record the payments (whether they are made through the SDU or through our office) has not changed, and our workload on IV-D cases continues to increase.

FINANCIAL

Fund 080 Dept 130				2018 Actual	2019 Original	2019 Projected	2020 Budget
331	25	HHS-CHLD SUP ENF TTL IV-D		\$12,266	\$18,245	\$15,717	\$15,717

FY2020 Budget
Champaign County, Illinois

177

Circuit Clerk Support Enforcement
General Fund 080-130

Fund 080 Dept 130			2018	2019	2019	2020
			Actual	Original	Projected	Budget
334	41	IL DPT HLTHCARE & FAM SRV	\$6,319	\$12,163	\$8,097	\$8,097
		FEDERAL, STATE & LOCAL SHARED REVENUE	\$18,585	\$30,408	\$23,814	\$23,814
REVENUE TOTALS			\$18,585	\$30,408	\$23,814	\$23,814
511	3	REG. FULL-TIME EMPLOYEES	\$36,274	\$36,175	\$0	\$39,910
511	9	OVERTIME	\$206	\$150	\$0	\$150
513	1	SOCIAL SECURITY-EMPLOYER	\$2,681	\$0	\$0	\$0
513	2	IMRF - EMPLOYER COST	\$2,853	\$0	\$0	\$0
513	4	WORKERS' COMPENSATION INS	\$195	\$0	\$0	\$0
513	5	UNEMPLOYMENT INSURANCE	\$245	\$0	\$0	\$0
513	6	EMPLOYEE HEALTH/LIFE INS	\$8,669	\$0	\$0	\$0
		PERSONNEL	\$51,123	\$36,325	\$0	\$40,060
EXPENDITURE TOTALS			\$51,123	\$36,325	\$0	\$40,060

DESCRIPTION

The Intergovernmental Agreement requires the Circuit Clerk to provide to the State Disbursement Unit (SDU) all demographic information regarding the payers and recipients of child support when that support is required by an order of the Champaign County Circuit Court. Specific information regarding the court order and payment history is also required.

OBJECTIVES

- Provide necessary information to SDU on a timely basis
- All support payments processed on time

PERFORMANCE INDICATORS

Indicator	FY2018 Actual	FY2019 Projected	FY2020 Budgeted
Total dollars of support payments processed	\$670,367	\$660,000	\$650,000