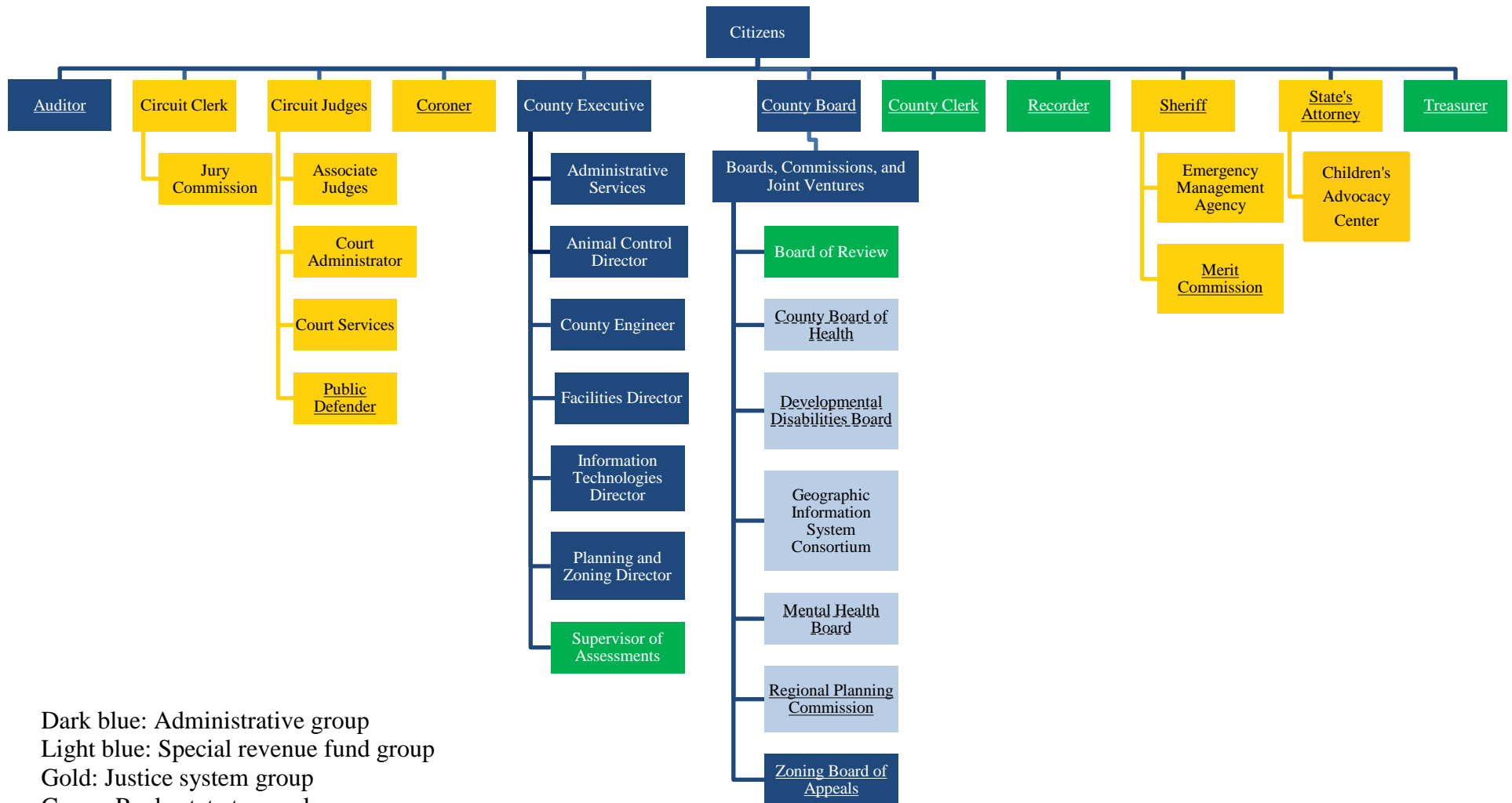


CHAMPAIGN COUNTY ORGANIZATION CHART



Dark blue: Administrative group

Light blue: Special revenue fund group

Gold: Justice system group

Green: Real estate tax cycle group

Solid underline: Offices, officers, and/or employees created by the Illinois Counties Code (55 ILCS 5/)

Dashed underline: Boards created by referenda