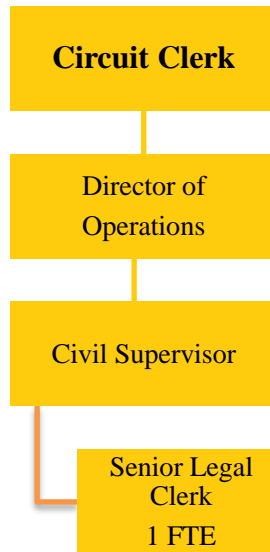


CHILD SUPPORT SERVICE
Fund 617-030



Circuit Clerk child support service fund position: 1 FTE

This Fund is established by an annual fee of \$36 assessed to the payers of child support. It is authorized by 705 ILCS 105/27.1a (bb)(4), and required by County Board Ordinance No. 2580. Expenditures from this fund are for maintaining child support records and processing support orders to the State of Illinois KIDS system and recording payments issued by the State Disbursement Unit for the official record of the Court.

BUDGET HIGHLIGHTS

The revenue from the fee is estimated at \$2,000 in FY2020 and \$16,500 in FY2021 which is the average for the last three years of full collection – FY2014-FY2016.

The primary expenditure is for the salary and benefits of one Senior Legal Clerk responsible for maintaining child support records and processing support orders to the State. Because the personnel costs are more than double the annual revenue for the fund, no other expenditures are included in this budget. At the current ratio of revenue to expenditure, the fund balance will be depleted in FY2021 and no longer able to sustain the current full-time position.

FINANCIAL

Fund 617 Dept 030			2019	2020	2020	2021
			Actual	Original	Projected	Budget
341	17	CHILD SUPPORT FEE FEES AND FINES	\$6,196	\$16,500	\$2,000	\$16,500
			\$6,196	\$16,500	\$2,000	\$16,500
361	10	INVESTMENT INTEREST	\$1,648	\$2,200	\$200	\$0
		MISCELLANEOUS	\$1,648	\$2,200	\$200	\$0
REVENUE TOTALS			\$7,844	\$18,700	\$2,200	\$16,500

511	3	REG. FULL-TIME EMPLOYEES	\$32,285	\$34,113	\$34,113	\$35,098
511	9	OVERTIME	\$192	\$250	\$250	\$250
513	1	SOCIAL SECURITY-EMPLOYER	\$2,484	\$2,629	\$2,629	\$0
513	2	IMRF - EMPLOYER COST	\$1,944	\$2,512	\$2,512	\$0
513	4	WORKERS' COMPENSATION INS	\$210	\$208	\$208	\$0
513	5	UNEMPLOYMENT INSURANCE	\$233	\$233	\$233	\$0
513	6	EMPLOYEE HEALTH/LIFE INS	\$38	\$10,243	\$51	\$0
		PERSONNEL	\$37,386	\$50,188	\$39,996	\$35,348
522	1	STATIONERY & PRINTING	\$220	\$0	\$0	\$0
		COMMODITIES	\$220	\$0	\$0	\$0
533	95	CONFERENCES & TRAINING	\$0	\$250	\$0	\$0
		SERVICES	\$0	\$250	\$0	\$0
		EXPENDITURE TOTALS	\$37,606	\$50,438	\$39,996	\$35,348

FUND BALANCE

FY2019 Actual	FY2020 Projected	FY2021 Budgeted
\$78,338	\$40,542	\$21,694

This fund will ultimately be unable to support the full-time position. In FY2021, the fringes for the FTE were moved to other County funds.

FULL TIME EMPLOYEE HISTORY

FY2017	FY2018	FY2019	FY2020	FY2021
1	2	1	1	1

DESCRIPTION

Receipt and disbursement of child support payments while keeping a record of these payments for use in court. Field all inquiries relating to child support from the public and attorneys.

OBJECTIVES

By the end of FY2014, the JANO software system was fully implemented for the processing of Child Support cases and payments. Prior to the conversion, processing child support payments made at the counter in the Circuit Clerk's Office could take up to two weeks to reach the intended recipient. With the implementation of the JANO software system, electronic funds transfers are now available for payment which can be accomplished within 48 hours of receipt.

PERFORMANCE INDICATORS

Indicator	FY2019 Actual	FY2020 Projected	FY2021 Budgeted
Number of Family Cases Filed in Champaign County	429	325	500