

County Board

August 22, 2013
Handouts

Item XI-A Quarterly Nursing Home Report

Item XI-B Local Foods Policy Council Presentation

Champaign County Local Foods Policy Council

08/22/2013

Local Foods Policy Council Charter

- Enhance economic development and strengthen local foods systems.
- Bring stakeholders together and provide mechanisms for seeking stakeholder expertise.
- Explore means for small business loans.
- Coordinate and collaborate with existing programs.
- Bring to the attention of the County Board new programs.
- Identify and recommend to the County Board initiatives to support goals of LFPC.
- Establish a website on the Champaign County website.

Progress Report

- Guest Speakers
 - Urbana Farmer's Market
 - Illinois Green Business Association
 - Zero Percent
 - Champaign County Health Department
 - Lierman Neighborhood Community Garden
 - Growing a New Generation of Illinois Fruit and Vegetable Farmers
 - DCEO Todd Rusk
 - Land Connection/Edible Economy

Progress Report Contd.

- Proposed a change to LESA to address protection of land suitable for local food production
- Proposed 13th RRO factor for protection of local foods
- Website: ChampaignCountyLocalFood.Org
- Guest Commentary
- Site visit to Tiny Greens

Progress Report Contd.

- Local Projects
 - Partnership between U of I Dining Services and Student Farm & Zero Percent
 - Rantoul Project

Next Steps

- Strategic Planning Process
 - Short Term Actions
 - Convene an advisory group
 - Launch LFPC website
 - Work with the Chambers of Commerce, Champaign County Visitors Bureau and EDC to market local foods
 - Work with the Illinois Green Business Association to create a certification for restaurants using local foods

Next Steps

- Strategic Planning Process
- Long Term Actions
 - Compiling a comprehensive list of:
 - Restaurants featuring local foods
 - Local food producers
 - Encourage local institutions to adopt a policy to increase their percentage of locally sourced foods
 - Needs assessment survey of producers

Questions?



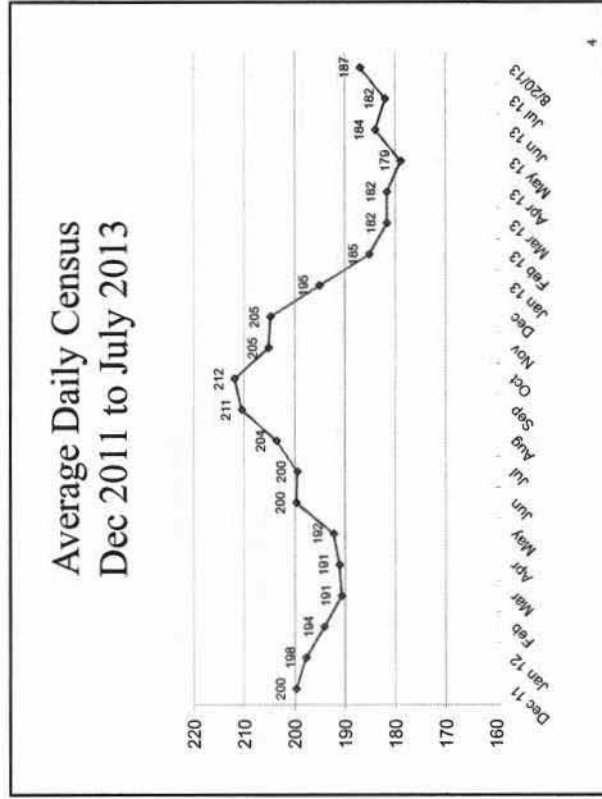
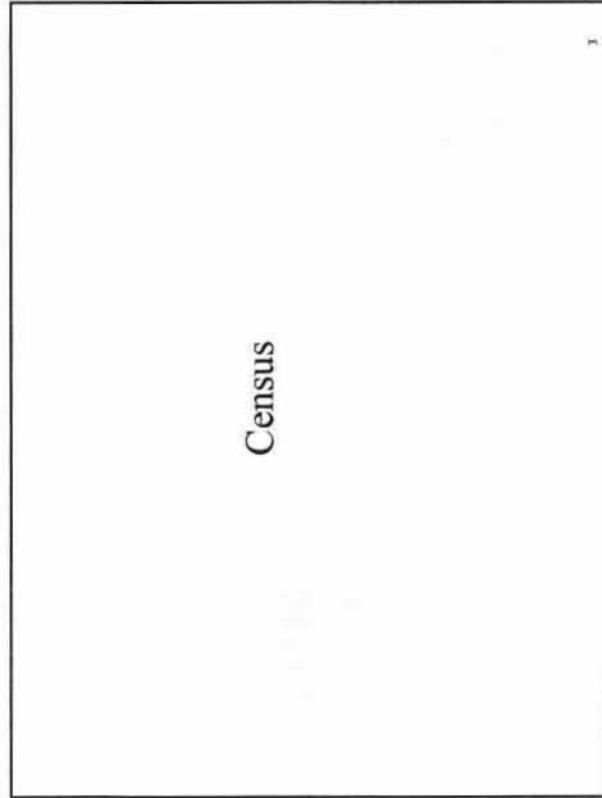
Champaign County Nursing Home
Quarterly Update
3rd Quarter 2013

August 22, 2013

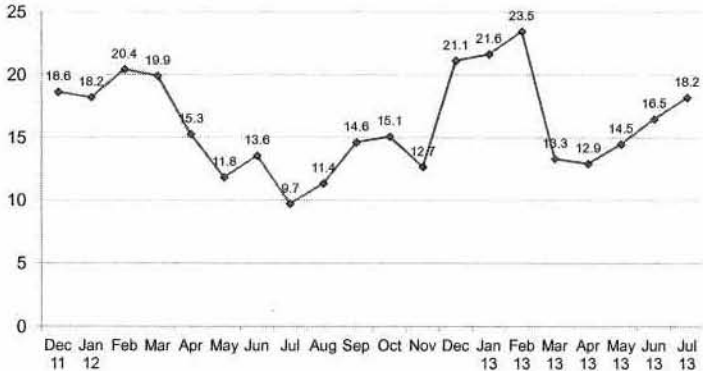
Scott T. Gima, RN, MHA
Vice President
Management Performance Associates
Saint Louis, Missouri

Topics

- Census
- Financial Position
- Cash Position
- Strategic Initiatives

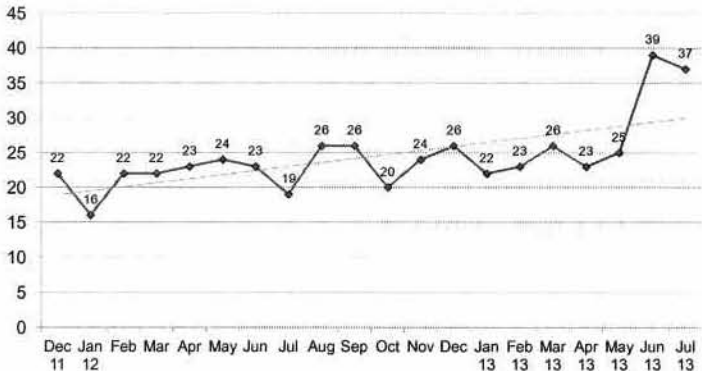


Medicare Average Daily Census Dec 2011 to July 2013



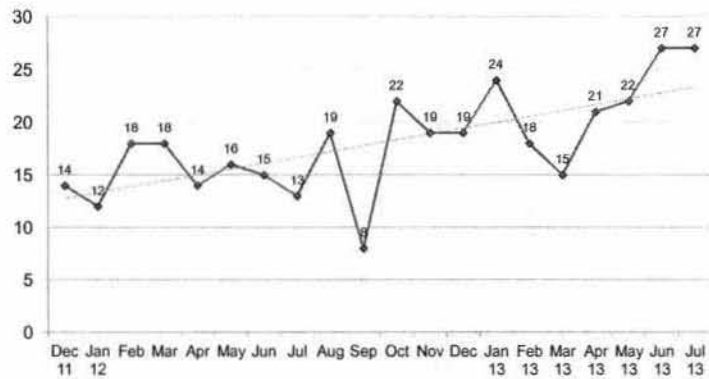
5

Admissions Dec 2011 to July 2013



6

Discharges Dec 2011 to May 2013

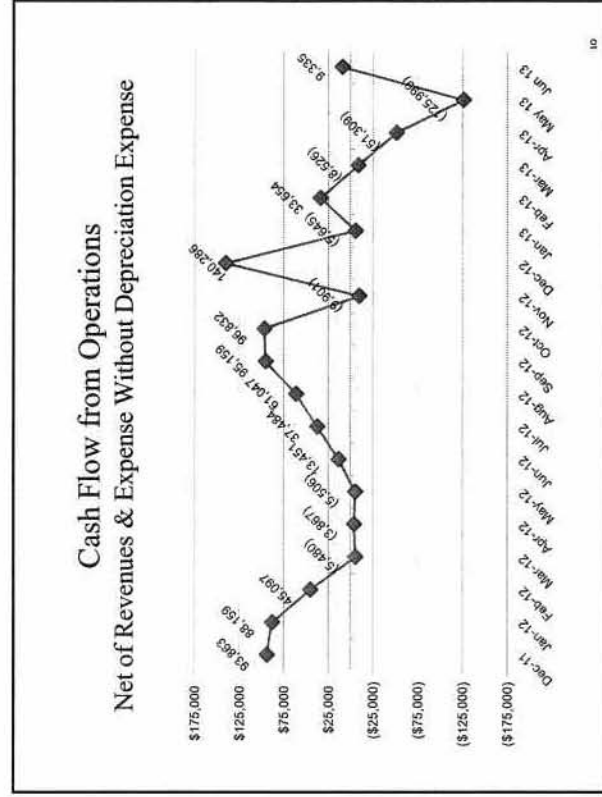
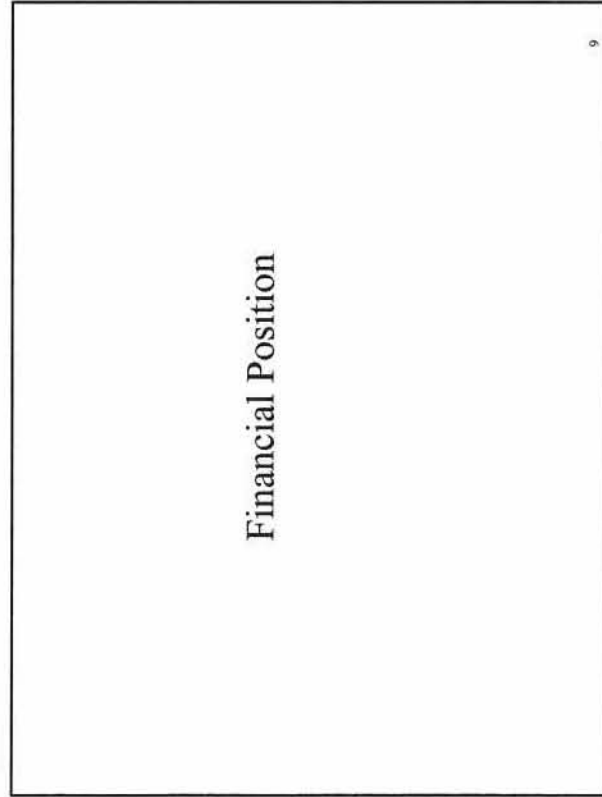


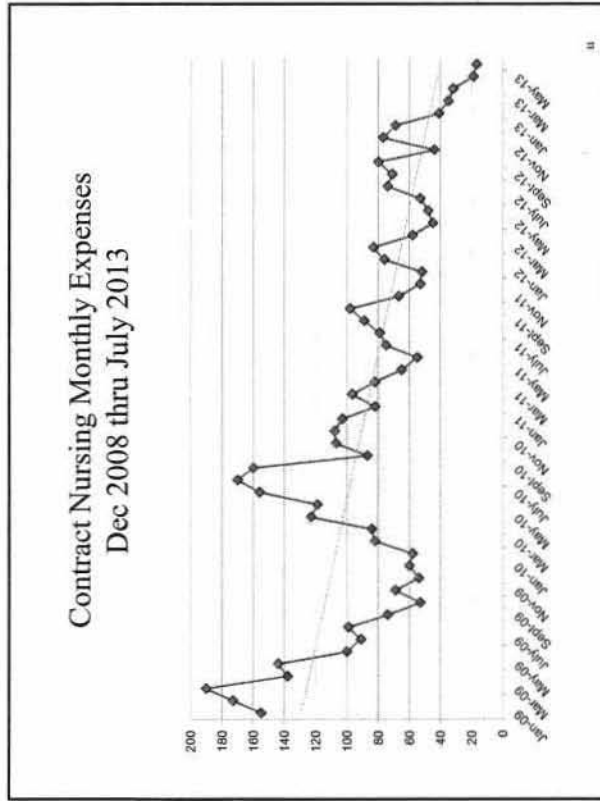
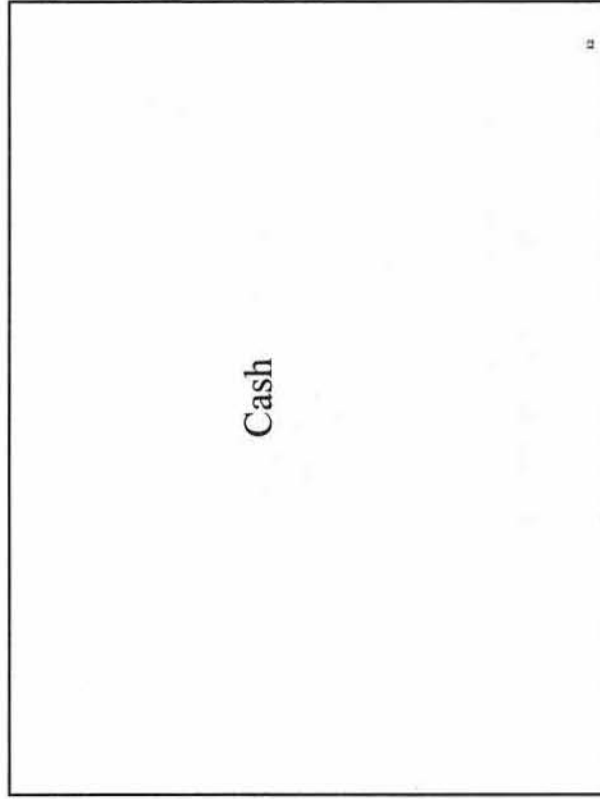
7

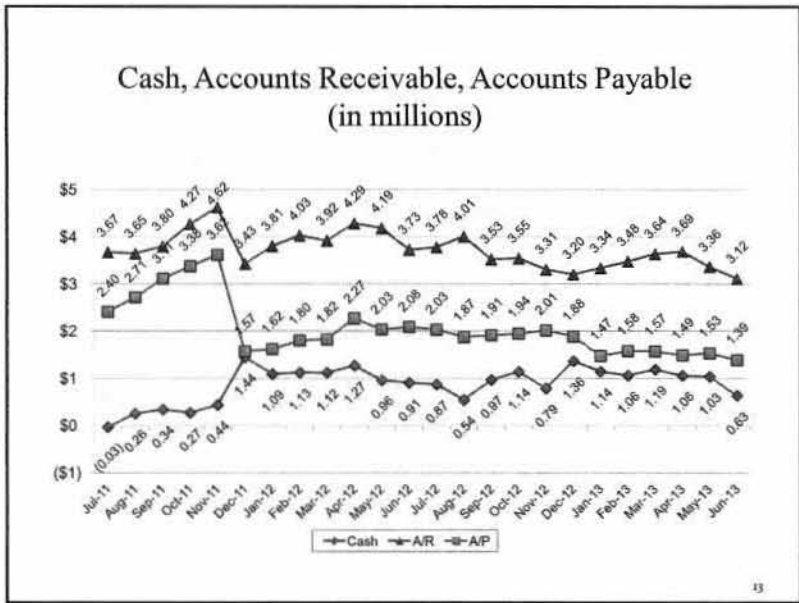
Current Census

- Admissions hit all time highs in June and July
- High number of Medicare discharges to home continue
- Census showing positive change

8







- ### Medicaid Updates
- Regular monthly payments continue
 - Payments currently 1-2 months in arrears
 - No changes anticipated in the short term

Summary

- Medicare census shows stronger growth in June and July
- Overall census showing slow but positive improvement due to high number of discharges to home
- Cannot control the % of residents that become long term residents versus home discharges
- High number of admissions is a reason for optimism – a strong indicator of effective strategic positioning with the hospitals and health plans

15