

# County Jail Separation Needs

Presentation to:  
Champaign County  
Board  
Facilities Committee



Tuesday, March 4, 2014  
Chief Deputy Allen E Jones



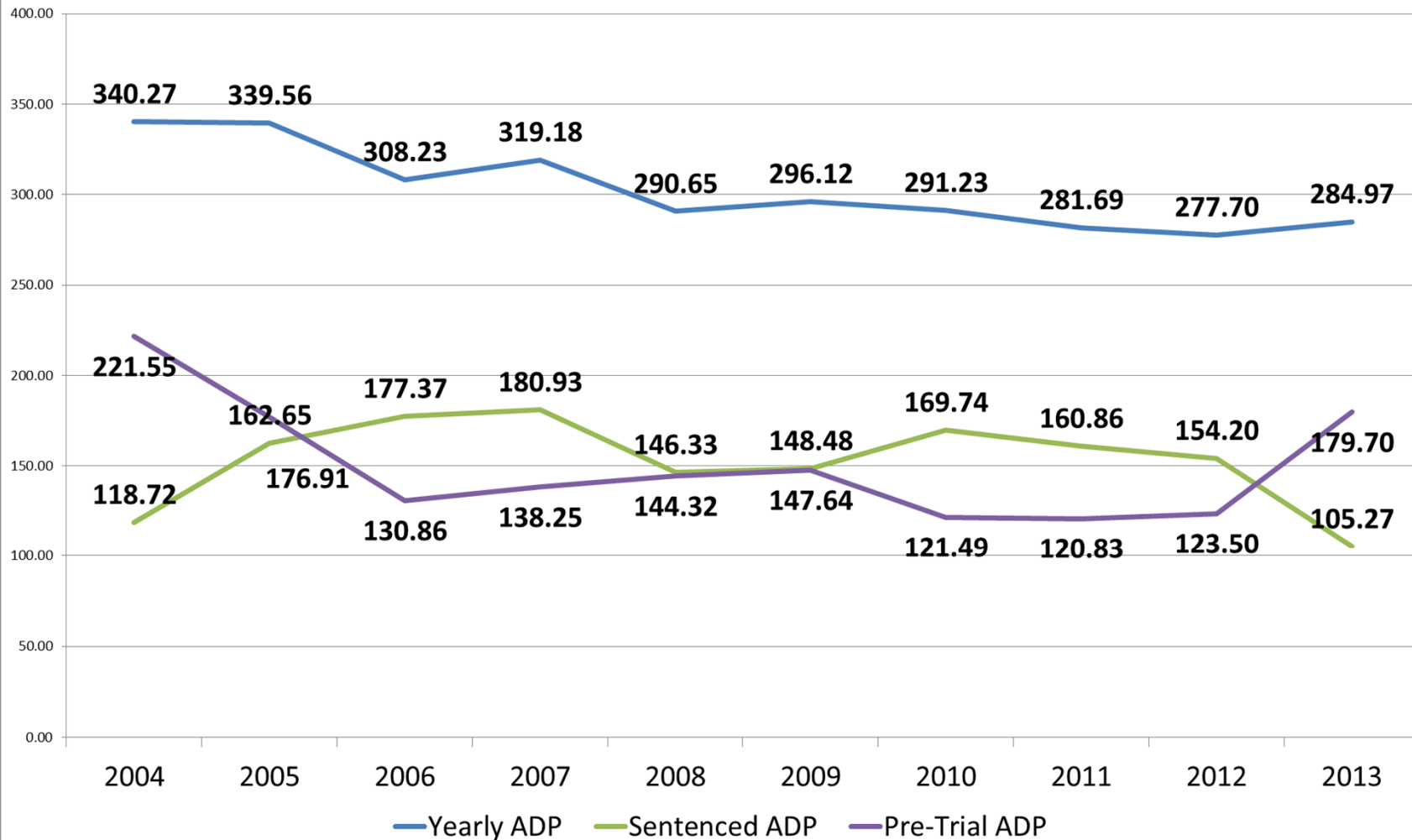
# Champaign County Jail

- Downtown Jail “bedded” capacity = 131
- Satellite Jail “bedded” capacity = 182
- Total “bedded” capacity = 313



# History

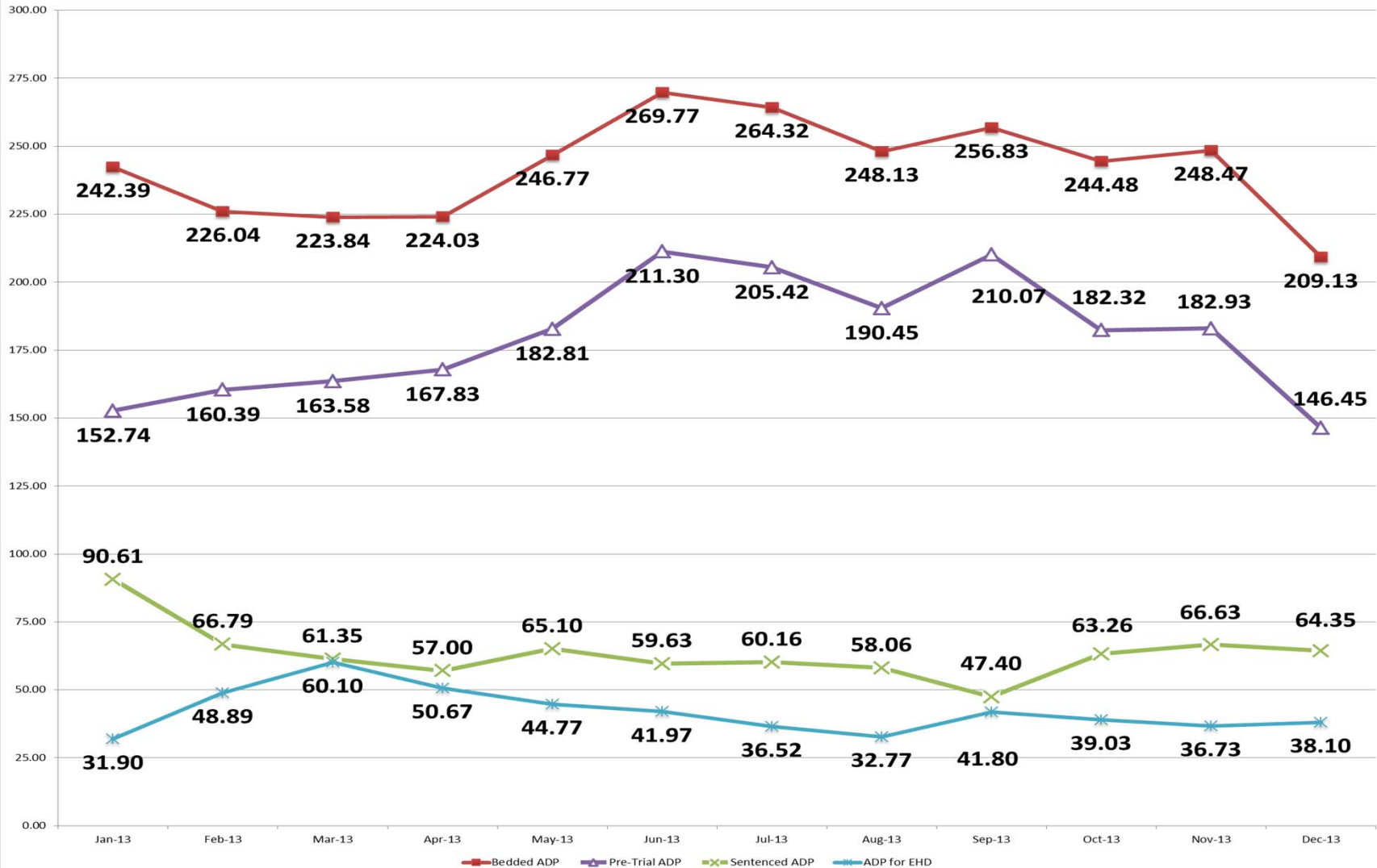
## Champaign County Yearly ADP Comparison 2004-2013





# 2013 Summary

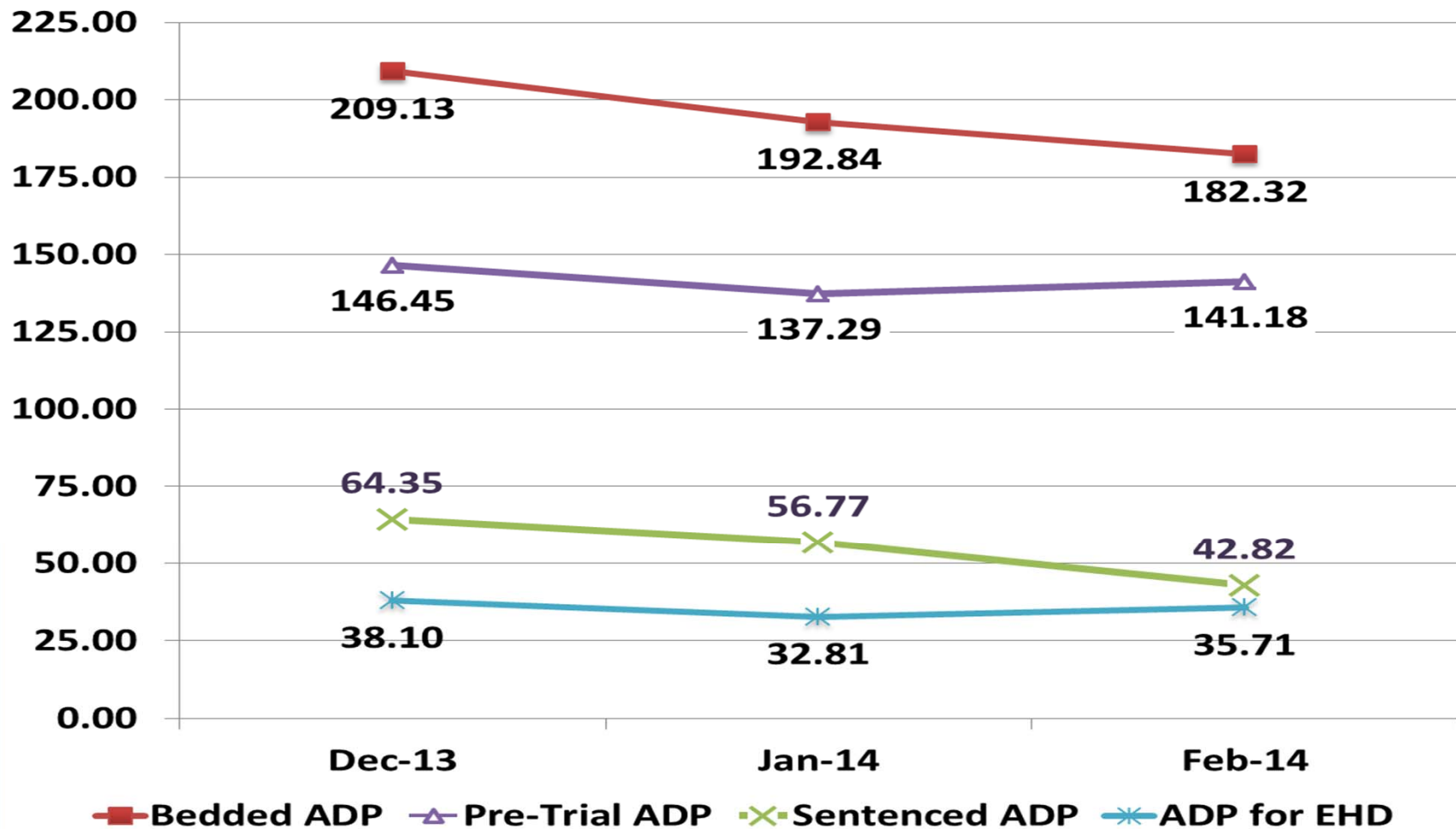
2013 Monthly Average Daily Population





# 2014 Summary

## 2014 Monthly Average Daily Population





# Sheriff Dan Walsh

“For years now I have told you that the specific layout of our jails is not conducive to the needs of the current inmate population and staff.”

Letter to Champaign County Chair & Board Members. 3/3/2014

“I do want to make it clear, even if our number of inmates is substantially reduced, we do need to provide the right kind of space to handle the current inmate problems, desirable programs, safe (for staff and inmates) & legally required separation, as well as the appropriate and cost effective security levels required.”

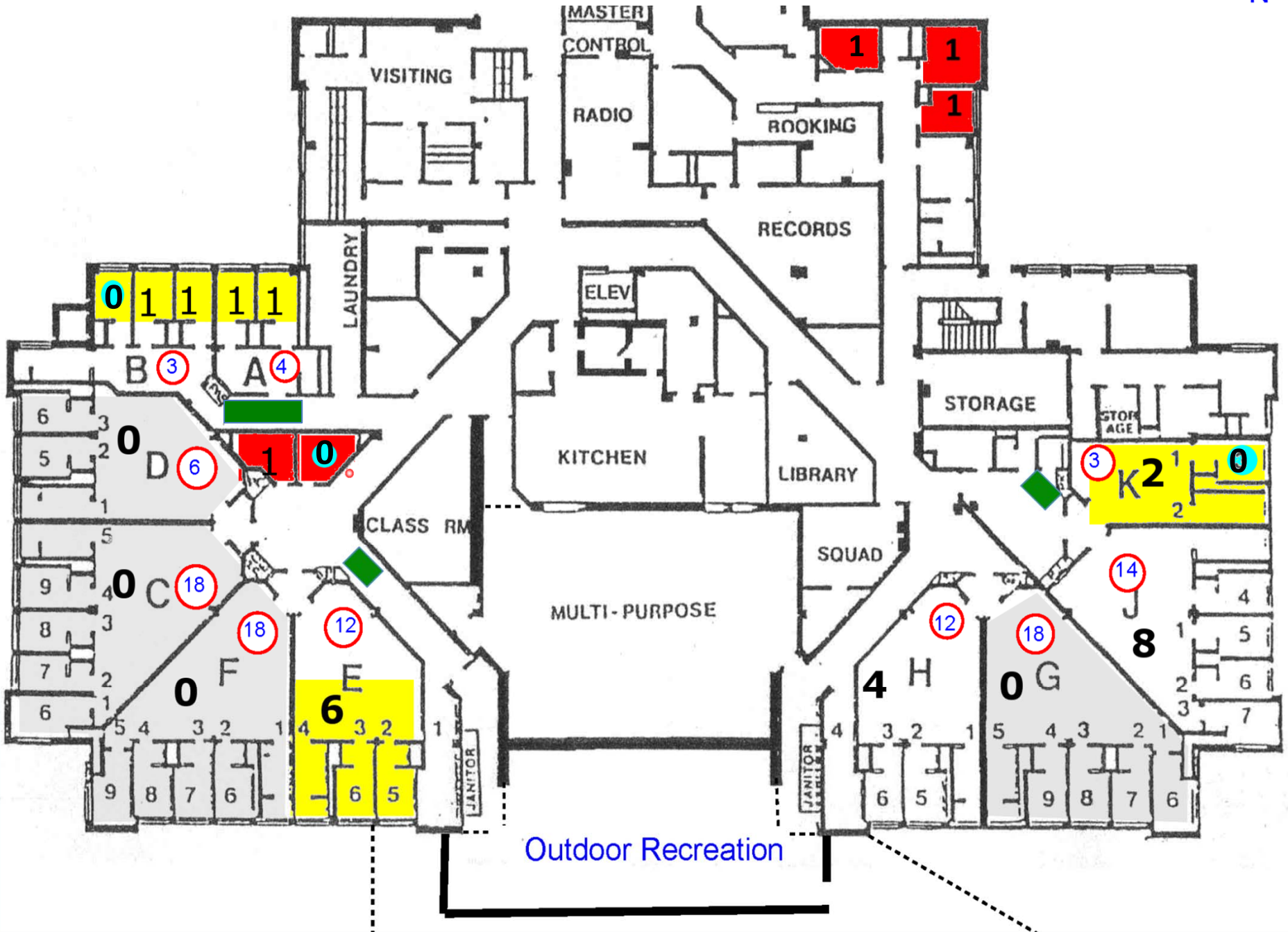
Letter to Champaign County Chair & Board Members. 9/25/2013



# Anatomy of Jail Population

DT Jail	131/28		January 10, 2014		Sat Jail	182/142
A Block	4 / <b>2*</b>	I-1 / <b>1*</b>	Population =	F-1 / <b>0</b>	B 1	26 / <b>16</b>
B Block	3 / <b>2*</b>	I-2 / <b>1*</b>	<b>170</b>	F-2 / <b>1*</b>	B 2	16 / <b>15</b>
C Block	18 / <b>0</b>	I-3 / <b>1*</b>		F-3 / <b>0</b>	B 3	32 / <b>24</b>
D Block	6 / <b>0</b>	I-4 / <b>1*</b>	<b>* Has Enemies</b>	H-1 / <b>1*</b>	B 4	26 / <b>16</b>
E Block	12 / <b>6*</b>	I-5 / <b>0</b>	<b>* Discipline</b>	H-2 / <b>1*</b>	A 1	13 / <b>11</b>
F Block	18 / <b>0</b>		<b>* Medical</b>	H-3 / <b>2</b>	A 2	15 / <b>11</b>
G Block	18 / <b>0</b>		<b>* Suicidal</b>	H-4 / <b>1</b>	A 3	27 / <b>19</b>
H Block	12 / <b>4</b>		<b>* Special Needs</b>	H-5 / <b>0</b>	A 4	27 / <b>22</b>
J Block	14 / <b>8</b>			H-6 / <b>0</b>		
K Block	3 / <b>2</b>			H-7 / <b>0</b>		
				H-8 / <b>2*</b>		

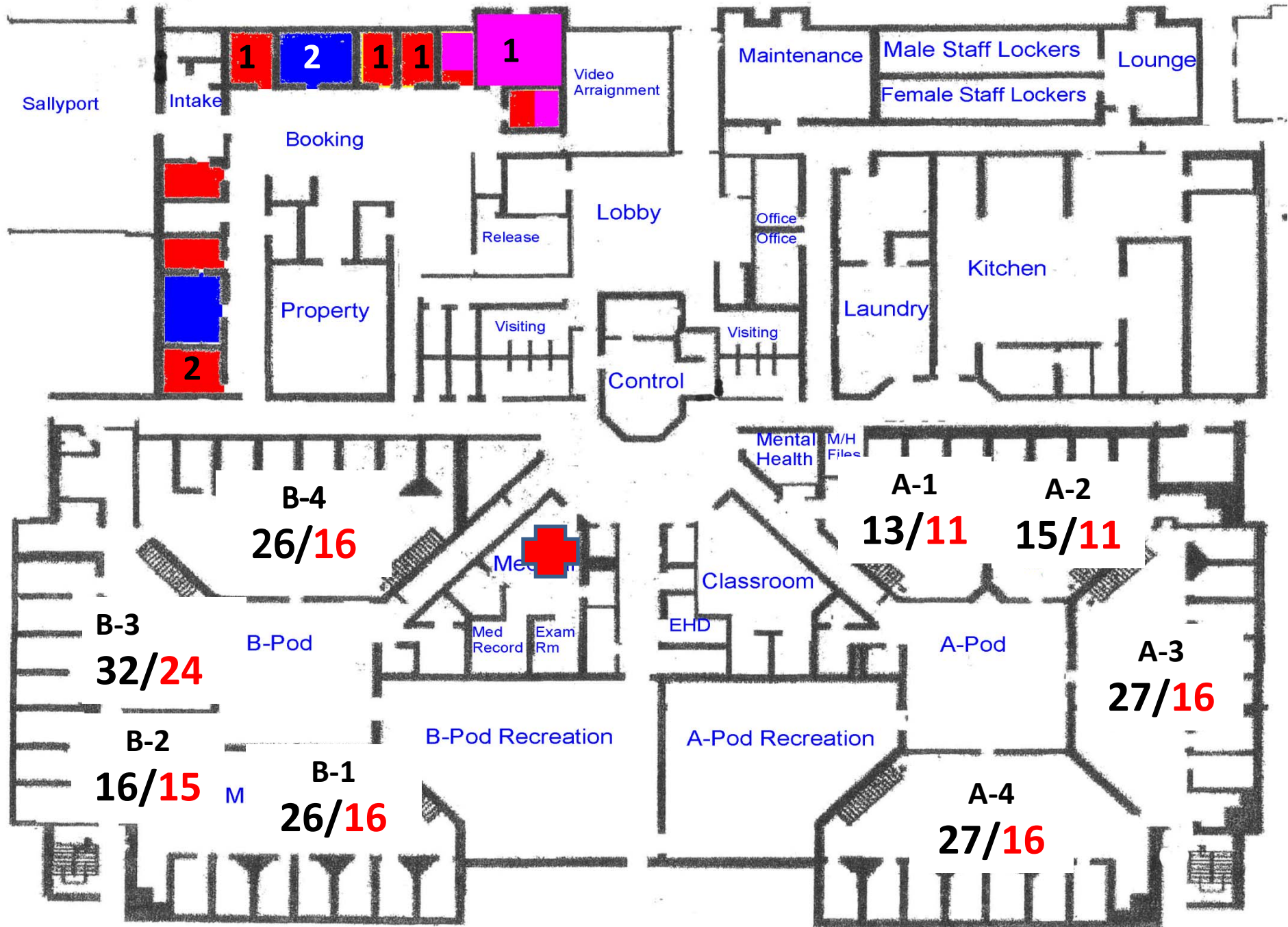
Downtown Jail Jan 10, 2014 Capacity = 131 Population = 28





SATELLITE JAIL

Jan 10, 2014 Capacity = 182 Population = 142





# Jail Population 3/2/2014

DT Jail	131/23		March 2, 2014		Sat Jail	182/132
A Block	4 / <b>2*</b>	I-1 / <b>0</b>	<b>Population =</b>	F-1 / <b>1*</b>	B 1	26 / <b>22</b>
B Block	3 / <b>2*</b>	I-2 / <b>0</b>	<b>155</b>	F-2 / <b>0</b>	B 2	16 / <b>14</b>
C Block	18 / <b>1</b>	I-3 / <b>0</b>		F-3 / <b>1*</b>	B 3	32 / <b>13</b>
D Block	6 / <b>0</b>	I-4 / <b>0</b>	<b>* Has Enemies</b>	H-1 / <b>1*</b>	B 4	26 / <b>19</b>
E Block	12 / <b>3*</b>	I-5 / <b>1*</b>	<b>* Discipline</b>	H-2 / <b>1*</b>	A 1	13 / <b>6</b>
F Block	18 / <b>0</b>		<b>* Medical</b>	H-3 / <b>3</b>	A 2	15 / <b>0</b>
G Block	18 / <b>7</b>		<b>* Suicidal</b>	H-4 / <b>1*</b>	A 3	27 / <b>22</b>
H Block	12 / <b>5</b>		<b>* Special Needs</b>	H-5 / <b>0</b>	A 4	27 / <b>21</b>
J Block	14 / <b>0</b>			H-6 / <b>0</b>		
K Block	3 / <b>2*</b>			H-7 / <b>7</b>		
				H-8 / <b>0</b>		