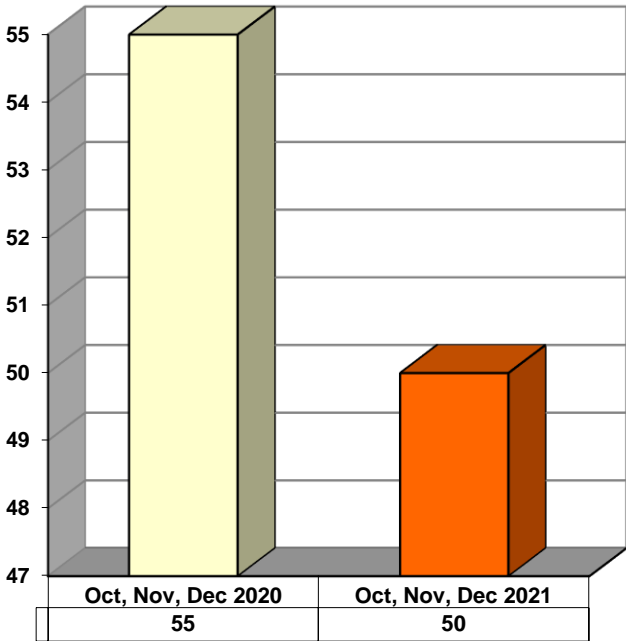
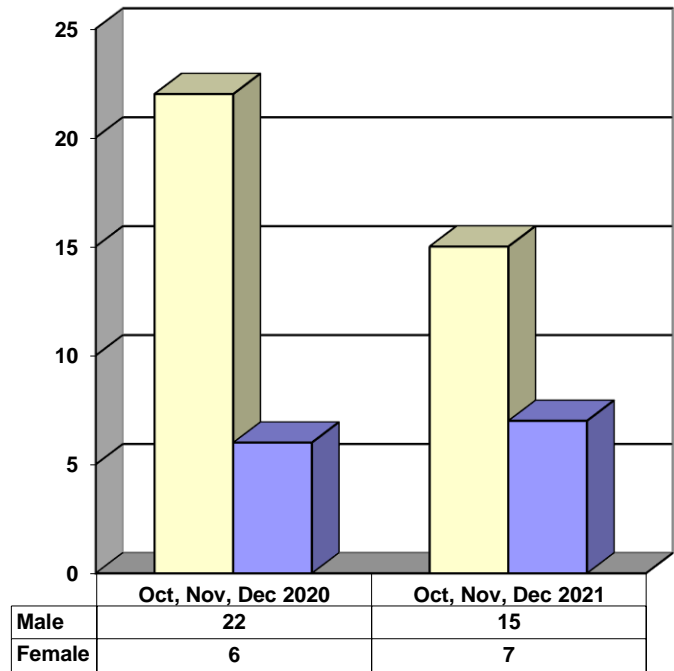


**JUVENILE SUPERVISION INFORMATION
MONTHS OF OCTOBER, NOVEMBER, AND DECEMBER 2021
(Compared to Prior Year)**

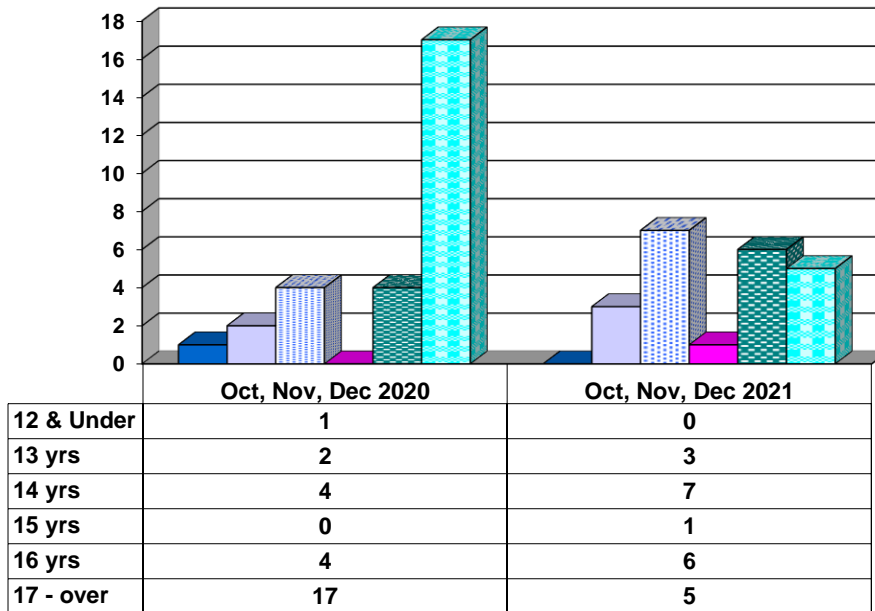
Juvenile Delinquency Petitions Filed



Gender Demographics for Juvenile Admissions

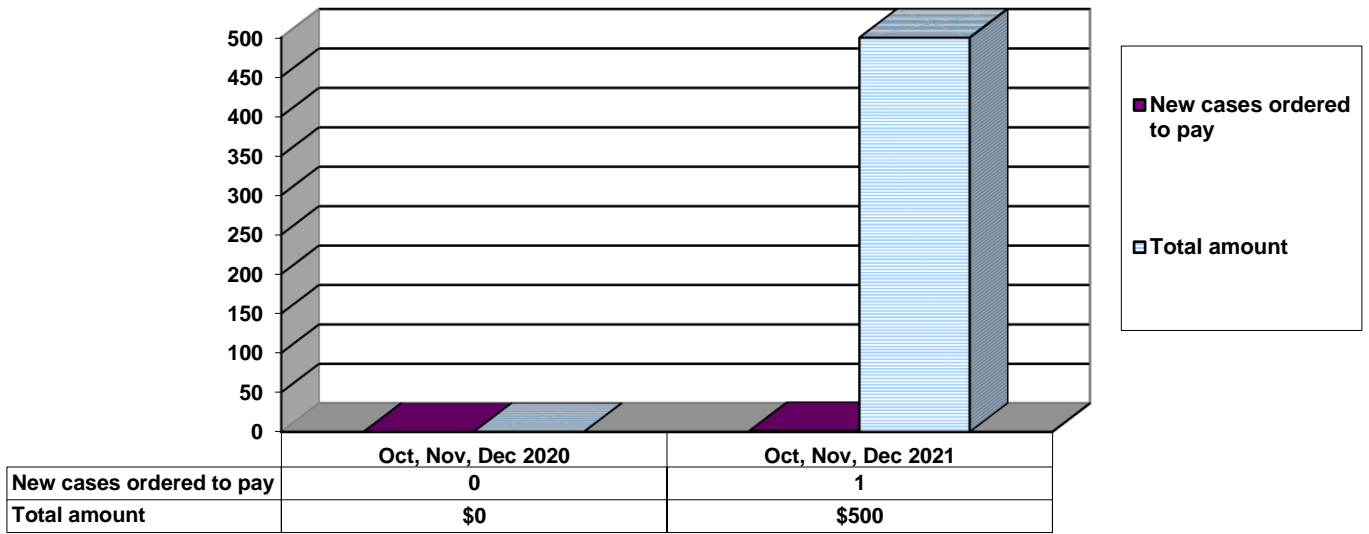


Age Demographics for Juvenile Admissions

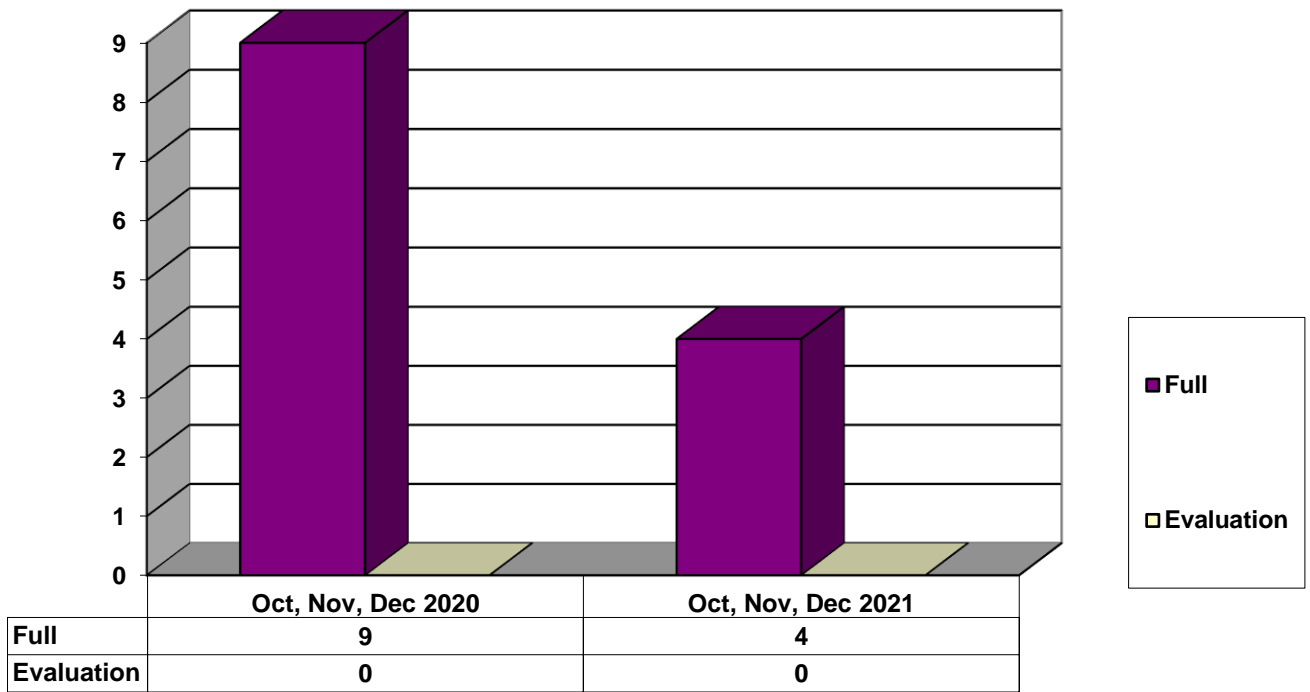


12 & Under
 13 yrs
 14 yrs
 15 yrs
 16 yrs
 17 - over

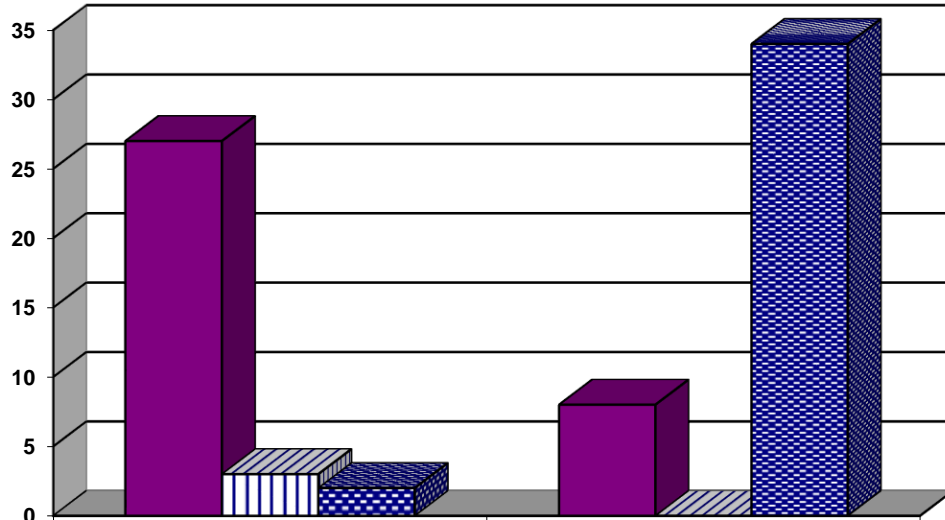
Restitution Ordered in New Juvenile Cases



Commitments to Illinois Department of Juvenile Justice



Investigations Completed by Juvenile Division



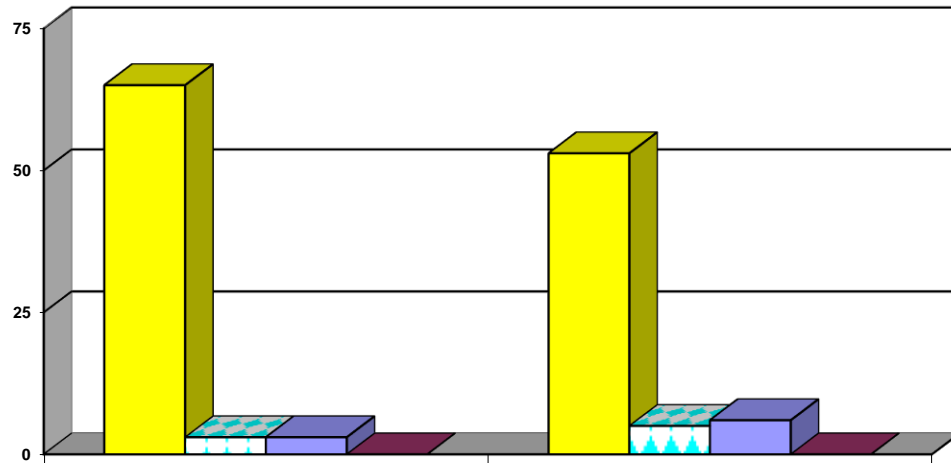
	Oct, Nov, Dec 2020	Oct, Nov, Dec 2021
Social Histories	27	8
Supplemental Social History	3	0
Remission/Review	2	34

■ Social Histories

▨ Supplemental Social History

■ Remission/Review

Juvenile Caseload at End of Reporting Periods



	December 2020	December 2021
Probation	65	53
Continued under Supervision	3	5
Informal	3	6
Other	0	0

■ Probation

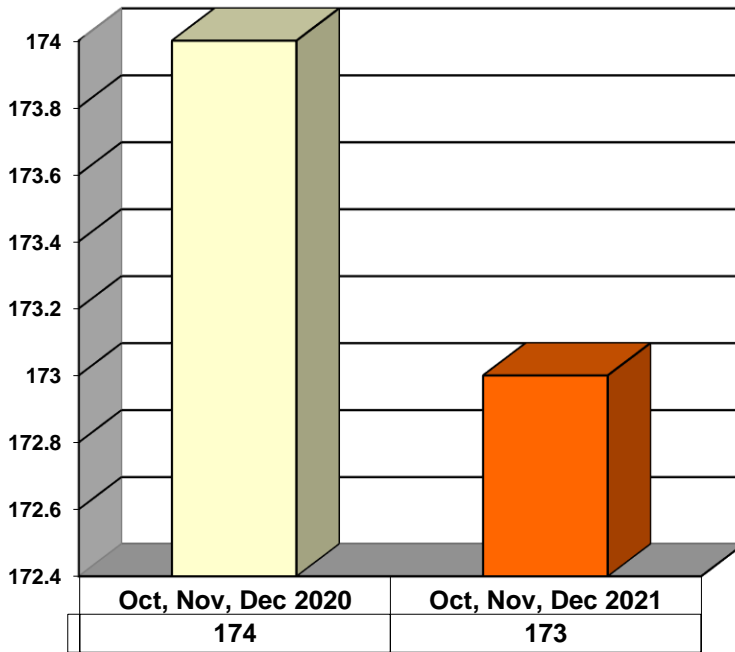
▨ Continued under Supervision

■ Informal

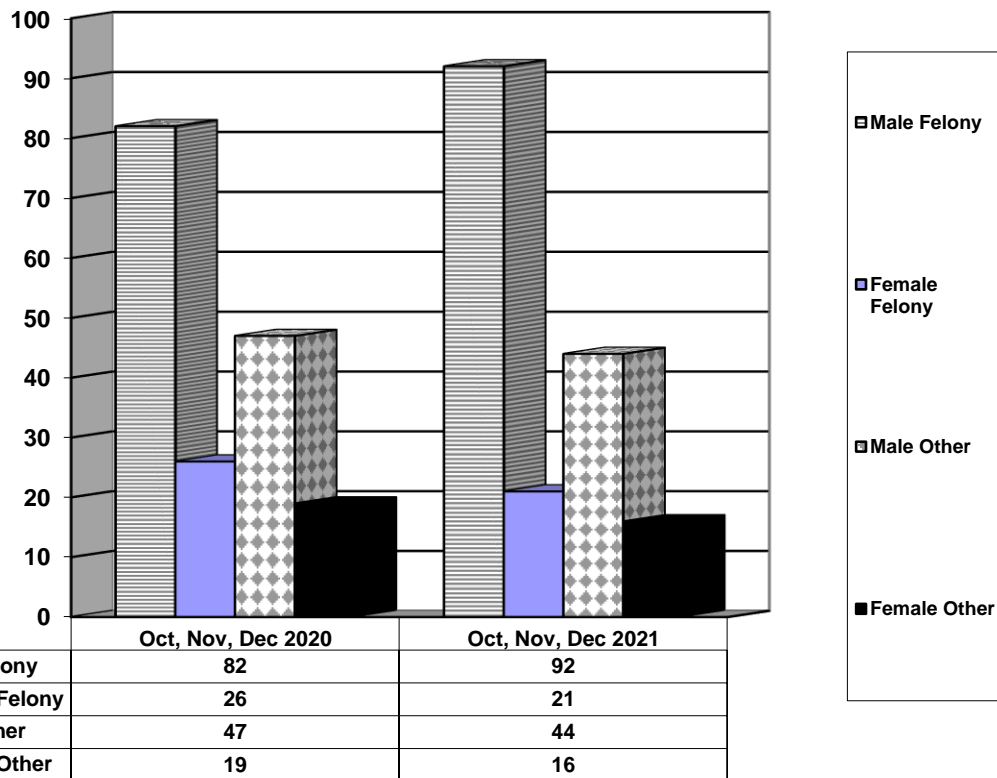
■ Other

**ADULT SUPERVISION INFORMATION
MONTHS OF OCTOBER, NOVEMBER, AND DECEMBER 2021
(Compared to Prior Year)**

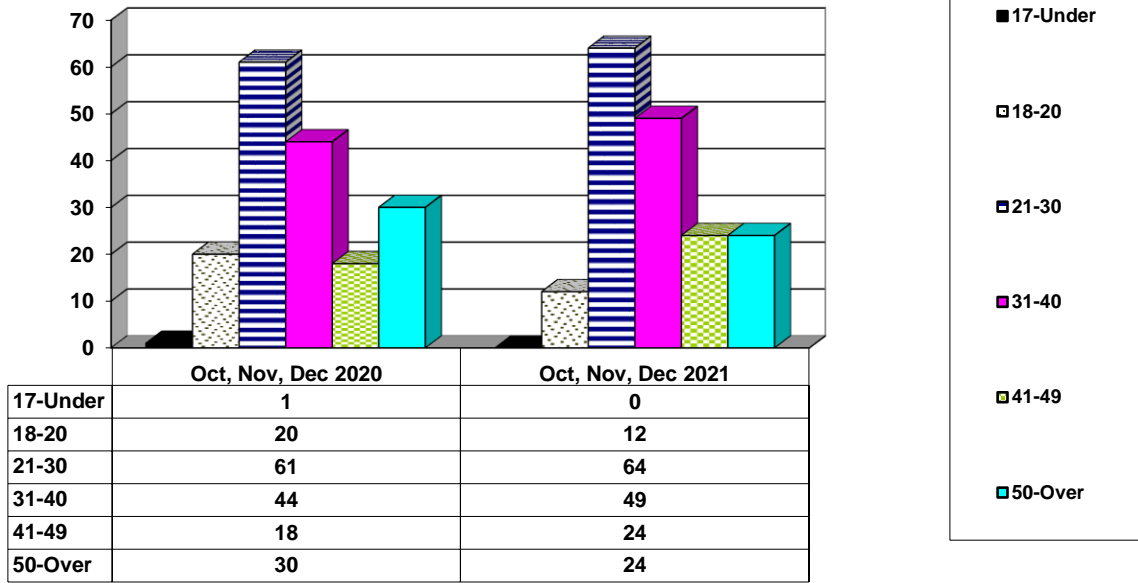
Adult Intakes Completed



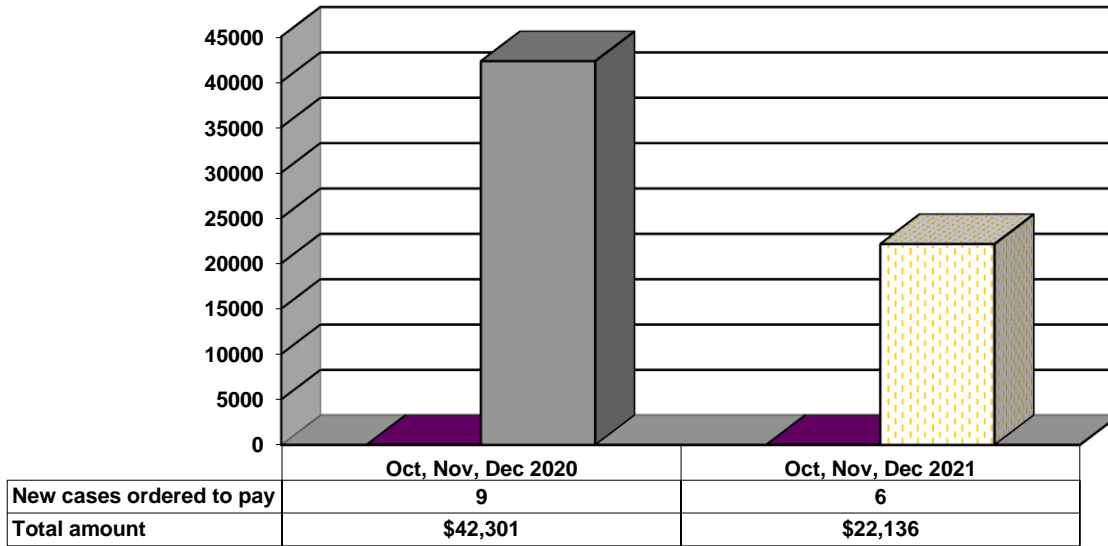
Gender Demographics for Adult Intakes



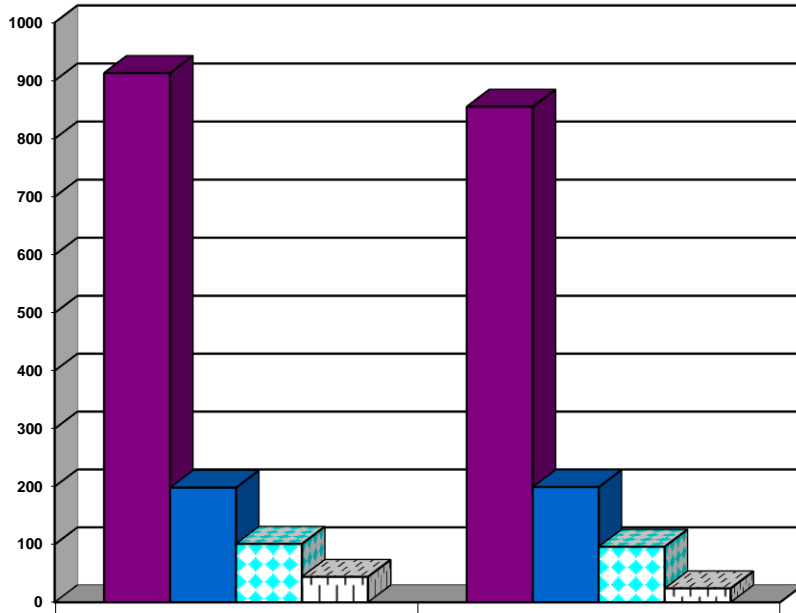
Age Demographics for Adult Intakes



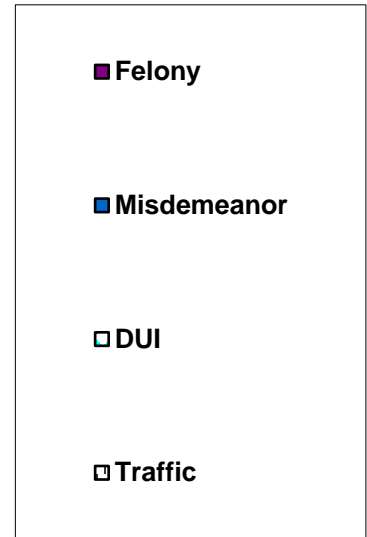
Restitution Ordered in New Adult Cases



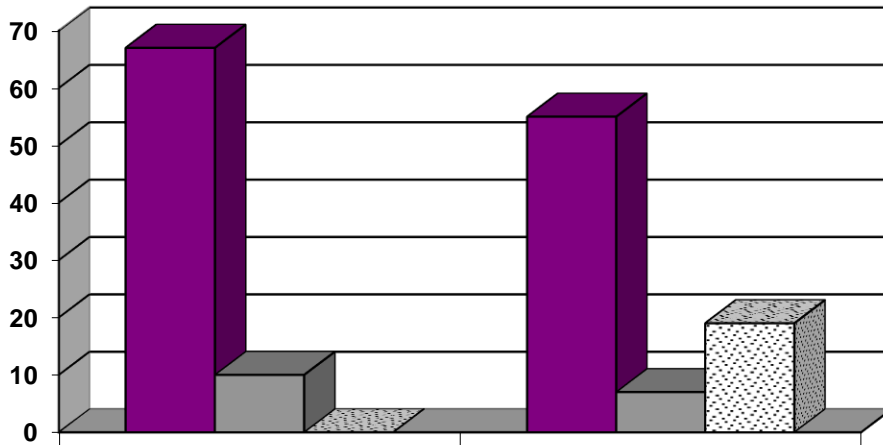
Breakdown of Adult Caseload at End of Reporting Periods



	December 2020	December 2021
Felony	913	855
Misdemeanor	198	199
DUI	101	96
Traffic	44	24



Adult Investigations Completed



	Oct, Nov, Dec 2020	Oct, Nov, Dec 2021
Presentence Reports	67	55
Pre-trial/Bond Reports	10	7
Record Checks	0	19



Commitments to Illinois Department of Corrections

