

# CHAMPAIGN COUNTY PLAZA - PARKING GARAGE RENO.

102 E MAIN ST  
URBANA, IL, 61801

ISSUED FOR BID 09/08/2022



bailey edward

T 217.363.3375  
F 312.440.2303  
WWW.BAILEYEDWARD.COM

1103 SOUTH MATTIS AVE  
CHAMPAIGN, IL  
61821-4829

©2022 BAILEY EDWARD DESIGN  
DESIGN FIRM LICENSE NO. 184-001962

STRUCTURAL ENGINEER  
ENGINEERING RESOURCE ASSOCIATES  
2416 GALEN DRIVE  
CHAMPAIGN, IL 61821  
217.351.6268

## ABBREVIATIONS

A	ACOUSTICAL CEILING TILE	FE	FIRE EXTINGUISHER	PNT	PAINT/PAINTED
ACT	AREA DRAIN	FEC	FIRE EXTINGUISHER CABINET	PSI	POUNDS PER SQUARE INCH
AD	ABOVE FINISHED FLOOR	FF TO FF	FINISH FACE TO FINISH FACE	PT	PRESSURE TREATED
ALUM	ALUMINUM	FFE	FINISHED FLOOR ELEVATION	PVC	POLYVINYL CHLORIDE
ANOD	ANODIZED	FLR	FLOOR	R	RADIUS
APPROX	APPROXIMATE	FND	FOUNDATION	RBR	RUBBER
B		FO	FACE OF	RCP	REFLECTED CEILING PLAN
BSMT	BASEMENT	FTG	FOOTING	RD	ROOF DRAIN
BTTM	BOTTOM OF	G		REINF	REINFORCED
C		GA	GAUGE	REQD	REQUIRED
C/C	CENTER TO CENTER	GALV	GALVANIZED	RM	ROOM
CIP	CAST IN PLACE	GWB	GYPSPUM WALL BOARD	S	
CJ	CONTROL JOINT	H		SF	SQUARE FOOT
CLG	CEILING	HC	HOLLOW CORE	SM	SIMILIAR
CLR	CLEAR	HM	HOLLOW METAL	SOG	SLAB ON GRADE
CMU	CONCRETE MASONRY UNIT	HVAC	HEATING, VENTILATING, AND AIR CONDITIONING	SPEC	SPECIFIED OR SPECIFICATION
CO	CLEAN OUT	I		SPK	SPRINKLER
COL	COLUMN	INSUL	INSULATION / INSULATED	SQ	SQUARE
CONC	CONCRETE	INT	INTERIOR	SSTL	STAINLESS STEEL
CONST JT	CONSTRUCTION JOINT	IRGWB	IMPACT RESISTANT GYPSUM WALLBOARD	STC	SOUND TRANSMISSION COEFFICIENT
CONT	CONTINUOUS	L		STL	STEEL
CPT	CARPET	LAV	LAVATORY	STRUCT	STRUCTURAL
CT	CERAMIC TILE	M		T	
D		MATL	MATERIAL	T&G	TONGUE & GROOVE
DBL	DOUBLE	MAX	MAXIMUM	TI	TOP OF
DEMO	DEMOLISH	MECH	MECHANICAL	TD	TELEPHONE/DATA
DIA	DIAMETER	MFR	MANUFACTURER	TELE	TELEPHONE
DIMS	DIMENSIONS	MIN	MINIMUM	TLT	TOILET
DN	DOWN	MO	MASONRY OPENING	TOC	TOP OF CONCRETE
DTL	DETAIL	MARGWB	MOISTURE-RESISTANT GYPSUM WALL BOARD	TOS	TOP OF STEEL / STRUCTURE
DWG	DRAWING	MTD	MOUNTED	TOW	TOP OF WALL
E		MTL	METAL	TYP	TYPICAL
EA	EACH	N		U	
EJ	EXPANSION JOINT	NIC	NOT IN CONTRACT	UNO	UNLESS NOTED OTHERWISE
EL	ELEVATION	NO	NUMBER	V	
ELEC	ELECTRICAL	NOM	NOMINAL	VHI	VERY HIGH IMPACT
ELEV	ELEVATOR / ELEVATION	O		VIF	VERIFY IN FIELD
EPDM	ETHYLENE PROPYLENE DIENE ROOFING	OC	ON CENTER	VP	VISION PANEL
EQ	EQUAL	OH	OPPOSITE HAND	W	
EXIST	EXISTING	OZ	OUNCE	WI	WITH
EXT	EXTERIOR	P		WD	WOOD
F		PCC	PRE-CAST CONCRETE	WWF	WELDED WIRE FABRIC
FD	FLOOR DRAIN	PLUMB	PLUMBING		

## DRAWING MATRIX

Sheet Number	Sheet Name	ISSUED FOR BID - 09/08/2022				
GENERAL						
G001	COVER					
ARCHITECTURAL						
AG100	ADA PEDESTRIAN RAMP AND STAIR REPAIR					
STRUCTURAL						
SG100	UPPER LEVEL SITE PLAN					
SG101	LOWER LEVEL CONCRETE BEAM & STEEL FRAMING PLAN					
SG200	DETAILS					
SG201	DETAILS					
SG202	DETAILS					

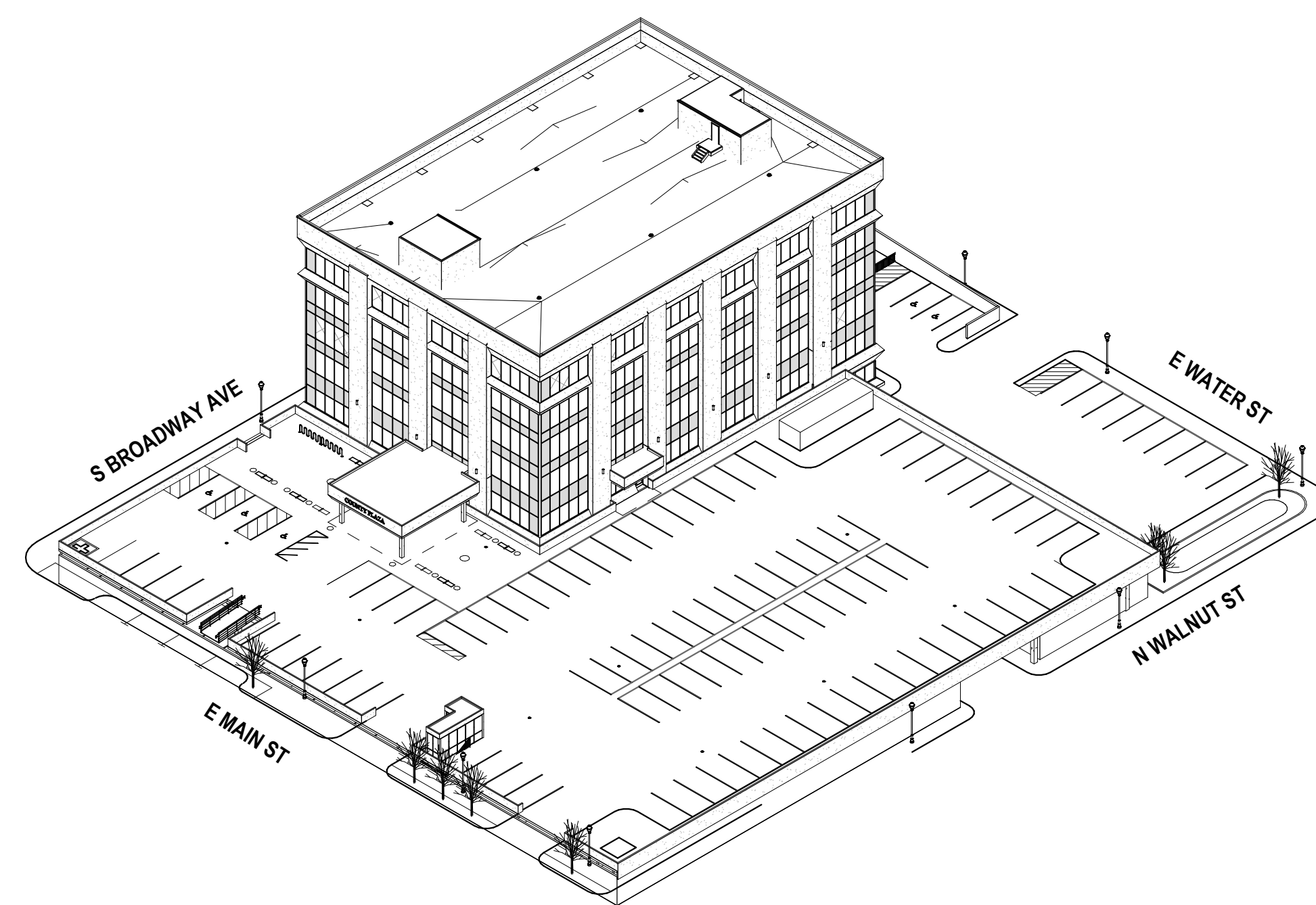
## SCOPE OF WORK SUMMARY

Work will include structural reinforcement of structural members in a covered and open parking garage, installation of an ADA compliant entrance ramp supported by existing structural framing, and surface modification of existing exterior stair supported by existing structural framing.

## SYMBOLS LEGEND

	DETAIL NUMBER		ELEVATION TAG		ALIGN/FLUSH SURFACES
	SHEET NUMBER		DOOR TAG		SIGNAGE TAG
	ROOM NAME		SECTION TAG		ROOM HEIGHT
	ROOM NUMBER		DETAIL TAG		WINDOW TAG
	SQUARE FOOTAGE		WALL TAG		EQUIPMENT TAG
	INTERIOR ELEVATION TAG		DETAIL TAG		KEYNOTE
	NORTH ARROW		DETAIL TAG		
	DIMENSION STRING		GRID LINE		

## PROJECT AXON - FOR INFORMATION ONLY



## LOCATION MAP



102 E MAIN ST, URBANA, IL 61801

DATE	DRAWING SET TITLE
09/08/2022	ISSUED FOR BID

CHAMPAIGN COUNTY PLAZA  
PARKING GARAGE RENOVATION  
ITB#2202-007  
102 E. Main St., Urbana, IL 61801

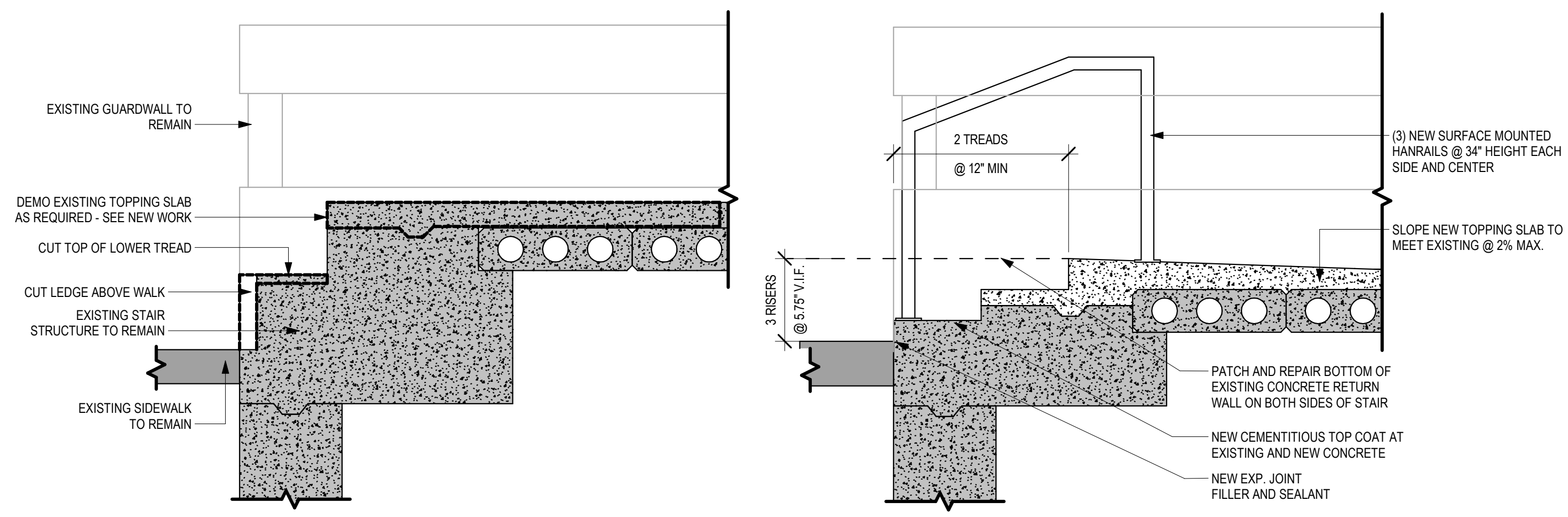
COVER

BE Project No. 021212

Drawn By: Author

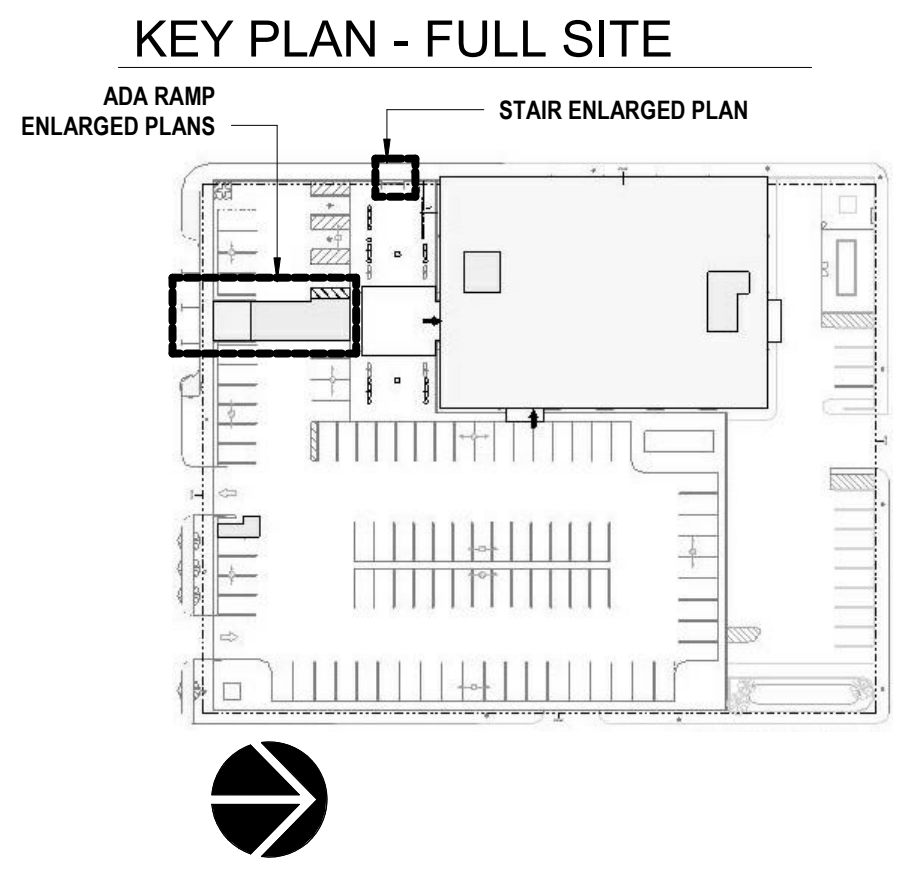
Drawing No. G001

BIM 360/021212 - Champaign County Plaza Renovation/021212 - CHAMPAIGN COUNTY PLAZA\_R21\_CENTRAL.rvt  
09/09/2022



**EXISTING WEST STEPS - DEMO SECTION**  
1" = 1'-0"

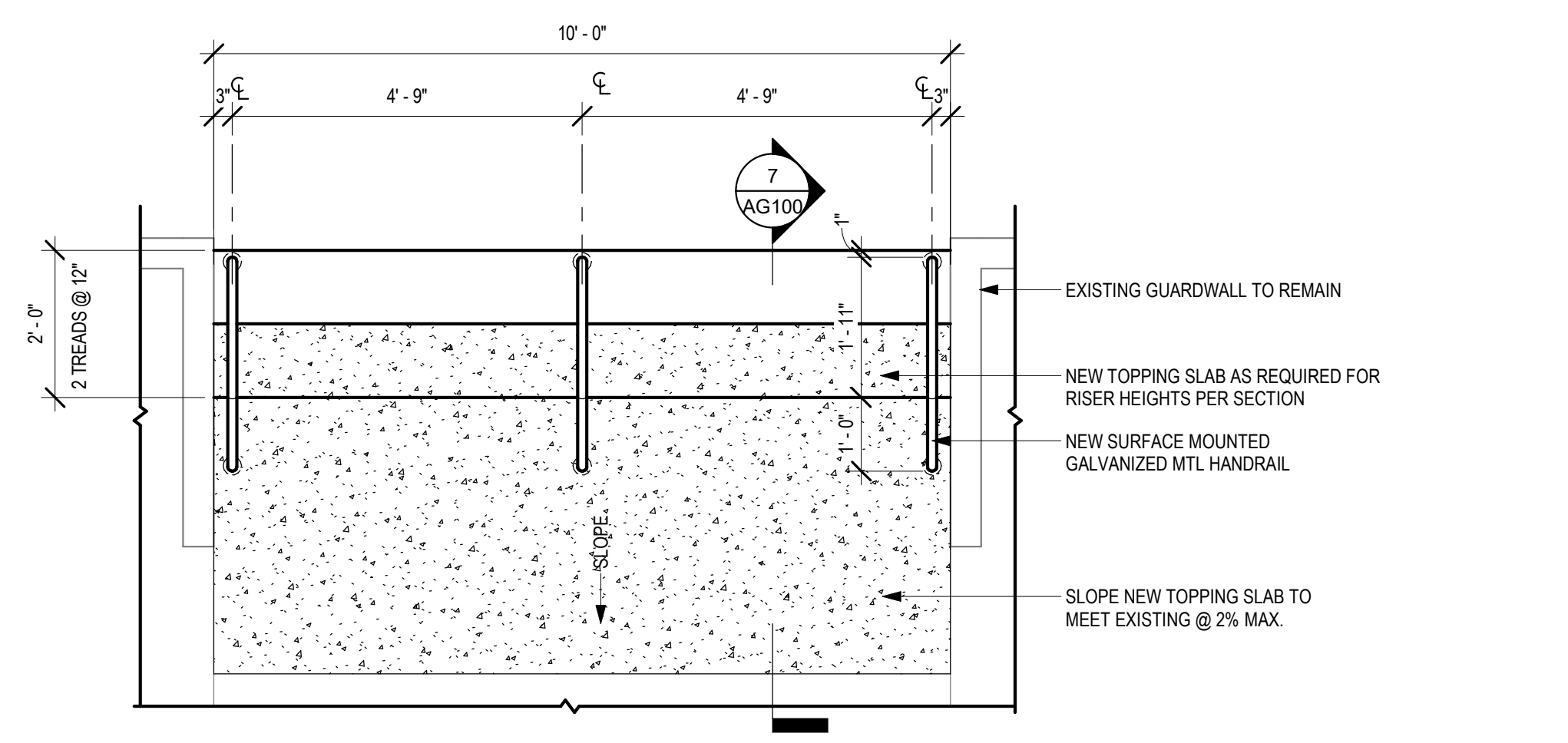
**EXISTING WEST STEPS - NEW WORK SECTION**  
1" = 1'-0"



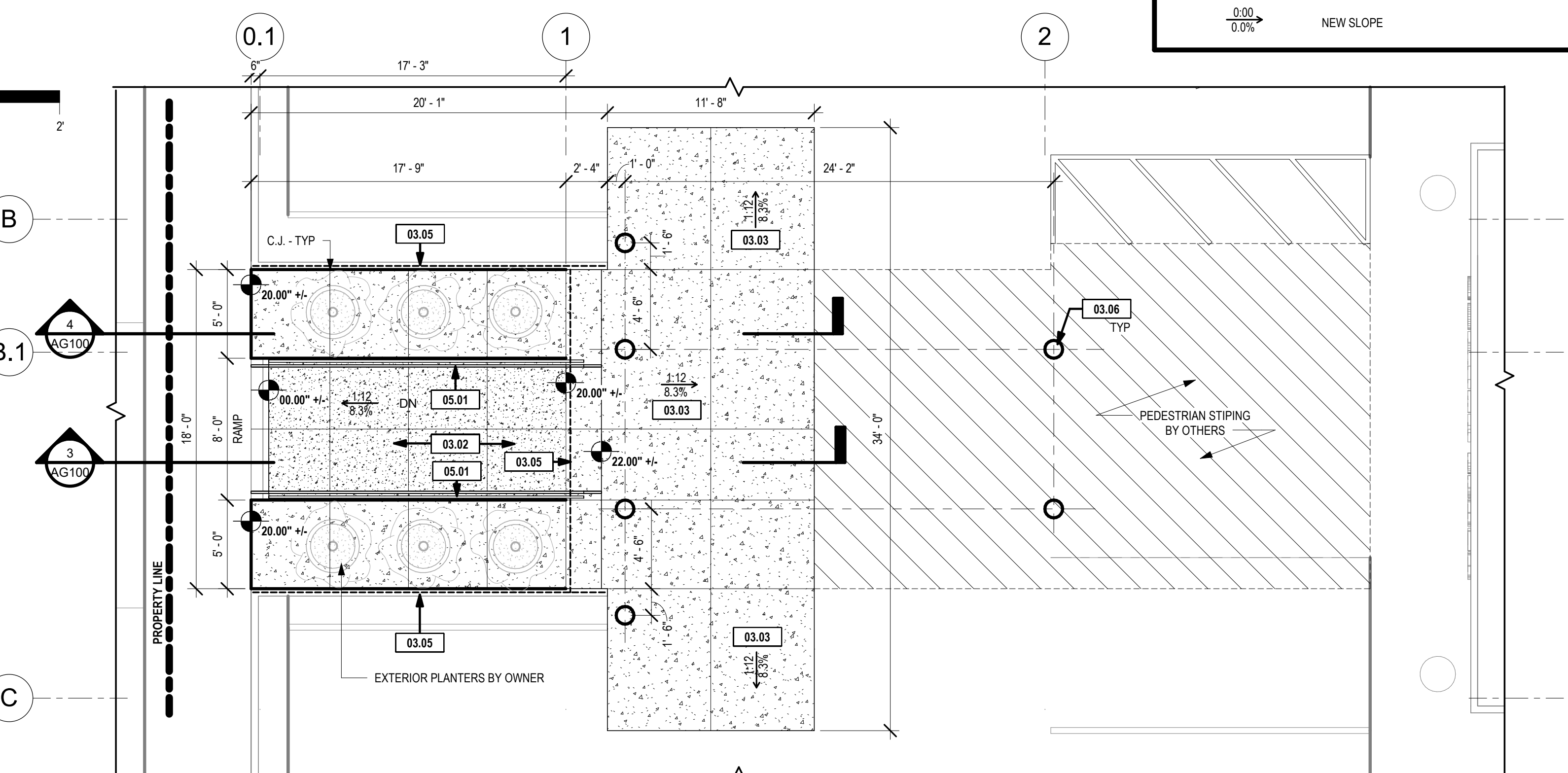
SHEET KEYNOTES	
02.32	DEMOLISH EXISTING EXTERIOR RAMP, REFER TO NEW WORK PLANS & STRUCTURAL.
02.35	DEMO EXISTING TOPPING CONCRETE, REFER TO NEW WORK PLANS & STRUCTURAL.
03.02	INSTALL NEW PRECAST CONCRETE RAMP SLOPED 1:12 (8.3%) SEE STRUCTURAL FOR CLARIFICATION.
03.03	INSTALL NEW TOPPING SLAB SLOPED 1:12 TO MEET EXISTING SURFACE. SEE STRUCTURAL FOR CLARIFICATION.
03.04	INSTALL NEW CONCRETE OVER EXPANDED POLYSTYRENE FOAM. SEE STRUCTURAL FOR CLARIFICATION.
03.05	POLYURETHANE SEALANT, BACKER ROD & PREFORMED JOINT FILLER. SEE STRUCTURAL FOR CLARIFICATION.
03.06	INSTALL NEW 36" HEIGHT, 8" DIAM CONCRETE BOLLARDS. BOB.
05.01	INSTALL NEW ADA COMPLIANT HANDRAIL. SEE SPEC 05.52.13.

NOTE:  
BIDDERS TO PROVIDE ALTERNATE FOR [19'-6"] LINEAR LED LIGHT UNDER NEW ADA RAMP HANDRAIL.

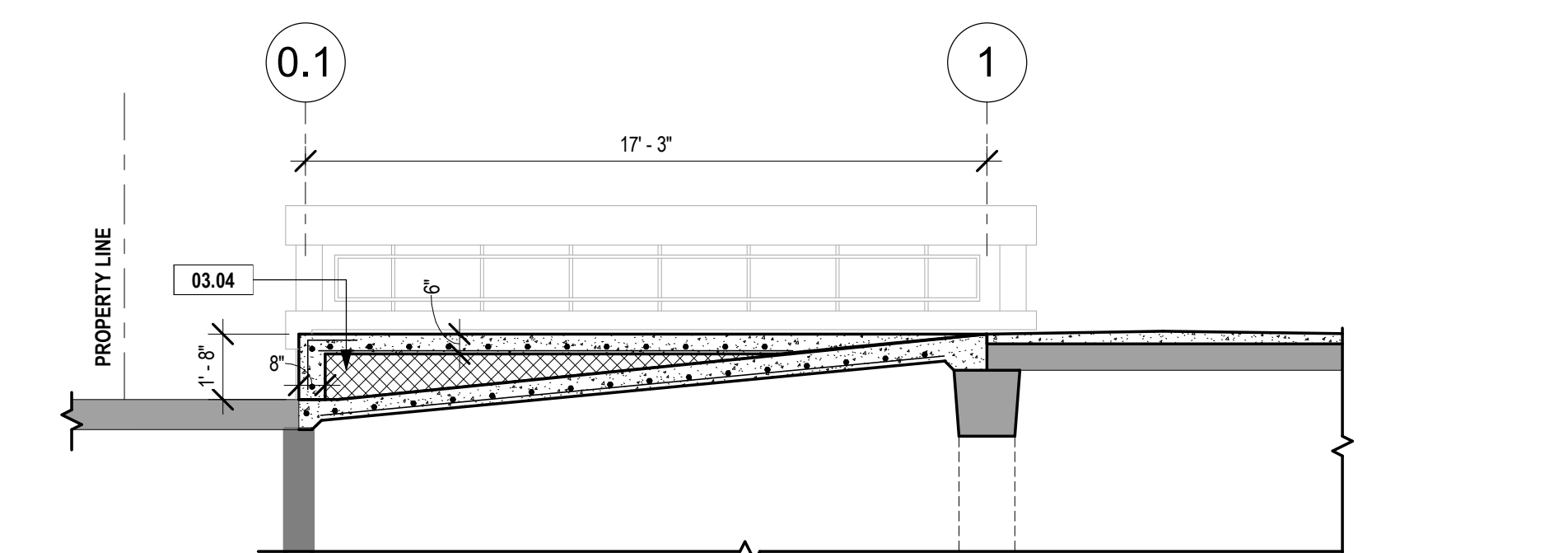
SITE PLAN LEGEND	
	EXISTING CONSTRUCTION TO REMAIN
	EXISTING CONCRETE DECK & TOPPING SLAB TO BE DEMOLISHED
	EXISTING TOPPING SLAB TO BE DEMOLISHED
	NEW PEDESTRIAN STRIPING BY OTHERS
	NEW ADA HANDRAIL
	EXTENT OF JOINT FILLER AT NEW EXISTING CONSTRUCTION
	PROPERTY LINE
	NEW SPOT ELEVATION (+/-)
	NEW SLOPE



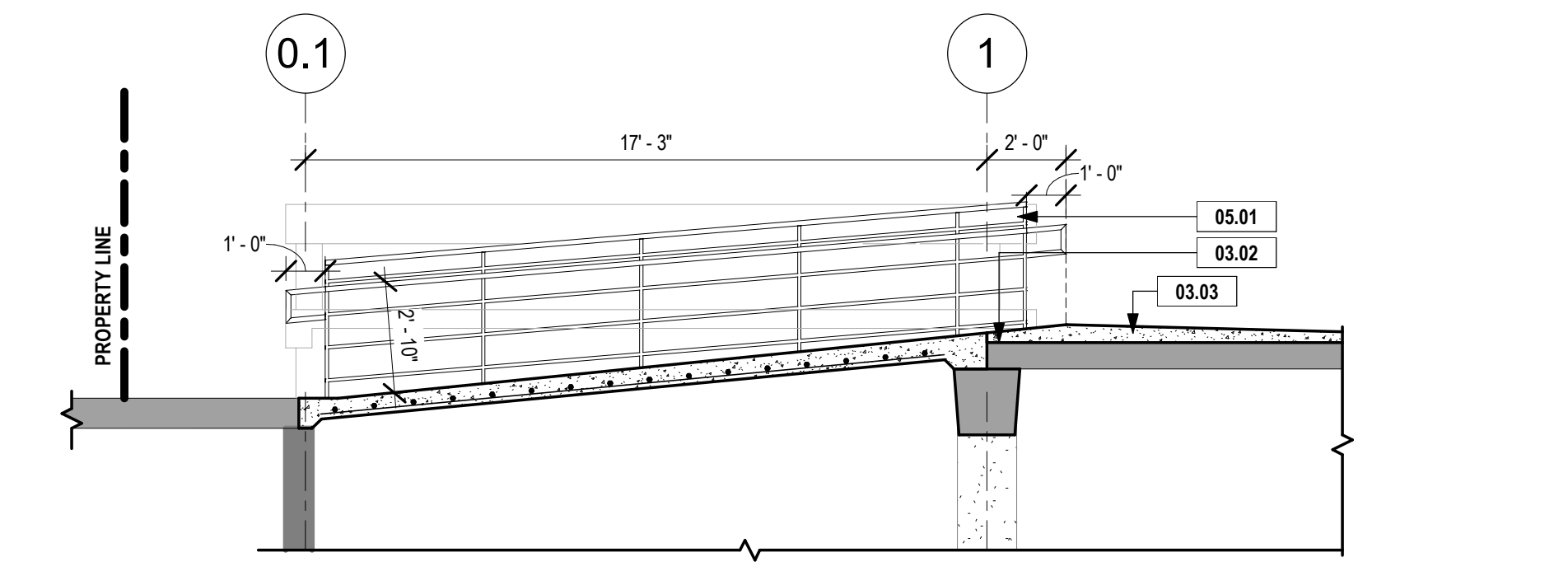
**EXTERIOR STAIR - NEW WORK PLAN**  
1/2" = 1'-0"



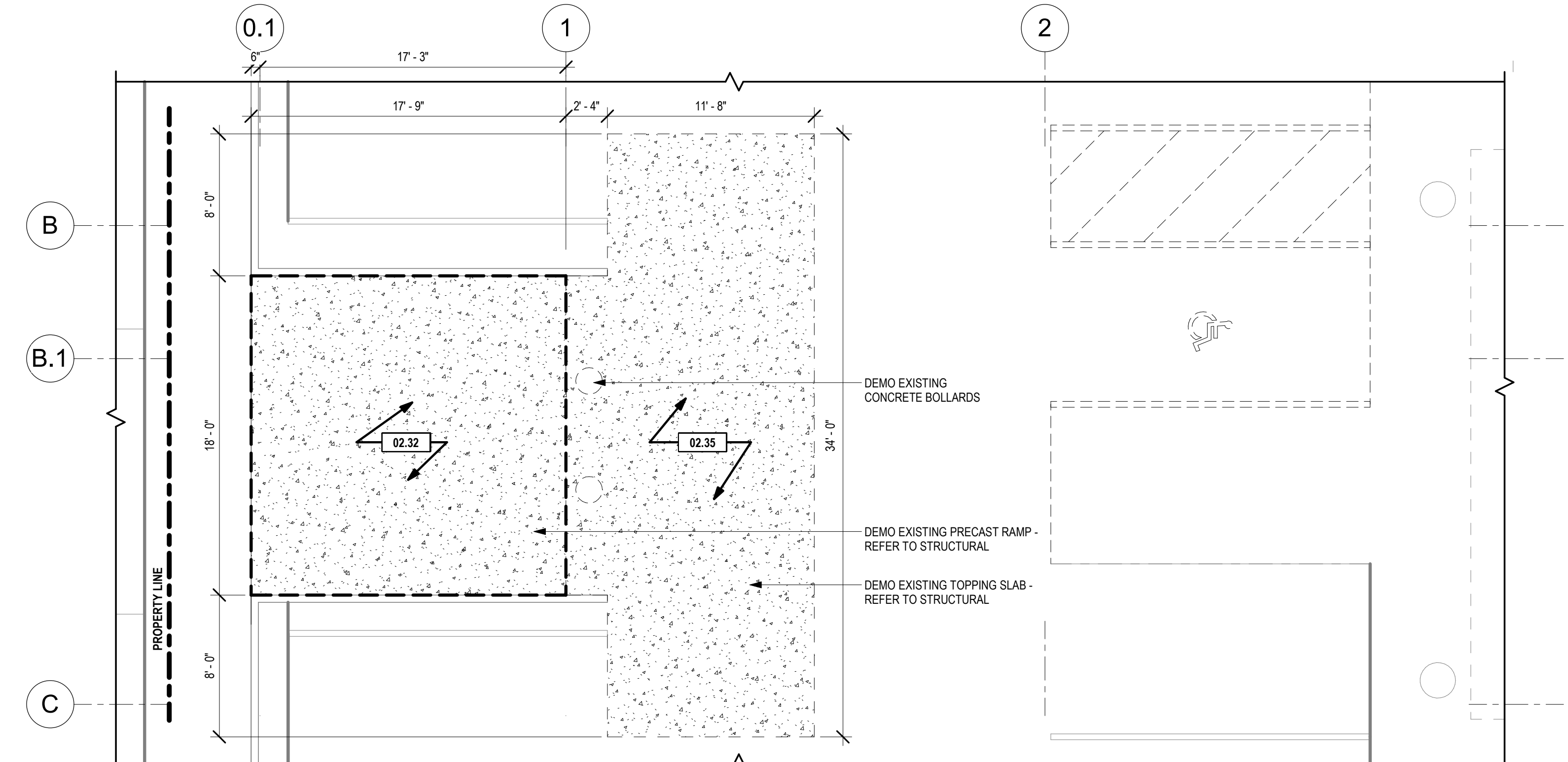
**ADA ENTRANCE RAMP - NEW WORK**  
3/16" = 1'-0"



**ENTRANCE RAMP - PLANTER SURFACE**  
1/4" = 1'-0"



**ADA ENTRANCE RAMP - SECTION**  
1/4" = 1'-0"



**ADA ENTRANCE RAMP - DEMOLITION**  
3/16" = 1'-0"



T 217.363.3375  
F 312.440.2303  
WWW.BAILEYEDWARD.COM

1103 SOUTH MATTIS AVE  
CHAMPAIGN, IL  
61821-4829

©2022 BAILEY EDWARD DESIGN  
DESIGN FIRM LICENSE NO. 184-001962

STRUCTURAL ENGINEER  
ENGINEERING RESOURCE ASSOCIATES  
2416 GALEN DRIVE  
CHAMPAIGN, IL 61821  
217.351.6268

DATE	TITLE
09/08/2022	ISSUED FOR BID

CHAMPAIGN COUNTY PLAZA  
PARKING GARAGE RENOVATION  
ITB#2202-007  
102 E. Main St., Urbana, IL 61801

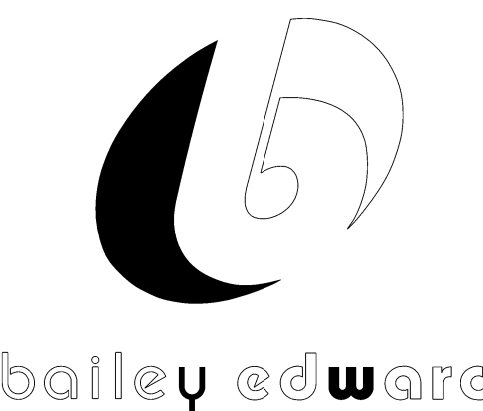
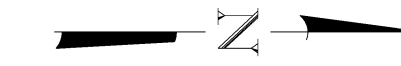
ADA PEDESTRIAN RAMP  
AND STAIR REPAIR

BE Project No. 021212	Drawn By: Author
ROBINE WITTEKURST #001-016585 REGISTERED ARCHITECT	Drawing No. AG100

BIM 360/021212 - Champaign County Plaza Renovation/021212 - CHAMPAIGN COUNTY PLAZA\_R21\_CENTRAL.rvt  
09/09/2022



S BROADWAY AVE



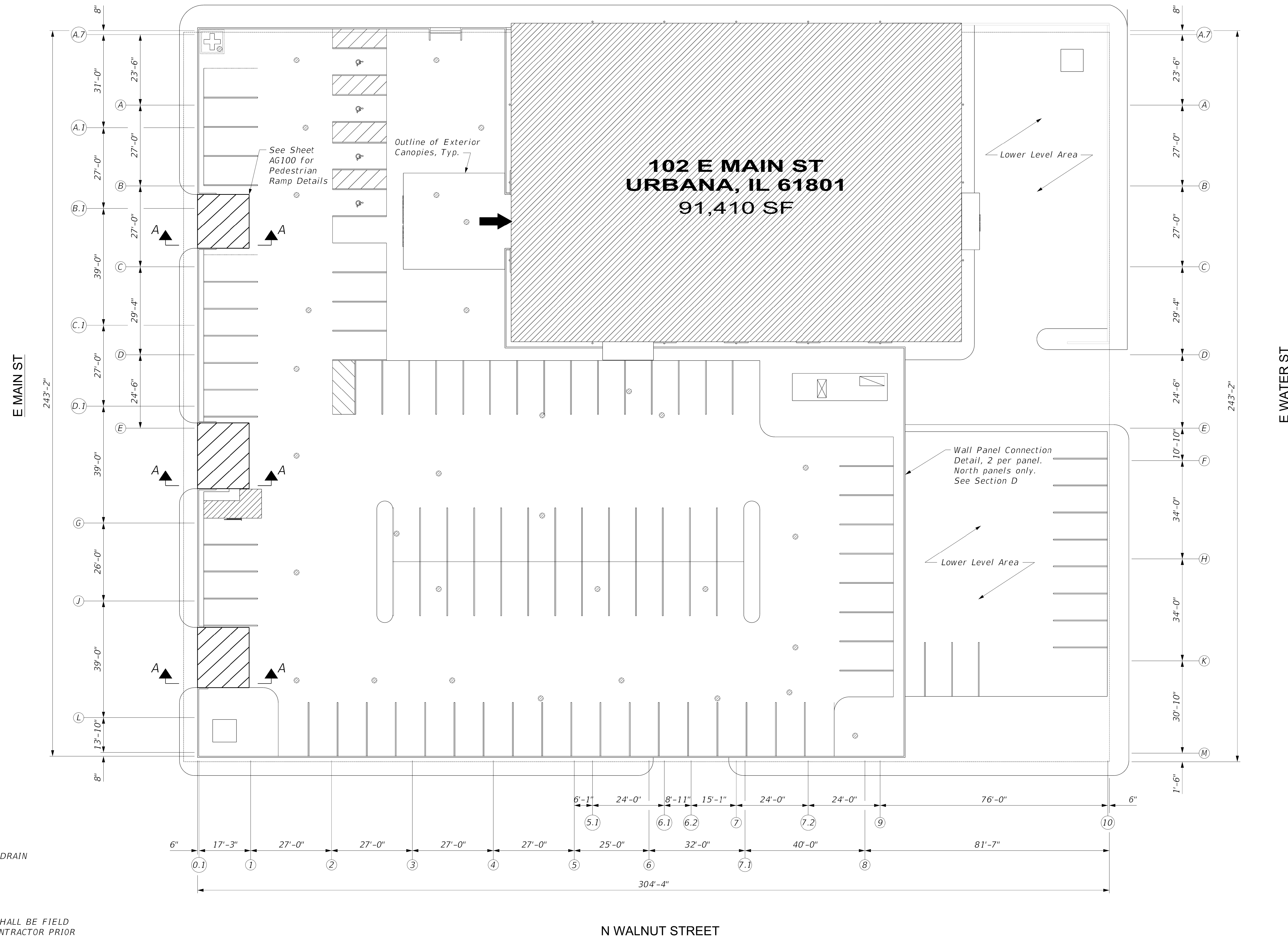
T 217.363.3375  
F 312.440.2303  
WWW.BAILEYEDWARD.COM

1103 SOUTH MATTIS AVE  
CHAMPAIGN, IL  
61821-4829

©2022 BAILEY EDWARD DESIGN  
DESIGN FIRM LICENSE NO. 184-001962

MEP ENGINEER  
GHR ENGINEERS & ASSOCIATES  
1615 SOUTH NEIL STREET  
CHAMPAIGN, IL 61820  
217.356.0536

STRUCTURAL ENGINEER  
ENGINEERING RESOURCE ASSOCIATES  
2416 GALEN DRIVE  
CHAMPAIGN, IL 61821  
217.351.6268



**LEGEND**

EXISTING FLOOR DRAIN

**NOTES**

1. ALL DIMENSIONS SHALL BE FIELD VERIFIED BY THE CONTRACTOR PRIOR TO FABRICATION
2. REMOVE AND RE-ROUTE PIPING AS NECESSARY
3. NEW STEEL AND HARDWARE TO BE GALVANIZED

**UPPER LEVEL SITE PLAN**

SCALE: 1/16" = 1'-0"

DATE	DRAWING SET TITLE
09/08/2022	ISSUED FOR BID

CHAMPAIGN COUNTY PLAZA  
PARKING GARAGE RENOVATION

ITB#2022-007

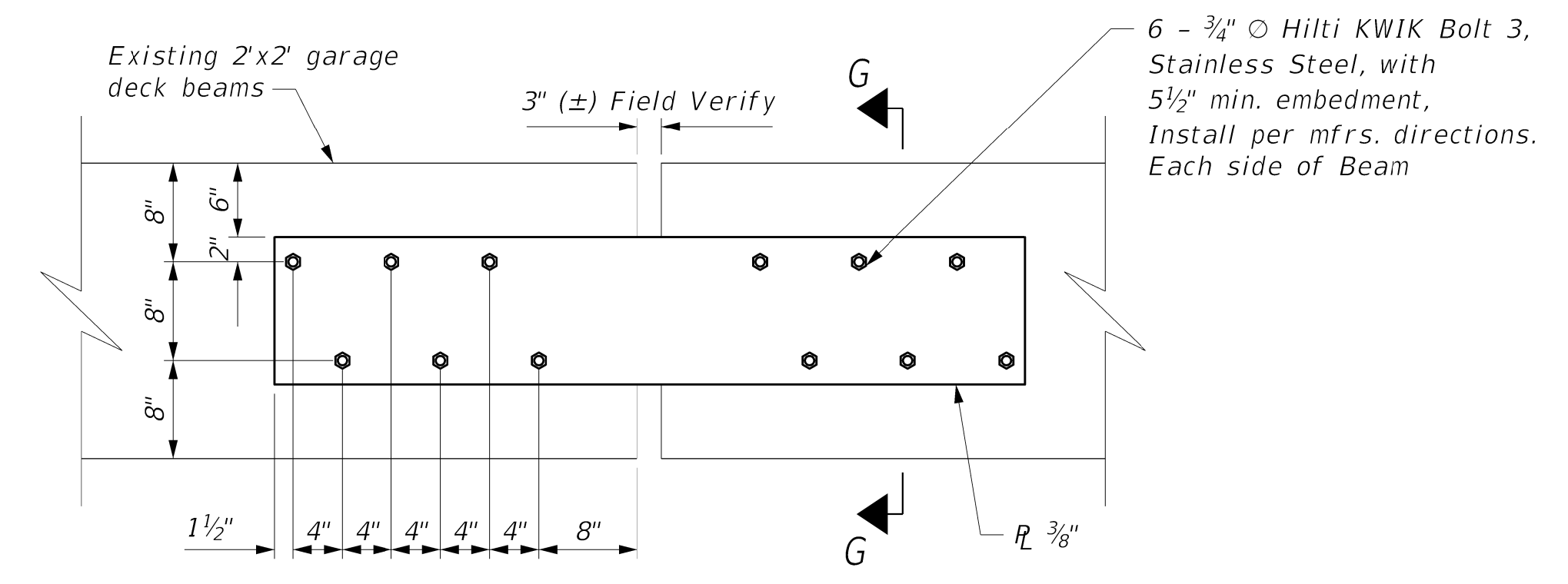
102 E. Main St., Urbana, IL 61801

UPPER LEVEL  
SITE PLAN

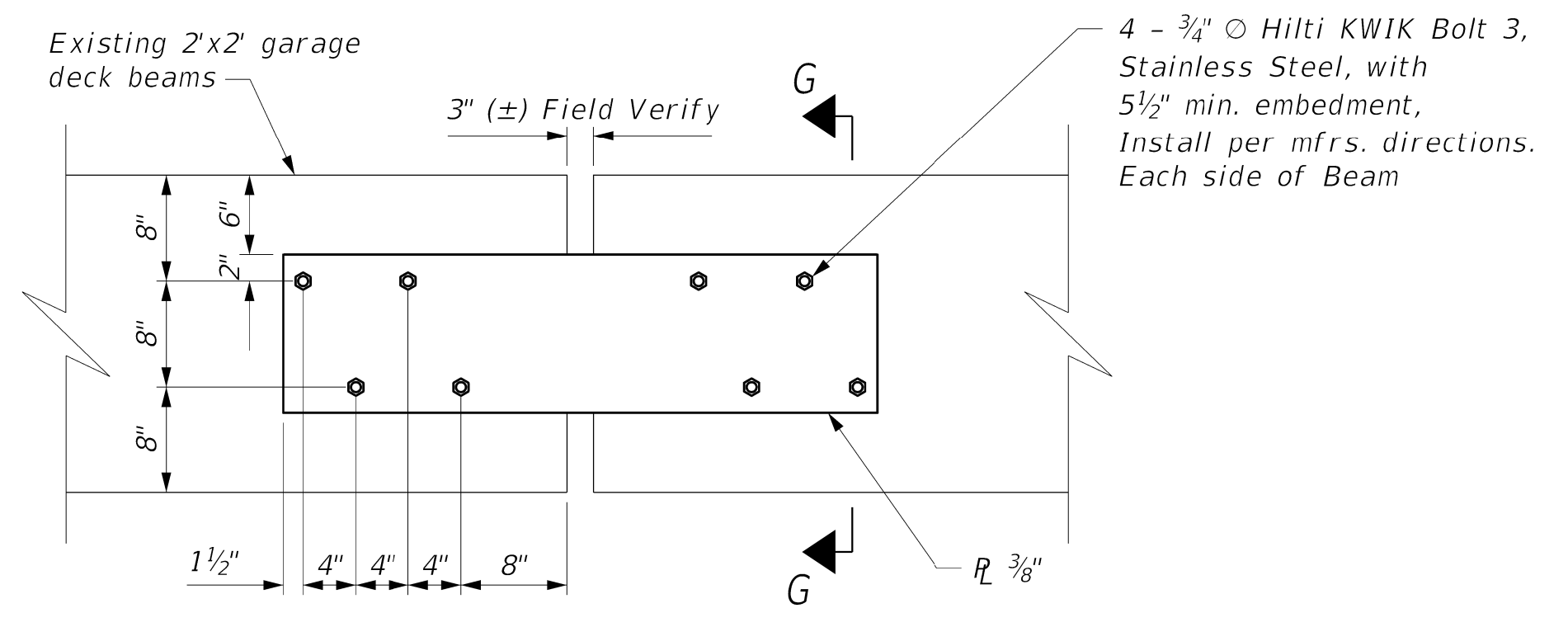
	Drawn By: EMM
	Drawing No: SG100



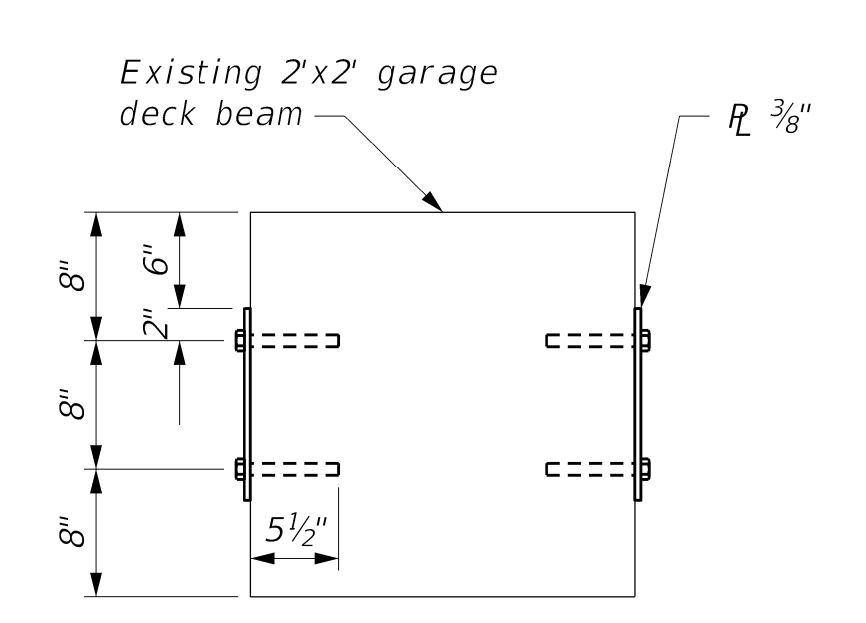




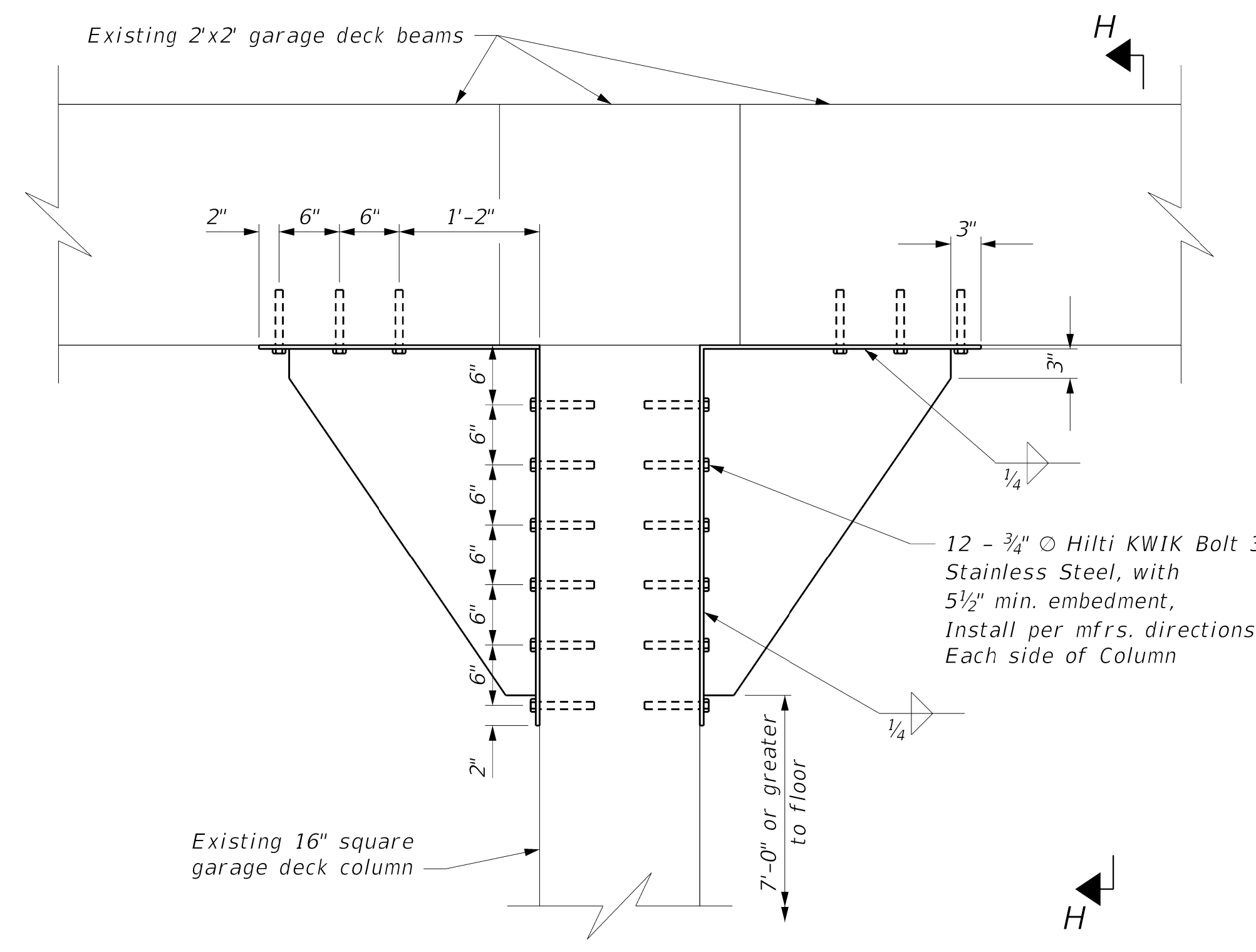
**SC1** SHEAR CONNECTION 1  
SCALE: 1" = 1'-0"



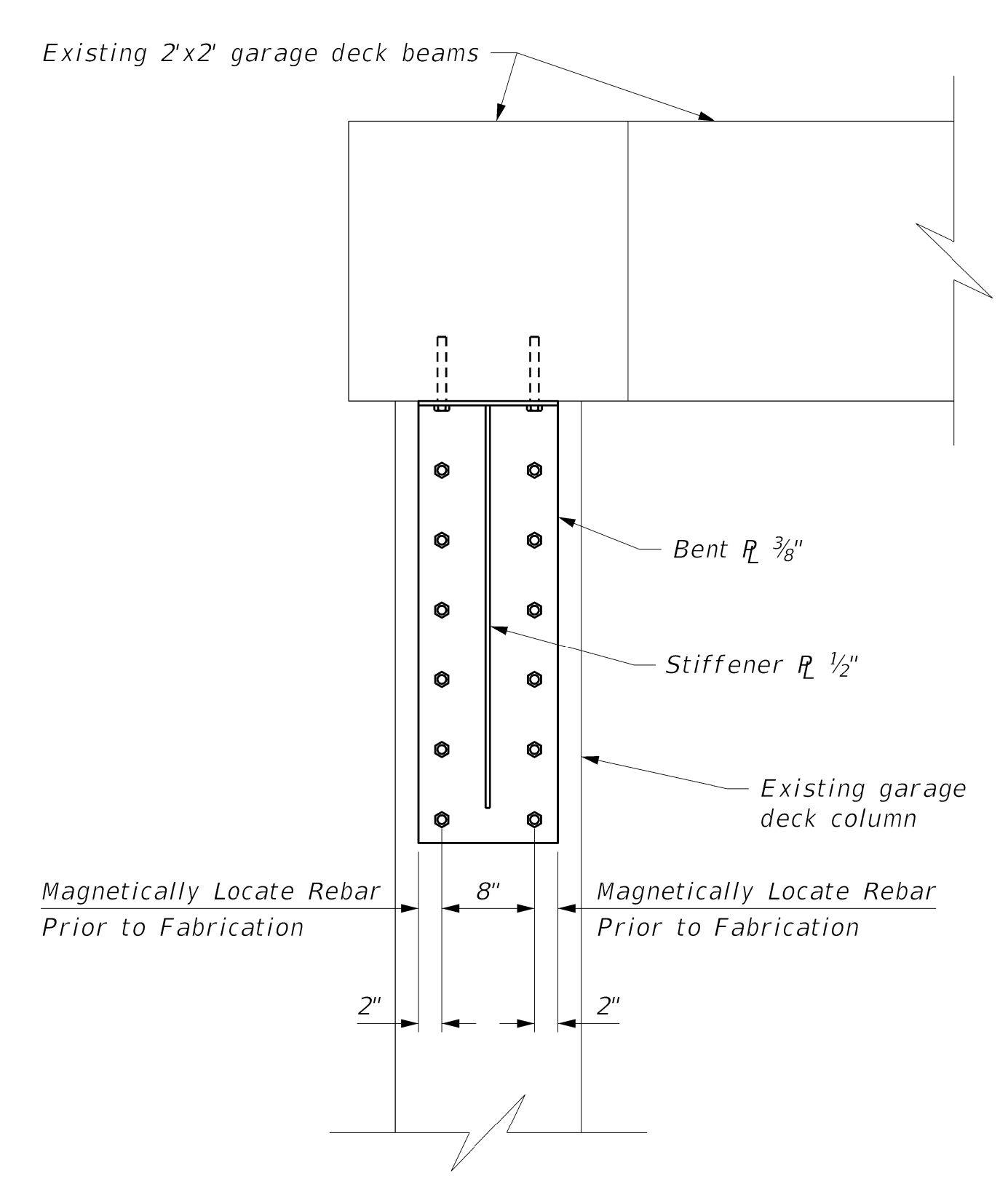
**SC2** SHEAR CONNECTION 2  
SCALE: 1" = 1'-0"



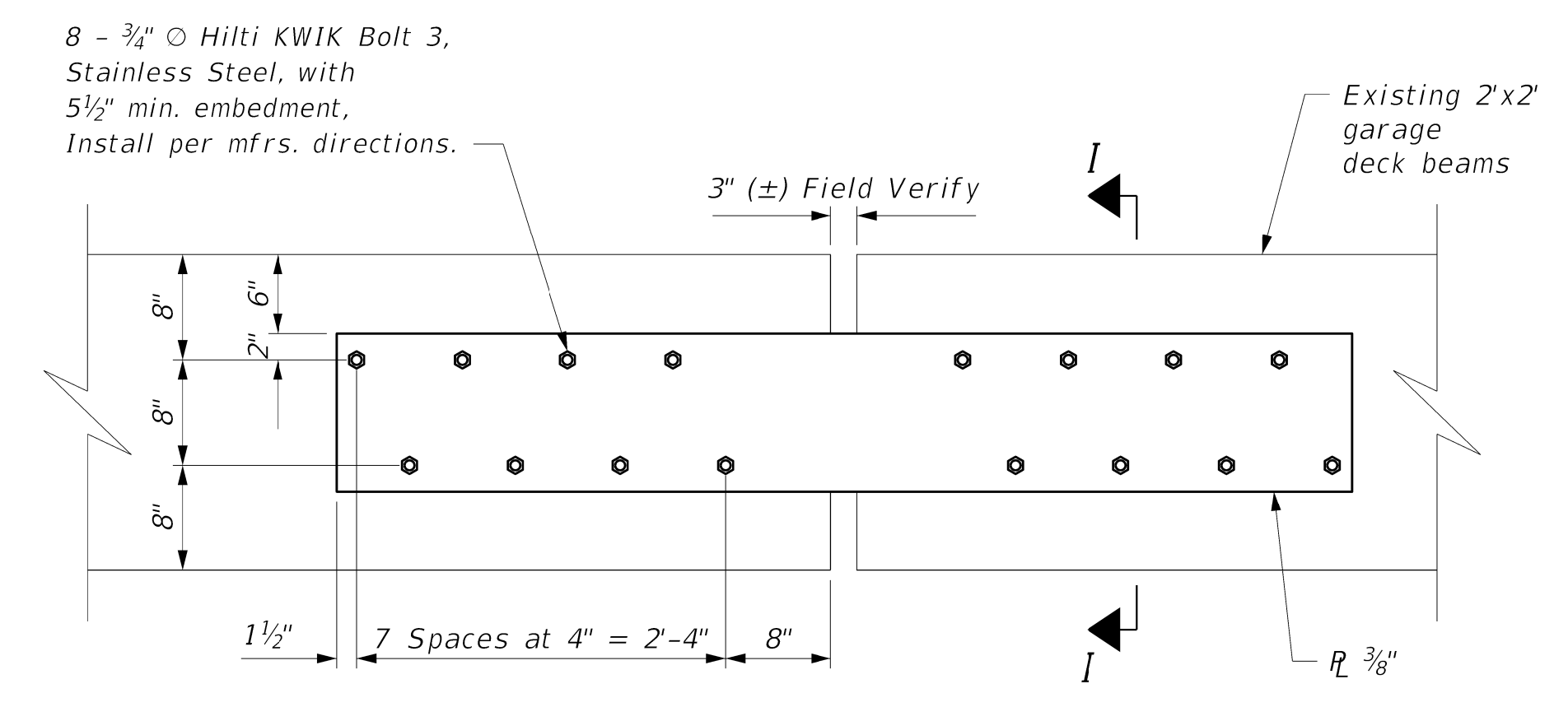
**SECTION G-G**  
SCALE: 1" = 1'-0"



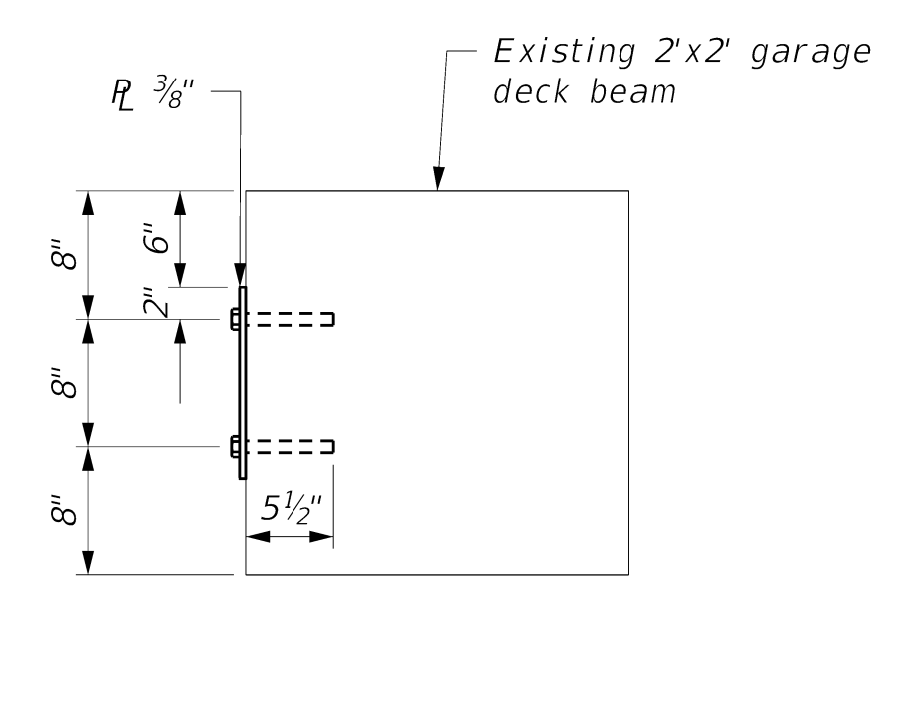
**SD3** SHEAR CONNECTION 3  
SCALE: 1" = 1'-0"



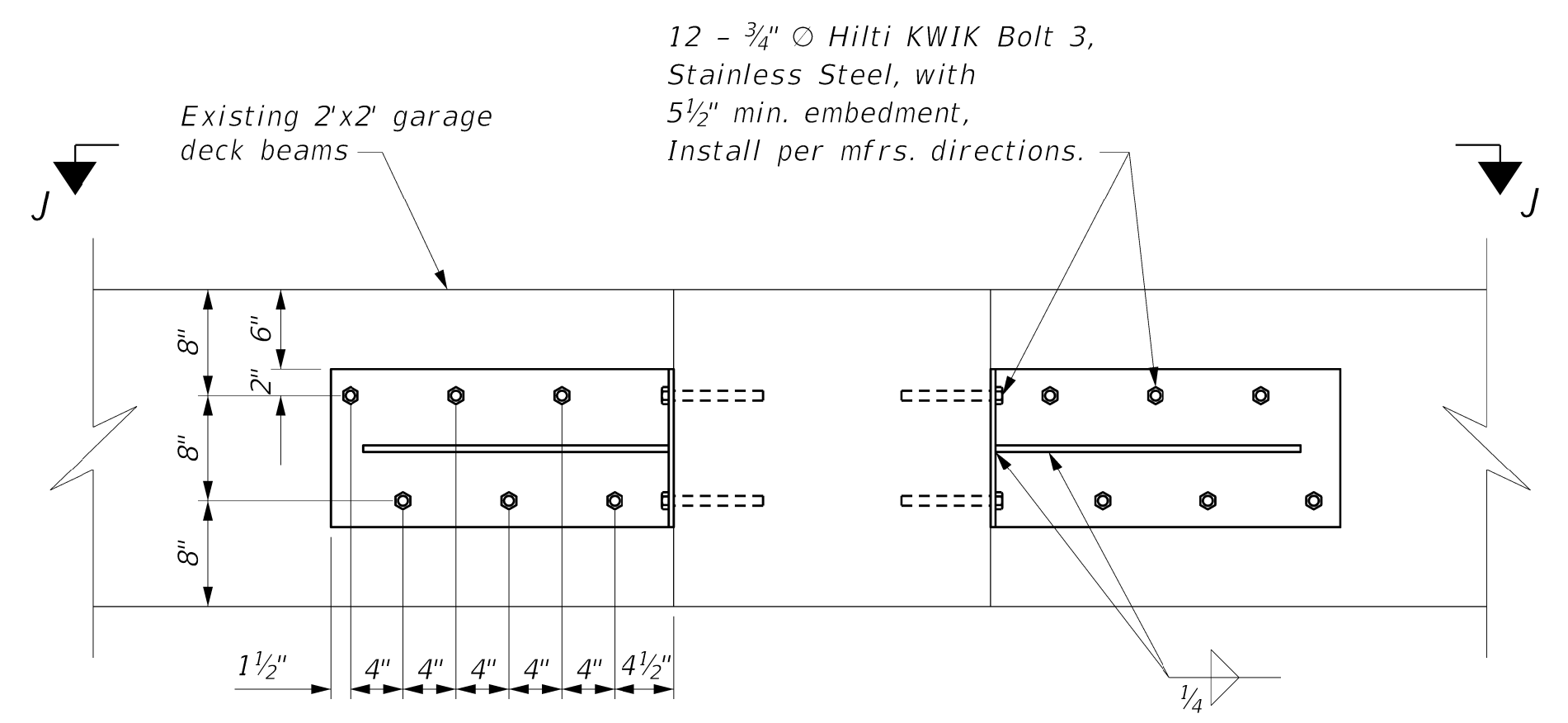
**SECTION H-H**  
SCALE: 1" = 1'-0"



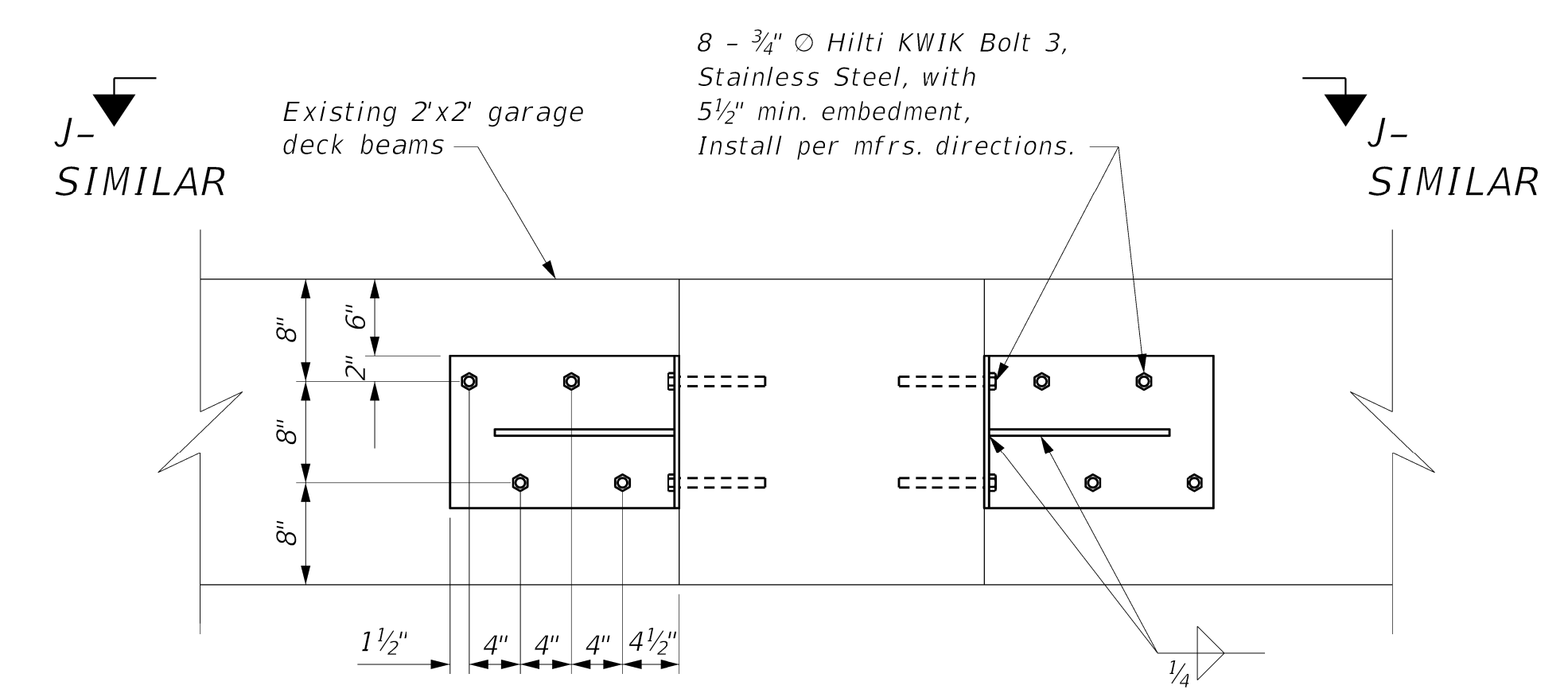
**SC4** SHEAR CONNECTION 4  
SCALE: 1" = 1'-0"  
NOTE: Remove and re-route piping as necessary



**SECTION I-I**  
SCALE: 1" = 1'-0"



**SC5** SHEAR CONNECTION 5  
SCALE: 1" = 1'-0"



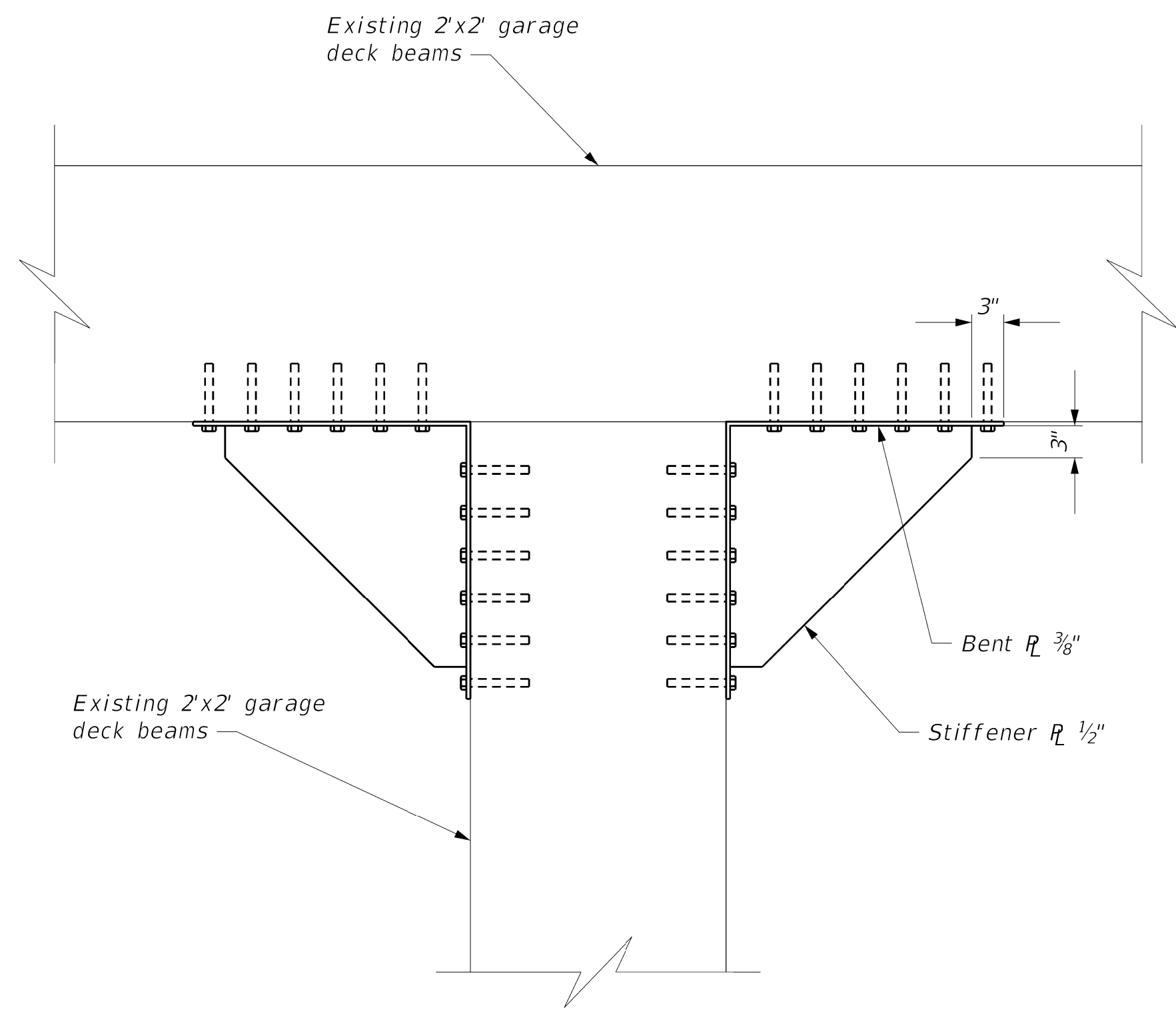
**SC6** SHEAR CONNECTION 6  
SCALE: 1" = 1'-0"

DATE	DRAWING SET TITLE
09/08/2022	ISSUED FOR BID

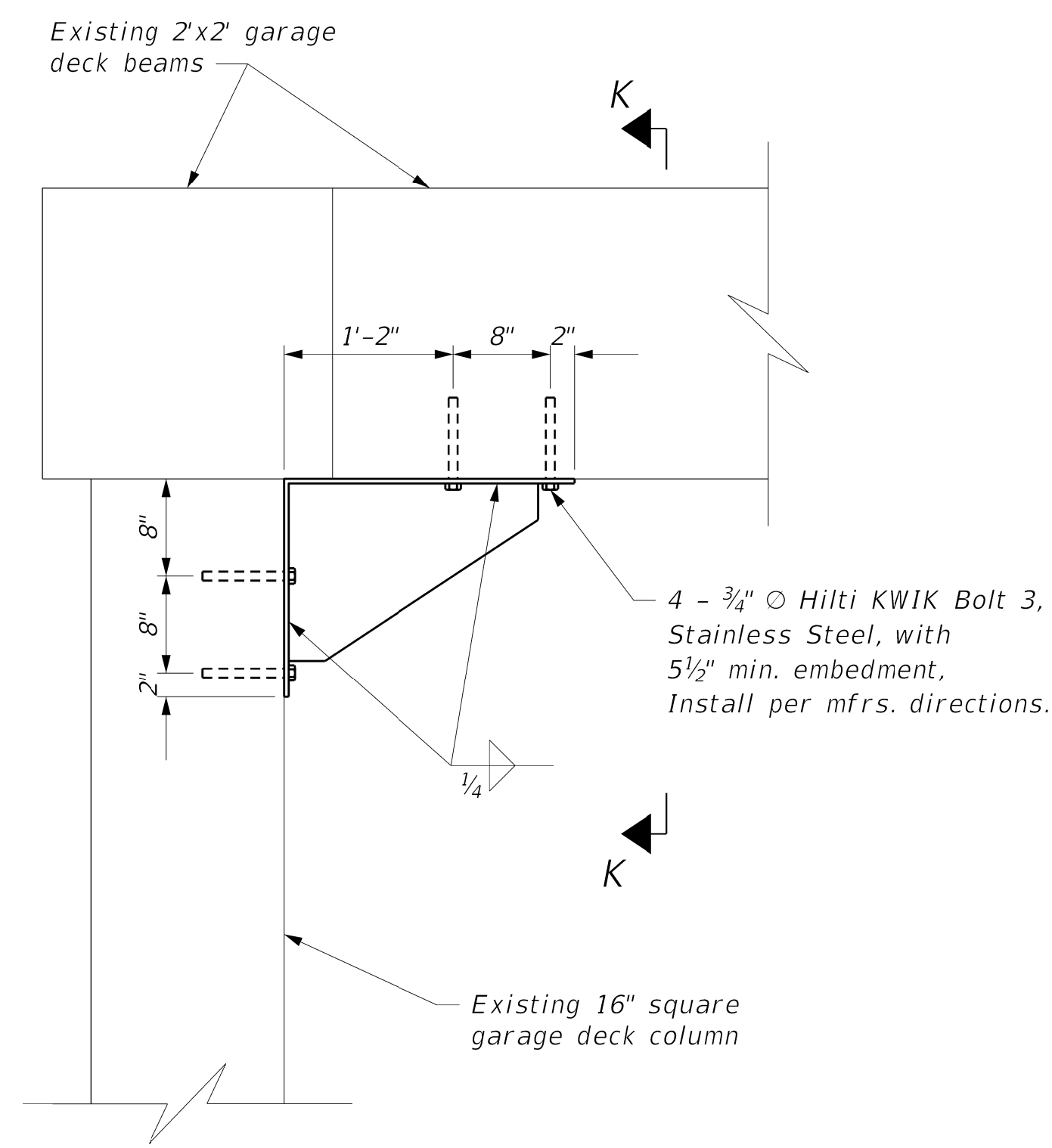
CHAMPAIGN COUNTY PLAZA  
PARKING GARAGE RENOVATION  
ITB#2022-007  
102 E. Main St., Urbana, IL 61801

DETAILS

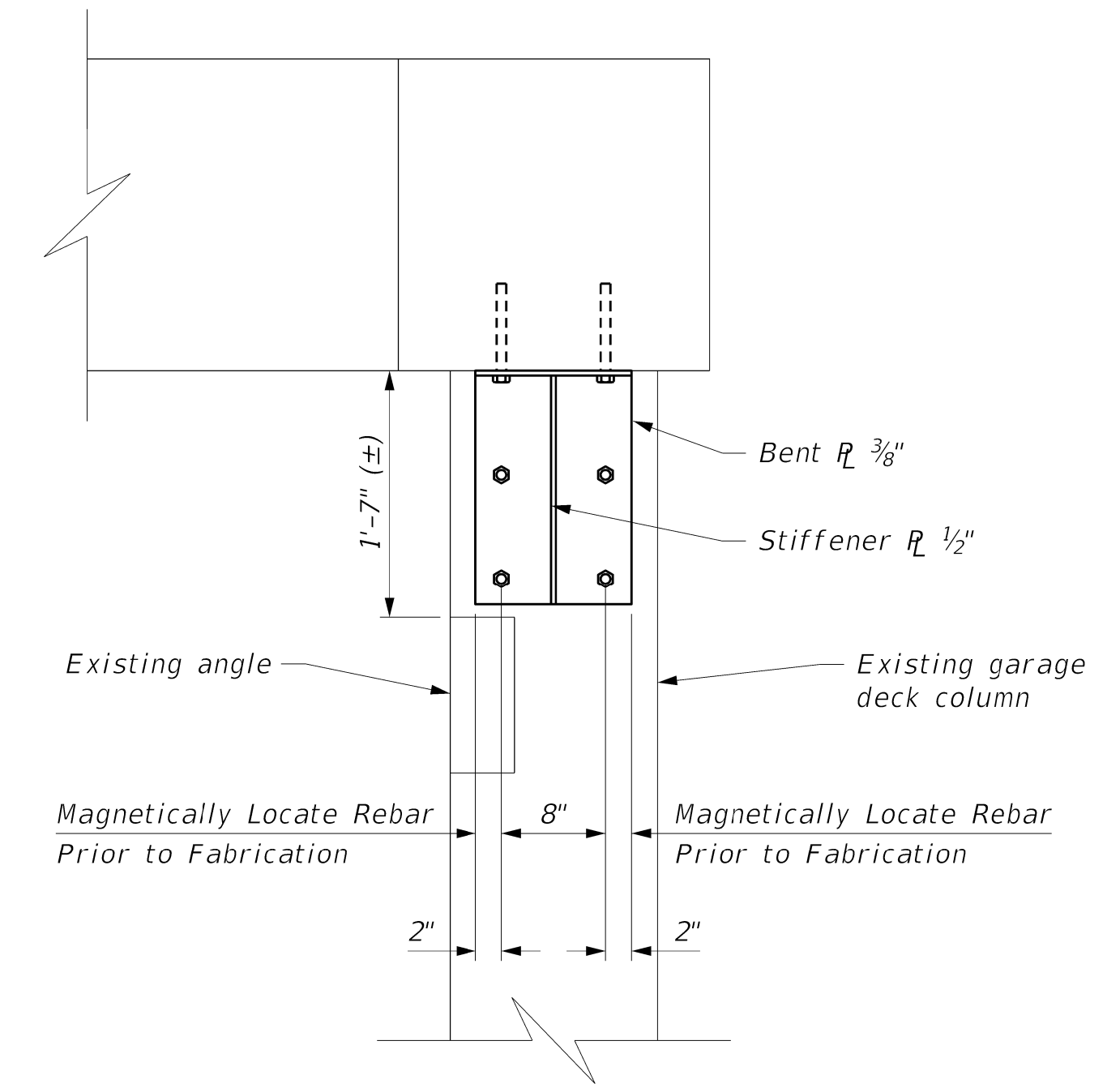
Drawn By:	EMW
Drawing No:	SG201



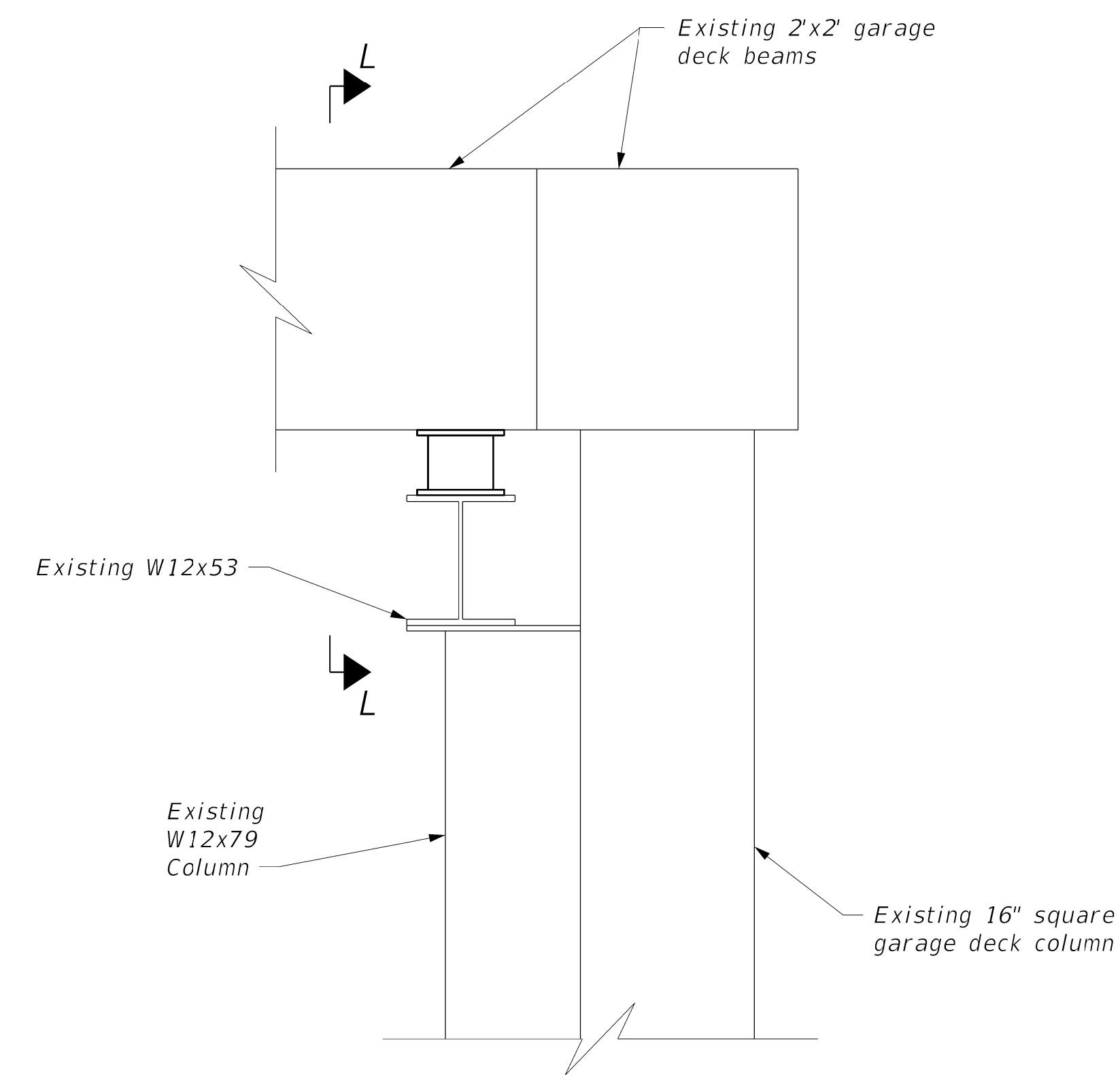
**SECTION J-J**  
**PLAN VIEW**  
 SCALE: 1" = 1'-0"



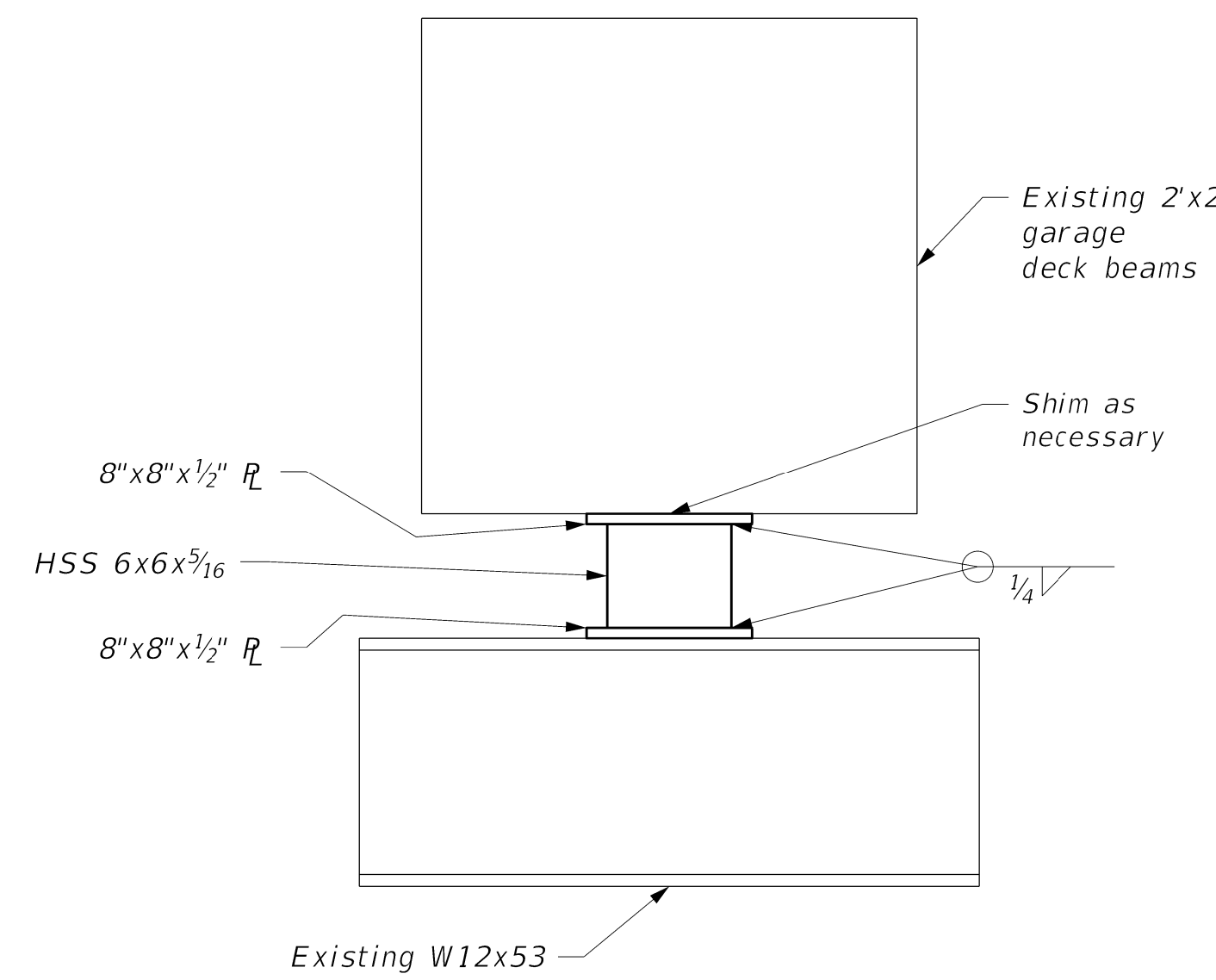
**SC7** - **SHEAR CONNECTION 7**  
 SCALE: 1" = 1'-0"



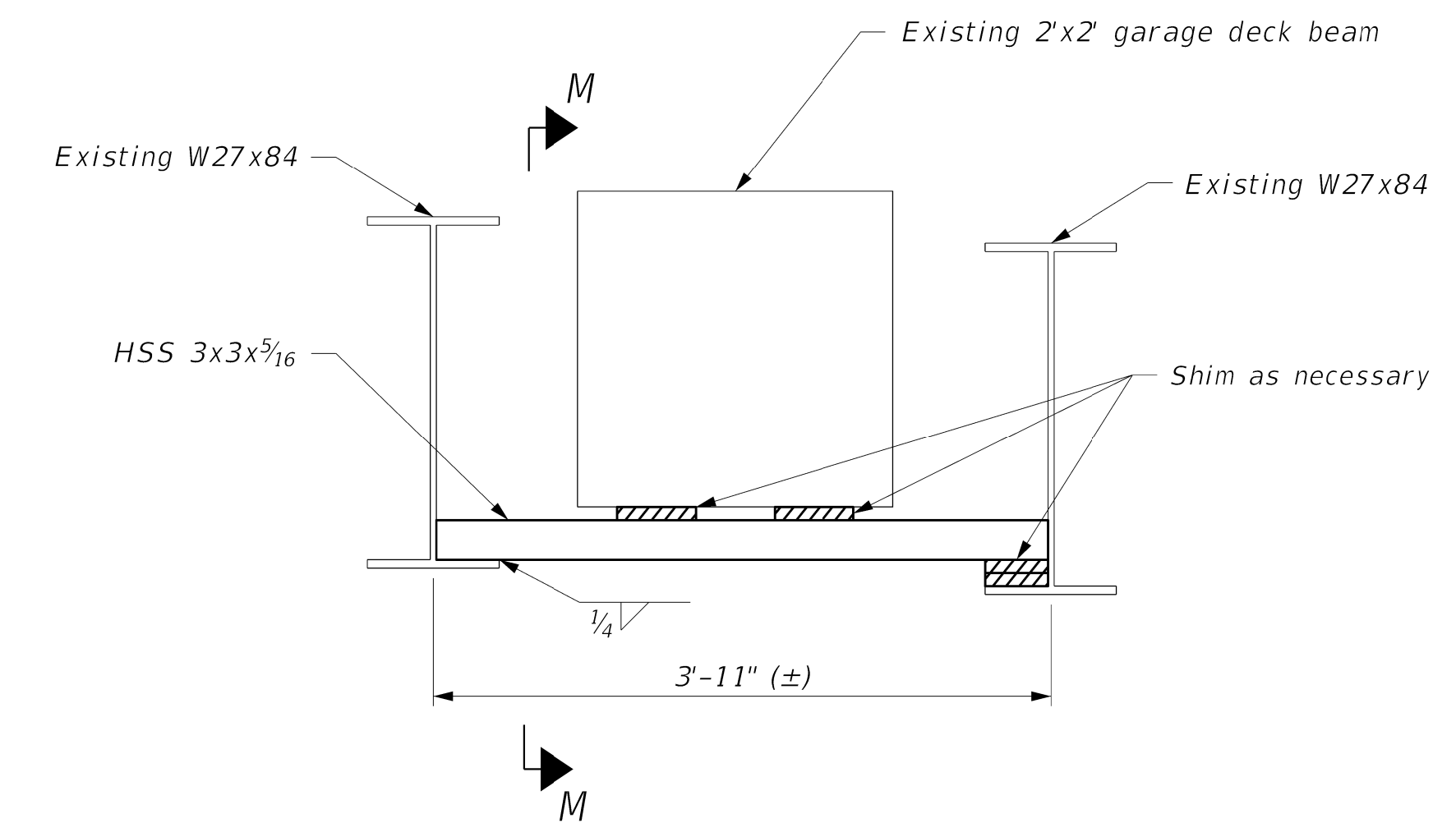
**SECTION K-K**  
 SCALE: 1" = 1'-0"



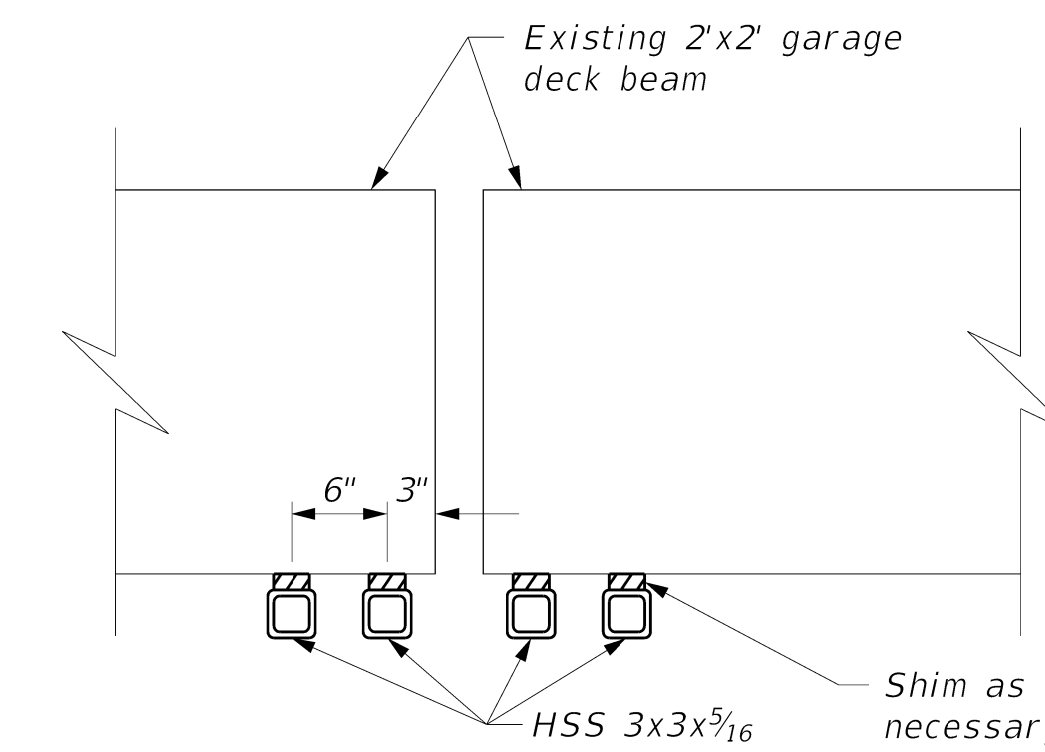
**SC8** - **SHEAR CONNECTION 8**  
 SCALE: 1" = 1'-0"



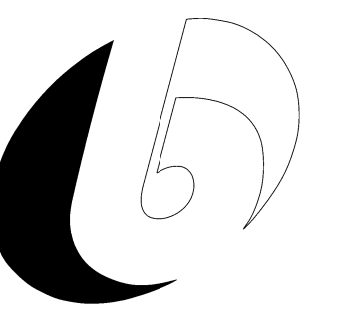
**SECTION L-L**  
 SCALE: 1 1/2" = 1'-0"



**SC9** - **SHEAR CONNECTION 9**  
 SCALE: 1" = 1'-0"



**SECTION M-M**  
 SCALE: 1" = 1'-0"



bailey edward

T 217.363.3375  
 F 312.440.2303  
 WWW.BAILEYEDWARD.COM

1103 SOUTH MATTIS AVE  
 CHAMPAIGN, IL  
 61821-4829

©2022 BAILEY EDWARD DESIGN  
 DESIGN FIRM LICENSE NO. 184-001962

MEP ENGINEER  
**GHR ENGINEERS & ASSOCIATES**  
 1615 SOUTH NEIL STREET  
 CHAMPAIGN, IL 61820  
 217.356.0536

STRUCTURAL ENGINEER  
**ENGINEERING RESOURCE ASSOCIATES**  
 2416 GALEN DRIVE  
 CHAMPAIGN, IL 61821  
 217.351.6268

Issue Date	Title
09/08/2022	DRAWING SET TITLE ISSUED FOR BID

CHAMPAIGN COUNTY PLAZA  
 PARKING GARAGE RENOVATION

ITB#2022-007

102 E. Main St., Urbana, IL 61801

DETAILS

Drawn By: EMM  
 Drawing No: SG202