



**REIFSTECK  
WAKEFIELD  
FANNING**

BIDDING AND CONTRACT DOCUMENTS

Document 00090 - Addendum #1

Champaign Co Jail Roof Replacement  
502 S. Lierman Ave  
Urbana, IL 61802

RRCo Project Number: 202511

DATE 06.05.25

Reifsteck Wakefield Fanning & Company  
909 Arrow Road  
Champaign, Illinois 61821

Subject: **ADDENDUM NO. 1 TO THE CONTRACT DOCUMENTS FOR**

**Project:** Champaign Co Jail Roof Replacement

This Addendum forms a part of the contract and contract documents and modifies the original contract documents dated 05.22.25. Acknowledge receipt of this addendum in writing to the Architect.

**Amendments to the Drawings**

**Item 1** Sheet AD300

- A. Image 11 – **REVISE** note to read “SALVAGE "LOOSE" EXHAUST HOOD AND TRUN OVER TO OWNER IF REQUESTED OTHERWISE DISPOSE OF”
- B. Image 31 – **REVISE** note to read “REMOVE & DISPOSE OF EXISTING METAL COVERS AND CURBS”
- C. **ADD** Images 33 and 34 with associated notes to the sheet.

**Item 2** Sheet AD301

- A. Mechanical curbs at East area of Roof B-1: **REVISE** note to read “REMOVE & DISPOSE OF CURB, FLASHING, & METAL COVER. REF IMAGES 31,33, AND 34.

Champaign Co Jail Roof Replacement

00090 -1

RWF & Co.  
ADDENDUM



# REIFSTECK WAKEFIELD FANNING

- B. ROOF "A" – Northeast Corner: Exhaust hood **ADD** note to read "REMOVE & SALVAGE EXHAUST FAN UNIT PLACED ON ROOF TO OWNER"

## Item 3 Sheet AD302

- A. Mechanical curbs at East area of Roof B-1: **REVISE** note to read "REMOVE & DISPOSE OF CURB, FLASHING, & METAL COVER. REF IMAGES 31,33, AND 34.

## Item 4 Sheet A301

- A. Boundary of removed mechanical curbs at East area of Roof B-1: **REVISE** to dashed lines, **ADD** note to read "INFILL INSULATION @ DEMOLISHED CURB & CAP. REF IMAGES 33&34", **DELETE** reference tag 2/A305.
- B. ROOF "A" – Northeast Corner: **DELETE** exhaust hood.

## Item 5 Sheet A302

- A. Boundary of removed mechanical curbs at East area of Roof B-1: **REVISE** to dashed lines, **ADD** note to read "INFILL INSULATION @ DEMOLISHED CURB & CAP. REF IMAGES 33&34", **DELETE** reference tag 2/A305.

## Item 6 Sheet A305

- A. **DELETE** Detail 2/A305 from sheet.

## Item 7 Sheet MEP-301 – ROOF PLAN – NORTH – MECHANICAL

- A. **REVISE** Keynote #8 to read "REMOVE EXISTING EXHAUST FAN EF-8 FROM ROOF CURB. DISCONNECT 30/16 EXHAUST DUCT. REMOVE EXISTING ROOF CURB. REINSTALL AND RECONNECT EXHAUST FAN AFTER ROOFING COMPLETION."
- B. **REVISE** Keynote #16 to read "REMOVE EXISTING LIGHTNING PROTECTION AIR TERMINAL. REMOVE, ROLL, AND STORE ALL EXISTING LIGHTNING PROTECTION CABLING. INSTALL NEW HORIZONTAL ADHESION AIR TERMINALS IN EXISTING LOCATIONS. REINSTALL STORED CABLING USING HORIZONTAL ADHESION MOUNTS ON TOP OF NEW CAP. CONNECT TO NEW AIR TERMINALS. EXTEND WIRING AT ROOF MOUNTED EQUIPMENT TO MEET UL96A CODE REQUIREMENTS."
- C. **ADD** Keynote #19 to read "EXISTING GROUNDING DOWN LEADS TO STAY. MAINTAIN PENETRATION THROUGH NEW ROOF. RECONNECT DURING SYSTEM REINSTALLATION."
- D. ROOF "A" – Northeast Corner. **ADD** Keynotes #8 and #16 to exhaust fan.



**REIFSTECK  
WAKEFIELD  
FANNING**

- E. ROOF "A" – Northeast Corner. **DELETE** Keynotes #8 and #16 from deleted exhaust shown.

**Item 8** Sheet MEP-302 – ROOF PLAN – SOUTH – MECHANICAL

- A. **REVISE** Keynote #12 to read "REMOVE EXISTING LIGHTNING PROTECTION AIR TERMINAL. REMOVE, ROLL, AND STORE ALL EXISTING LIGHTNING PROTECTION CABLING. INSTALL NEW HORIZONTAL ADHESION AIR TERMINALS IN EXISTING LOCATIONS. REINSTALL STORED CABLING USING HORIZONTAL ADHESION MOUNTS ON TOP OF NEW CAP. CONNECT TO NEW AIR TERMINALS. EXTEND WIRING AT ROOF MOUNTED EQUIPMENT TO MEET UL96A CODE REQUIREMENTS."
- B. **ADD** Keynote #14 to read "EXISTING GROUNDING DOWN LEADS TO STAY. MAINTAIN PENETRATION THROUGH NEW ROOF. RECONNECT DURING SYSTEM REINSTALLATION."

Reifsteck Wakefield Fanning & Company

This addendum consists of 3 page(s) and 7 attachment(s).

Attachments: AD300, AD301, AD302, A301, A302, MEP301, MEP302

END 00 0901



EXISTING PHOTOS- ROOF



IMAGE 01

REMOVE & DISPOSE COPING CAP, MEMBRANE, FLASHINGS, TRIM, & FASTENERS, TYP. SEE DETAILS FOR FURTHER INFORMATION.

REMOVE & DISPOSE PITCH POCKET, MEMBRANE, FLASHINGS, TRIM, & FASTENERS, TYP. SEE DETAILS FOR FURTHER INFORMATION.



IMAGE 02

LIGHTNING PROTECTION SYSTEM, SEE MEP DWGS

REMOVE + REINSTALL ANTENNA ASSEMBLY

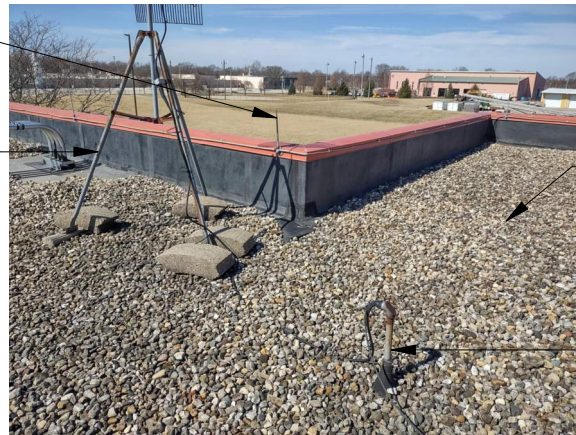


IMAGE 03

REMOVE AND DISPOSE MEMBRANE, FLASHINGS, AGGREGATE, & FASTENERS, TYP.

TYPICAL CONDUIT PENETRATION, REMOVE AND DISPOSE MEMBRANE, FLASHINGS, & FASTENERS



IMAGE 04

REMOVE AND REINSTALL ANTENNA ASSEMBLY



IMAGE 05

REMOVE & SALVAGE ELECTRICAL BOX & UNISTRUT SUPPORTS FOR REFLASHING OF CURBS



IMAGE 06



IMAGE 07

EXPANSION JOINT, REMOVE & DISPOSE MEMBRANE, FLASHINGS, TRIM, JOINT COVER, & FASTENERS, SEE DETAILS FOR FURTHER INFORMATION

REMOVE & SALVAGE 1ST METAL WALL PANEL AND TRIM MEMBER AGAINST PRECAST WALL PANEL FOR REINSTALLATION IN SAME LOCATION AFTER INSTALLATION OF EXPANSION JOINT FLASHING AGAINST PRECAST WALL PANEL

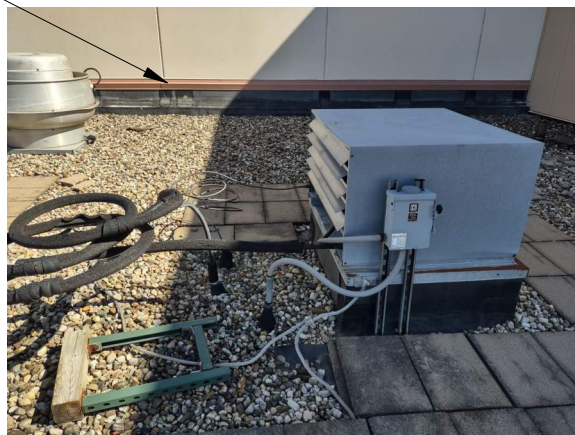


IMAGE 08

METAL WALL PANEL & BASE TRIM



IMAGE 09

EXPANSION JOINT, REMOVE & DISPOSE MEMBRANE, FLASHINGS, TRIM, JOINT COVER, & FASTENERS, SEE DETAILS FOR FURTHER INFORMATION



IMAGE 10

REMOVE & SALVAGE 1ST METAL WALL PANEL AND TRIM MEMBER AGAINST PRECAST WALL PANEL FOR REINSTALLATION IN SAME LOCATION AFTER INSTALLATION OF EXPANSION JOINT FLASHING AGAINST PRECAST WALL PANEL



IMAGE 11

SALVAGE "LOOSE" EXHAUST HOOD AND TURN OVER TO OWNER IF REQUESTED, OTHERWISE DISPOSE OF



IMAGE 12



IMAGE 13

REMOVE & SALVAGE GUTTER & DOWNSPOUT FOR RE-INSTALLATION IN SAME LOCATION, DISPOSE SPLASH PAD

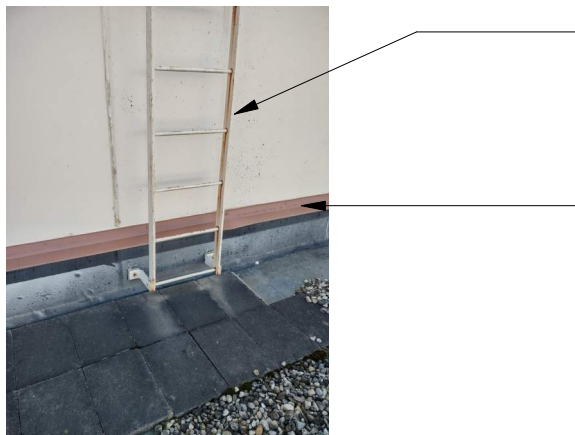


IMAGE 14

REMOVE & SALVAGE METAL LADDER W/ MULTIPLE CONNECTION POINTS FOR RE-INSTALLATION IN SAME LOCATION

REMOVE & DISPOSE MEMBRANE, FLASHINGS, TRIM, & FASTENERS, SEE DETAILS FOR FURTHER INFORMATION

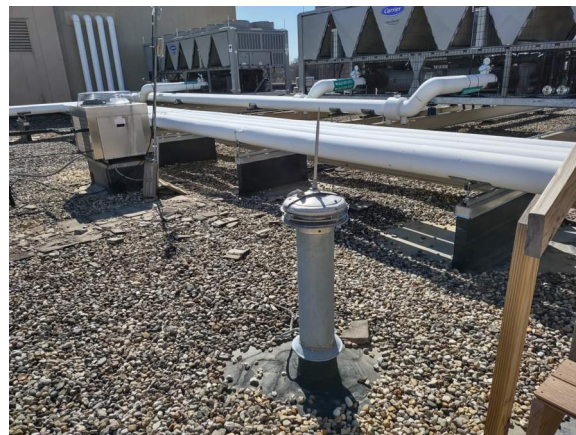


IMAGE 15



IMAGE 16

REMOVE & SALVAGE ELECTRICAL BOX & UNISTRUT SUPPORTS FOR REFLASHING OF CURBS



IMAGE 17

ROOF HATCH REMOVE AND REINSTALL TO ALLOW FOR NEW FLASHING

RTU SUPPORT FRAME TO REMAIN

TYP. REMOVE FLASHING



IMAGE 18



IMAGE 19

REMOVE & SALVAGE STAIRS FOR ROOFING INSTALLATION



IMAGE 20

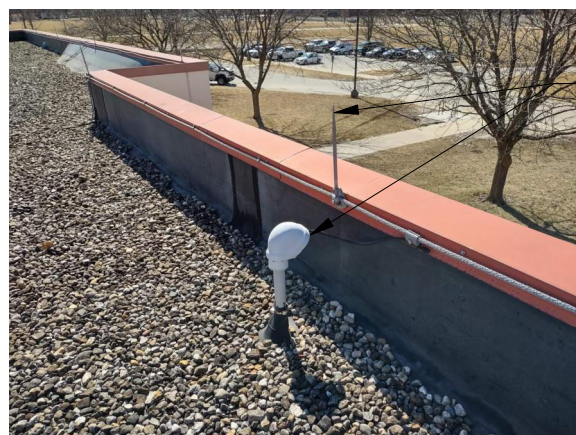


IMAGE 21

LIGHTNING PROTECTION SYSTEM, SEE MEP DWGS



IMAGE 22



IMAGE 23



IMAGE 24



IMAGE 25



IMAGE 26

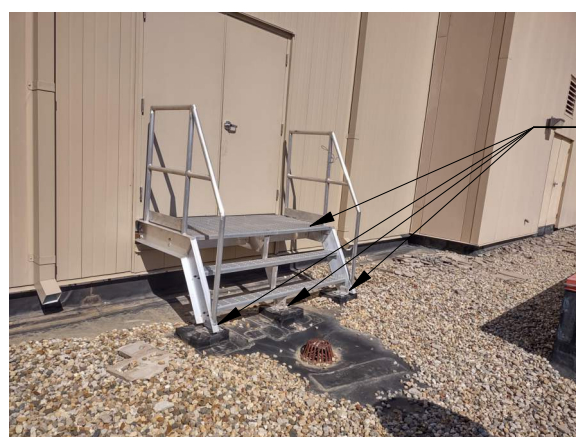


IMAGE 27

TEMPORARILY SUPPORT ALUMINUM STAIRS. REMOVE (3) SUPPORT BRACKETS TO ALLOW INSTALLATION OF MEMBRANE ROOFING.

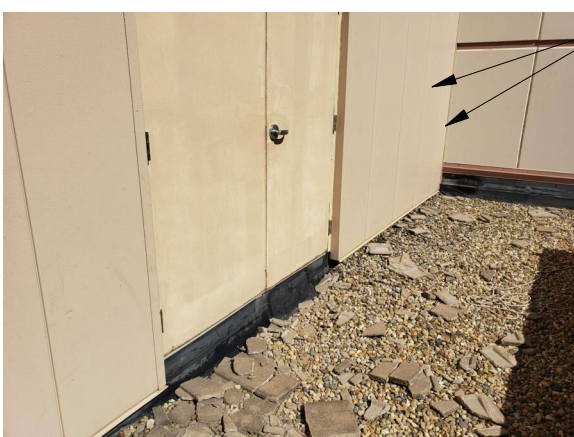


IMAGE 28

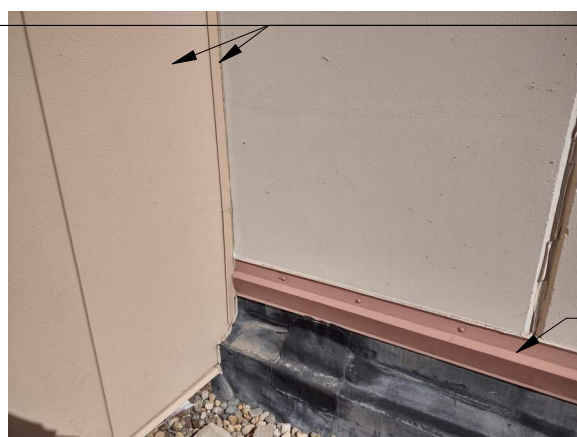


IMAGE 29

REMOVE & SALVAGE 1ST METAL WALL PANEL AND TRIM MEMBER AGAINST PRECAST WALL PANEL FOR REINSTALLATION IN SAME LOCATION AFTER INSTALLATION OF EXPANSION JOINT FLASHING AGAINST PRECAST WALL PANEL

EXPANSION JOINT, REMOVE & DISPOSE MEMBRANE, FLASHINGS, TRIM, JOINT COVER, & FASTENERS, SEE DETAILS FOR FURTHER INFORMATION



IMAGE 30

REMOVE & DISPOSE MEMBRANE, FLASHINGS, TRIM, & FASTENERS, SEE DETAILS FOR FURTHER INFORMATION

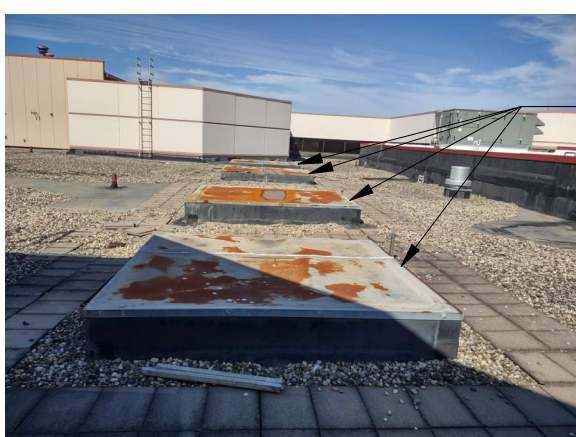


IMAGE 31

REMOVE & DISPOSE EXISTING METAL COVERS (AND CURBS)



IMAGE 32

METAL SCUPPER ASSEMBLY TO REMAIN, REMOVE & DISPOSE MEMBRANE, FLASHINGS, TRIM, & FASTENERS, SEE DETAILS FOR FURTHER INFORMATION.

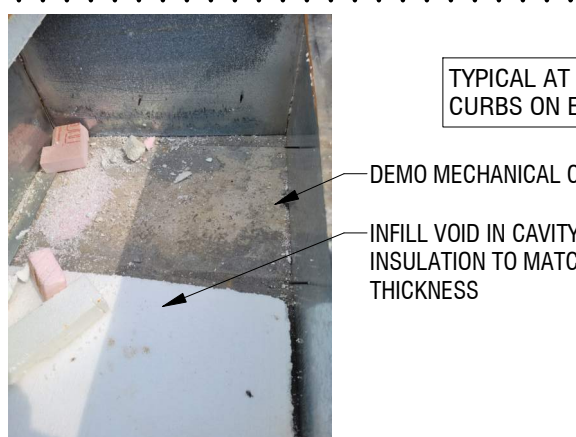


IMAGE 33

TYPICAL AT ABANDONED MECHANICAL CURBS ON EAST SIDE OF ROOF B-1

DEMO MECHANICAL CURBS

INFILL VOID IN CAVITY WITH EPS AND XPS INSULATION TO MATCH ADJACENT INSULATION THICKNESS



IMAGE 34



Reifsteck Reid & Company Architects  
d/b/a Reifsteck Wakefield Fanning & Company  
909 Arrow Road, Suite #4, Champaign, IL 61821  
217.351.4100 www.rwf-arch.com  
License Number: 194000491-001

Architect:  
Date Signed:  
License Expires: 11/30/2026

These drawings and specifications are the property and copyright of Reifsteck Wakefield Fanning & Company and shall not be used on any other work except by written agreement with the Architect.

REVISIONS

No.	Date	Description
1	6/5/2025	Addendum #1

CHAMPAIGN CO.  
JAIL ROOF  
REPLACEMENT  
502 S. Lierman Ave.  
Urbana, IL 61802

ISSUE FOR BID

EXISTING ROOF PHOTOS

DATE  
22MAY25  
PROJECT  
202511

SHEET

AD300

6/4/2025 9:15:47 AM



- DEMOLITION NOTES**
- A. DIMENSIONS ARE TO EDGE OF ROOF. CONTRACTOR TO FIELD VERIFY EXISTING CONDITIONS & DIMENSIONS SHOWN ON PLANS PRIOR TO THE START OF WORK. NOTIFY ARCHITECT OF DISCREPANCIES.
- B. DO NOT SCALE DIMENSIONS OFF DRAWINGS. USE WRITTEN OR CALCULATED DIMENSIONS, MISSING DIMENSIONS, OR DIMENSIONS NOT APPARENT SHALL BE VERIFIED WITH ARCHITECT.
- C. CONTRACTOR TO FIELD VERIFY EXISTING CONDITIONS, DIMENSIONS & ELEVATIONS SHOWN ON PLANS PRIOR TO THE START OF WORK. NOTIFY ARCHITECT OF DISCREPANCIES.
- D. CONTRACTOR TO FIELD VERIFY LOCATION, SIZES AND QUANTITIES OF ROOF PENETRATIONS AND EQUIPMENT CURBS PRIOR TO BIDDING.
- E. VERIFY & MAINTAIN LOCATION OF EXISTING POWER, COMMUNICATION & DATA CABLES TO PREVENT INTERRUPTION OF SERVICE.
- F. COORDINATE DEMOLITION AND PHASING EFFORTS WITH THE ARCHITECT & OWNER'S REPRESENTATIVE. EVERY EFFORT SHALL BE MADE TO MINIMIZE DISRUPTION OF OWNER'S OPERATION AND TO PROVIDE BUILDING USER'S SAFETY.
- G. COORDINATE DISRUPTION OF UTILITY SERVICES WITH OWNER & AS SPECIFIED.
- H. MAINTAIN A SECURE AND WATERTIGHT ENCLOSURE.
- I. THE OWNER SHALL RESERVE THE RIGHT TO SALVAGE ANY MATERIALS.
- J. PROVIDE PROTECTION FOR EXISTING BUILDING MATERIALS & EQUIPMENT FROM DAMAGE DUE TO DEMOLITION OR CONSTRUCTION-RELATED INCIDENT PERFORMED UNDER THIS CONTRACT.
- K. REPAIR OR REPLACE ITEMS DAMAGED AS A RESULT OF CONSTRUCTION TO MATCH EXISTING FINISH AND/OR CONDITION.
- L. PATCH ROOF PENETRATIONS RESULTING FROM REMOVAL OR RE-ROUTING OF NEW OR EXISTING PIPING, DUCTWORK, CONDUIT, ETC AS REQUIRED TO MAINTAIN A WEATHER-TIGHT EXTERIOR ENCLOSURE. MATCH FINISH OF NEW OR EXISTING ADJACENT SURFACES.
- M. EXISTING MATERIALS SHALL NOT BE REUSED UNLESS OTHERWISE NOTED, OR AS AUTHORIZED BY ARCHITECT.
- N. CUT AND REMOVE ALL EXISTING FLASHING MATERIALS.
- O. ANCHOR EXISTING INSULATION INTO EXISTING ROOF DECK (MTL AND PRE-CAST CONC.) ANCHORING METHOD PER MANUFACTURE GUIDELINES BASED ON DEPTH AND DECK MATERIAL.
- P. AFTER REMOVAL OF MEMBRANE AND BALLAST, CUT OUT INSULATION TO DECK TO EXPOSE CONNECTOR POINTS BETWEEN PRECAST WALL PANELS AND PLANK. RETAIN INSULATION FOR REINSTALLATION (AT CONTRACTOR OPTION TO PROVIDE NEW) AFTER STRUCTURAL REPAIR WORK. AT LOCATIONS WHERE CONNECTORS ARE NOT PRESENT INSTALL CONNECTORS PER DETAIL 5/A305.

**ROOF CORES:**

- ROOF CORE 1**  
14" TOTAL DEPTH. METAL DECK, .5" HARBORD, 11.5" EPS, 2" XPS, BALLASTED EPDM.
- ROOF CORE 2**  
10.5" TOTAL DEPTH. METAL DECK, .5" HARBORD, 8" EPS, 2" XPS, BALLASTED EPDM.
- ROOF CORE 3**  
13.25" TOTAL DEPTH. METAL DECK, .5 HARBORD, 10.75" EPS, 2" XPS, BALLASTED EPDM.
- ROOF CORE 4**  
5.5" TOTAL DEPTH. HARDENED CONCRETE DECK. 3.5" EPS, 2" XPS, BALLASTED EPDM.
- ROOF CORE 5**  
9.25" TOTAL DEPTH. HARDENED CONCRETE DECK, 7.25" EPS, 2" XPS, BALLASTED EPDM.
- ROOF CORE 6**  
9 5/8" TOTAL DEPTH. METAL DECK, 5/8" HARBORD, 7" EPS, 2" XPS, BALLASTED EPDM.
- ROOF CORE 7**  
2 5/8" TOTAL DEPTH. METAL DECK, 5/8" HARBORD, 2" XPS, BALLASTED EPDM.
- ROOF CORE 8**  
6.5" TOTAL DEPTH. HARDENED CONCRETE DECK, 4.5" EPS, 2" XPS, BALLASTED EPDM.
- ROOF CORE 9**  
3.5" TOTAL DEPTH. METAL DECK 5/8" HARBORD, 5/8" ISO BOARD, 2" ISO BOARD, BALLASTED EPDM.
- ROOF CORE 10**  
6.5" TOTAL DEPTH. METAL DECK, 5/8" HARBORD, 3 5/8" EPS, 2" ISO BOARD, BALLASTED EPDM.
- ROOF CORE 11**  
17.5" TOTAL DEPTH. METAL DECK, .5" HARBORD, 15" EPS, 2" XPS, BALLASTED EPDM.
- ROOF CORE 12**  
3.25" TOTAL DEPTH. METAL DECK, .5" HARBORD, .75" EPS, 2" XPS, BALLASTED EPDM.

**EXISTING ROOF ASSEMBLIES**

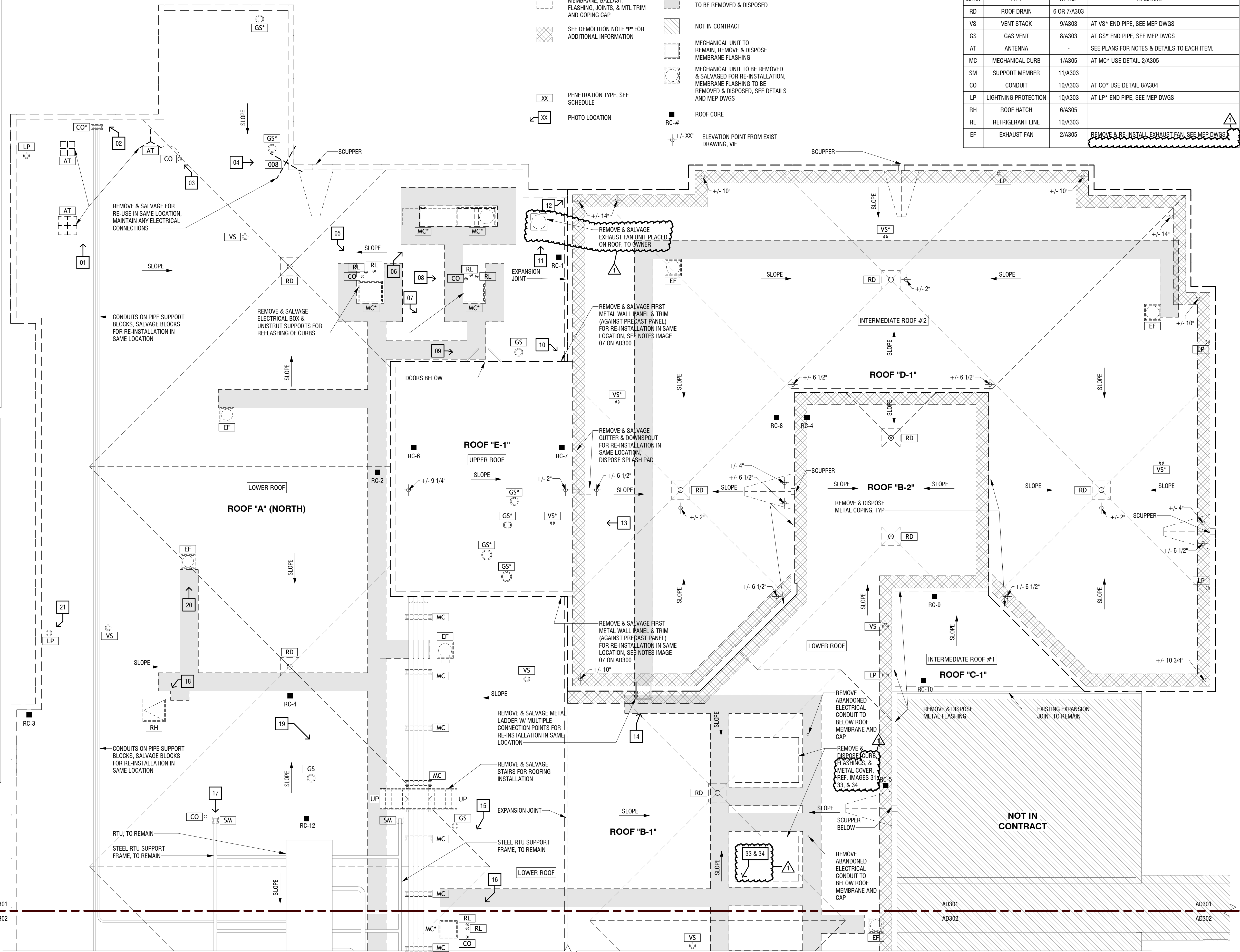
- ROOF "A"**  
METAL DECK, 1/2" HARBORD, TAPERED EPS, 2" XPS, BALLASTED EPDM.
- ROOF "B"**  
CONCRETE DECK, TAPERED EPS, 2" XPS, BALLASTED EPDM.
- ROOF "C"**  
METAL DECK, EXISTING 5/8" HARBORD, TAPERED EPS, 2" XPS, BALLASTED EPDM.
- ROOF "D"**  
CONCRETE DECK, TAPERED EPS, 2" XPS, BALLASTED EPDM.
- ROOF "E"**  
METAL DECK, 5/8" HARBORD, TAPERED EPS, 2" XPS, BALLASTED EPDM.

**ROOF DEMOLITION LEGEND**

- REMOVE & DISPOSE OF ROOF MEMBRANE, BALLAST, FLASHING, JOINTS, & MTL TRIM AND COPING CAP
- SEE DEMOLITION NOTE "P" FOR ADDITIONAL INFORMATION
- PENETRATION TYPE, SEE SCHEDULE
- PHOTO LOCATION
- CONCRETE WALKWAY PAVERS TO BE REMOVED & DISPOSED
- NOT IN CONTRACT
- MECHANICAL UNIT TO REMAIN, REMOVE & DISPOSE MEMBRANE FLASHING
- MECHANICAL UNIT TO BE REMOVED & SALVAGED FOR RE-INSTALLATION, MEMBRANE FLASHING TO BE REMOVED & DISPOSED, SEE DETAILS AND MEP DWGS
- ROOF CORE
- ELEVATION POINT FROM EXIST DRAWING, VIF

**ROOF PENETRATION TYPE SCHEDULE**

MARK	TYPE	DETAIL	REMARKS
RD	ROOF DRAIN	6 OR 7/A303	
VS	VENT STACK	9/A303	AT VS* END PIPE, SEE MEP DWGS
GS	GAS VENT	8/A303	AT GS* END PIPE, SEE MEP DWGS
AT	ANTENNA	-	SEE PLANS FOR NOTES & DETAILS TO EACH ITEM.
MC	MECHANICAL CURB	1/A305	AT MC* USE DETAIL 2/A305
SM	SUPPORT MEMBER	11/A303	
CO	CONDUIT	10/A303	AT CO* USE DETAIL 8/A304
LP	LIGHTNING PROTECTION	10/A303	AT LP* END PIPE, SEE MEP DWGS
RH	ROOF HATCH	6/A305	
RL	REFRIGERANT LINE	10/A303	
EF	EXHAUST FAN	2/A305	REMOVE & RE-INSTALL EXHAUST FAN, SEE MEP DWGS



**1**  
AD301  
ROOF PLAN  
BEARING ELEVATION  
1/8" = 1'-0"



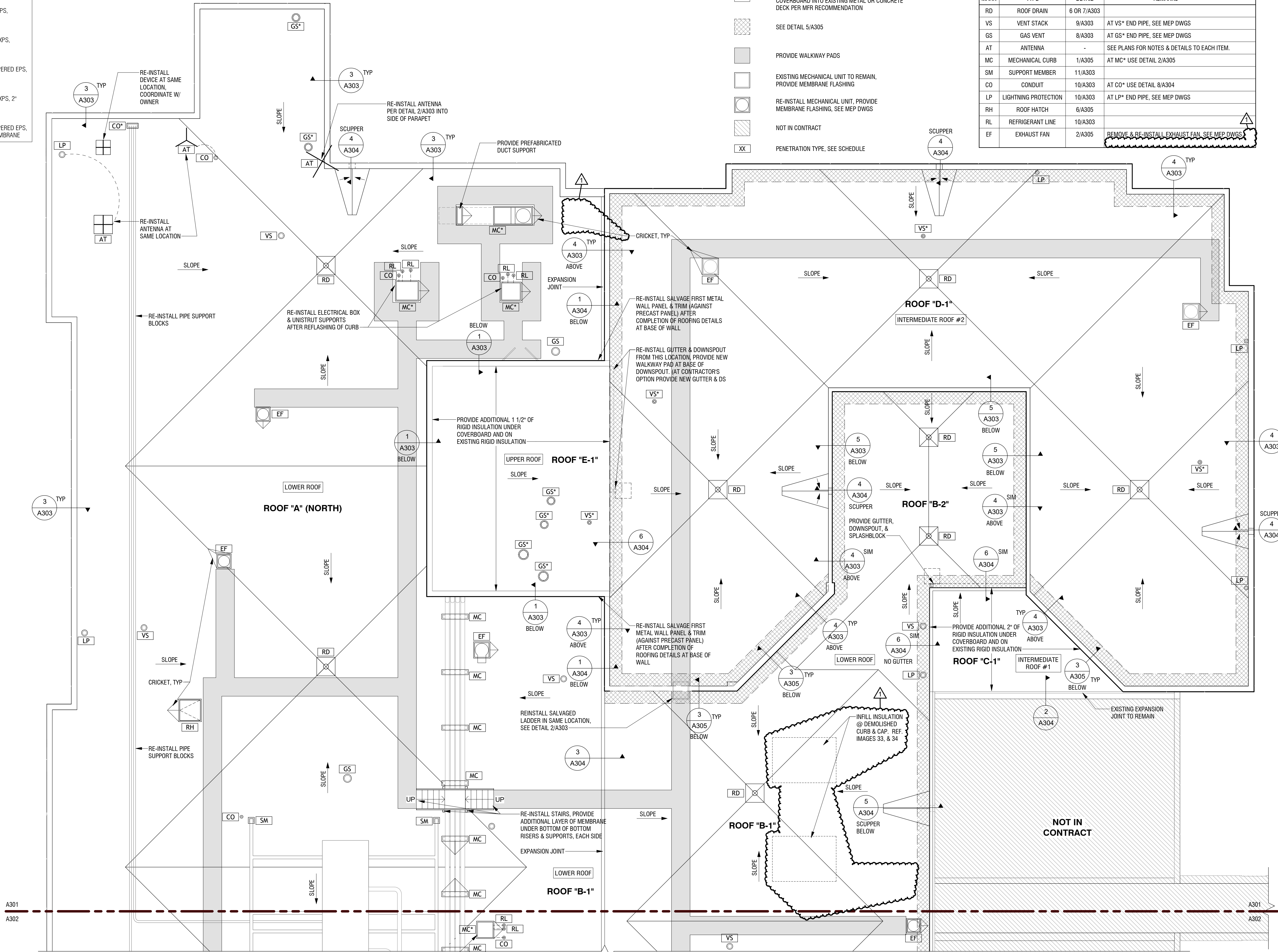




- ROOF ASSEMBLIES**
- ROOF "A"**  
METAL DECK, C 1/2" HARDBOARD, EXISTING TAPERED EPS, EXISTING 2" XPS, 1/2" COVER BOARD, TPO MEMBRANE
- ROOF "B"**  
CONCRETE DECK, EXISTING TAPERED EPS, EXISTING 2" XPS, 1/2" COVER BOARD, TPO MEMBRANE
- ROOF "C"**  
METAL DECK, EXISTING 5/8" HARDBOARD, EXISTING TAPERED EPS, EXISTING 2" XPS, 1/2" COVER BOARD, TPO MEMBRANE
- ROOF "D"**  
CONCRETE DECK, EXISTING TAPERED EPS, EXISTING 2" XPS, 2" XPS, 1/2" COVER BOARD, TPO MEMBRANE
- ROOF "E"**  
METAL DECK, EXISTING 5/8" HARDBOARD, EXISTING TAPERED EPS, EXISTING 2" XPS, 1 1/2" XPS, 1/2" COVER BOARD, TPO MEMBRANE

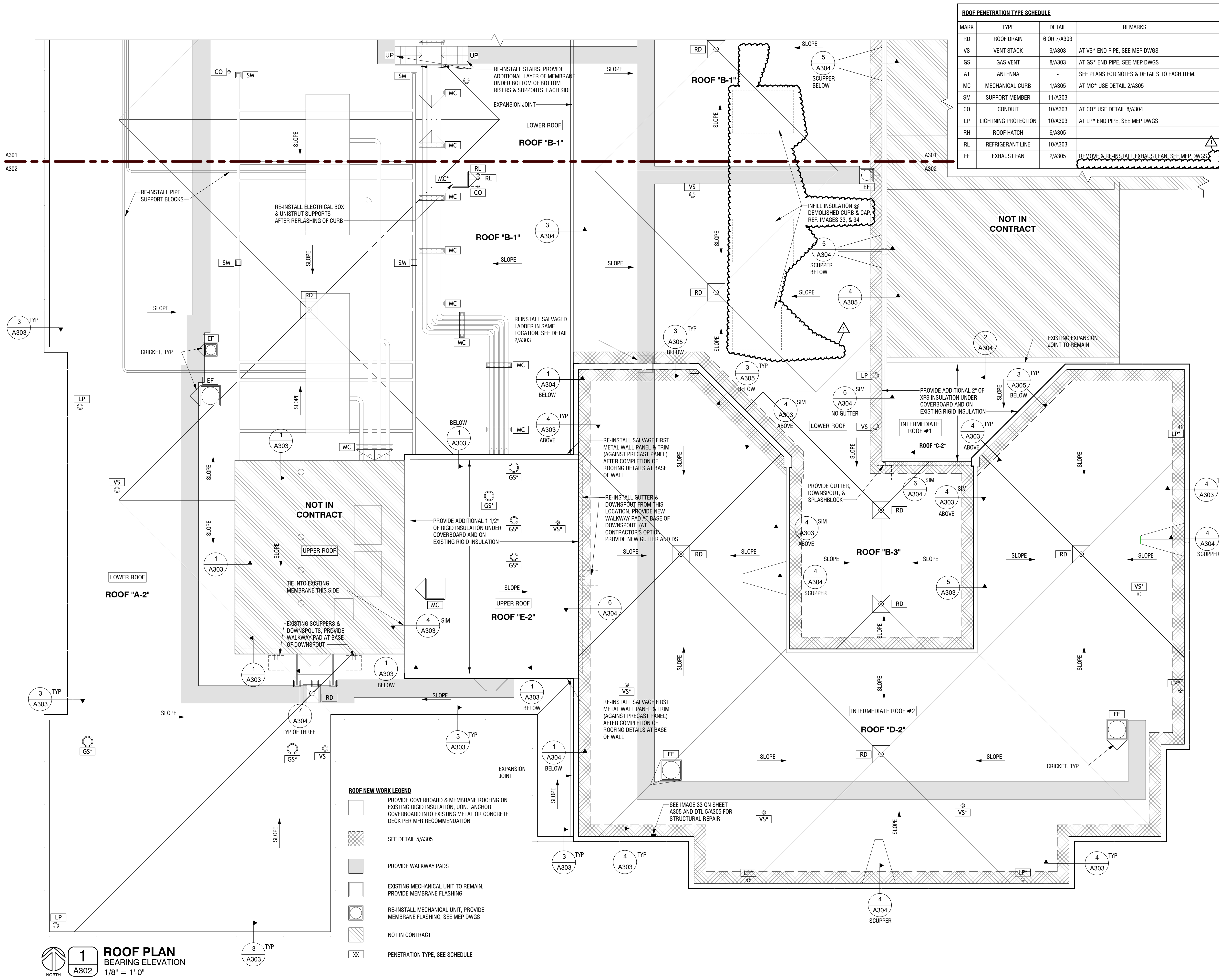
- ROOF NEW WORK LEGEND**
- PROVIDE COVERBOARD & MEMBRANE ROOFING ON EXISTING RIGID INSULATION, UON. ANCHOR COVERBOARD INTO EXISTING METAL OR CONCRETE DECK PER MFR RECOMMENDATION
  - SEE DETAIL 5/A305
  - PROVIDE WALKWAY PADS
  - EXISTING MECHANICAL UNIT TO REMAIN, PROVIDE MEMBRANE FLASHING
  - RE-INSTALL MECHANICAL UNIT, PROVIDE MEMBRANE FLASHING, SEE MEP DWGS
  - NOT IN CONTRACT
  - PENETRATION TYPE, SEE SCHEDULE

ROOF PENETRATION TYPE SCHEDULE			
MARK	TYPE	DETAIL	REMARKS
RD	ROOF DRAIN	6 OR 7/A303	
VS	VENT STACK	9/A303	AT VS* END PIPE, SEE MEP DWGS
GS	GAS VENT	8/A303	AT GS* END PIPE, SEE MEP DWGS
AT	ANTENNA	-	SEE PLANS FOR NOTES & DETAILS TO EACH ITEM.
MC	MECHANICAL CURB	1/A305	AT MC* USE DETAIL 2/A305
SM	SUPPORT MEMBER	11/A303	
CO	CONDUIT	10/A303	AT CO* USE DETAIL 8/A304
LP	LIGHTNING PROTECTION	10/A303	AT LP* END PIPE, SEE MEP DWGS
RH	ROOF HATCH	6/A305	
RL	REFRIGERANT LINE	10/A303	
EF	EXHAUST FAN	2/A305	REMOVE & RE-INSTALL EXHAUST FAN, SEE MEP DWGS



**1**  
A301  
**ROOF PLAN**  
BEARING ELEVATION  
1/8" = 1'-0"





**1**  
A302  
**ROOF PLAN**  
BEARING ELEVATION  
1/8" = 1'-0"

**REIFSTECK WAKEFIELD FANNING**  
Reifsteck Reid & Company Architects  
d/b/a Reifsteck Wakefield Fanning & Company  
909 Arrow Road, Suite #4, Champaign, IL 61821  
217.351.4100 www.rwf-arch.com  
License Number: 184004617-001

Architect:  
Date Signed: 11/30/2026  
License Expires:  
These drawings and specifications are the property and copyright of Reifsteck Wakefield Fanning & Company and shall not be used on any other work except by written agreement with the Architect.

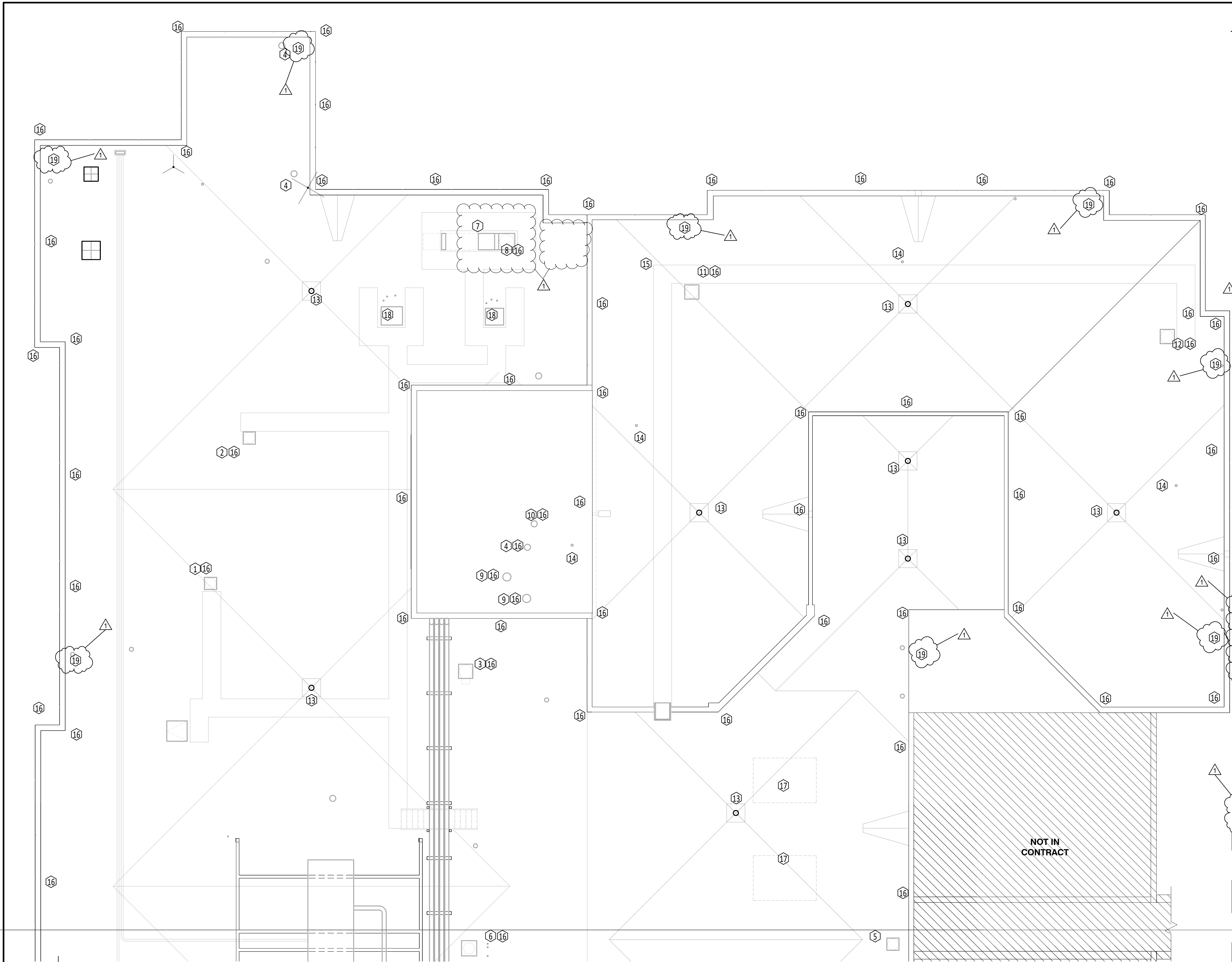
REVISIONS

No.	Date	Description
1	6/5/2025	Addendum #1

**CHAMPAIGN CO. JAIL ROOF REPLACEMENT**  
502 S. Lierman Ave.  
Urbana, IL 61802

ISSUE FOR BID  
ROOF PLAN - SOUTH  
DATE 22MAY25  
PROJECT 202511  
SHEET  
**A302**  
6/4/2025 9:15:49 AM

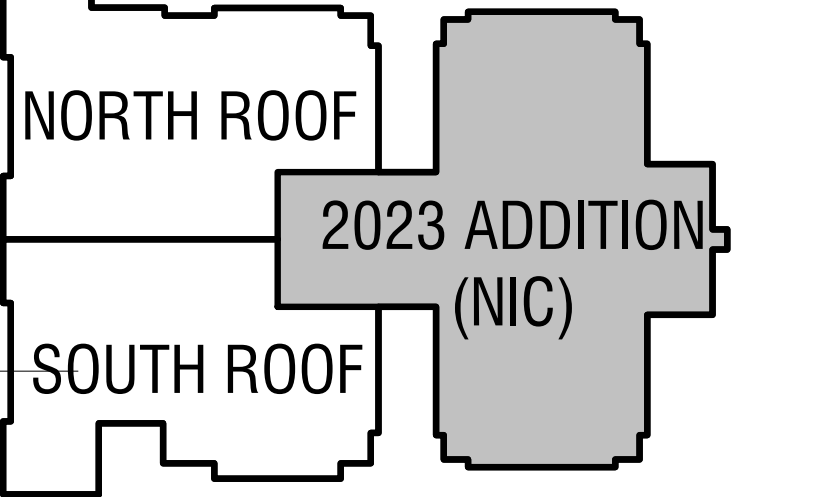




ROOF PLAN - NORTH - MECHANICAL  
SCALE: 1/8" = 1'-0"

KEYED NOTES - MECHANICAL

- 1 REMOVE EXISTING EXHAUST FAN EF-6 FROM ROOF CURB. DISCONNECT 16/16 EXHAUST DUCT AND ELECTRICAL CONNECTION. REINSTALL AND RECONNECT EXHAUST FAN AFTER ROOFING COMPLETION.
- 2 REMOVE EXISTING EXHAUST FAN EF-10 FROM ROOF CURB. DISCONNECT 12" EXHAUST DUCT AND ELECTRICAL CONNECTION. REINSTALL AND RECONNECT EXHAUST FAN AFTER ROOFING COMPLETION.
- 3 REMOVE EXISTING EXHAUST FAN EF-9 FROM ROOF CURB. DISCONNECT 16" EXHAUST DUCT AND ELECTRICAL CONNECTION. REINSTALL AND RECONNECT EXHAUST FAN AFTER ROOFING COMPLETION.
- 4 REMOVE EXISTING 8" COMBUSTION VENT CAP. EXTEND VENT TO 12" ABOVE NEW ROOF HEIGHT AND REINSTALL EXISTING VENT CAP.
- 5 REMOVE EXISTING EXHAUST FAN EF-5 FROM ROOF CURB. DISCONNECT 16/16 EXHAUST DUCT AND ELECTRICAL CONNECTION. REINSTALL AND RECONNECT EXHAUST FAN AFTER ROOFING COMPLETION.
- 6 REMOVE EXISTING CONDENSING UNIT EF-5 FROM ROOF CURB. DISCONNECT ELECTRICAL AND REFRIGERATION PIPING FROM UNIT. REINSTALL AND RECONNECT UNIT AFTER ROOFING COMPLETION.
- 7 REMOVE EXISTING KITCHEN MAKEUP AIR INTAKE. DISCONNECT ELECTRICAL AND 32/18 DUCTWORK. REINSTALL AND RECONNECT INTAKE HOOD AFTER ROOFING COMPLETION.
- 8 REMOVE EXISTING EXHAUST FAN EF-8 FROM ROOF CURB. DISCONNECT 30/16 EXHAUST DUCT. REMOVE EXISTING ROOF CURB. REINSTALL AND RECONNECT EXHAUST FAN AFTER ROOFING COMPLETION.
- 9 REMOVE EXISTING 14" COMBUSTION VENT CAP. 12" EXTEND VENT TO 12" ABOVE NEW ROOF HEIGHT AND REINSTALL EXISTING VENT CAP.
- 10 REMOVE EXISTING 12" COMBUSTION VENT CAP. 12" EXTEND VENT TO 12" ABOVE NEW ROOF HEIGHT AND REINSTALL EXISTING VENT CAP.
- 11 REMOVE EXISTING EXHAUST FAN EF-3 FROM ROOF CURB. DISCONNECT 20/20 EXHAUST DUCT AND ELECTRICAL CONNECTION. REINSTALL AND RECONNECT EXHAUST FAN AFTER ROOFING COMPLETION.
- 12 REMOVE EXISTING EXHAUST FAN EF-1 FROM ROOF CURB. DISCONNECT 20/20 EXHAUST DUCT AND ELECTRICAL CONNECTION. REINSTALL AND RECONNECT EXHAUST FAN AFTER ROOFING COMPLETION.
- 13 REMOVE EXISTING ROOF DRAIN. MAINTAIN AND PROTECT EXISTING STORM AND OVERFLOW PIPING FOR NEW CONNECTIONS OF NEW ROOF DRAIN. NEW ROOF DRAIN - ZURN 100C WITH D.C.C.I. BODY/CAST IRON DOME, UNDERDECK CLAMP, CAST IRON DOME ON OVERFLOW PIPE AND ROOF SUMP RECEIVER. INSULATE ROOF DRAIN BODY.
- 14 EXTEND EXISTING 4" PLUMBING VENT TO 12" ABOVE NEW FINISHED ROOF HEIGHT.
- 15 EXTEND EXISTING 6" PLUMBING VENT TO 12" ABOVE NEW FINISHED ROOF HEIGHT.
- 16 REMOVE EXISTING LIGHTNING PROTECTION AIR TERMINAL. REMOVE, ROLL, AND STORE ALL EXISTING LIGHTNING PROTECTION CABLING. INSTALL NEW HORIZONTAL ADHESION AIR TERMINALS IN EXISTING LOCATIONS. REINSTALL STORED CABLING USING HORIZONTAL ADHESION MOUNTS ON TOP OF NEW CAP. CONNECT TO NEW AIR TERMINALS. EXTEND WIRING AT ROOF MOUNTED EQUIPMENT TO MEET UL96A CODE REQUIREMENTS.
- 17 REMOVE ABANDONED ELECTRICAL CONDUIT TO BELOW ROOF MEMBRANE AND CAP.
- 18 REMOVE EXISTING ROOF MOUNTED KITCHEN CONDENSING UNIT. DISCONNECT REFRIGERANT PIPING AND ELECTRICAL. REINSTALL AND RECONNECT REFRIGERANT PIPING AND ELECTRICAL AFTER ROOFING WORK IS COMPLETE.
- 19 REMOVE EXISTING ROOF MOUNTED KITCHEN CONDENSING UNIT. DISCONNECT REFRIGERANT PIPING AND ELECTRICAL. REINSTALL AND RECONNECT REFRIGERANT PIPING AND ELECTRICAL AFTER ROOFING WORK IS COMPLETE.



KEY PLAN  
NO SCALE

**REIFSTECK  
WAKEFIELD  
FANNING**  
Reifsteck Reid & Company Architects  
d/b/a Reifsteck Wakefield Fanning & Company  
999 Arrow Road, Suite #4, Champaign, IL 61821  
217.351.4100 www.rf-wf-arch.com  
License Number: 184000497-001

**GHR ENGINEERS AND  
ASSOCIATES, INC.**  
Mechanical & Electrical Consulting Engineers  
1915 South Neil Street, Champaign, Illinois 61820  
217-350-0508 Business • 217-350-1092 Fax

Architect:  
Date Signed:  
License Expires: 11/30/2026

REVISIONS		
No.	Date	Description
1	06/05/20	ADDENDUM #1
25		

CHAMPAIGN CO.  
JAIL, ROOF  
REPLACEMENT  
502 S. Lierman Ave.  
Urbana, IL 61802

ISSUED FOR BID

ROOF PLAN - NORTH -  
MECHANICAL

DATE: 5/22/25  
PROJECT: GHR# 7781  
SHEET: MEP-301

6/3/2025 3:42:43 PM



KEYED NOTES - MECHANICAL

- 1 REMOVE EXISTING 8" COMBUSTION VENT CAP. EXTEND VENT TO 12" ABOVE NEW ROOF HEIGHT AND REINSTALL EXISTING VENT CAP.
- 2 REMOVE EXISTING 8" COMBUSTION VENT CAP. EXTEND VENT TO 12" ABOVE NEW ROOF HEIGHT AND REINSTALL EXISTING VENT CAP.
- 3 REMOVE EXISTING EXHAUST FAN EF-19 FROM ROOF CURB. DISCONNECT 30/30 EXHAUST DUCT AND ELECTRICAL CONNECTION. REINSTALL AND RECONNECT EXHAUST FAN AFTER ROOFING COMPLETION.
- 4 REMOVE EXISTING EXHAUST FAN EF-7 FROM ROOF CURB. DISCONNECT 16/16 EXHAUST DUCT AND ELECTRICAL CONNECTION. REINSTALL AND RECONNECT EXHAUST FAN AFTER ROOFING COMPLETION.
- 5 REMOVE EXISTING ROOF DRAIN, MAINTAIN AND PROTECT EXISTING STORM AND OVERFLOW PIPING FOR NEW CONNECTIONS OF NEW ROOF DRAIN. NEW ROOF DRAIN - ZURN 100C WITH D.C.C.I. BODY/CAST IRON DOME, UNDERDECK CLAMP, CAST IRON DOME ON OVERFLOW PIPE AND ROOF SUMP RECEIVER. INSULATE ROOF DRAIN BODY.
- 6 REMOVE EXISTING 12" COMBUSTION VENT CAP. EXTEND VENT TO 12" ABOVE NEW ROOF HEIGHT AND REINSTALL EXISTING VENT CAP.
- 7 REMOVE EXISTING 14" COMBUSTION VENT CAP. EXTEND VENT TO 12" ABOVE NEW ROOF HEIGHT AND REINSTALL EXISTING VENT CAP.
- 8 REMOVE EXISTING EXHAUST FAN EF-2 FROM ROOF CURB. DISCONNECT 20/20 EXHAUST DUCT AND ELECTRICAL CONNECTION. REINSTALL AND RECONNECT EXHAUST FAN AFTER ROOFING COMPLETION.
- 9 REMOVE EXISTING EXHAUST FAN EF-4 FROM ROOF CURB. DISCONNECT 20/20 EXHAUST DUCT AND ELECTRICAL CONNECTION. REINSTALL AND RECONNECT EXHAUST FAN AFTER ROOFING COMPLETION.
- 10 EXTEND EXISTING 4" PLUMBING VENT TO 12" ABOVE NEW FINISHED ROOF HEIGHT.
- 11 EXTEND EXISTING 6" PLUMBING VENT TO 12" ABOVE NEW FINISHED ROOF HEIGHT.
- 12 REMOVE EXISTING LIGHTNING PROTECTION AIR TERMINAL. REMOVE, ROLL AND STORE ALL EXISTING LIGHTNING PROTECTION CABLING. INSTALL NEW HORIZONTAL ADHESION AIR TERMINALS IN EXISTING LOCATIONS. REINSTALL STORED CABLING USING HORIZONTAL ADHESION MOUNTS ON TOP OF NEW CAP. CONNECT TO NEW AIR TERMINALS. EXTEND WIRING AT ROOF MOUNTED EQUIPMENT TO MEET UL96A CODE REQUIREMENTS.
- 13 REMOVE ABANDONED ELECTRICAL CONDUIT TO BELOW ROOF MEMBRANE AND CAP.
- 14 EXISTING GROUNDING DOWN LEADS TO STAY. MAINTAIN PENETRATION THROUGH NEW ROOF. RECONNECT DURING SYSTEM REINSTALLATION.



REIFSTECK  
WAKEFIELD  
FANNING

Reifsteck Reid & Company Architects  
d/b/a Reifsteck Wakefield Fanning & Company  
999 Arrow Road, Suite #4, Champaign, IL 61821  
217.351.4100 www.rfw-arch.com  
License Number: 184000497-001



ENGINEERS AND  
ASSOCIATES, INC.

Mechanical & Electrical Consulting Engineers  
1815 South Neil Street, Champaign, Illinois 61820  
217-350-0508 Business • 217-350-1092 Fax

Architect:  
Date Signed:  
License Expires: 11/30/2026

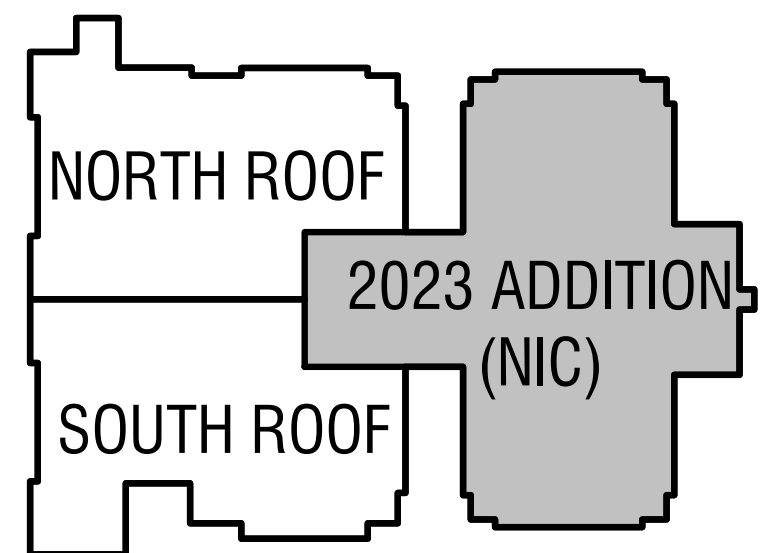
REVISIONS		
No.	Date	Description
1	06/05/20	ADDENDUM #1
25		

CHAMPAIGN CO.  
JAIL, ROOF  
REPLACEMENT  
502 S. Lierman Ave.  
Urbana, IL 61802

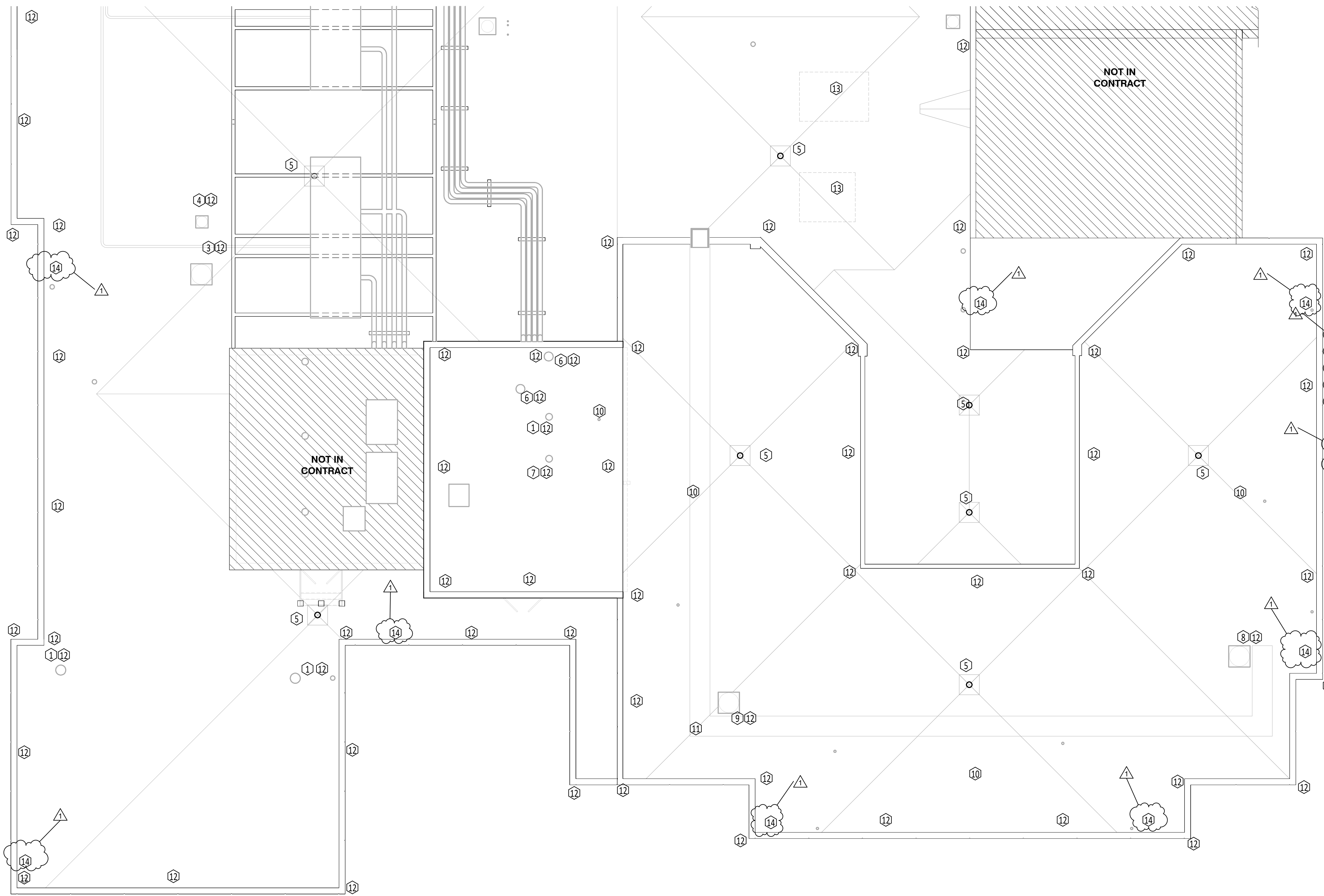
ISSUED FOR BID

ROOF PLAN - SOUTH -  
MECHANICAL

DATE	5/22/25	SHEET
PROJECT	6/13/2025 3:42:43 PM	
GHR#	7781	MEP-302



KEY PLAN  
NO SCALE



ROOF PLAN - SOUTH - MECHANICAL  
SCALE: 1/8" = 1'-0"