



Illinois Environmental Protection Agency

Bureau of Water • 1021 N. Grand Avenue E. • P.O. Box 19276 • Springfield • Illinois • 62794-9276

Division of Water Pollution Control ANNUAL FACILITY INSPECTION REPORT

for NPDES Permit for Storm Water Discharges from Separate Storm Sewer Systems (MS4)

This fillable form may be completed online, a copy saved locally, printed and signed before it is submitted to the Compliance Assurance Section at the above address. Complete each section of this report.

Report Period: From March, 2016 To March, 2017

Permit No. ILR40 00256

MS4 OPERATOR INFORMATION: (As it appears on the current permit)

Name: County of Champaign, Illinois Mailing Address 1: Brookens Administrative Center
Mailing Address 2: 1776 East Washington Street County: Champaign
City: Urbana State: IL Zip: 61802 Telephone: (217) 384-3708
Contact Person: John Hall, Director of Planning and Zoning Email Address: jhall@co.champaign.il.us
(Person responsible for Annual Report)

Name(s) of governmental entity(ies) in which MS4 is located: (As it appears on the current permit)

Champaign County, Illinois

THE FOLLOWING ITEMS MUST BE ADDRESSED.

A. Changes to best management practices (check appropriate BMP change(s) and attach information regarding change(s) to BMP and measurable goals.)

- | | | | |
|--|--------------------------|---|--------------------------|
| 1. Public Education and Outreach | <input type="checkbox"/> | 4. Construction Site Runoff Control | <input type="checkbox"/> |
| 2. Public Participation/Involvement | <input type="checkbox"/> | 5. Post-Construction Runoff Control | <input type="checkbox"/> |
| 3. Illicit Discharge Detection & Elimination | <input type="checkbox"/> | 6. Pollution Prevention/Good Housekeeping | <input type="checkbox"/> |

B. Attach the status of compliance with permit conditions, an assessment of the appropriateness of your identified best management practices and progress towards achieving the statutory goal of reducing the discharge of pollutants to the MEP, and your identified measurable goals for each of the minimum control measures.

C. Attach results of information collected and analyzed, including monitoring data, if any during the reporting period.

D. Attach a summary of the storm water activities you plan to undertake during the next reporting cycle (including an implementation schedule.)

E. Attach notice that you are relying on another government entity to satisfy some of your permit obligations (if applicable).

F. Attach a list of construction projects that your entity has paid for during the reporting period.

Any person who knowingly makes a false, fictitious, or fraudulent material statement, orally or in writing, to the Illinois EPA commits a Class 4 felony. A second or subsequent offense after conviction is a Class 3 felony. (415 ILCS 5/44(h))

C. Pius Weibel

Owner Signature:

C. Pius Weibel

Printed Name:

5/19/17

Date:

Champaign County Board Chair

Title:

EMAIL COMPLETED FORM TO: epa.ms4annualinsp@illinois.gov

or Mail to: ILLINOIS ENVIRONMENTAL PROTECTION AGENCY

WATER POLLUTION CONTROL
COMPLIANCE ASSURANCE SECTION #19
1021 NORTH GRAND AVENUE EAST
POST OFFICE BOX 19276
SPRINGFIELD, ILLINOIS 62794-9276

IL 532 2585
WPC 691 Rev 6/10
This Agency is authorized to require this information under Section 4 and Title X of the Environmental Protection Act (415 ILCS 5/4, 5/39). Failure to disclose this information may result in a civil penalty of not to exceed \$50,000 for the violation and an additional civil penalty of not to exceed \$10,000 for each day during which the violation continues (415 ILCS 5/42) and may also prevent this form from being processed and could result in your application being denied. This form has been approved by the Forms Management Center.
Resolution 9955

ILLINOIS ENVIRONMENTAL PROTECTION AGENCY
ANNUAL FACILITY INSPECTION REPORT
April 1, 2017
N.P.D.E.S. PHASE II PERMIT FOR STORMWATER DISCHARGES
from
MUNICIPAL SEPARATE STORM SEWER SYSTEMS

Champaign County, Illinois
NPDES Permit No. ILR40 00256

REPORTING PERIOD:

Year 3 is April 1, 2016 to March 31, 2017

MS4 OPERATOR INFORMATION:

County of Champaign, Illinois
Brookens Administrative Center
1776 East Washington Street
Urbana IL 61802
Contact person: John Hall, Director of Planning and Zoning

GOVERNMENTAL ENTITY IN WHICH MS4 IS LOCATED:

Champaign County, Illinois

INTRODUCTION

Champaign County was identified as a small Municipal Separate Storm Sewer System (MS4) in March 2003 as part of the expanded Phase II of the National Pollutant Discharge Elimination System (NPDES) Storm Water Program.

Mandated by Congress under the Clean Water Act, the NPDES Storm Water Program is a comprehensive two-phased national program for addressing the non-agricultural sources of storm water discharges which adversely affect the quality of our nation's waters. The Clean Water Act prohibits anybody from discharging pollutants through a point source into a water of the United States unless they have an NPDES permit. A point source is any discernible, confined and discrete conveyance, such as a pipe, ditch, channel, or container.

Phase II required small MS4s in urbanized areas to obtain NPDES permits and implement six minimum control measures by using selected best management practices (BMPs).

Urbanized areas are delineated by the Census Bureau and are defined as a central place or places and the adjacent densely settled surrounding area, that together have a residential population of at least 50,000 people and an overall population density of at least 500 people per square mile. Only about 10 square miles (about 1%) of the approximately 1,000 square miles that make up Champaign County are included in the urbanized area (see the attached map).

Champaign County is not a municipality but the regulatory definition of MS4 also includes any County owned roads with a drainage system. County Highway roadside ditches are currently the only point source discharges in the urbanized area maintained by Champaign County.

Champaign County, Illinois
MS4 ANNUAL FACILITY INSPECTION REPORT
REPORTING PERIOD YEAR 3 (4/1/16 – 3/31/17) APRIL 1, 2017

Champaign County must maintain compliance with the MS4 requirements of the NPDES Storm Water Program. MS4 compliance requires that an updated Notice of Intent (NOI) be on file with the Illinois Environmental Protection Agency (IEPA) at all times. The NOI must explain which best management practices Champaign County will use to implement the six required minimum control measures. The six required minimum control measures are the following:

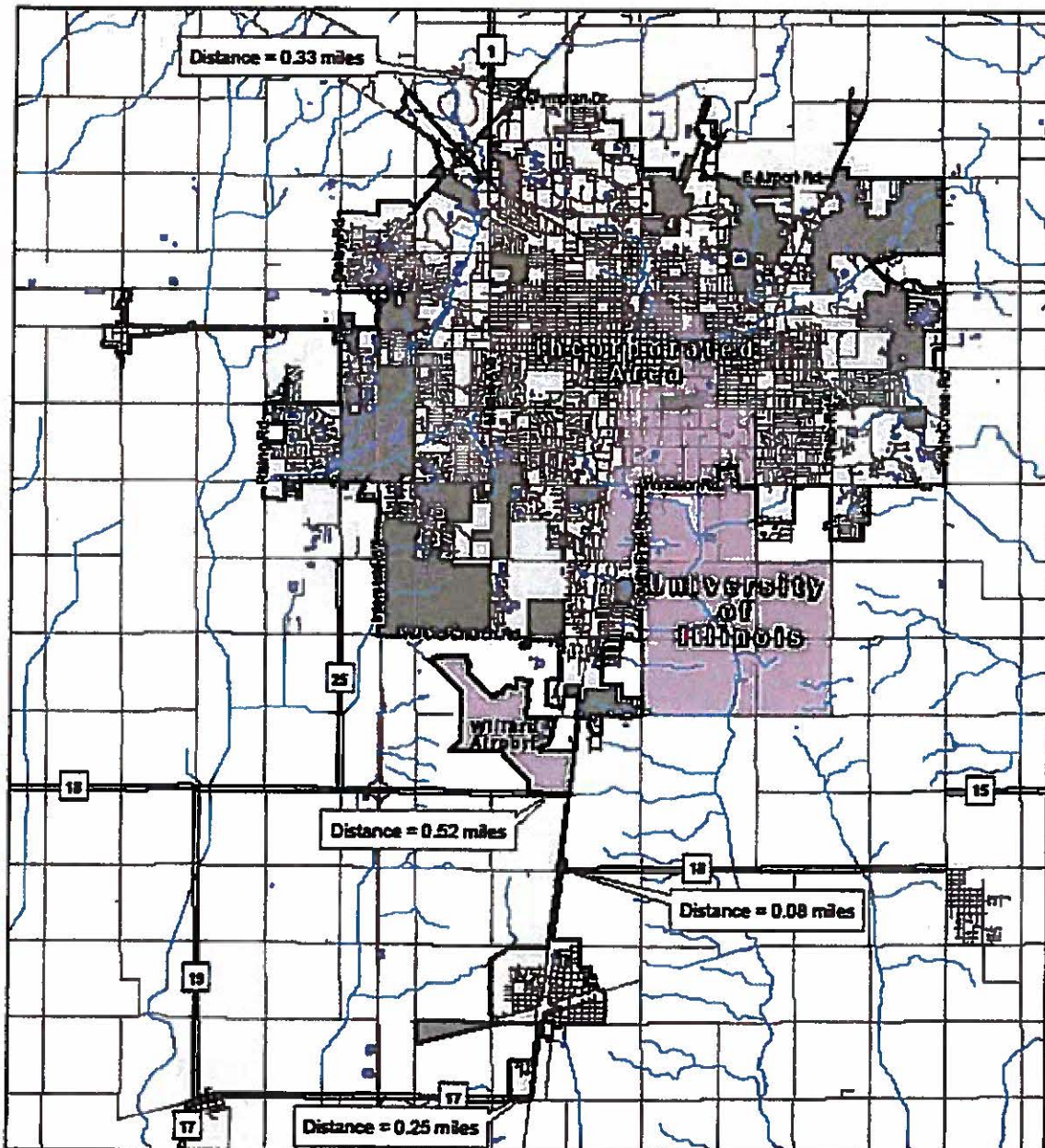
- **Public Education and Outreach.** Selected BMPs should educate the public on the various ways to reduce storm water pollution.
- **Public Participation and Involvement.** Selected BMPs should involve the public in developing, implementing, and reviewing MS4 best management practices.
- **Illicit Discharge Detection and Elimination.** Selected BMPs should identify improper discharges and spills to drainage systems and include enforcement mechanisms.
- **Construction Site Runoff Control.** Selected BMPs should enable construction site operators (builders and MS4s) to manage storm water runoff so as to reduce pollution.
- **Post-Construction Runoff Control.** Selected BMPs should enable property owners (developers and MS4s) to manage storm water runoff so as to reduce pollution from a site after construction activities have ended.
- **Pollution Prevention and Good Housekeeping.** Selected BMPs should enable the MS4 entity to minimize pollution from its own property and facilities by reducing pollution from streets, parking lots, open spaces and storage and vehicle maintenance areas and is discharged into local waterways or that results poor maintenance of storm sewer systems.

Champaign County has worked in cooperation with the other MS4s in the Champaign County Urbanized Area to share costs and expertise and common efforts to develop a regional consistency towards fulfilling the NPDES Phase II MS4 requirements.

Champaign County has sought to develop a plan suited to the MS4 requirements but also tailored to the abilities of an Illinois county. The NPDES Phase II MS4 requirements were included as a formal County land use policy in the Champaign County Land Resource Management Plan that was adopted in April 2010.

Champaign County filed a third NOI with IEPA to include the five-year period of April 1, 2014 to March 31, 2019. This document serves as the annual report for Year 3 activities.

Champaign County, Illinois
MS4 ANNUAL FACILITY INSPECTION REPORT
REPORTING PERIOD YEAR 3 (4/1/16 – 3/31/17) **APRIL 1, 2017**



Champaign County MS4 Jurisdiction

Urbanized Area based on the 2010 Census

This map shows the defined MS4 jurisdiction including 10.4 square miles of unincorporated County. Location and size of County stormwater facilities are noted (Ex: Distance = 0.25 miles).

Corporate Limits updated 5/5/17

MS4 Related Boundaries

- Urbanized Area 2010
- Streets
- County MS4 Area 2012

rpc
REGIONAL
PLANNING
COUNCIL

OGIS
CONSULTING

Map Created
7/17/14



0 1.5 3 Miles

B.M.P. MONITORING AND ASSESSMENT PROGRAM

Effective 3/1/16, each Small MS4 is required to implement a monitoring and assessment program to evaluate the effectiveness of selected best management practices (BMPs) at reducing pollutant loadings and water quality impacts. The monitoring and assessment program may include evaluation of BMPs and/or direct water quality monitoring, at the discretion of each Small MS4, but the program should be tailored to the size and characteristics of the Small MS4 and the relevant watershed.

Outfall/ Discharge Monitoring and Physical Stream Assessment

The Champaign County Unincorporated MS4 will collaborate with the municipal MS4 jurisdictions in Champaign County in developing a monitoring and assessment program for the Champaign County Unincorporated MS4 that matches as closely as possible the municipal MS4 monitoring and assessment programs. Municipal MS4 agencies in the Champaign-Urbana Urbanized Area rely on a combination of outfall/ discharge monitoring and assessment of physical/habitat characteristics such as stream bank erosion caused by storm water discharges.

Methods and practices used for the Champaign County Unincorporated MS4 Monitoring and Assessment program will be based on municipal MS4 practices and methods as much as possible and will be supplemented as necessary by practices described in the following documents:

- *Illicit Discharge Detection and Elimination A Guidance Manual for Program Development and Technical Assessments*, published by the Center for Watershed Protection and Robert Pitt, University of Alabama, October 2004.
- *UNIFIED STREAM ASSESSMENT: A USER'S MANUAL Version 2.0, Urban Subwatershed Restoration Manual No. 10*, published by the Center for Watershed Protection, February 2005.
- *Stream Visual Assessment Protocol*, published by the United States Department of Agriculture Natural Resources Conservation Service National Water and Climate Center, Technical Note 99-1, December 1998.

Justification

The unincorporated Champaign County MS4 Area is highly interconnected with the municipal MS4 Area and using the same (or nearly the same) monitoring and assessment (M&A) methods to evaluate the effectiveness of storm water best management practices (BMPs) in the unincorporated MS4 Area may help minimize the overall costs of implementing and conducting the M&A program in the unincorporated MS4 Area; and should eliminate confusion that could otherwise result if a different approach were used than is used in the municipal MS4s; and may provide a more accurate overall understanding of the effectiveness of BMPS for the entire Champaign County urbanized area.

The *Unified Stream Assessment (USA)* is a continuous stream walk method that systematically evaluates stream conditions and that can be applied to both rural and urban streams. Staff can perform the USA with relatively minimal training. USA protocols should be adapted to meet agency needs and skills and to address regional stream conditions.

The USA includes specific protocols and model forms for documenting the assessments of Storm Water Outfalls and Severe Bank Erosion. The USA assessment for Storm Water Outfalls is very similar to the

Outfall Reconnaissance Inventory (ORI) used in *Illicit Discharge Detection and Elimination*. Including ORI methods in the USA Storm Water Outfall assessments can improve the overall assessment of storm water outfalls and discharges.

Severe bank erosion caused by storm water discharges can be accurately identified only after identifying the average erosion condition for that particular stream reach. The USA includes a Reach Level Assessment to characterize overall conditions within each reach of the stream. Guidance is included in the USA assessment of Severe Bank Erosion to help identify locations with more severe erosion. The *Stream Visual Assessment Protocol* (SVAP) also provides useful additional guidance for making the assessment of Severe Bank Erosion.

The USA protocols assume identification of uniform stream reaches. Stream reaches will be identified and mapped prior to actual field investigations. During the field investigation the various stream reaches will be identified using GIS locators. Standard worksheets will be completed for each reach for the entire length of stream in the MS4 Area. Streams (miles) to be assessed are as follows:

- Vermilion Watershed:
 - Saline Branch Drainage Ditch (3.2 miles)
- Upper Kaskaskia Watershed:
 - Copper Slough (1.6 miles)
 - Phinney Branch (1.1 miles)
- Upper Embarras Watershed
 - an unnamed tributary near Lake Park (.6 mile).

Gaining access to streams in the unincorporated MS4 Area will be a significant challenge because all of the streams are on private property.

Annual monitoring is planned to occur during August through October. Annual monitoring will note the conditions for the current year and identify changes from previous years. The results will be reported in the Annual Update.

Follow up investigations may be necessary based on observed changes.

Outfalls were identified in Year 3 per the IEPA 4/22/16 Acceptance of Response to Noncompliance Advisory Letter but no actual Monitoring was able to be completed.

SELF-ASSESSMENT OF PERMIT COMPLIANCE

Tables 1 through 6 summarize Champaign County Unincorporated MS4 Storm Water Program activities from April 1, 2016, through March 31, 2017. Table 7 identifies BMPs that were started and still in progress and Table 8 identifies BMPs still pending.

Table 1: Public Education and Outreach Activities 4/1/16 – 3/3/17

BMP ID	Activities
A.1.1. - Flyers and information sheets at permit counter.	Handouts are displayed and available at Planning and Zoning permit counter.
A.2.1. - Inform business groups about MS4, NPDES, and BMPs upon request.	No requests for presentations about MS4, NPDES and BMPs were made from business groups.
A.2.2. - Inform developer, contractor, engineering, and architecture groups about MS4, NPDES, and BMPs.	No presentations were made.
A.2.4. - Inform environmental, conservation, and citizen groups about MS4, NPDES, and BMPs upon request.	No requests for presentations about MS4, NPDES and BMPs were made from environmental, conservation, and citizen groups.
A.6.1- Educational and informational material on web page.	Information about the Champaign County MS4 program and storm water management in general was added to the Champaign County website.

Table 2: Public Participation and Involvement Activities 4/1/16 – 3/3/17

BMP ID	Activities
B.4.1 – Comply with applicable state and local public notice requirements.	All public hearings and meetings are noticed as required by state law and local ordinances and policies.
B.6.1. - Intergovernmental Storm Water Management group meetings.	During the program year County staff attended and participated in meetings with other MS4 jurisdictions on March 8, May 20, July 12, and December 13.
B.7.1. - Include NPDES MS4 requirements in the County's Land Resource Management Plan.	Funding for MS4 projects expanded in the RPC Work Plan for FY17.

Table 3: Illicit Discharge Detection and Elimination Activities 4/1/16 – 3/3/17

BMP ID	Activities
C.1.1- Map drainage system outfalls into streams and rivers	The storm sewer system map for the unincorporated Champaign County MS4 Area was mapped to 50% complete. The Draft 50% complete map can be viewed on the Champaign County website (www.co.champaign.il.us) under the Department of Planning and Zoning and at the web address below: http://ccgisc.maps.arcgis.com/home/webmap/viewer.html?webmap=04d6a107dd50435c8fc65945e1358f6e
C.3.1. - Establish citizen complaint phone line for illegal dumping and illicit discharges into drainage systems.	The Department of Planning and Zoning phone line is maintained for citizen complaints regarding illegal dumping and illicit discharges.
C.3.2. - Establish citizen complaint phone line for non-complying and/or non-functioning private sewage treatment systems	The Department of Planning and Zoning phone line is maintained for citizen complaints regarding non-complying and / or non-functioning private sewage treatment systems.
C.6.1. - Annual Report to the Environment and Land Use Committee (of the Champaign County Board) and the Champaign County Board.	Annual Report prepared and presented to the Environment and Land Use Committee (ELUC) and the Champaign County Board.

Champaign County, Illinois
MS4 ANNUAL FACILITY INSPECTION REPORT
REPORTING PERIOD YEAR 3 (4/1/16 – 3/31/17) APRIL 1, 2017

Table 4: Construction Site Runoff Control Activities 4/1/16 – 3/3/17

BMP ID	Activities
D.1.1 - Soil erosion and sediment control regulations.	Soil erosion and sediment control regulations in the Champaign County Storm Water Management and Erosion Control Ordinance were enforced for all Land Disturbance Erosion Control (LDEC) Permits.
D.2.1- Erosion and sediment control BMPs	All Land Disturbance Erosion (LDEC) Permits were reviewed for use of appropriate BMP's
D.4.1. - Develop processes and procedures to evaluate proposed construction site runoff mechanisms.	Procedures to evaluate proposed construction site runoff mechanisms are refined in the review of LDEC Permits.
D.4.2. - Training class or workshop for evaluating and inspecting construction site runoff control mechanisms.	No training occurred in Year 3.
D.6.1 - Develop procedures and processes to inspect construction sites for compliance with construction site runoff control mechanisms.	Procedures were refined as more experience was gained in the review of LDEC Permits.

Table 5: Post-Construction Runoff Control Activities 4/1/16 – 3/3/17

BMP ID	Activities
E.4.1. - Training class or workshop for evaluating and inspecting construction site runoff control mechanisms (post-construction).	No training occurred in Year 3.

Table 6: Pollution Prevention / Good Housekeeping Activities 4/1/16 – 3/3/17

BMP ID	Activities
F.1.2 Spill Response Protocol	<p>The Champaign County Emergency Management Agency (CCEMA) conducted or participated in the following train in the program year:</p> <ul style="list-style-type: none"> • April 2016: The Assistant Coordinator attended a conference with a spill exercise. • October 2016: A spill exercise with the University of Illinois • March 2017 the Champaign County Emergency Management Agency hosted a display bottle for training of responders regarding LP and anhydrous ammonia. <p>Documentation of complete training is kept in file.</p>
F.1.4- Hazardous material and storage management training.	All relevant hazardous materials storage and handling reviewed with Facilities Director.

Champaign County, Illinois
MS4 ANNUAL FACILITY INSPECTION REPORT
REPORTING PERIOD YEAR 3 (4/1/16 – 3/31/17) APRIL 1, 2017

Table 7: BMPs in Progress

BMP ID	Status
C.2.1. - Prohibit illegal dumping and illicit discharges into drainage system.	Preliminary Ordinance language has been drafted regarding illegal dumping and illicit discharges into drainage systems and will be adopted in Year 4.
C.3.3. - Create a database of existing private sewage treatment systems and develop management plan to bring non-compliant systems into compliance.	Records of private sewage treatment systems obtained from Public Health Department, GIS database is under development.
D.3.1. - Prohibit illegal dumping and illicit discharges into storm drainage system from construction activities.	Preliminary Ordinance language has been drafted regarding illegal dumping and illicit discharges into drainage systems but has not yet been adopted. The Storm Water Management and Erosion Control Ordinance includes a prohibition of illegal dumping and illicit discharges from construction activities.
E.3.1. - Develop procedures to insure that storm water management facilities are maintained to function as designed (post-construction).	The Storm Water Management and Erosion Control Ordinance requires ongoing maintenance of storm water management facilities.
E.5.1. - Develop procedures and processes to inspect construction sites for compliance with post-construction runoff control mechanisms.	The Storm Water Management and Erosion Control Ordinance requires "as-built" documentation.

Table 8: BMPs Pending

BMP ID	Explanation of Pending Status
C.1.1. - Map drainage system outfalls into streams and rivers.	Storm sewer system map for the unincorporated MS4 Area is 50% complete and will be 100% complete by 12/31/17.
E.1.1 Implement a public education program about the benefits of green infrastructure and green housekeeping in minimizing the volume of storm water runoff and pollutants from existing privately owned developed property.	New BMP to be completed in Year 4.
E.1.2- Implement a public education program about the water quality impacts of overuse of fertilizers and pesticides in non-agricultural uses.	New BMP to be completed in Year 4.
E.2.1. - Require annual inspections of publicly owned storm water management facilities (post-construction).	Expected to be included in SWPPP to be developed in 2017.
F.1.1. - Spill prevention protocol.	Undetermined due to lack of coordination within County Departments. Expected to be established with the development of the SWPPP.
F.2.1. - Storm water Pollution Prevention Plan (SWPPP) for County owned facilities.	Milestones changed. SWPPP expected to be completed in Year 4.
F.3.1. - Investigate feasibility and effectiveness of integrated, bio-detention and filtering for County campus redesign.	Issue was not discussed by the County Board.

CHANGES TO BEST MANAGEMENT PRACTICES

Attachment A reviews changes that were made in Year 3 upon receipt of the new ILR40 and changes that are proposed for 4.

STATUS OF COMPLIANCE

Attachment B reviews the status of compliance for all BMPs.

INFORMATION COLLECTED AND ANALYZED IN YEAR 3

Attachment C summarizes there were no observations or reports were made or received during the reporting year.

STORMWATER PROGRAM ACTIVITIES PROPOSED FOR YEAR 4 (April 1, 2017–March 31, 2018)

The activities proposed for Year 3 (April 1, 2017– March 31, 2018) are summarized in Attachment D.

RELIANCE ON OTHER GOVERNMENTAL ENTITY

Champaign County does, and will continue to participate in and share resources with the Cooperative MS4 Group; however, it does not rely on another governmental entity to satisfy its permit obligations.

YEAR 3 CONSTRUCTION PROJECTS

Champaign County construction projects may be authorized under the Facilities Department or the Highway Department. Projects and details are provided in Table 9.

ATTACHMENTS

- A Changes to Best Management Practices
- B Status of Compliance with N.P.D.E.S. Permit Conditions for Year 3
- C Information Collected for Year 3
- D Proposed NPDES Permit Activities for Year 4 (April 1, 2017 - March 31, 2018)
- E Champaign County Unincorporated Area Environmental Justice Area Analysis for Year 3 (April 1, 2016- March 31, 2017)
- F Champaign County Unincorporated MS4 Area Storm Water Survey (Pilot or Pre-Test) February 23, 2017
- G Champaign County Unincorporated MS4 Area Storm Sewer System (Web) Map (excerpt from 50% complete Draft map) March 31, 2017

Champaign County, Illinois
MS4 ANNUAL FACILITY INSPECTION REPORT
REPORTING PERIOD YEAR 3 (4/1/16 – 3/31/17) APRIL 1, 2017

Table 9: Construction Projects from April 1, 2016 through March 31, 2017

Section Number	Road District	Project Type	Area of Disturbance	Status
15-12017-00-BR	Champaign County	Bridge Replacement	<1 acre	Expected completion in 2017
15-12017-00-BR	Compromise Twp.	Bridge Replacement	<1 acre	Expected completion in 2017
15-12017-00-BR	Urbana Twp.	Bridge Replacement	<1 acre	Expected completion in 2017
15-12017-00-BR	Stanton Twp.	Culvert Replacement	<1 acre	Expected completion in 2017
16-004430-RS	CH 16 – IL 130 to US Rte 45	C.I.R. and Bituminous Overlay Road Repair	<1 acre	Expected completion in 2017
16-00444-00-RS	Champaign County	Countywide guardrail replacement	<1 acre	Expected completion in 2017
17-00445-00-RS	CH 13 – CH 15 to Douglas County Line	C.I.R. and Bituminous Overlay Road Repair	<1 acre	Expected completion in 2017
17-00446-00-SW	Champaign County	Countywide ADA Sidewalk Ramp Replacement on County Highways	>1 acre	
NOTES 1. All construction projects during this period were roadway projects.				

1. Delete BMP Number A.2.3 Inform agriculture community, Farm Bureau, and 4-H about MS4, NPDES, and BMPs

Agriculture is exempt from the MS4 Storm Water Program and therefore this BMP is not needed as part of Champaign County's MS4 Program.

2. Add new BMP for MS4 Storm Water Public Survey

BMP No. B.6.2.

Brief Description of BMP: Prepare a storm water survey that can be used to capture public comment on the MS4 Storm Water Program.

Measurable Goals, including frequencies: Prepare a storm water survey that can be used to capture annual public comment on the Champaign County Unincorporated MS4 Area Storm Water Program.

Milestones:

Year 1: NONE

Year 2: NONE

Year 3: Develop and test the Champaign County Unincorporated MS4 Area Storm Water Survey

Year 4: Make the Champaign County Unincorporated MS4 Area Storm Water Survey available on the Champaign County website.

Year 5: Make the Champaign County Unincorporated MS4 Area Storm Water Survey available on the Champaign County website.

3. Add new BMP for Annual Public Meeting for Champaign County Unincorporated MS4 Area Storm Water Program

BMP No. B.6.3.

Brief Description of BMP: Hold Annual Public Storm Water Meeting at the Champaign County Board Environment and Land Use Committee (ELUC) Meeting to receive public comments regarding the Champaign County Unincorporated MS4 Area Storm Water Program.

Measurable Goals, including frequencies: Have the Champaign County Unincorporated MS4 Area Storm Water Program as an Agenda item at one ELUC Meeting each year.

Milestones:

Year 1: NONE

Year 2: NONE

Year 3: Storm water management in the Wilbur Heights Subdivision (an Environmental Justice area) was discussed at the August 4, 2016, meeting of the Champaign County Board Environment and Land Use Committee

Year 4: Hold a public meeting to receive public comments regarding the Champaign County Unincorporated MS4 Area Storm Water Program at the March 2018 regular meeting of the Champaign County Board's Environment and Land Use Committee (ELUC). Public comments will include (a) comments received from the April 2017 random sample survey of Champaign County Unincorporated MS4 Area Environmental Justice (EJ) Areas; (b) comments received from respondents of the Champaign County Unincorporated MS4 Area Storm Water Survey available on the Champaign County website during the period 4/1/17 through 3/1/18; and (c) comments made by public participation at the Public Meeting in March 2018. All public comments received in regards to the Champaign County Unincorporated MS4 Area Storm Water Program during Year 4 will be reported in the Annual Facility Inspection Report for Year 4.

Year 5: Hold a public meeting to receive public comments regarding the Champaign County Unincorporated MS4 Area Storm Water Program at the March 2019 regular meeting of the Champaign County Board's Environment and Land Use Committee (ELUC). Public comments will include (a) comments received from the April 2018 random sample survey of Champaign County Unincorporated MS4 Area Environmental Justice (EJ) Areas; (b) comments received from respondents of the Champaign County Unincorporated MS4 Area Storm Water Survey available on the Champaign County website during the period 4/1/18 through 3/1/19; and (c) comments made by public participation at the Public Meeting in March 2019. All public comments received in regards to the Champaign County Unincorporated MS4 Area Storm Water Program during Year 5 will be reported in the Annual Facility Inspection Report for Year 5.

4. Add new BMP for Public Involvement/ Participation of Environmental Justice Areas within the Unincorporated MS4 Area

BMP No. B.6.4.

Brief Description of BMP: Identify Environmental Justice areas within the Champaign County Unincorporated MS4 Area and include appropriate public participation.

Measurable Goals, including frequencies: Identify Environmental Justice (EJ) areas within the Champaign County Unincorporated MS4 Area and update EJ Areas annually based on the most current US Census information and randomly sample the EJ area population for storm water concerns using the Champaign County Unincorporated MS4 Area Storm Water Survey with a postage-paid reply envelope. Review the survey results at the next Annual Public Storm Water Meeting held at a meeting of the Champaign County Board's Environment and Land Use Committee (ELUC).

Milestones:

Year 1: NONE

Year 2: NONE

Year 3: Environmental Justice (EJ) areas within the Champaign County Unincorporated MS4 Area were identified using the most current data from the U.S. Census Bureau's American Community Survey and in March 2017 the Draft Champaign County Unincorporated MS4 Area Storm Water Survey with a postage-paid reply envelope was tested on a small sample of the EJ area population.

Year 4: In April 2017 a random sample survey of the EJ population was conducted using the Champaign County Unincorporated MS4 Area Storm Water Survey with a postage-paid reply envelope. The results of that survey will be reviewed at the March 2018 meeting of the Champaign County Board's Environment and Land Use Committee (ELUC) and reported in the Annual Facility Inspection Report for Year 4.

Year 5: Environmental Justice (EJ) areas within the Champaign County Unincorporated MS4 Area will be verified in January 2018 using the most current data from the U.S. Census Bureau's American Community Survey and a random sample survey of the EJ population will be conducted using the Champaign County Unincorporated MS4 Area Storm Water Survey with a postage-paid reply envelope. The results of that survey will be reviewed at the March 2019 meeting of the Champaign County Board's Environment and Land Use Committee (ELUC) and reported in the Annual Facility Inspection Report for Year 5.

5. Revise Milestones for BMP No. C.2.1 Prohibit illegal dumping and illicit discharges into drainage system through the Nuisance Ordinance.

BMP No. C.2.1.

Brief Description of BMP: Prohibit illegal dumping and illicit discharges into drainage system through the Nuisance Ordinance.

Measurable Goals, including frequencies: Review existing Nuisance Ordinance and revise Ordinance to include illegal dumping and illicit discharges into drainage systems. Adopt a new Ordinance or amend existing Ordinance.

Milestones:

Year 1: Review existing Ordinance and drafted new language for future adoption after public hearing at Zoning Board of Appeals. (MILESTONE ACHIEVED)

Year 2: ~~Amend Ordinance with new language~~ MILESTONE NOT ACHIEVED

Year 3: ~~Enforce amended Nuisance Ordinance.~~ MILESTONE NOT ACHIEVED

Year 4: Amend Nuisance Ordinance with new illicit discharge language.

Year 5: Enforce amended Nuisance Ordinance.

- 6. Revise Milestones for BMP No. D.3.1 Prohibit illegal dumping and illicit discharges into drainage systems from construction activities. Implement either a new Ordinance or amend existing Ordinance.**

BMP No. D.3.1.

Brief Description of BMP: Prohibit illegal dumping and illicit discharges into drainage systems from construction activities in the Nuisance Ordinance .

Measurable Goals, including frequencies: Review existing Nuisance Ordinance and revise Ordinance language to include illegal dumping and illicit discharges into drainage systems from construction activities. Adopt a new Ordinance or amend existing Ordinance.

Milestones:

Year 1: Review existing Ordinance and draft new language for future adoption after public hearing at Zoning Board of Appeals. (MILESTONE ACHIEVED)

Year 2: Review existing Ordinance and draft new language for future adoption after public hearing at Zoning Board of Appeals. (MILESTONE ACHIEVED)

Year 3: ~~Amend or adopt Nuisance Ordinance with updates.~~ MILESTONE NOT ACHIEVED

Year 4: Amend Nuisance Ordinance with new illicit discharge language.

Year 5: Enforce amended Nuisance Ordinance.

- 7. Add new BMP No. E.1.1 Implement a public education program about the benefits of green infrastructure and green housekeeping in minimizing the volume of storm water runoff and pollutants from existing privately owned developed property.**

BMP No. E.1.1.

Brief Description of BMP: Implement a public education program about the benefits of green infrastructure and green housekeeping in minimizing the volume of storm water runoff and pollutants from existing privately owned developed property.

Measurable Goals, including frequencies: Add a Green Infrastructure page to the Champaign County website to educate landowners about the benefits of green infrastructure and green housekeeping in minimizing the volume of storm water runoff and pollutants from existing privately owned developed property.

Milestones:

Year 1: NONE

Year 2: NONE

Year 3: NONE

Year 4: Develop and implement a Champaign County Green Infrastructure & Green Housekeeping web page

Year 5: Update the Champaign County Green Infrastructure & Green Housekeeping web page

- 8. Add new BMP No. E.1.2 Implement a public education program about the water quality impacts of overuse of fertilizers and pesticides in non-agricultural uses.**

BMP No. E.1.2.

Brief Description of BMP: Implement a public education program about the water quality impacts of overuse of fertilizers and pesticides in non-agricultural uses.

Measurable Goals, including frequencies: Add a Sustainable Lawn Care page to the Champaign County website to educate landowners about the water quality impacts of overuse of fertilizers and pesticides in non-agricultural uses.

Milestones:

Year 1: NONE

Year 2: NONE

Year 3: NONE

Year 4: Develop and implement a Champaign County Sustainable Lawn Care web page

Year 5: Update the Champaign County Sustainable Lawn Care web page

9. Revise Milestones for BMP No. E.2.1 Require annual inspections of publicly owned storm water management facilities (post construction).

BMP No. E.2.1.

Brief Description of BMP: Require annual inspections of publicly owned storm water management facilities (post construction).

Measurable Goals, including frequencies: Procedures identified for storm water facility maintenance (post-construction) in the County SWPPP.

Milestones:

Year 1: NONE

Year 2: NONE

Year 3: ~~Develop and implement procedures in the County SWPPP.~~ **MILESTONE NOT ACHIEVED**

Year 4: Develop and implement procedures in the County SWPPP.

Year 5: Develop and implement procedures in the County SWPPP

- 10. Add new BMP No. E.3.3 Annual training in green infrastructure and/or low impact design techniques for all MS4 employees and contractors who manage or are directly involved in the routine maintenance, repair, or replacement of public exterior surfaces.**

BMP No. E.3.3.

Brief Description of BMP: Provide annual training in green infrastructure and/or low impact design techniques for all MS4 employees who manage or are directly involved in (or who retain others who manage or are directly involved in) the routine maintenance, repair, or replacement of public exterior surfaces. Require that contractors who are retained to manage or carry out the kinds of maintenance and relevant contractor employees also have annual training

Measurable Goals, including frequencies: Provide annual training in green infrastructure and/or low impact design techniques for all MS4 employees who manage or are directly involved in (or who retain others who manage or are directly involved in) the routine maintenance, repair, or replacement of public exterior surfaces. Require that contractors who are retained to manage or carry out the kinds of maintenance and relevant contractor employees also have annual training

Milestones:

Year 1: NONE

Year 2: NONE

Year 3: County Engineer Jeff Blue, Assistant County Engineer John Cooper, and Highway Maintenance Supervisor Tracy Wingler attended the Illinois Green Infrastructure Conference held at the iHotel in Urbana IL on September 15, 2017

Year 4: Training in green infrastructure and/or low impact design techniques for all MS4 employees who manage or are directly involved in (or who retain others who manage or are directly involved in) the routine maintenance, repair, or replacement of public exterior surfaces.

Year 5: Training in green infrastructure and/or low impact design techniques for all MS4 employees who manage or are directly involved in (or who retain others who manage or are directly involved in) the routine maintenance, repair, or replacement of public exterior surfaces.

Attachment B. Status Of Compliance With N.P.D.E.S. Permit Conditions for Year 3
CHAMPAIGN COUNTY, ILLINOIS MS4 ANNUAL FACILITY INSPECTION REPORT
REPORTING PERIOD YEAR 3 (4/1/16 – 3/31/17) APRIL 1, 2017

	BMP No.	Brief Description of Best Management Practice (BMP)	Status	Measurable Goal	Year 3 Milestone	Description of Activities
1	A.1.1	Flyers and information sheets at permit counter.	COMPLETE	Develop and distribute an educational handout.	Distribute handout.	Handout displayed and available at the service counter.
2	A.2.1	Inform business groups about MS4, NPDES, and BMPs upon request.	COMPLETE	Conduct one presentation per year upon request.	Conduct one presentation upon request.	No requests for presentations about MS4, NPDES and BMPs were made from business groups.
3	A.2.2	Inform developer, contractor, engineering, and architecture groups about MS4, NPDES, and BMPs.	INCOMPLETE	Conduct one presentation per year.	Conduct one presentation.	NONE
4	A.2.3	Inform agriculture community, Farm Bureau, and 4H about MS4, NPDES, and BMPs.	NO LONGER APPLICABLE-SEE BMP CHANGE			NONE
5	A.2.4	Inform environmental, conservation, and citizen groups about MS4, NPDES, and BMPs upon request.	COMPLETE	Conduct one presentation per year.	Conduct one presentation upon request.	No requests for presentations about MS4, NPDES and BMPs were made from environmental, conservation, and citizen groups.
6	A.6.1	Educational and informational material on web page.	COMPLETE	Develop web page with annual updates on informational and educational materials.	Develop web page.	Information about the Champaign County MS4 program and storm water management in general was added to the Champaign County website.
7	B.4.1	Comply with applicable state and local public notice requirements.	COMPLETE	Annual number of meetings with MS4 related topics	Provide notice of pending storm water regulatory changes and provide opportunity for public comment.	All public hearings and meetings are noticed as required by state law and local ordinances and policies.
8	B.6.1	Intergovernmental Storm Water Management group meetings	COMPLETE	Hold at least four MS4 coordination meetings year	Attend meetings	During the program year County staff attended and participated in meetings with other MS4 jurisdictions on March 8, May 20, July 12, and December 13.
9	B.7.1	Include NPDES MS4 requirements in the	COMPLETE	Include NPDES MS4	Include MS4 in work	Funding for MS4 projects

Attachment B. Status Of Compliance With N.P.D.E.S. Permit Conditions for Year 3
CHAMPAIGN COUNTY, ILLINOIS MS4 ANNUAL FACILITY INSPECTION REPORT
REPORTING PERIOD YEAR 3 (4/1/16 – 3/31/17) APRIL 1, 2017

	BMP No.	Brief Description of Best Management Practice (BMP)	Status	Measurable Goal	Year 3 Milestone	Description of Activities
		County's Land Resource Management Plan		requirements in the County's Land Resource Management Plan and include in annual long range work plan as required.	plan for FY17.	expanded in the RPC Work Plan for FY17.
10	C.1.1	Map drainage system outfalls into streams and rivers.	<i>IN PROGRESS</i>	Update as information is available and complete a system wide updated every three years.	Develop drainage system map for unincorporated MS4 Area (50% complete)	The storm sewer system map for the unincorporated Champaign County MS4 Area was mapped to 50% complete. An excerpt is attached. The webmap can be viewed on the Champaign County website (www.co.champaign.il.us) under the Department of Planning and Zoning and at the web address below: https://arcg.is/1SHanm
11	C.2.1	Prohibit illegal dumping and illicit discharges into drainage system.	<i>IN PROGRESS</i>	Review existing Nuisance Ordinance and revise Ordinance language to include illegal dumping and illicit discharges into drainage systems. Adopt a new ordinance or amend existing ordinance.	Amend ordinance with new language.	Ordinance language has been drafted regarding illegal dumping and illicit discharges into drainage systems but has not yet been adopted.

Attachment B. Status Of Compliance With N.P.D.E.S. Permit Conditions for Year 3
CHAMPAIGN COUNTY, ILLINOIS MS4 ANNUAL FACILITY INSPECTION REPORT
REPORTING PERIOD YEAR 3 (4/1/16 – 3/31/17) APRIL 1, 2017

	BMP No.	Brief Description of Best Management Practice (BMP)	Status	Measurable Goal	Year 3 Milestone	Description of Activities
12	C.3.1	Establish citizen complaint phone line for illegal dumping and illicit discharges into drainage systems.	COMPLETE	Develop and maintain complaint phone line.	Maintain complaint phone line and record of complaints.	The Department of Planning and Zoning phone line is maintained for citizen complaints regarding illegal dumping and illicit discharges.
13	C.3.2	Establish citizen complaint phone line for non-complying and/or non-functioning private sewage treatment systems	COMPLETE	Develop and maintain complaint phone line.	Maintain complaint phone line and record of complaints.	The Department of Planning and Zoning phone line is maintained for citizen complaints regarding non-complying and / or non-functioning private sewage treatment systems.
14	C.3.3	Create a database of existing private sewage treatment systems and develop management plan to bring non-compliant systems into compliance.	IN PROGRESS	Create database and develop management plan. Implement plan.	Create database and develop management plan.	Records of private sewage treatment systems obtained from Public Health Department, GIS database is under development.
15	C.6.1	Annual Report to the Environment and Land Use Committee (of the Champaign County Board) and the Champaign County Board.	COMPLETE	Present Annual Report and place on file.	Annual Report completed.	Annual Report prepared and presented to the Environment and Land Use Committee (ELUC).
16	D.1.1	Soil erosion and sediment control regulations.	COMPLETE	Review existing soil erosion and sediment control regulations. Prepare draft regulations for County Board adoption. Approve revised regulations.	Enforce soil erosion and sediment control ordinance.	Soil erosion and sediment control regulations in the Champaign County Storm Water Management and Erosion Control Ordinance were enforced for all Land Disturbance Erosion Control (LDEC) Permits.
17	D.2.1	Erosion and sediment control BMPs.	COMPLETE	Review and evaluate existing BMPs to determine which should be included in the erosion and sediment control ordinance. Review existing regulations and develop new regulations for ordinance.	Review plans and development for appropriate use of BMP's as required by adopted ordinance.	Land Disturbance Erosion (LDEC) Permits are reviewed for use of appropriate BMP's
18	D.3.1	Prohibit illegal dumping and illicit discharges into storm drainage system	IN PROGRESS	Review existing Nuisance Ordinance and revise	Review existing Nuisance Ordinance and	The Storm Water Management and Erosion Control Ordinance

Attachment B. Status Of Compliance With N.P.D.E.S. Permit Conditions for Year 3
CHAMPAIGN COUNTY, ILLINOIS MS4 ANNUAL FACILITY INSPECTION REPORT
REPORTING PERIOD YEAR 3 (4/1/16 – 3/31/17) APRIL 1, 2017

Resolution 9955

	BMP No.	Brief Description of Best Management Practice (BMP)	Status	Measurable Goal	Year 3 Milestone	Description of Activities
		from construction activities.		Ordinance language to include illegal dumping and illicit discharges into drainage systems from construction activities. Implement either a new ordinance language or amend existing Ordinance.	draft new Nuisance Ordinance language.	includes a prohibition of illegal dumping and illicit discharges from construction activities. Nuisance Ordinance language has been drafted regarding illegal dumping and illicit discharges into drainage systems but has not yet been adopted.
19	D.4.1	Develop processes and procedures to evaluate proposed construction site runoff mechanisms.	COMPLETE	Develop procedures and processes to evaluate proposed construction site runoff control mechanisms.	Implement and refine review procedures	Procedures to evaluate proposed construction site runoff mechanisms are refined in the review of LDEC Permits.
20	D.4.2	Training class or workshop for evaluating and inspecting construction site runoff control mechanisms.	COMPLETE	Zoning Officer (or Director's designee) attendance at training class or workshop for evaluating and inspecting construction site runoff control mechanisms.	Director's designee attends training.	No training occurred in Year 3.
21	D.6.1	Develop procedures and processes to inspect construction sites for compliance with construction site runoff control mechanisms.	COMPLETE	Develop procedures and processes to inspect construction sites for compliance with construction site runoff control mechanisms.	Implement and refine review procedures.	Procedures were refined as more experience was gained in the review of LDEC
22	E.2.1	Require annual inspections of publicly owned storm water management facilities (post-construction).	INCOMPLETE	Establish and implement procedures for annual inspections of publicly-owned storm water management facilities to insure they function as designed (post-construction) in the County SWPPP.	NONE	NONE
23	E.3.1	Develop procedures to insure that storm water management facilities are maintained to function as designed (post-	IN PROGRESS	Procedures identified for storm water facility maintenance (post-	NONE	The Storm Water Management and Erosion Control Ordinance requires ongoing maintenance of

Attachment B. Status Of Compliance With N.P.D.E.S. Permit Conditions for Year 3
CHAMPAIGN COUNTY, ILLINOIS MS4 ANNUAL FACILITY INSPECTION REPORT
REPORTING PERIOD YEAR 3 (4/1/16 – 3/31/17) APRIL 1, 2017

	BMP No.	Brief Description of Best Management Practice (BMP)	Status	Measurable Goal	Year 3 Milestone	Description of Activities
		construction).		construction) in the County SWPPP.		storm water management facilities.
24	E.4.1	Training class or workshop for evaluating and inspecting construction site runoff control mechanisms (post-construction).	INCOMPLETE	Zoning Officer (or Director's designee) attendance at training class or workshop for evaluating and inspecting site runoff control mechanisms (post-construction).	Director's designee attends training.	NONE
25	E.5.1	Develop procedures and processes to inspect construction sites for compliance with post-construction runoff control mechanisms.	COMPLETE	Develop procedures and processes to inspect construction sites for compliance with approved post-construction site runoff control mechanisms.	Develop and implement procedures.	The Storm Water Management and Erosion Control Ordinance requires "as-built" documentation.
26	F.1.1	Spill prevention protocol.	INCOMPLETE	Conduct annual spill prevention training with appropriate staff. Track meeting agenda, materials, and attendee sign-in sheet.	Training session completed.	NONE
27	F.1.2	Spill response protocol.	COMPLETE	Conduct annual spill response training with appropriate staff. Track meeting agenda, materials, and attendee sign-in sheet.	Training session completed.	The Champaign County Emergency Management Agency (CCEMA) conducted or participated in the following train in the program year: <ul style="list-style-type: none"> • April 2016: The Assistant Coordinator attended a conference with a spill exercise. • October 2016: A spill exercise with the University of Illinois • March 2017 the Champaign County Emergency Management Agency hosted a display bottle for training of responders regarding LP and anhydrous ammonia. Documentation of complete

Attachment B. Status Of Compliance With N.P.D.E.S. Permit Conditions for Year 3
CHAMPAIGN COUNTY, ILLINOIS MS4 ANNUAL FACILITY INSPECTION REPORT
REPORTING PERIOD YEAR 3 (4/1/16 – 3/31/17) APRIL 1, 2017

	BMP No.	Brief Description of Best Management Practice (BMP)	Status	Measurable Goal	Year 3 Milestone	Description of Activities
						training is kept in file.
28	F.1.4	Hazardous material and storage management training.	<i>COMPLETE</i>	Conduct annual hazardous material and storage management training with appropriate staff. Track meeting agenda, materials, and attendee sign-in sheet. Review licensing annually.	License review and training session completed.	All relevant hazardous materials storage and handling reviewed with Facilities Director.
29	F.2.1	Storm water Pollution Prevention Plan (SWPPP) for County owned facilities.	<i>INCOMPLETE</i>	Prepare SWPPP for all County owned facilities.	Develop the Plan.	Present the Plan for adoption.
30	F.3.1	Investigate feasibility and effectiveness of integrated, bio-detention and filtering for County campus redesign.	<i>INCOMPLETE</i>	Review and develop a feasibility plan. Update feasibility plan each year, if necessary.	None identified.	NONE

There was no information collected from April 1, 2016, through March 31, 2017.

Attachment D. N.P.D.E.S. Permit Activities for Reporting Year 4 (April 1, 2017 – March 31, 2018)
CHAMPAIGN COUNTY, ILLINOIS MS4 ANNUAL FACILITY INSPECTION REPORT
REPORTING PERIOD YEAR 3 (4/1/16 – 3/31/17) APRIL 1, 2017

BMP No.	Brief Description of Best Management Practice (BMP)	Measurable Goal	Year 3 Milestone	Year 4 Proposed Activity (4/1/17-3/31/18)
A.1.1	Flyers and information sheets at permit counter.	Develop and distribute one new educational material handout.	Distribute handout.	Distribute handout.
A.2.1	Inform business groups about MS4, NPDES, and BMPs.	Conduct one presentation per year, upon request.	Conduct one presentation, upon request.	Conduct a presentation upon request.
A.2.2	Inform developer, contractor, engineering, and architecture groups about MS4, NPDES, and BMPs.	Conduct one presentation each year.	Conduct one presentation.	Conduct one presentation.
A.2.4	Inform environmental, conservation, and citizen groups about MS4, NPDES, and BMPs upon request.	Conduct one presentation each year, upon request.	Conduct one presentation, upon request.	Conduct one presentation upon request.
A.6.1	Educational and informational material on web page.	Develop web page with annual updates on informational and educational materials.	Develop web page.	Post Annual MS4 Report to County website.
B.4.1	Comply with applicable State and local public notice requirements.	Annual number of meetings with MS4 related topics. Maintain electronic records of notices, agendas, and public participation.	Provide notice of pending stormwater regulatory changes and provide opportunity for public comment.	Post meeting announcements as required by law.
B.6.1	Intergovernmental Storm Water Management group meetings (coordination meetings for all Champaign County MS4 jurisdictions)	Hold at least four MS4 coordination meetings each year.	Attend meetings.	Attend MS4 meetings.
B.6.2	Prepare a storm water survey that can be used to capture public comment on the MS4 Storm Water Program	Prepare a storm water survey that can be used to capture annual public comment on the Champaign County Unincorporated MS4 Area Storm Water Program.	Develop and test the Champaign County Unincorporated MS4 Area Storm Water Survey	Make the Champaign County Unincorporated MS4 Area Storm Water Survey available on the Champaign County website.
B.6.3	Hold Annual Public Storm Water Meeting at the Champaign County Board Environment and Land Use Committee (ELUC) Meeting to receive public comments regarding the Champaign County Unincorporated MS4 Area Storm Water Program.	Have the Champaign County Unincorporated MS4 Area Storm Water Program as an Agenda item at one ELUC Meeting each year.	Storm water management in the Wilbur Heights Subdivision (an Environmental Justice area) was discussed at the August 4, 2016, meeting of the	Hold a public meeting to receive public comments regarding the Champaign County Unincorporated MS4 Area Storm Water Program at the March 2018 regular meeting of the Champaign County Board's Environment and Land Use Committee (ELUC). Public comments

Attachment D. N.P.D.E.S. Permit Activities for Reporting Year 4 (April 1, 2017 – March 31, 2018) CHAMPAIGN COUNTY, ILLINOIS MS4 ANNUAL FACILITY INSPECTION REPORT REPORTING PERIOD YEAR 3 (4/1/16 – 3/31/17) APRIL 1, 2017				
BMP No.	Brief Description of Best Management Practice (BMP)	Measurable Goal	Year 3 Milestone	Year 4 Proposed Activity (4/1/17-3/31/18)
			Champaign County Board Environment and Land Use Committee	will include (a) comments received from the April 2017 random sample survey of Champaign County Unincorporated MS4 Area Environmental Justice (EJ) Areas; (h) comments received from respondents of the Champaign County Unincorporated MS4 Area Storm Water Survey available on the Champaign County website during the period 4/1/17 through 3/1/18; and (c) comments made by public participation at the Public Meeting in March 2018. All public comments received in regards to the Champaign County Unincorporated MS4 Area Storm Water Program during Year 4 will be reported in the Annual Facility Inspection Report for Year 4.
B.6.4	Identify Environmental Justice areas within the Champaign County Unincorporated MS4 Area and include appropriate public participation.	Identify Environmental Justice (EJ) areas within the Champaign County Unincorporated MS4 Area and update EJ Areas annually based on the most current US Census information and randomly sample the EJ area population for storm water concerns using the Champaign County Unincorporated MS4 Area Storm Water Survey with a postage-paid reply envelope. Review the survey results at the next Annual Public Storm Water Meeting held at a meeting of the Champaign County Board's Environment and Land Use Committee (ELUC).	Environmental Justice (EJ) areas within the Champaign County Unincorporated MS4 Area were identified using the most current data from the U.S. Census Bureau's American Community Survey and in March 2017 the Draft Champaign County Unincorporated MS4 Area Storm Water Survey with a postage-paid reply envelope was tested on a small sample of the EJ area population.	In April 2017 a random sample survey of the EJ population was conducted using the Champaign County Unincorporated MS4 Area Storm Water Survey with a postage-paid reply envelope. The results of that survey will be reviewed at the March 2018 meeting of the Champaign County Board's Environment and Land Use Committee (ELUC) and reported in the Annual Facility Inspection Report for Year 4.

Attachment D. N.P.D.E.S. Permit Activities for Reporting Year 4 (April 1, 2017 – March 31, 2018)
CHAMPAIGN COUNTY, ILLINOIS MS4 ANNUAL FACILITY INSPECTION REPORT
REPORTING PERIOD YEAR 3 (4/1/16 – 3/31/17) APRIL 1, 2017

BMP No.	Brief Description of Best Management Practice (BMP)	Measurable Goal	Year 3 Milestone	Year 4 Proposed Activity (4/1/17-3/31/18)
B.7.1	Fund aspects of NPDES MS4 implementation in the County's Land Resource Management Plan implementation budget including public involvement when appropriate.	Include NPDES MS4 requirements in the County's Land Resource Management Plan and include in annual long range work plan as required.	Include MS4 in work plan for FY17	Include MS4 in work plan for FY18
C.1.1	Map drainage system out falls into streams and rivers.	Update as information is available and complete a system wide update every 3 years.	Develop drainage system map for unincorporated MS4 Area (50% completion)	(1) Develop drainage system map for unincorporated MS4 Area (100% completion) by 12/31/17. (2) Maintain drainage system map for unincorporated MS4 Area. (3) Develop drainage system map for County Highway system outside of MS4 Area (20% completion).
C.2.1	Prohibit illegal dumping and illicit discharges into drainage systems through nuisance ordinance.	Review existing Nuisance Ordinance and revise Ordinance to include illegal dumping and illicit discharges into drainage systems. Adopt a new Ordinance or amend existing Ordinance.	Enforce amended Nuisance Ordinance. MILESTONE NOT ACHIEVED	REVISED. SEE BMP CHANGE: Amend Nuisance Ordinance with new illicit discharge language.
C.3.1	Establish citizen complaint phone line for illegal dumping and illicit discharges into drainage systems.	Develop and maintain phone line.	Maintain complaint phone line and record of complaints.	Maintain complaint phone line and record of complaints.
C.3.2	Establish citizen complaint phone line for non-complying and/or non-functioning private sewage treatment systems	Develop and maintain complaint phone line.	Maintain complaint phone line and record of complaints.	Maintain complaint phone line and record of complaints.
C.3.3	Create a database of existing private sewage treatments systems and develop management plan to bring non-compliant systems into compliance.	Create database and develop and adopt management plan. Implement management plan.	Create database and develop management plan.	Create database and develop management plan.
C.6.1	Annual report to the Environment and Land Use Committee of the Champaign County Board.	Present Annual Report and place on file.	Annual report completed	Complete annual report.

Attachment D. N.P.D.E.S. Permit Activities for Reporting Year 4 (April 1, 2017 – March 31, 2018) CHAMPAIGN COUNTY, ILLINOIS MS4 ANNUAL FACILITY INSPECTION REPORT REPORTING PERIOD YEAR 3 (4/1/16 – 3/31/17) APRIL 1, 2017				
BMP No.	Brief Description of Best Management Practice (BMP)	Measurable Goal	Year 3 Milestone	Year 4 Proposed Activity (4/1/17-3/31/18)
D.1.1	Soil Erosion and Sediment Control regulations.	Review existing erosion and sediment control regulations. Prepare draft regulations for County Board adoption. Approve revised regulations.	Enforce Soil Erosion and Sediment Control regulations.	Enforce Soil Erosion and Sediment Control regulations.
D.2.1	Erosion and Sediment Control BMPs.	Review and evaluate existing BMPs to determine which should be included in the erosion and sediment control ordinance. Review existing regulations and develop new regulations for the ordinance.	Review plans and development for appropriate use of BMPs as required by adopted ordinance and/or policy	Review Land Disturbance Erosion (LDEC) Permits for use of appropriate BMP's
D.3.1	Prohibit illegal dumping and illicit discharges into storm drainage system from construction activities.	Review existing Nuisance Ordinance and revise Ordinance language to include illegal dumping and illicit discharges into drainage systems from construction activities. Implement either a new Ordinance or amend existing Ordinance.	Amend or adopt Nuisance Ordinance with updates. MILESTONE NOT ACHIEVED	REVISED. SEE BMP CHANGE: Amend Nuisance Ordinance with new illicit discharge language
D.4.1	Develop procedures and processes to evaluate proposed construction site runoff mechanisms.	Develop procedures and processes to evaluate proposed construction site runoff mechanisms.	Implement and refine review procedures.	Implement and refine review procedures.
D.4.2	Training class/ workshop for evaluating and inspecting construction site runoff control mechanism.	Zoning Officer (or Director's designee) attendance at training class or workshop for evaluating and inspecting construction site runoff control mechanisms.	Director's designee attends training.	Director's designee attends training.
D.6.1	Develop procedures and processes to inspect construction sites for compliance with construction site runoff control mechanisms.	Develop procedures and processes to inspect construction sites for compliance with construction site runoff control mechanisms.	Implement and refine review procedures.	Implement and refine review procedures.
E.1.1	Implement a public education program about the benefits of green infrastructure and green housekeeping in minimizing the volume of storm water runoff and pollutants from existing privately owned developed property.	Add a Green Infrastructure page to the Champaign County website to educate landowners about the benefits of green infrastructure and green housekeeping in minimizing the volume of storm water runoff and	NONE	Develop and implement a Champaign County Green Infrastructure & Green Housekeeping web page

Attachment D. N.P.D.E.S. Permit Activities for Reporting Year 4 (April 1, 2017 – March 31, 2018) CHAMPAIGN COUNTY, ILLINOIS MS4 ANNUAL FACILITY INSPECTION REPORT REPORTING PERIOD YEAR 3 (4/1/16 – 3/31/17) APRIL 1, 2017				
BMP No.	Brief Description of Best Management Practice (BMP)	Measurable Goal	Year 3 Milestone	Year 4 Proposed Activity (4/1/17-3/31/18)
		pollutants from existing privately owned developed property.		
E.1.2	Implement a public education program about the water quality impacts of overuse of fertilizers and pesticides in non-agricultural uses.	Add a Sustainable Lawn Care page to the Champaign County website to educate landowners about the water quality impacts of overuse of fertilizers and pesticides in non-agricultural uses.	NONE	Develop and implement a Champaign County Sustainable Lawn Care web page
E.2.1	Require annual inspection of publicly-owned storm water management facilities (post- construction).	Establish and implement procedures for annual inspections of publicly-owned storm water management facilities to ensure facilities function as designed (post-construction) in the County SWPPP.	Develop and implement procedures in the County SWPPP. MILESTONE NOT ACHIEVED	REVISED. SEE BMP CHANGE: Develop and implement procedures in the County SWPPP
E.3.1	Develop procedures to ensure that storm water facilities are maintained to function as designed (post- construction).	Procedures identified for storm water facility maintenance (post-construction) in the County SWPPP.	Develop and implement procedures in the County SWPPP.	Develop and implement procedures in the County SWPPP.
E.4.1	Training class or workshop for evaluating and inspecting site runoff control mechanisms (post-construction).	Zoning Officer (or Director's designee) attendance at training class or workshop for evaluating and inspecting site runoff control mechanisms (post-construction).	Director's designee attends training.	Director's designee attends training.
E.5.1	Develop procedures and processes to inspect construction sites for compliance with runoff control mechanisms.	Develop procedures and processes to inspect construction sites for compliance with approved post-construction site runoff control mechanisms.	Develop and implement procedures.	Develop and implement procedures
F.1.1	Spill prevention protocol	Conduct annual spill prevention training with appropriate County staff. Track with meeting agenda, materials, and attendee sign-in sheet.	Training session completed.	Training session completed.
F.1.2	Spill response protocol	Conduct annual spill response training with appropriate County staff. Track with meeting agenda, materials and attendee sign-in sheet.	Training session completed.	Training session completed.

Attachment D. N.P.D.E.S. Permit Activities for Reporting Year 4 (April 1, 2017 – March 31, 2018) CHAMPAIGN COUNTY, ILLINOIS MS4 ANNUAL FACILITY INSPECTION REPORT REPORTING PERIOD YEAR 3 (4/1/16 – 3/31/17) APRIL 1, 2017				
BMP No.	Brief Description of Best Management Practice (BMP)	Measurable Goal	Year 3 Milestone	Year 4 Proposed Activity (4/1/17-3/31/18)
F.1.4	Hazardous material and storage management training.	Conduct annual hazardous material and storage management training with appropriate County staff. Track with meeting agenda, materials and attendee sign-in sheet. Review licensing annually.	License review and training session completed.	Complete a training session with appropriate staff and review relevant licenses.
F.2.1	Prepare a Stormwater Pollution Prevention Plan (SWPPP) for County owned facilities.	Prepare SWPPP for all County owned facilities.	Develop the plan.	Present the plan for adoption.
F.3.1	Investigate feasibility and effectiveness of integrated bio-detention and filtering for County campus redesign.	Review and develop a feasibility plan. Update feasibility plan each year, if necessary.	None identified.	None identified.

DATE: February 3, 2017

TO: Environment and Land Use Committee

FROM: Susan Monte and Kathleen Oldrey, Planners
John Hall, Champaign County MS4 Coordinator

RE: Champaign County MS4 Storm Water Management Program Identification of
Environmental Justice Areas

ACTION
REQUESTED: For Information Only

Champaign County MS4 Storm Water Management Program Background

Last June, John Hall informed ELUC members about the new requirements for the Champaign County MS4 Storm Water Management Program that became effective on March 1, 2016.

A priority item of the 2017 RPC-Champaign County Planning Contract is to identify environmental justice (EJ) areas as specified by the effective General NPDES Permit No. ILR40 for the Champaign County MS4 Storm Water Management Program. This memorandum provides information about the methods used to determine EJ areas that exist within the Champaign County MS4 jurisdiction.

Environmental Justice Requirement

Part IV.B.2.d of the new General NPDES Permit No. ILR40 effective 3/1/16 contains the following 'Environmental Justice' requirement:

"The permittee shall identify environmental justice areas within its jurisdiction and include appropriate public involvement/participation. Information on environmental justice concerns may be found at <http://www.epa.gov/environmentaljustice/>. This requirement may be met in conjunction with or as part of a regular council or board meeting."

The new General NPDES Permit No. ILR40 effective 3/1/16 contains the following defined terms¹

- "Environmental Justice (EJ)" means the fair treatment and meaningful involvement of all people regardless of race, color, national origin, or income with respect to the development, implementation, and enforcement of environmental laws, regulations, and policies.
- "Environmental Justice Area" means a community with a low-income and/or minority population greater than twice the statewide average.² If the low-income and/or minority population percentage is equal to or less than the statewide average, the community should not be considered a potential EJ community.

Identification of EJ Areas in Champaign County MS4 Areas

We used the defined terms from the General NPDES to identify EJ areas within the Champaign County MS4 jurisdiction. Attachment A describes the assumptions made and process utilized, based on the definitions provided (shown above).

Attachment B contains spreadsheet data with additional detail specific to each U.S. Census Block Group situated within the Champaign County MS4 jurisdiction.

Attachment C is a series of five maps, including an overview map of the identified EJ areas within the Champaign County MS4 jurisdiction, and four close-up maps of the identified EJ areas within the Champaign County MS4 jurisdiction.

A pdf copy of each of Attachment B and C will be available on the Champaign County P&Z webpage.

Attachments:

- A** Champaign County MS4 EJ Areas Map Evaluation: Assumptions and Process
- B** Spreadsheet of EJ data based on U.S. Census Block Groups
- C** Champaign County MS4 Map Series with Identified Environmental Justice Areas as defined by General NPDES Permit No. ILR40 effective 3/1/16

Notes:

1. The General NPDES Permit No. ILR40 Part IV. Definitions and Acronyms contain the following qualifier: "All definition contained in Section 502 of the Clean Water Act, 40 CFR 122, and 35 Ill. Adm. Code 309 shall apply to this permit and are incorporated herein by reference. For convenience, simplified explanations of some regulatory/statutory definitions have been provided. In the event of a conflict, the definition found in the statute or regulation takes precedence.

2. The definition for 'Environmental Justice Area' includes the additional provision that "... a community may be considered a potential EJ community if the low-income and/or minority population is less than twice the state-wide average but greater than the statewide average and it has identified itself as an EJ community."

MS4 Environmental Justice Areas Map Evaluation: Assumptions and Process

Assumptions

- The term "low-income" was assumed to mean "below the poverty line."
- The term "statewide average" was assumed to mean the state poverty rate and population percentages.
- Margins of error were disregarded for the purposes of these calculations, and may impact some results.

Process

1. Downloaded, calculated, and arrayed poverty and demographic data for block groups in which Champaign County's MS4 areas are located.
2. Compared each block group of interest with the state of Illinois, in the dimensions of poverty rate, % black or African American, % American Indian or Alaska Native, % Asian, % Native Hawaiian or Other Pacific Islander, % Some other race, % Two or more races, and % Hispanic or Latino origin.
3. In each of the above dimensions, assigned each block group to a category based on the given definition of EJ area: block groups with a rate or percentage equal to or less than the statewide average (not qualifying as EJ areas), block groups with a rate or percentage greater than but not double the statewide average (able to self-identify as EJ areas), and block groups with a rate or percentage double or more than the statewide average (qualifying as EJ areas).
4. Assessed each block group individually, based on its assigned categories.
 - a. Block groups categorized as having rates or percentages that are double or more than the statewide average in one or more of the assessed dimensions were identified as EJ areas.
 - b. Block groups categorized as having rates and percentages equal to or less than the statewide average in all dimensions were identified as not being EJ areas.
 - c. Block groups categorized as having no dimensions with rates or percentages that are double or greater than the statewide average, but with one or more of the assessed dimensions with a rate or percentage greater but not double the statewide average, were identified as having the ability to self-identify as an EJ area.

Data Sources

U.S. Census Bureau; American Community Survey, 2011-2015 American Community Survey 5-Year Estimates, Table B17017; generated by CCRPC staff; using American FactFinder; <<http://factfinder2.census.gov>>; (25 January 2017).

U.S. Census Bureau; American Community Survey, 2011-2015 American Community Survey 5-Year Estimates, Table B02001; generated by CCRPC staff; using American FactFinder; <<http://factfinder2.census.gov>>; (25 January 2017).

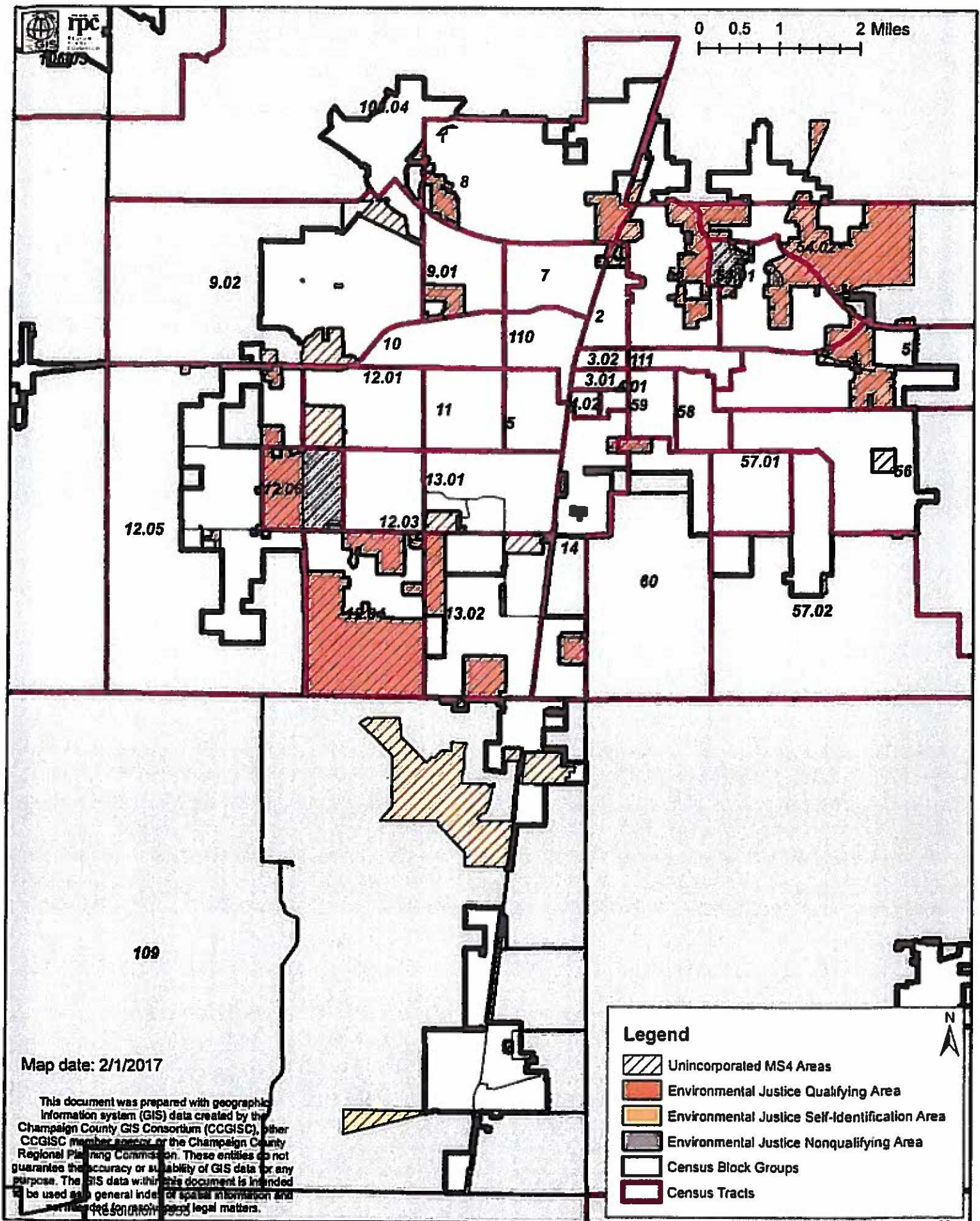
U.S. Census Bureau; American Community Survey, 2011-2015 American Community Survey 5-Year Estimates, Table B03003; generated by CCRPC staff; using American FactFinder; <<http://factfinder2.census.gov>>; (25 January 2017).

	Poverty Rate	Black or African American alone	NAAM alone	Asian alone	NHopi alone	Some other race alone	Two or more races	Hispanic or Latino origin
White								
Population %	13.4%	14.3%	0.2%	5.0%	0.026%	5.8%	2.2%	16.5%
Relation to State Rate	Equal to	Equal to	Equal to	Equal to	Equal to	Equal to	Equal to	Equal to
EJ Area?	N/A	N/A	N/A	N/A	N/A	N/A	N/A	N/A
Black								
Population %	22.8%	25.8%	0.0%	3.5%	0.000%	0.0%	0.0%	6.4%
Relation to State Rate	Greater than, not double	Greater than, not double	Less than	Less than	Less than	Less than	Less than	Less than
EJ Area?	Can self-identify	Can self-identify	No	No	No	No	No	No
Latino								
Population %	21.4%	15.3%	0.0%	1.5%	0.000%	0.0%	2.3%	2.3%
Relation to State Rate	Greater than, not double	Greater than, not double	Less than	Less than	Less than	Less than	Greater than, not double	Greater than, not double
EJ Area?	Can self-identify	Can self-identify	No	No	No	No	Can self-identify	Can self-identify
Asian								
Population %	16.0%	25.8%	0.0%	0.0%	0.000%	1.0%	4.2%	24.3%
Relation to State Rate	Less than	Greater than, not double	Less than	Less than	Less than	Less than	Greater than, not double	Less than
EJ Area?	No	Can self-identify	No	No	No	No	Can self-identify	No
Native Hawaiian								
Population %	24.8%	0.0%	0.0%	0.0%	0.000%	0.0%	0.0%	1.4%
Relation to State Rate	Greater than, not double	Less than	Less than	Less than	Less than	Less than	Less than	Less than
EJ Area?	Can self-identify	Can self-identify	No	No	No	No	No	No
Other								
Population %	14.8%	17.3%	0.0%	9.2%	0.000%	0.0%	2.4%	1.8%
Relation to State Rate	Less than	Greater than, not double	Less than	Greater than, not double	Less than	Less than	Greater than, not double	Less than
EJ Area?	No	Can self-identify	No	Can self-identify	No	No	Can self-identify	No
Treat 9.02, Black Group 1								
Population %	14.8%	14.8%	0.0%	3.0%	0.000%	1.4%	0.0%	5.4%
Relation to State Rate	Greater than, not double	Equal to	Less than	Less than	Less than	Less than	Less than	Less than
EJ Area?	Can self-identify	No	No	No	No	No	No	No
Treat 9.02, Black Group 2								
Population %	17.4%	2.8%	0.0%	3.0%	0.000%	0.0%	3.5%	1.3%
Relation to State Rate	Greater than, not double	Less than	Less than	Less than	Less than	Less than	Greater than, not double	Less than
EJ Area?	Can self-identify	No	No	No	No	No	Can self-identify	No
Treat 12.01, Black Group 1								
Population %	13.0%	0.0%	0.0%	6.3%	0.000%	3.8%	0.0%	8.4%
Relation to State Rate	Less than	Less than	Less than	Greater than, not double	Less than	Less than	Less than	Less than
EJ Area?	No	No	No	Can self-identify	No	No	No	No
Treat 12.01, Black Group 2								
Population %	28.3%	0.0%	0.0%	0.0%	0.000%	3.8%	1.8%	4.0%
Relation to State Rate	Greater than, not double	Less than	Less than	Less than	Less than	Less than	Less than	Less than
EJ Area?	Can self-identify	Can self-identify	No	No	No	No	No	No

	Poverty Rate	Black or African American alone	Asian alone	Hispanic alone	Same other race alone	Two or more races	Hispanic or Latino origin
Population %	12.2%	1.0%		0.000%	0.0%	2.2%	2.0%
Relation to State Rate	Less than	Less than		Less than	Less than	Equal to	Less than
EJ Area?	No	No		No	No	No	No
Population %	12.6%	6.5%	0.0%	0.000%	0.0%	0.0%	0.0%
Relation to State Rate	Less than	Less than	Less than	Less than	Less than	Less than	Less than
EJ Area?	No	No	No	No	No	No	No
Population %	18.2%	18.2%	0.0%	0.000%	0.0%	2.5%	0.0%
Relation to State Rate	Greater than, not double	Greater than, not double	Less than	Less than	Less than	Greater than, not double	Less than
EJ Area?	Can self-identify	Can self-identify	No	No	No	Can self-identify	No
Population %	2.0%	2.0%	0.0%	0.000%	0.0%	0.0%	0.0%
Relation to State Rate	Less than	Less than	Less than	Less than	Less than	Less than	Less than
EJ Area?	No	No	No	No	No	No	No
Population %	0.0%	0.0%	0.0%	0.000%	0.0%	0.0%	0.0%
Relation to State Rate	Less than	Less than	Less than	Less than	Less than	Less than	Less than
EJ Area?	No	No	No	No	No	No	No
Population %	0.0%	0.0%	0.0%	0.000%	0.0%	0.0%	0.0%
Relation to State Rate	Less than	Less than	Less than	Less than	Less than	Less than	Less than
EJ Area?	No	No	No	No	No	No	No
Population %	10.0%	7.9%	0.0%	0.000%	0.0%	0.0%	0.0%
Relation to State Rate	Less than	Less than	Less than	Less than	Less than	Less than	Less than
EJ Area?	No	No	No	No	No	No	No
Population %	9.5%	9.5%	0.0%	0.000%	0.0%	2.5%	0.0%
Relation to State Rate	Less than	Less than	Less than	Less than	Less than	Equal to	Less than
EJ Area?	No	No	No	No	No	No	No
Population %	6.0%	3.4%	0.0%	0.000%	0.0%	0.0%	0.0%
Relation to State Rate	Less than	Less than	Less than	Less than	Less than	Less than	Less than
EJ Area?	No	No	No	No	No	No	No
Population %	18.3%	18.3%	0.0%	0.000%	0.0%	0.0%	0.0%
Relation to State Rate	Greater than, not double	Less than	Less than	Less than	Less than	Less than	Less than
EJ Area?	Can self-identify	No	No	No	No	No	No

	Poverty Rate	Black or African American alone	AAWH alone	Asian alone	NH/PI alone	Some other race alone	Two or more races	Hispanic or Latino origin
Group 1: White								
Population %								
Relation to State Rate	10.8%	Less than	0.0%	Less than	0.000%	0.0%	2.0%	4.4%
EJ Area?	No	No	No	No	No	No	Greater than, not double	Less than
Can self-identify							Can self-identify	No
Group 2: Black or African American								
Population %	17.1%		0.0%	0.0%	0.000%	0.0%		0.0%
Relation to State Rate	Greater than, not double	Less than	Less than	Less than	Less than	Less than		Less than
EJ Area?	Can self-identify	No	No	No	No	No		No
Group 3: Hispanic or Latino								
Population %		26.7%	0.0%	0.0%	0.000%	0.0%	0.0%	0.0%
Relation to State Rate	Greater than, not double	Less than	Less than	Less than	Less than	Less than	Less than	Less than
EJ Area?	Can self-identify	Can self-identify	No	No	No	No	No	No
Group 4: Asian or Pacific Islander								
Population %			0.0%	0.0%	0.000%	0.0%	3.4%	11.5%
Relation to State Rate	Greater than, not double	Less than	Less than	Less than	Less than	Less than	Greater than, not double	Less than
EJ Area?	Can self-identify	No	No	Can self-identify	No	No	Can self-identify	No
Group 5: American Indian or Alaska Native								
Population %	0.0%	0.0%	0.0%	0.0%	0.000%	0.0%	0.0%	0.0%
Relation to State Rate	Less than	Less than	Less than	Less than	Less than	Less than	Less than	Less than
EJ Area?	No	No	No	No	No	No	No	No
Group 6: Native Hawaiian or Other Pacific Islander								
Population %		0.1%	0.0%	0.0%	0.000%	0.0%	0.0%	0.0%
Relation to State Rate	Less than	Less than	Less than	Less than	Less than	Less than	Less than	Less than
EJ Area?	No	No	No	No	No	No	No	No
Group 7: Two or more races								
Population %	14.6%	6.4%	0.0%	0.0%	0.000%	6.1%	0.0%	7.4%
Relation to State Rate	Greater than, not double	Less than	Less than	Less than	Less than	Greater than, not double	Less than	Less than
EJ Area?	Can self-identify	No	No	Can self-identify	No	Can self-identify	No	No
Group 8: White, Black, or Asian								
Population %		0.0%	0.0%	0.0%	0.000%	0.0%	0.0%	0.0%
Relation to State Rate	Less than	Less than	Less than	Less than	Less than	Less than	Less than	Less than
EJ Area?	No	No	No	No	No	No	No	No
Group 9: White, Black, or Asian, American Indian or Alaska Native								
Population %	10.0%	16.1%	0.0%	0.0%	0.000%	0.0%	0.0%	0.0%
Relation to State Rate	Less than	Less than	Less than	Less than	Less than	Less than	Less than	Less than
EJ Area?	No	No	No	No	No	No	No	No
Group 10: White, Black, or Asian, American Indian or Alaska Native, Native Hawaiian or Other Pacific Islander								
Population %	20.0%	5.0%	0.0%	0.0%	0.000%	4.5%	0.0%	12.4%
Relation to State Rate	Less than	Less than	Less than	Less than	Less than	Less than	Less than	Less than
EJ Area?	No	No	No	No	No	No	No	No
Group 11: White, Black, or Asian, American Indian or Alaska Native, Native Hawaiian or Other Pacific Islander, Two or more races								
Population %	12.0%	6.0%	0.0%	0.0%	0.000%	0.0%	0.0%	0.0%
Relation to State Rate	Greater than, not double	Less than	Less than	Less than	Less than	Less than	Less than	Less than
EJ Area?	Can self-identify	No	No	No	No	No	No	No
Group 12: White, Black, or Asian, American Indian or Alaska Native, Native Hawaiian or Other Pacific Islander, Two or more races, Hispanic or Latino								
Population %	12.4%	0.0%	0.0%	0.0%	0.000%	0.0%	0.0%	0.0%
Relation to State Rate	Less than	Less than	Less than	Less than	Less than	Less than	Less than	Less than
EJ Area?	No	No	No	No	No	No	No	No
Group 13: White, Black, or Asian, American Indian or Alaska Native, Native Hawaiian or Other Pacific Islander, Two or more races, Hispanic or Latino, Two or more races								
Population %	23.5%		0.0%	0.0%	0.000%	0.0%	3.2%	1.0%
Relation to State Rate	Greater than, not double	Less than	Less than	Less than	Less than	Less than	Greater than, not double	Less than
EJ Area?	Can self-identify	No	No	No	No	No	Can self-identify	No

Source: U.S. Census Bureau; American Community Survey, 2011–2015 American Community Survey 5-Year Estimates, Table B17017, generated by CDRP staff, using AmericanFaciIndex; <http://factfinder2.census.gov>; [25 January 2017].
Source: U.S. Census Bureau; American Community Survey, 2011–2015 American Community Survey 5-Year Estimates, Table B02001, generated by CDRP staff, using AmericanFaciIndex; <http://factfinder2.census.gov>; [25 January 2017].
Source: U.S. Census Bureau; American Community Survey, 2011–2015 American Community Survey 5-Year Estimates, Table B03001, generated by CDRP staff, using AmericanFaciIndex; <http://factfinder2.census.gov>; [25 January 2017].



MS4 Environmental Justice Areas: Unincorporated Champaign County, Champaign Area Detailed Map

Attachment C

0 0.25 0.5 1 Miles

Legend

-  Unincorporated MS4 Areas
-  Environmental Justice Self-Identification Area
-  Environmental Justice Nonqualifying Area
-  Environmental Justice Qualifying Area
-  Census Block Groups
-  Census Tracts



Map date: 2/1/2017

106.04

Block Group 1

Block Group 1

Block Group 1

Block Group 2

9.01

9.02

Block Group 1

12.05

Block Group 2

Block Group 1

12.01

Block Group 2

This document was prepared with geographic information system (GIS) data created by the Champaign County GIS Consortium (CCGIS), other CCGIS member agency, or the Champaign County Regional Planning Commission. These entities do not guarantee the accuracy or suitability of GIS data for any purpose. The GIS data within this document is intended to be used as a general index of spatial information and not intended for resolution of legal matters.



Resolution 9955

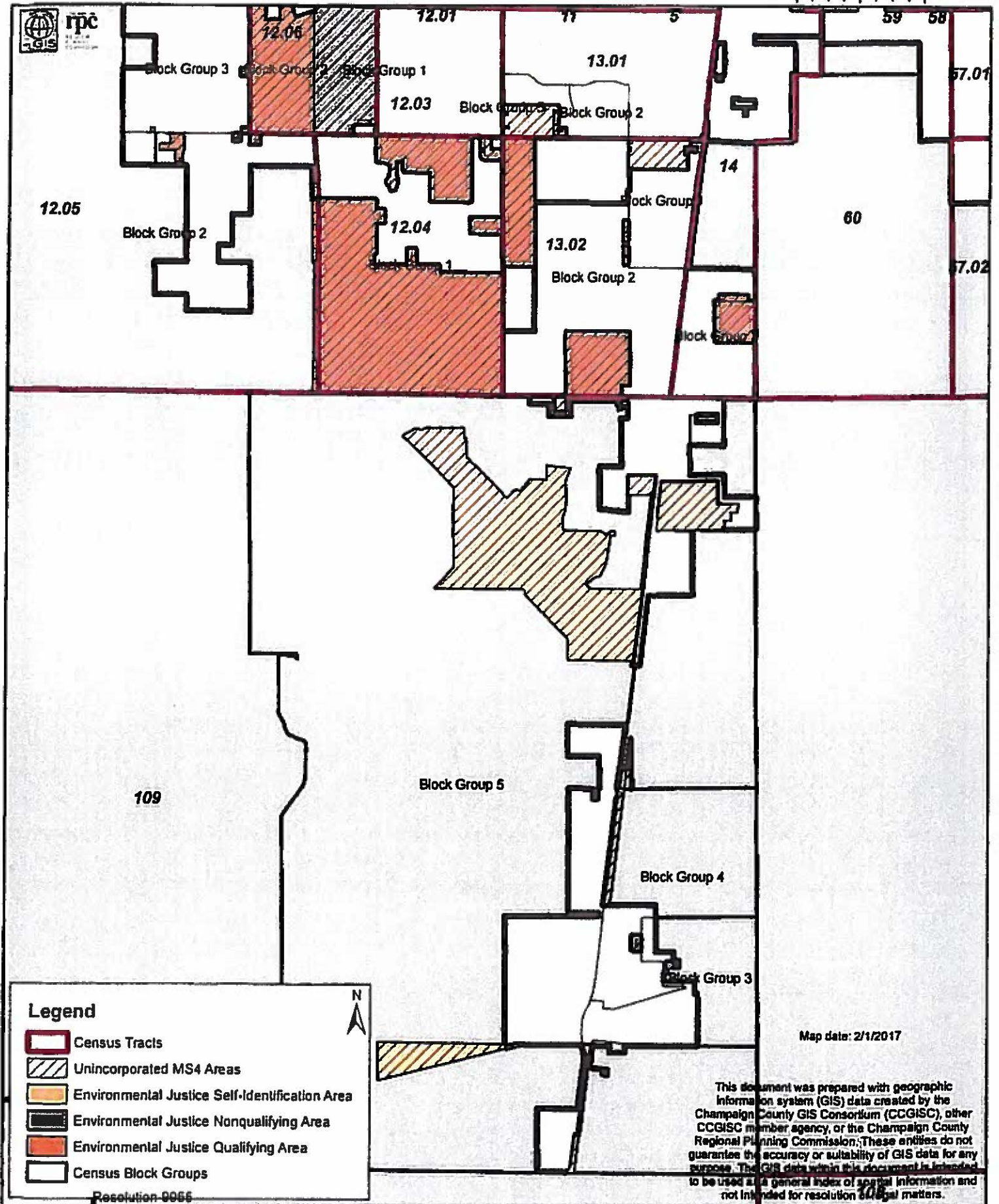
12.0

12.03

MS4 Environmental Justice Areas: Unincorporated Champaign County, Savoy Area Detailed Map

Attachment C

0 0.25 0.5 1 Miles

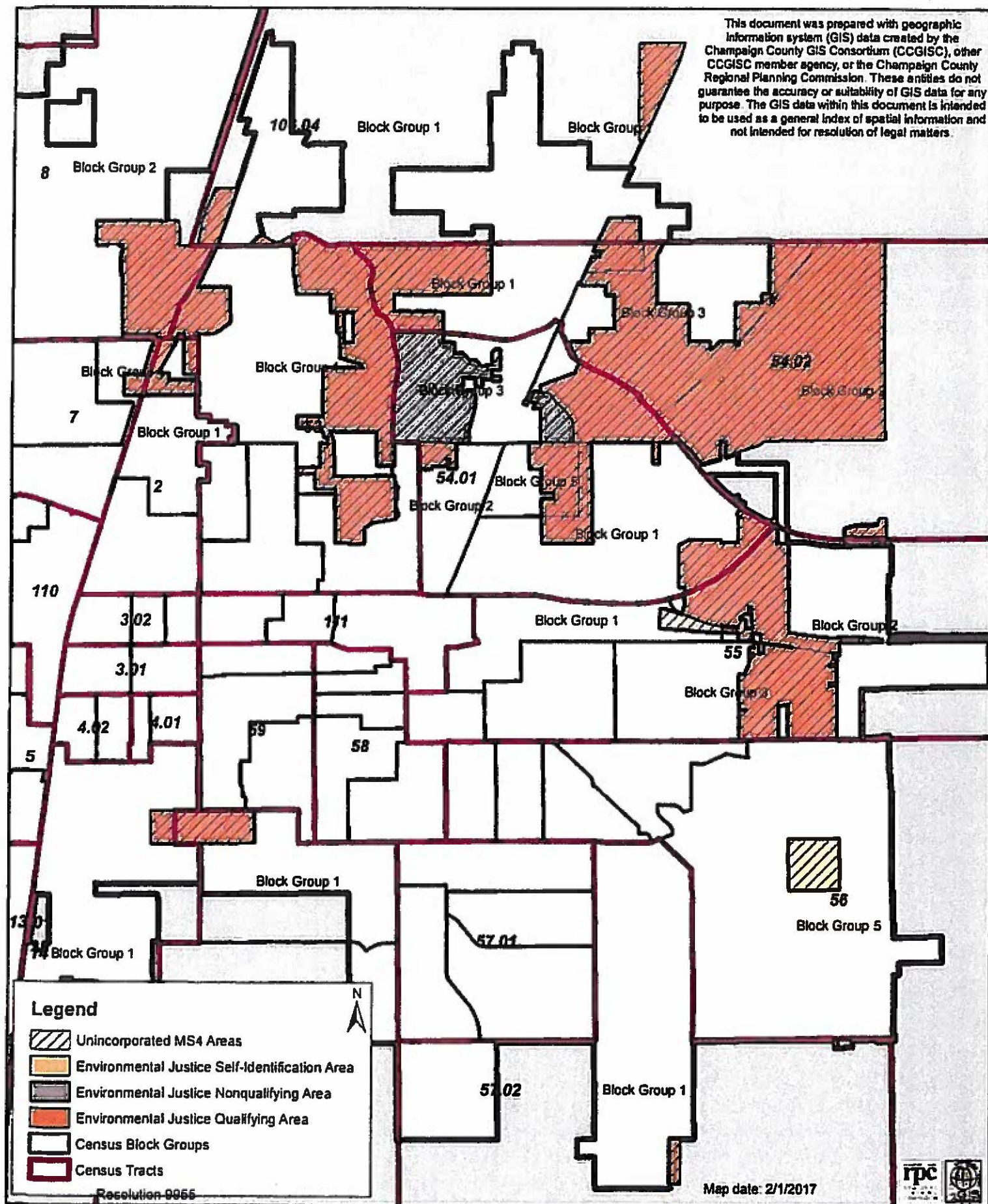


MS4 Environmental Justice Areas: Unincorporated Champaign County Urbana Area Detailed Map

Attachment C

0 0.25 0.5 1 Miles

This document was prepared with geographic information system (GIS) data created by the Champaign County GIS Consortium (CCGIS), other CCGIS member agency, or the Champaign County Regional Planning Commission. These entities do not guarantee the accuracy or suitability of GIS data for any purpose. The GIS data within this document is intended to be used as a general index of spatial information and not intended for resolution of legal matters.



MS4 Environmental Justice Areas: Unincorporated Champaign County

Bondville Area Detailed Map

Attachment C



Legend

- Census Tracts
- Unincorporated MS4 Areas
- Environmental Justice Self-Identification Area
- Environmental Justice Nonqualifying Area
- Environmental Justice Qualifying Area
- Census Block Groups

N

Block Group 1 9.02

Block Group 2 108.04

Block Group 2 12.05

Block Group 3

Map date: 2/1/2017

This document was prepared with geographic information system (GIS) data created by the Champaign County GIS Consortium (CCGIS), other CCGISC member agency, or the Champaign County Regional Planning Commission. These entities do not guarantee the accuracy or suitability of GIS data for any purpose. The GIS data within this document is intended to be used as a general index of spatial information and not intended for resolution of legal matters.

Champaign County MS4 Area Storm Water Survey

The purpose of this survey is to identify citizen concerns related to storm water within the Champaign County MS4 Area. The attached map at the end of this survey identifies the Champaign County MS4 Area and the larger Urbanized Area.

This survey is conducted as part of the Champaign County Municipal Separate Storm Sewer System (MS4) Storm Water Program, as required by the National Pollutant Discharge Elimination System (NPDES) Storm Water Program administered by the Illinois Environmental Protection Agency. Any resident of Champaign County may participate in this survey. However, we ask that you submit only one completed survey.

Please complete and return the survey as soon as possible. For your convenience, we include a postage-paid return envelope.

If you have a question about the Champaign County MS4 Storm Water Program or this survey, please contact the Department of Planning and Zoning at 217-384-3708 or ZoningDept@co.champaign.il.us.

Si desea recibir una copia en Español de esta misma encuesta, por favor póngase en contacto con el Departamento de Planificación y Zonificación (teléfono 217-384-3708 o correo electrónico: ZoningDept@co.champaign.il.us).

1.	a. Is there a location in the Champaign County MS4 Area or Urbanized Area where you believe storm water drainage causes a problem during or after a rain event?	<input type="checkbox"/> Yes <input type="checkbox"/> No
	b. If you answered 'YES,' please describe that location or indicate the nearest street intersection: _____	
	c. If you answered 'YES,' please indicate the type of problem caused by storm water drainage at the location above. Check all that apply:	
	<input type="checkbox"/> Storm water that causes property damage by flooding a building(s) during:	<input type="checkbox"/> any rain <input type="checkbox"/> large rain events
	<input type="checkbox"/> Storm water in the street that seems to interfere with traffic during:	<input type="checkbox"/> any rain <input type="checkbox"/> large rain events
	<input type="checkbox"/> Storm water so deep that it may be a safety concern during:	<input type="checkbox"/> any rain <input type="checkbox"/> large rain events
	<input type="checkbox"/> Other (please explain): _____	
2.	a. Is there any location in the Champaign County MS4 Area or Urbanized Area where you believe storm water gets polluted?	<input type="checkbox"/> Yes <input type="checkbox"/> No
	b. If you answered 'YES,' please describe that location or indicate the nearest street intersection: _____	
	c. If you answered 'YES,' please indicate the type of pollution you believe occurs at the location above. Check all that apply:	
	<input type="checkbox"/> Trash on the ground or in the street that may wash into the storm sewer system	
	<input type="checkbox"/> Washing of business vehicles in other than in a car wash facility	
	<input type="checkbox"/> Septic system release of sewage (seepage) onto the ground or into a stream	
	<input type="checkbox"/> A sanitary sewer that overflows onto the surface of the ground and/or empties into a stream	
	<input type="checkbox"/> Dumping of motor oil into a storm drain or onto the surface of the ground	
	<input type="checkbox"/> Dumping of unknown liquids into a storm drain or other part of the storm sewer system	
	<input type="checkbox"/> A liquid other than water that drains out of a pipe even during dry periods	
	<input type="checkbox"/> Other: (please explain): _____	

3. a. Do you recreate at any location in the Champaign County MS4 Area or Urbanized Area where water is a prominent feature? ☐ Yes ☐ No

b. If you answered 'YES,' please describe that location or indicate the nearest street intersection: _____

c. If you answered 'YES,' please indicate the type of recreation you take part in at this location. Check all that apply:

- ☐ Walking along or near the shore
- ☐ Fishing: ☐ from the shore ☐ from a boat
- ☐ Boating
- ☐ Wading and/or swimming
- ☐ Other (please explain):

d. If you indicated 'YES' above, do you have concerns about water quality at this location? ☐ Yes ☐ No
If so, please indicate your water quality concern(s) below. Check all that apply.

- ☐ Trash in the water that is unpleasant to see
- ☐ Trash in the water that causes pollution
- ☐ Bank or shore erosion that harms the quality of the aquatic environment
- ☐ Other pollution that is visible in the water and that harms the quality of the aquatic environment
- ☐ Other pollution in the water that may harm either myself or others who may come into contact with the pollution
- ☐ Catching fish that may be unsafe to eat due to pollution
- ☐ Other (please explain):

4. Please feel free to add any other comments you may have regarding storm water in the Champaign County MS4 Area or Urbanized Area:

5. Responses to this survey will be reported anonymously to the Champaign County Board. If you would like to receive notice of the meeting of the Champaign County Board at which the results of this survey will be considered please indicate below:

- ☐ YES, I would like to be included on the mailing list for the County Board review of the *Champaign County MS4 Area Storm Water Survey*.

6. Would you be more likely to respond to this MS4 Area Storm Water Survey if you had a chance to be randomly selected from all respondents to win a \$25 - \$50 gift card?

☐ YES

☐ NO

7. Please indicate the nearest street intersection to your home:

The nearest intersection location will be used only to provide a general context for your survey responses. Please be assured that your contact information will continue to remain anonymous.

This final section of the survey will help us make sure that we are collecting input from a representative sample of the population. This section is optional, and all responses are anonymous.

1) Age:

☐ 16-19

☐ 20-29

☐ 30-39

☐ 40-49

☐ 50-59

☐ 60-69

☐ 70-79

☐ 80-89

☐ 90 +

2) Gender:

☐ Male

☐ Female

☐ Prefer not to respond

3) Ethnic/Race groups you most identify with (check all that apply):

☐ African American/Black

☐ American Indian or Alaska Native

☐ Asian

☐ Native Hawaiian or Pacific Islander

☐ White/Caucasian

☐ Hispanic/Latino

☐ Other: _____

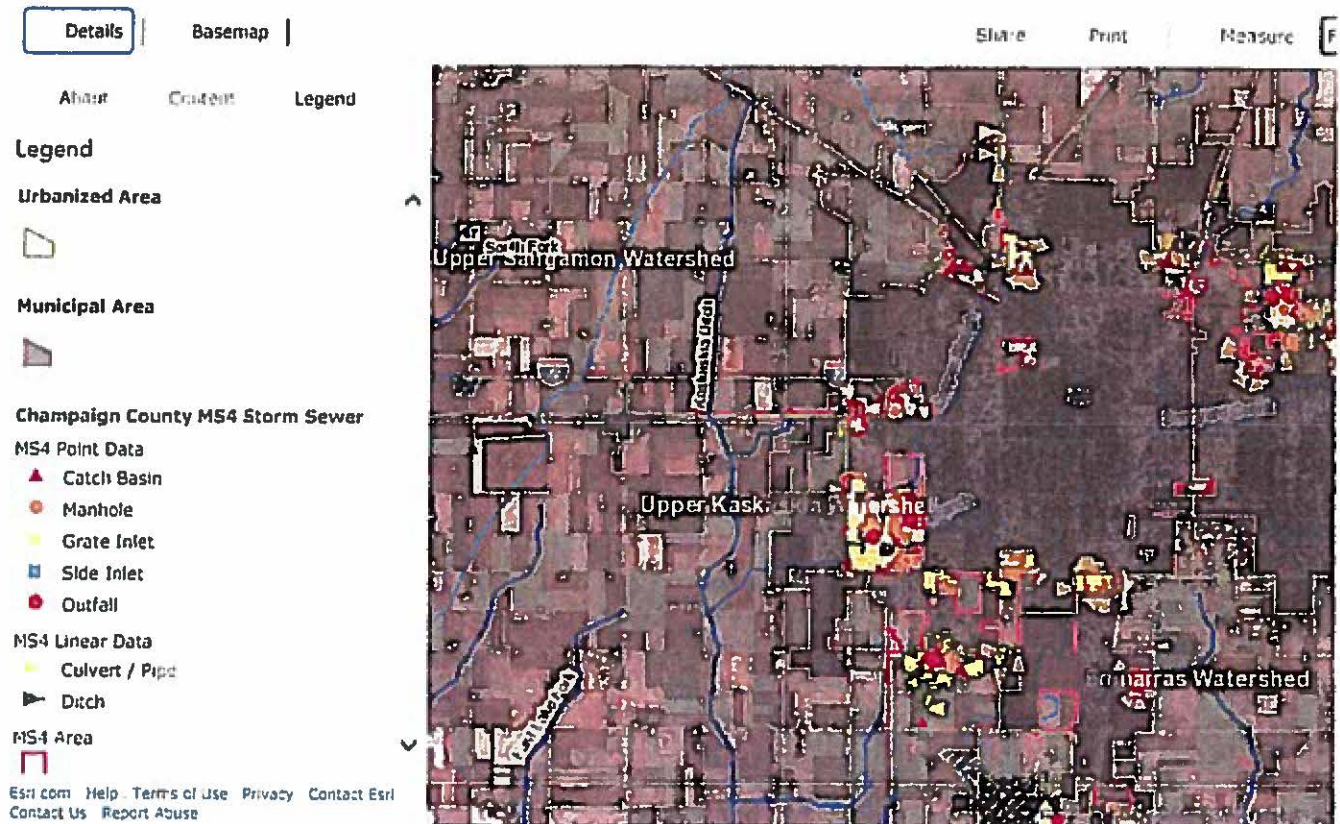
Thank you for completing this survey!

Please return the completed survey in the postage-paid return envelope provided.

The reverse side of this page contains a map that shows the location of the Champaign County MS4 Area within the greater Champaign County Urbanized Area.



Home ▾ Draft Champaign County MS4 Web Map



[Home](#) ▾ Draft Champaign County MS4 Web Map

Details

Basemap

Share

Print

Measure

[About](#)[Content](#)[Legend](#)

Legend

Urbanized Area



Municipal Area



Champaign County MS4 Storm Sewer

MS4 Point Data

- Catch Basin
- Manhole
- Grate Inlet
- Side Inlet
- Outfall

MS4 Linear Data

- Culvert / Pipe
- Ditch

MS4 Area



[Esri.com](#) [Help](#) [Terms of Use](#) [Privacy](#) [Contact Esri](#)
[Contact Us](#) [Report Abuse](#)

