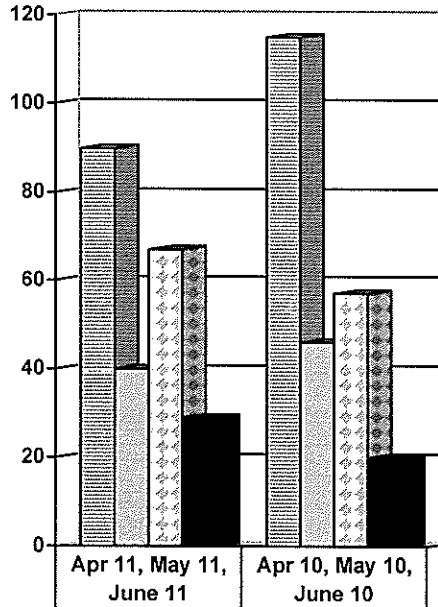
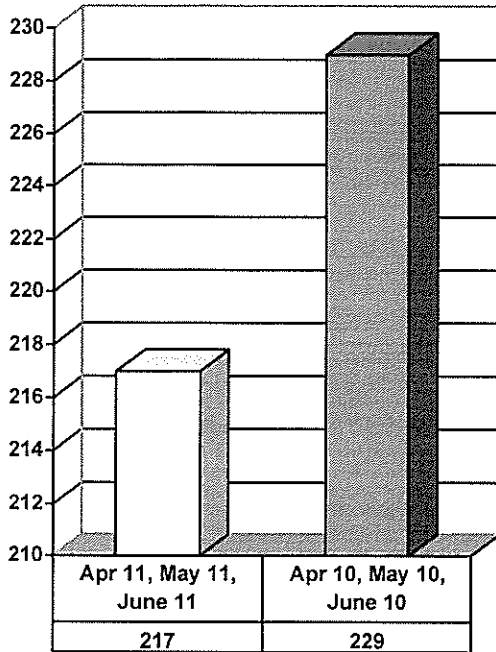


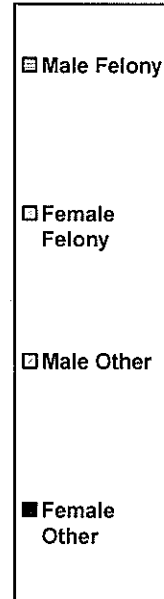
ADULT SUPERVISION INFORMATION
MONTHS OF APRIL 2011, MAY 2011 AND JUNE 2011
 (Compared against prior year information)

Demographics for Adult Intakes

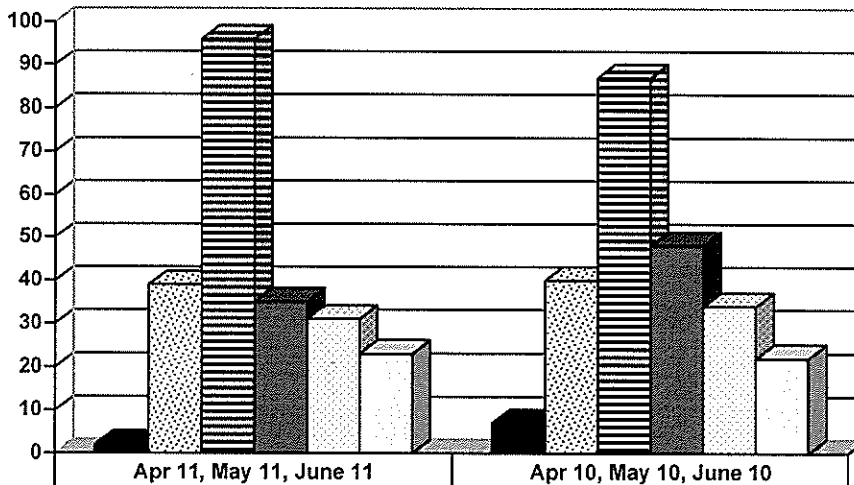
Adult Intakes Completed



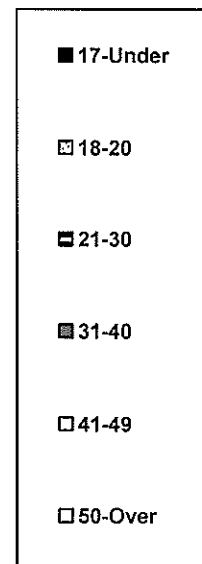
Male Felony	90	115
Female Felony	40	46
Male Other	67	57
Female Other	29	20



Age Demographics for Adult Intakes

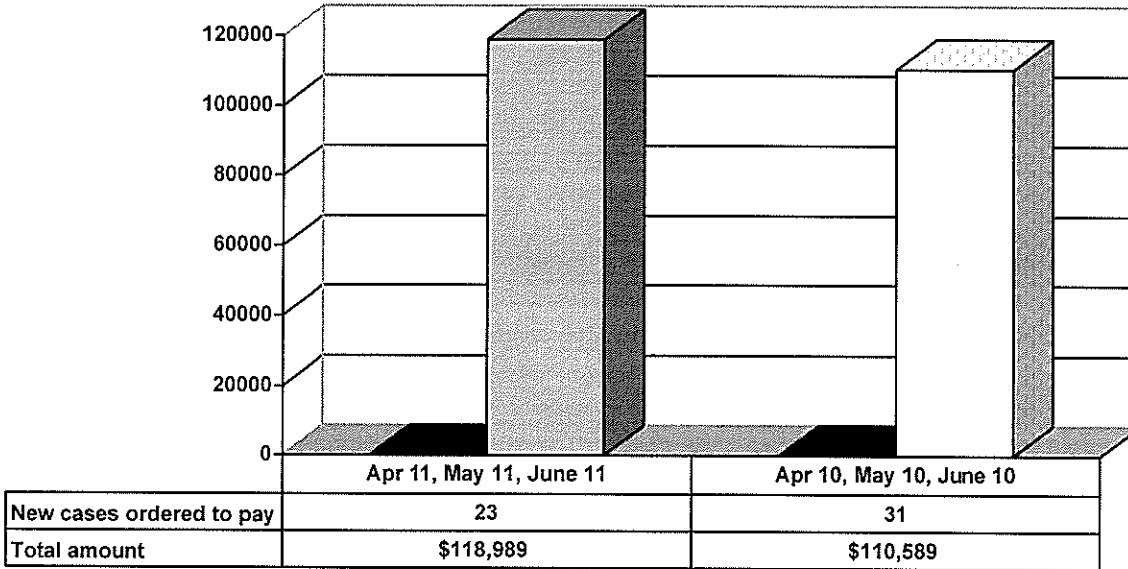


17-Under	2	7
18-20	39	40
21-30	96	87
31-40	35	48
41-49	31	34
50-Over	23	22

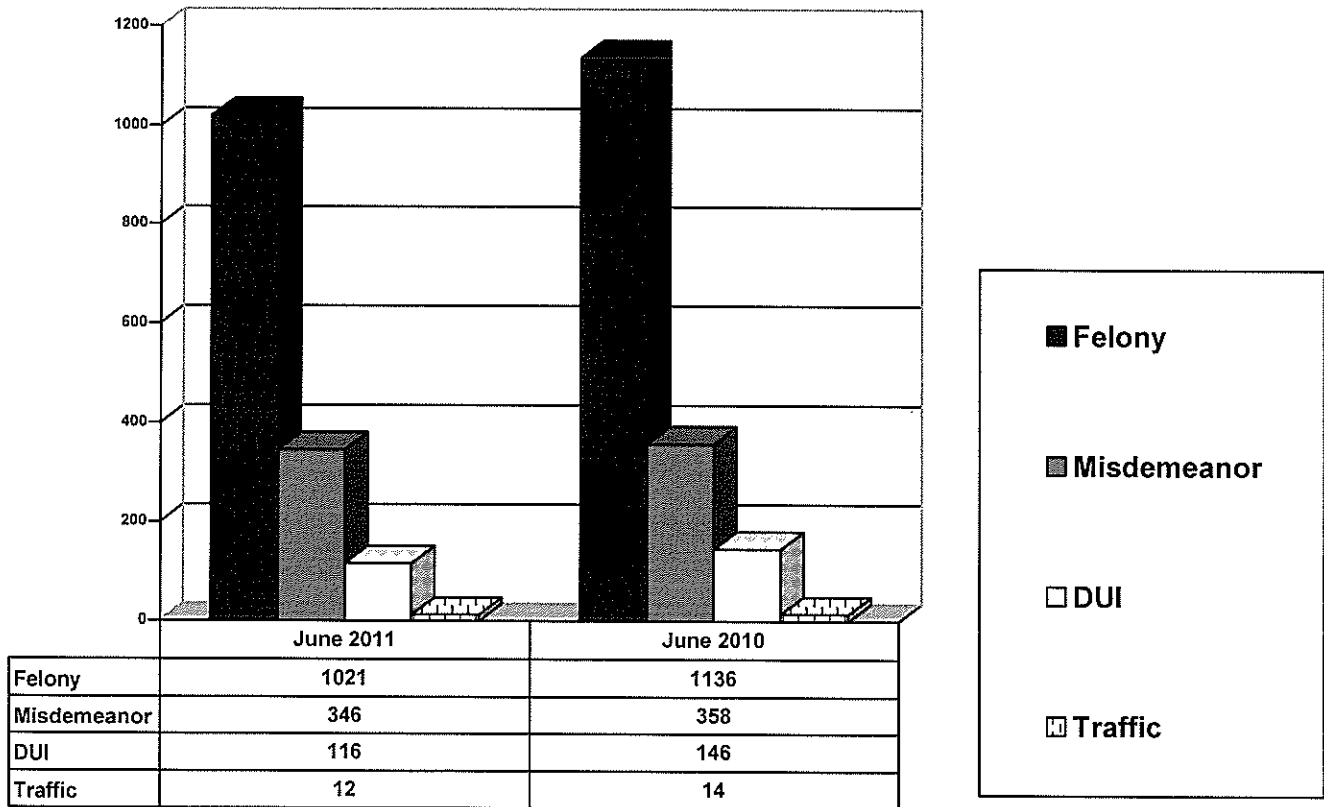


**ADULT SUPERVISION INFORMATION
MONTHS OF APRIL 2011, MAY 2011 AND JUNE 2011
(Compared with prior year information)**

Restitution Ordered in New Adult Cases

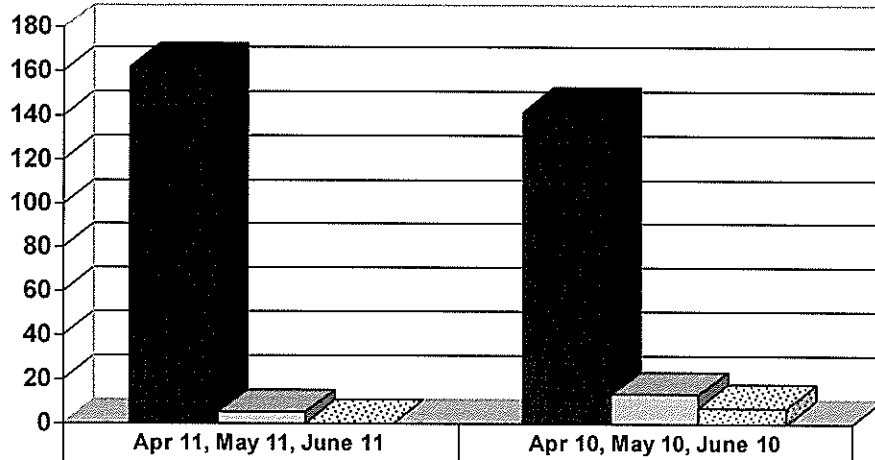


Breakdown of Adult Caseload at end of Reporting Periods



**ADULT SUPERVISION INFORMATION
MONTHS OF APRIL 2011, MAY 2011 AND JUNE 2011
(Compared against prior year information)**

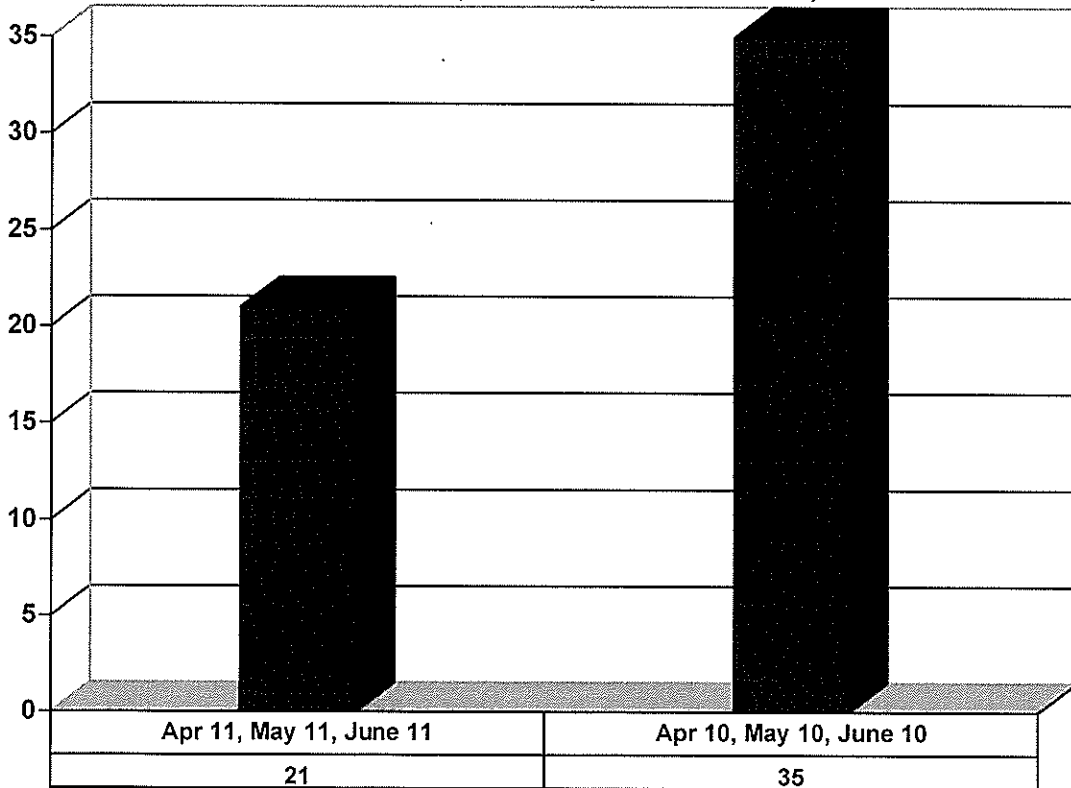
Adult Investigations Completed



- Presentence Reports
- Pre-trial/Bond Reports
- ▨ Record Checks

	Apr 11, May 11, June 11	Apr 10, May 10, June 10
Presentence Reports	162	142
Pre-trial/Bond Reports	5	13
Record Checks	0	7

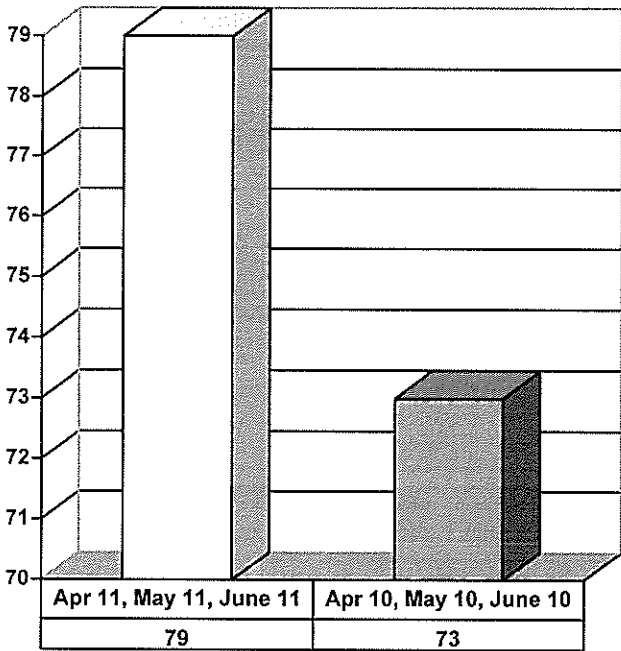
**Commitments to DOC
(Illinois Dept. of Corrections)**



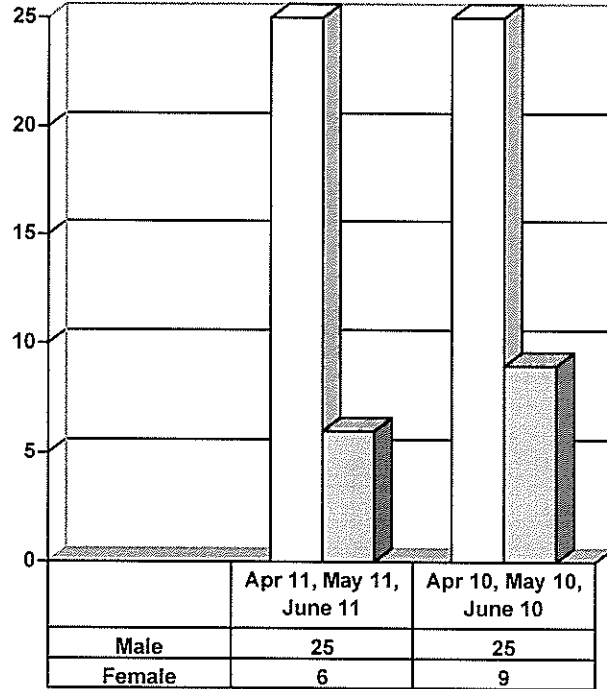
Apr 11, May 11, June 11	Apr 10, May 10, June 10
21	35

**JUVENILE SUPERVISION INFORMATION
MONTHS OF APRIL 2011, MAY 2011 AND JUNE 2011
(Compared against prior year information)**

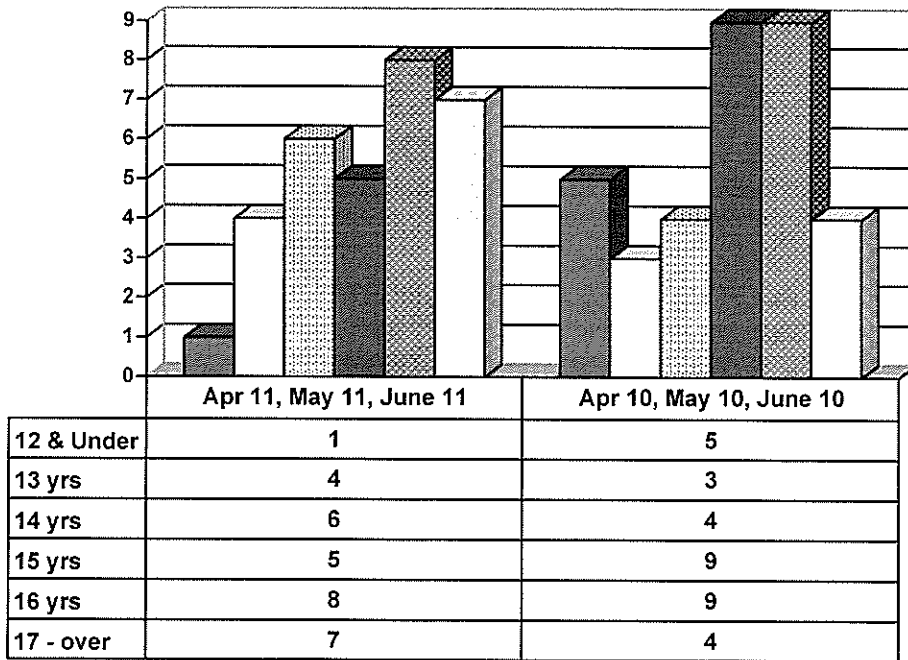
Juvenile Delinquency Petitions Filed



Demographics for Juvenile Admissions



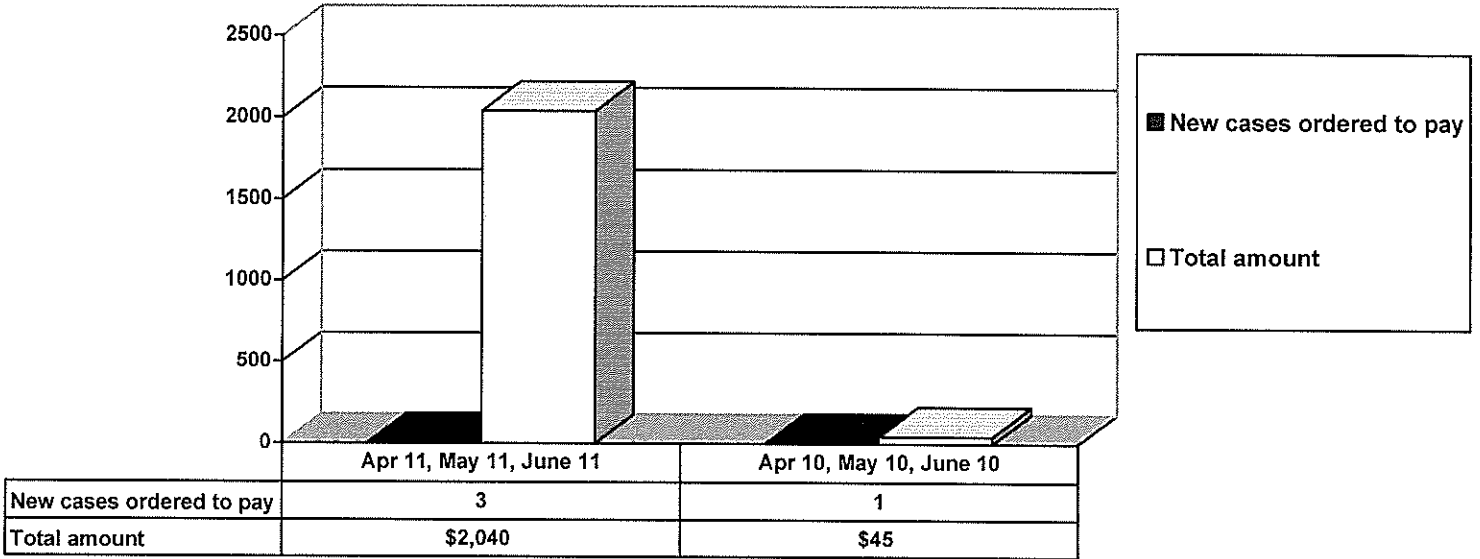
Age Demographics for Juvenile Admissions



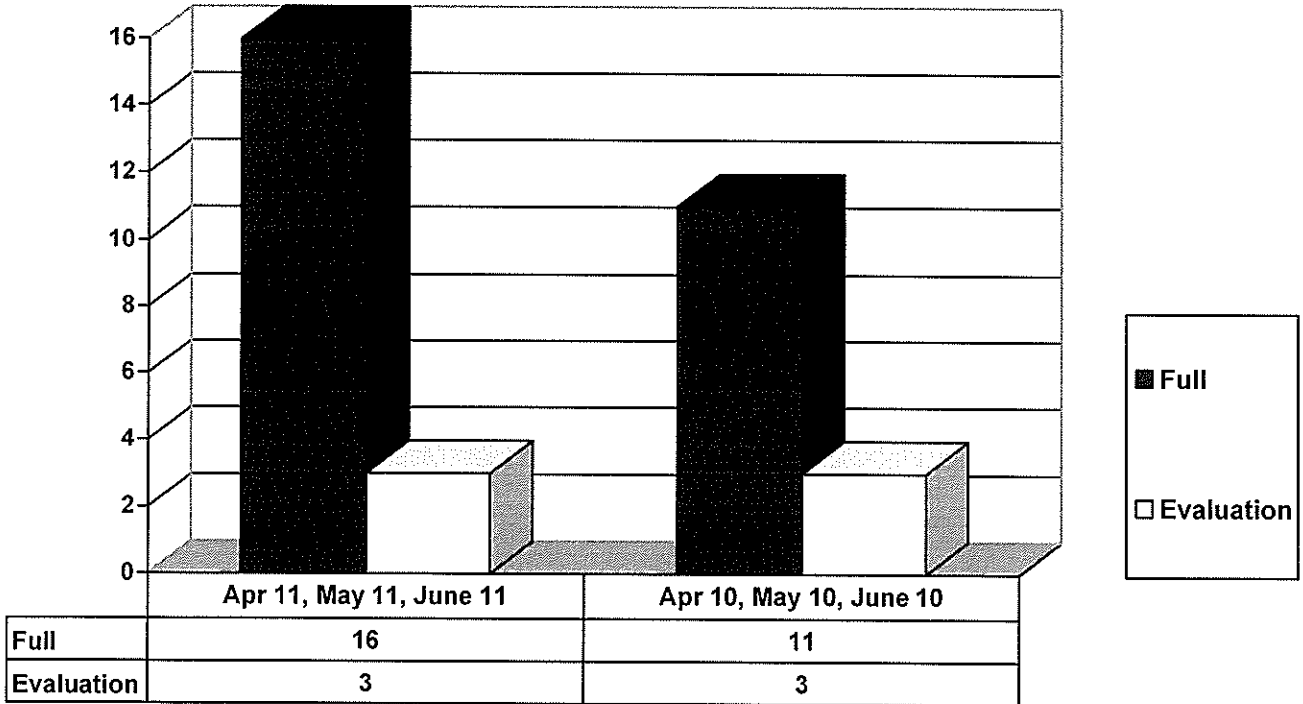
12 & Under
 13 yrs
 14 yrs
 15 yrs
 16 yrs
 17 - over

**JUVENILE SUPERVISION INFORMATION
MONTHS OF APRIL 2011, MAY 2011 AND JUNE 2011
(Compared with prior year information)**

Restitution Ordered in New Juvenile Cases

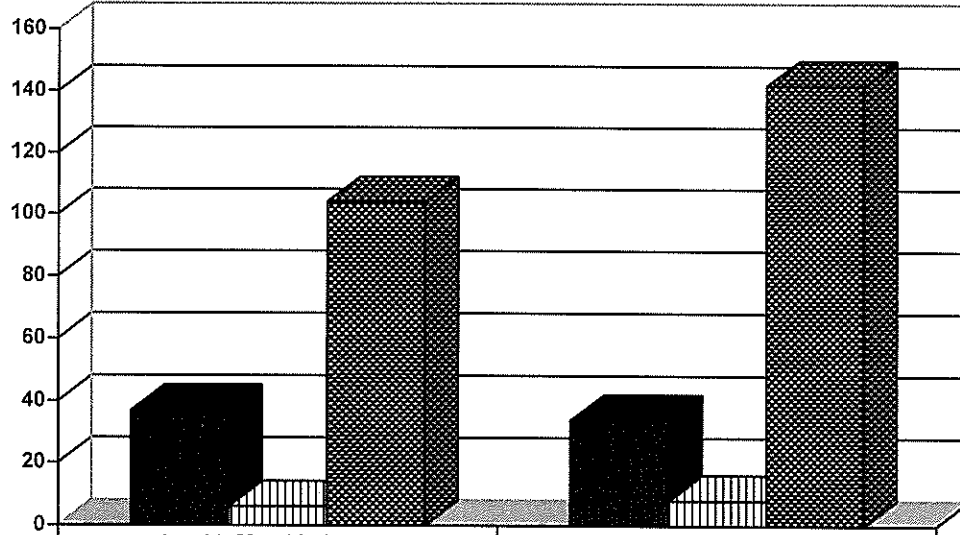


**Commitments to IDOJJ
(Illinois Dept. of Juvenile Justice)**



**JUVENILE SUPERVISION INFORMATION
MONTHS OF APRIL 2011, MAY 2011 AND JUNE 2011
(Compared with prior year information)**

Investigations Completed by Juvenile Unit



	Apr 11, May 11, June 11	Apr 10, May 10, June 10
Social Histories	37	34
Supplemental Social History	6	8
Remission/Review	104	142

■ Social Histories	□ Supplemental Social History	▨ Remission/Review
--------------------	-------------------------------	--------------------