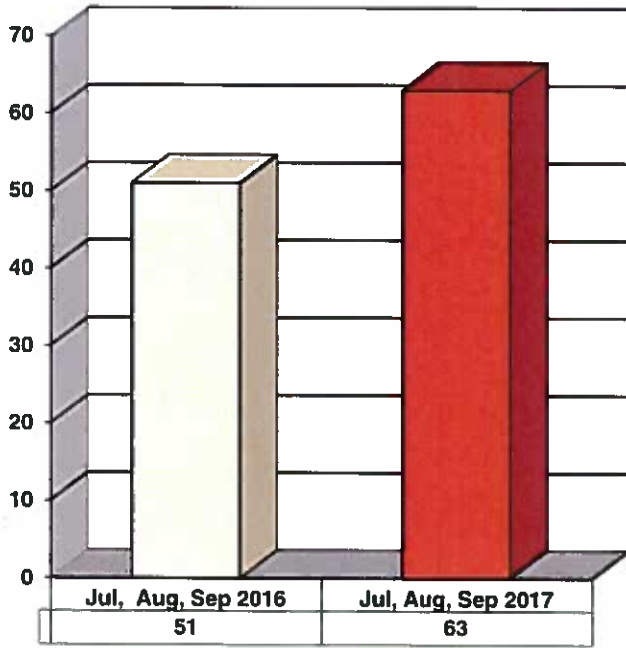
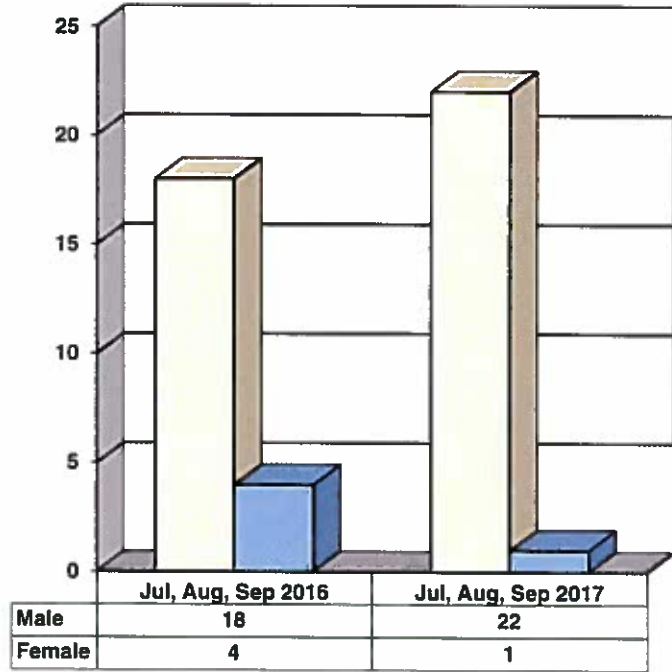


**JUVENILE SUPERVISION INFORMATION
MONTHS OF JULY, AUGUST AND SEPTEMBER 2017
(Compared to Prior Year)**

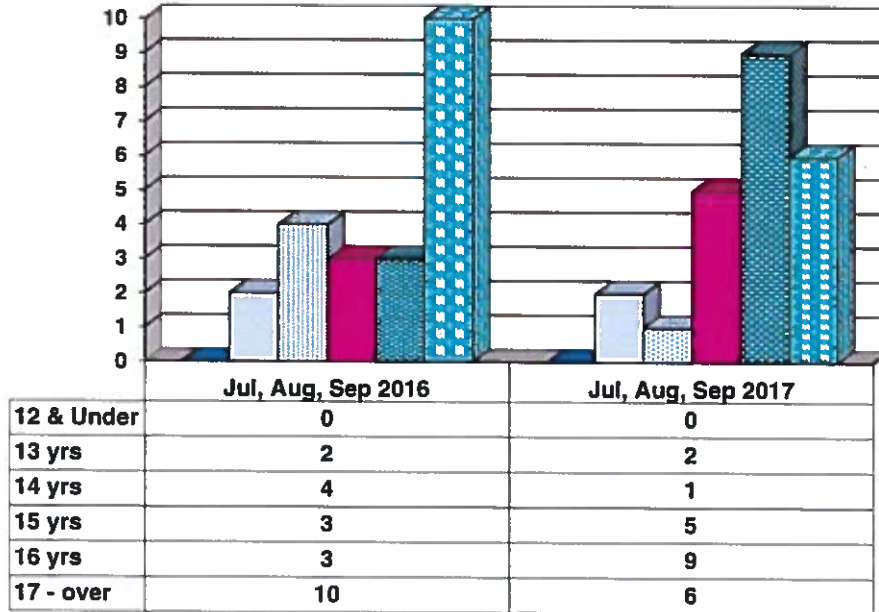
Juvenile Delinquency Petitions Filed



Gender Demographics for Juvenile Admissions

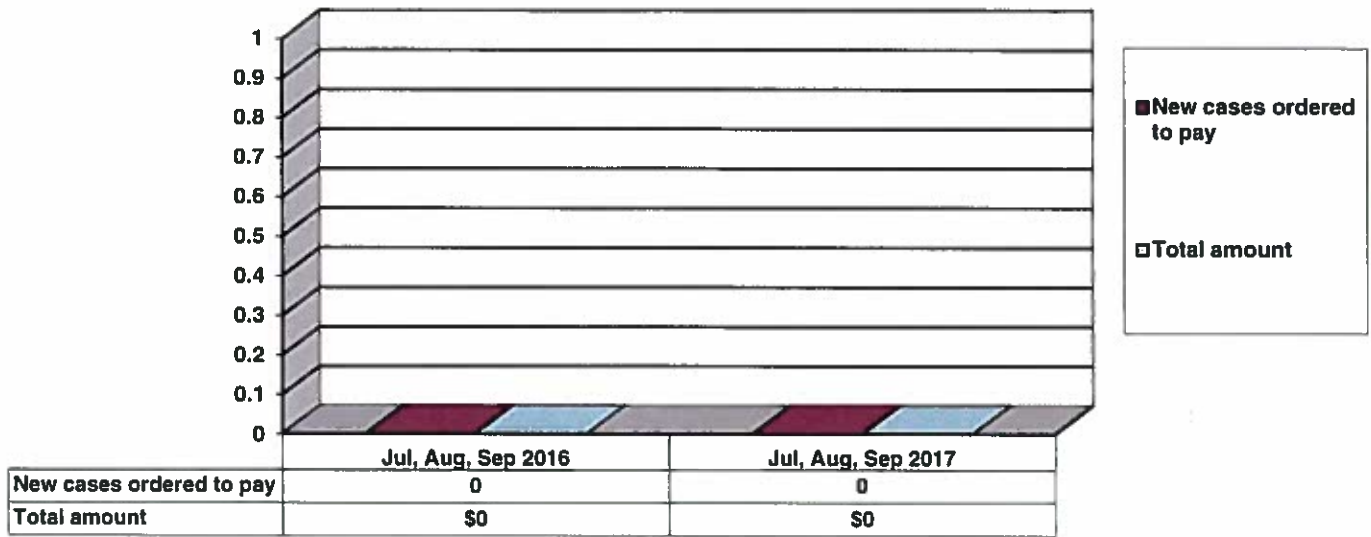


Age Demographics for Juvenile Admissions

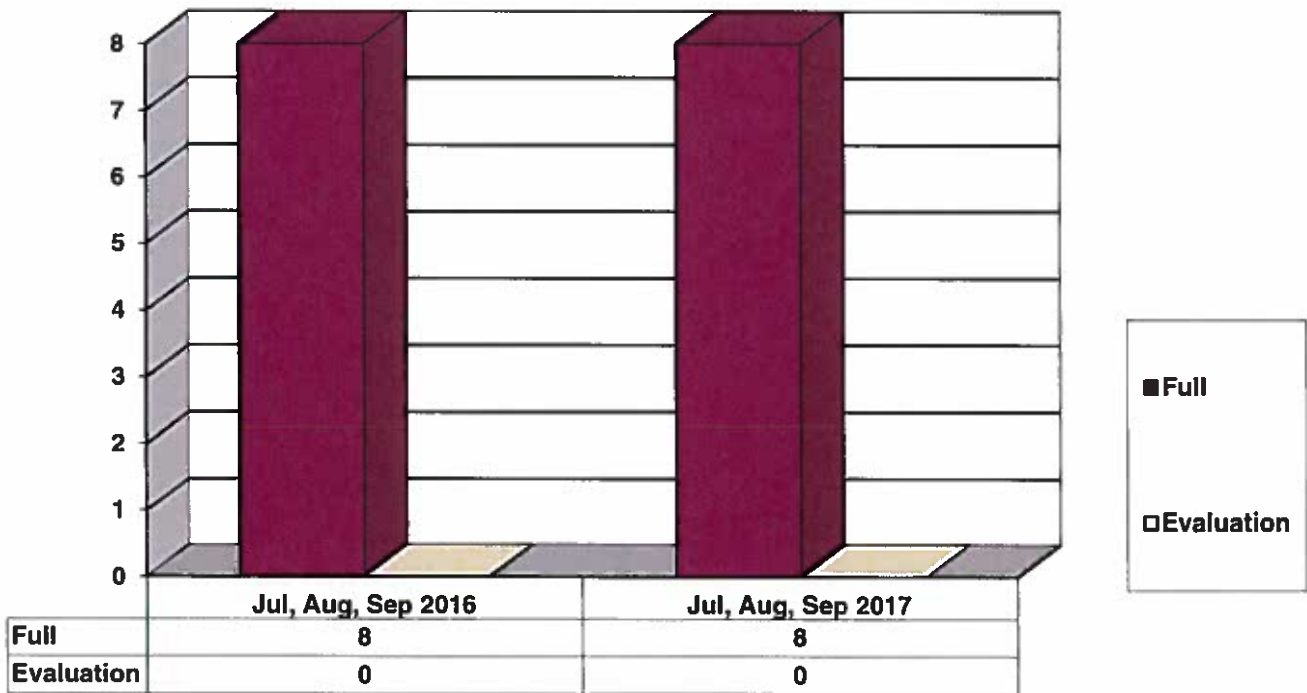


12 & Under
 13 yrs
 14 yrs
 15 yrs
 16 yrs
 17 - over

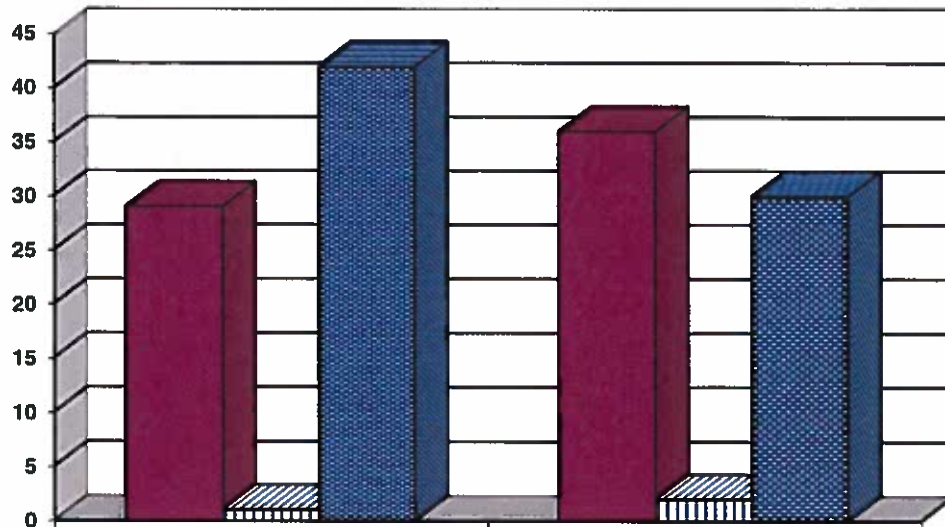
Restitution Ordered in New Juvenile Cases



Commitments to Illinois Department of Juvenile Justice



Investigations Completed by Juvenile Division



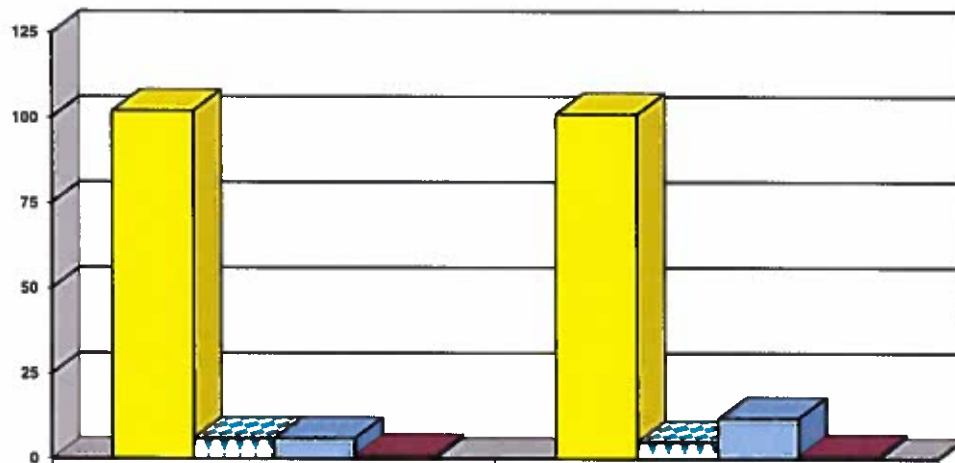
	Jul, Aug, Sep 2016	Jul, Aug, Sep 2017
Social Histories	29	36
Supplemental Social History	1	2
Remission/Review	42	30

■ Social Histories

▨ Supplemental Social History

■ Remission/Review

Juvenile Caseload at End of Reporting Periods



	September 2016	September 2017
Probation	102	101
Continued under Supervision	6	5
Informal	6	12
Other	1	1

■ Probation

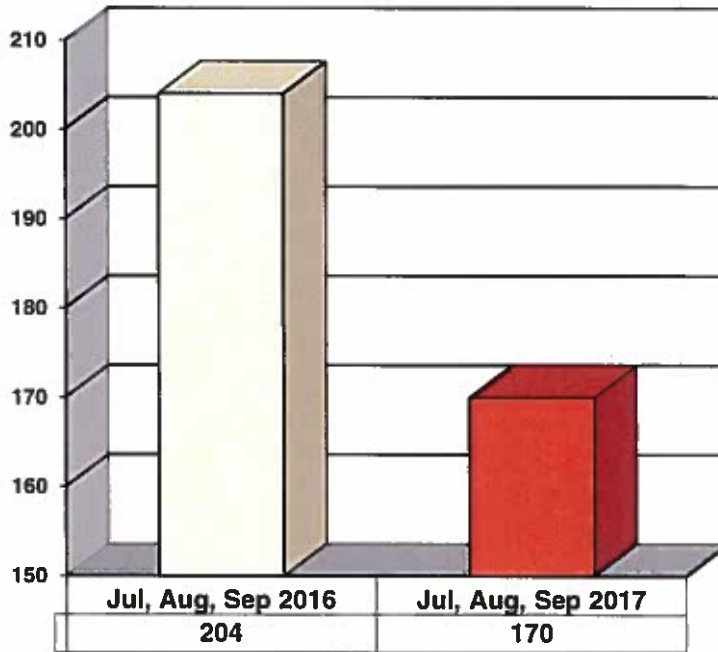
▨ Continued under Supervision

■ Informal

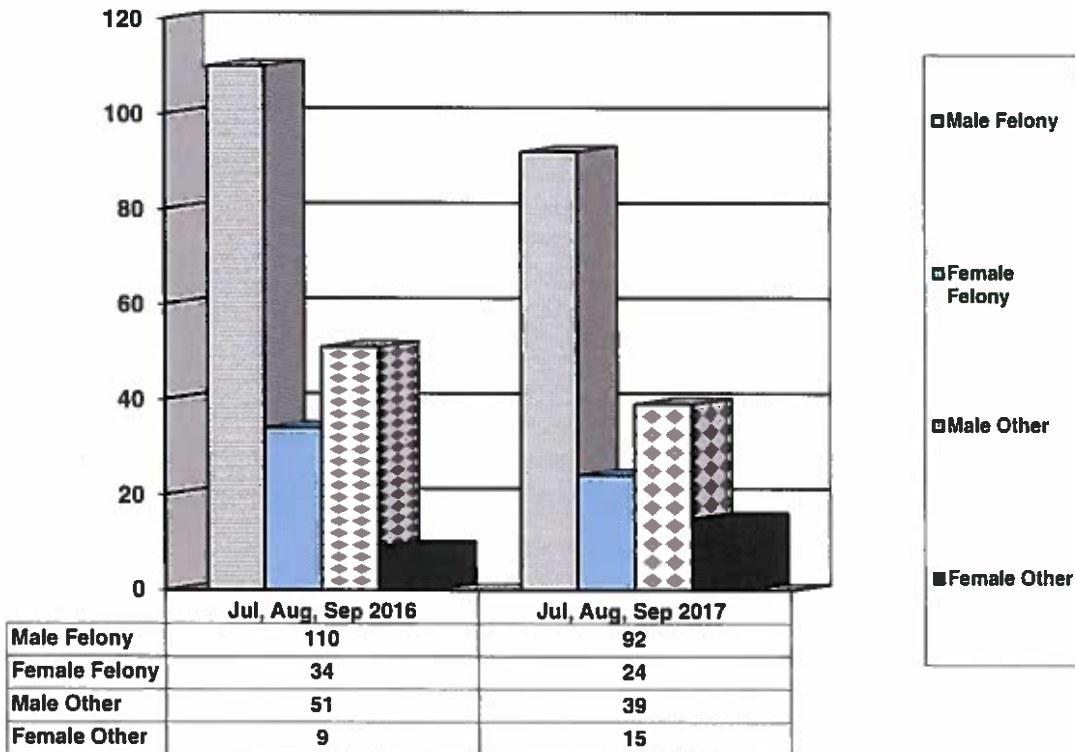
■ Other

**ADULT SUPERVISION INFORMATION
JULY, AUGUST AND SEPTEMBER 2017
(Compared to Prior Year)**

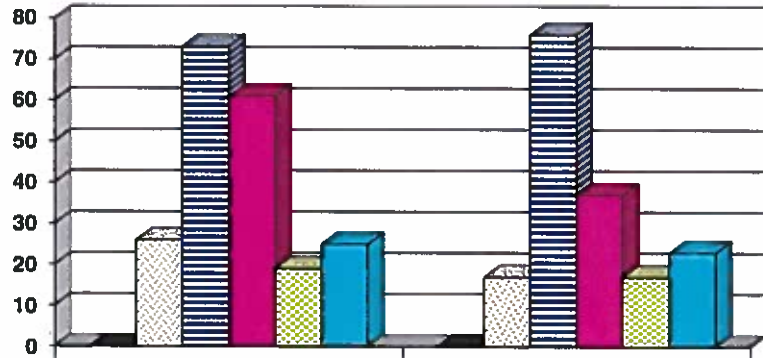
Adult Intakes Completed



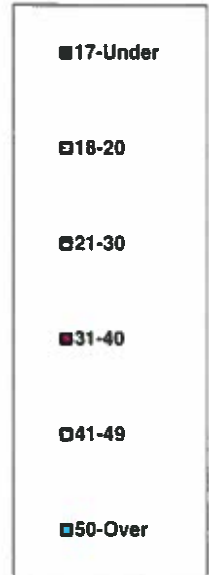
Gender Demographics for Adult Intakes



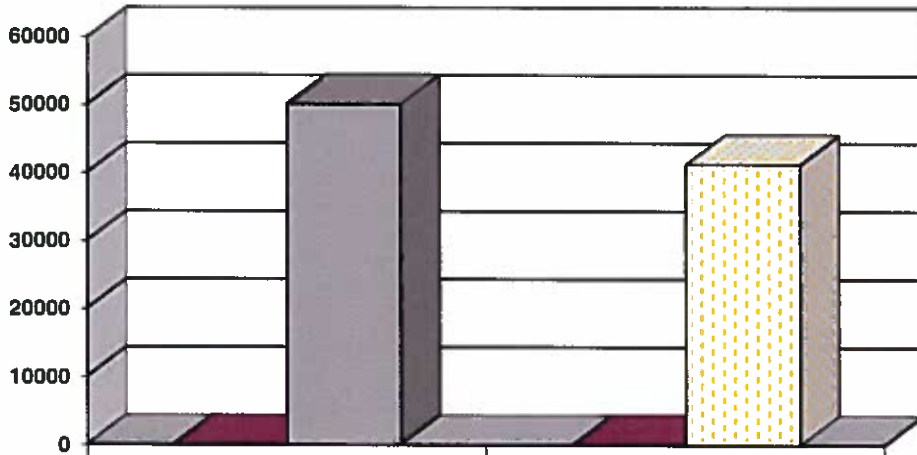
Age Demographics for Adult Intakes



	Jul, Aug, Sep 2016	Jul, Aug, Sep 2017
17-Under	0	0
18-20	26	17
21-30	73	76
31-40	61	37
41-49	19	17
50-Over	25	23

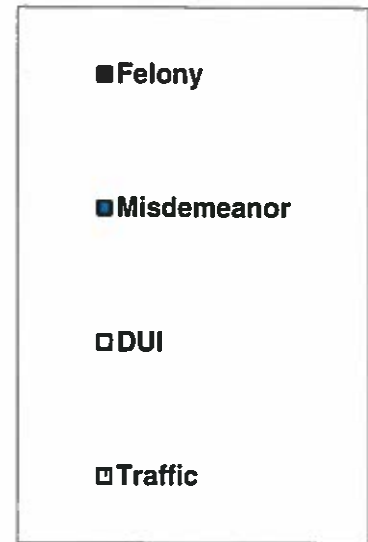
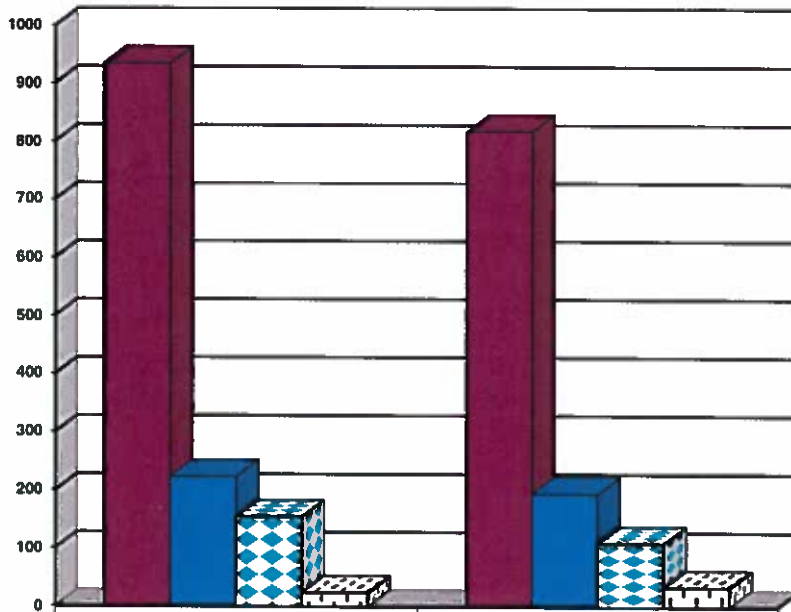


Restitution Ordered in New Adult Cases



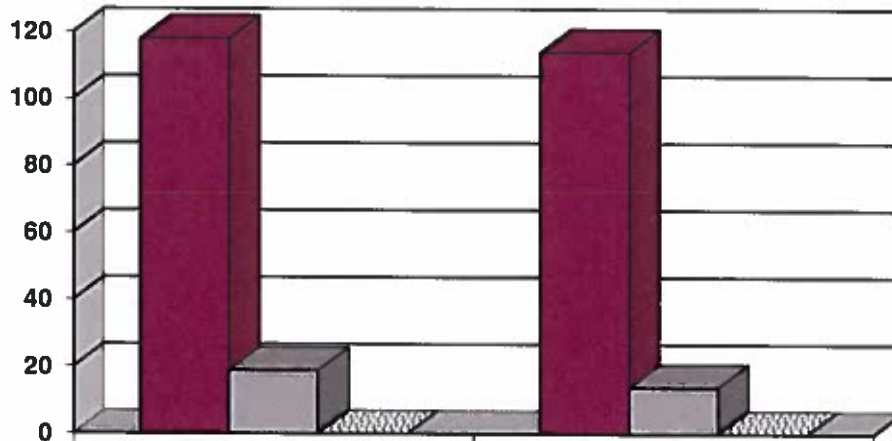
	Jul, Aug, Sep 2016	Jul, Aug, Sep 2017
New cases ordered to pay	12	17
Total amount	\$50,119	\$41,277

Breakdown of Adult Caseload at End of Reporting Periods



	September 2016	September 2017
Felony	934	818
Misdemeanor	224	195
DUI	155	110
Traffic	24	34

Adult Investigations Completed



	Jul, Aug, Sep 2016	Jul, Aug, Sep 2017
Presentence Reports	118	114
Pre-trial/Bond Reports	19	14
Record Checks	0	0

Commitments to Illinois Department of Corrections

