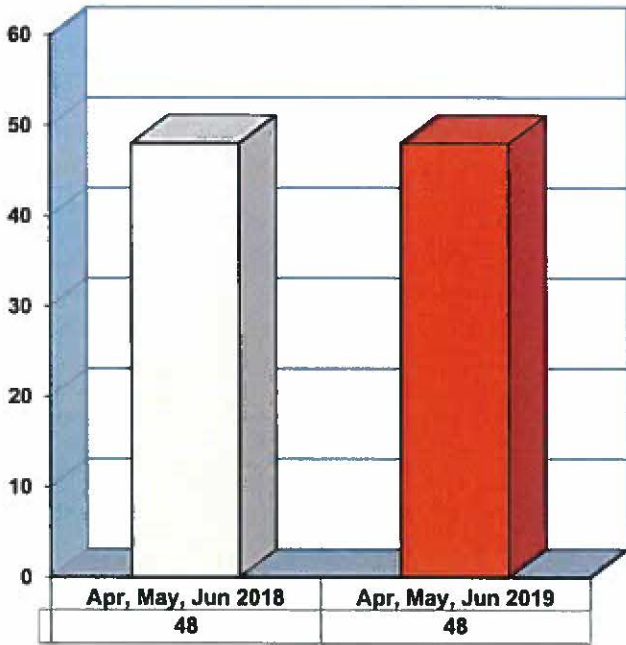
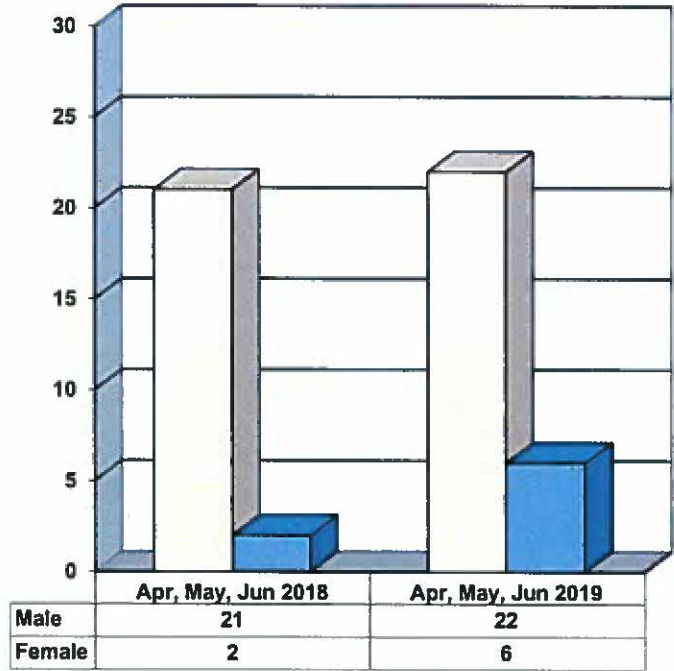


**JUVENILE SUPERVISION INFORMATION  
MONTHS OF APRIL, MAY AND JUNE 2019  
(Compared to Prior Year)**

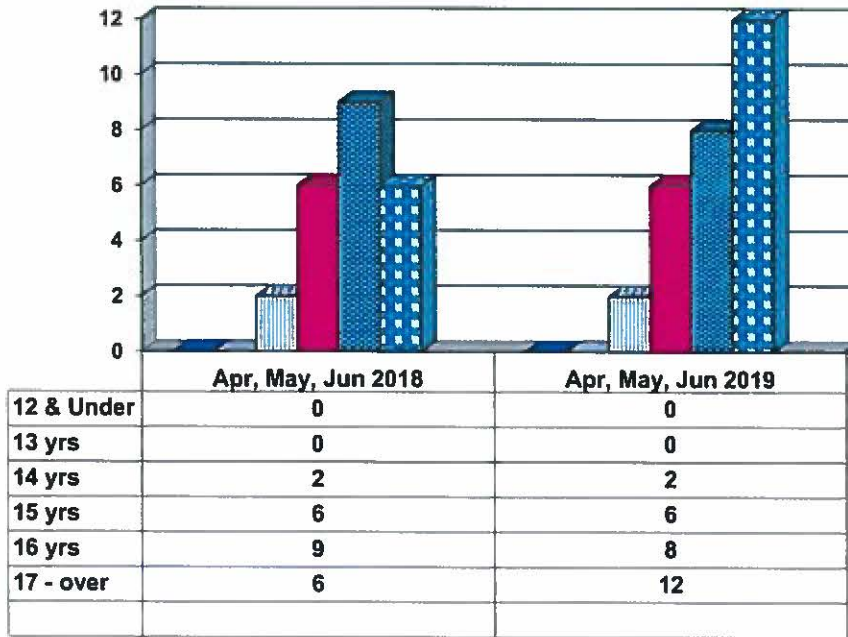
**Juvenile Delinquency Petitions Filed**



**Gender Demographics for Juvenile Admissions**

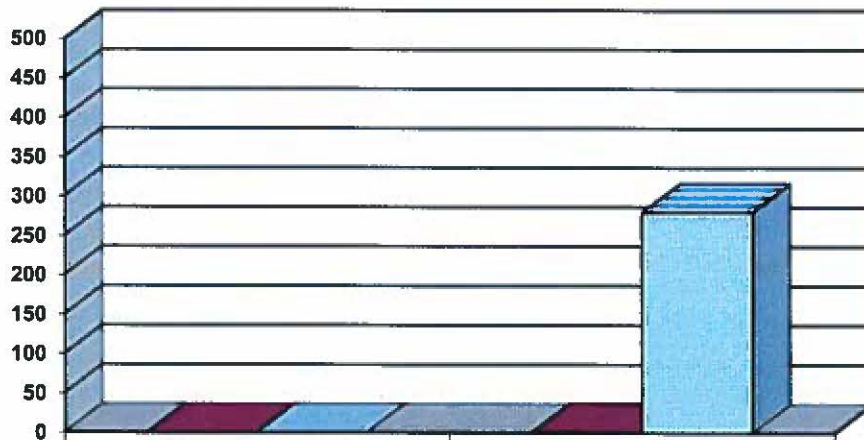


**Age Demographics for Juvenile Admissions**



12 & Under
  13 yrs
  14 yrs
  15 yrs
  16 yrs
  17 - over

### Restitution Ordered in New Juvenile Cases

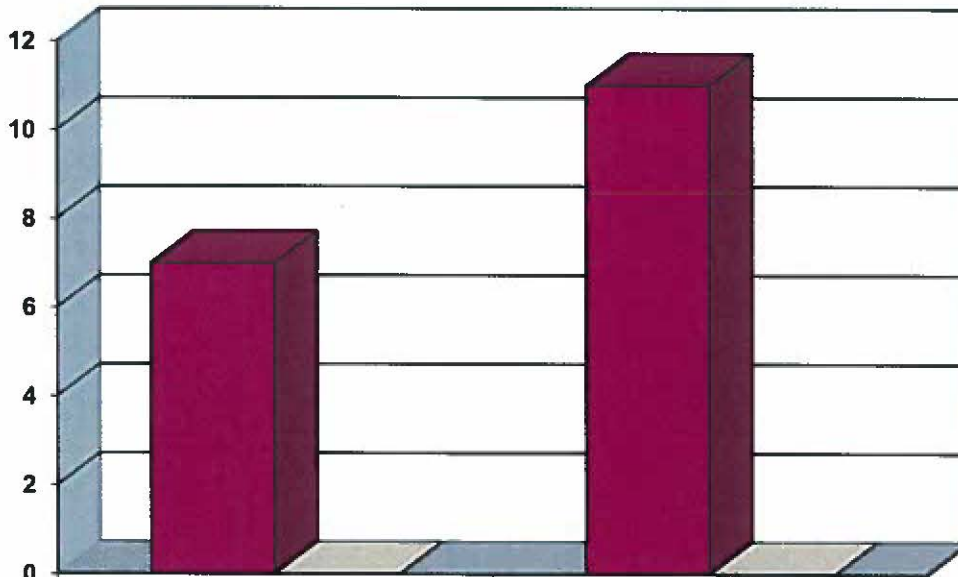


■ New cases ordered to pay

□ Total amount

	Apr, May, Jun 2018	Apr, May, Jun 2019
New cases ordered to pay	0	1
Total amount	\$0	\$280

### Commitments to Illinois Department of Juvenile Justice

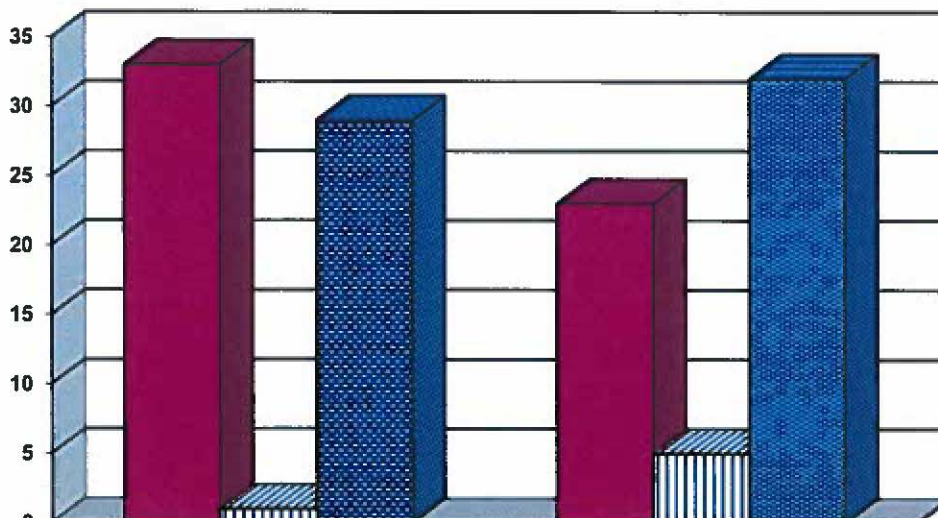


■ Full

□ Evaluation

	Apr, May, Jun 2018	Apr, May, Jun 2019
Full	7	11
Evaluation	0	0

### Investigations Completed by Juvenile Division



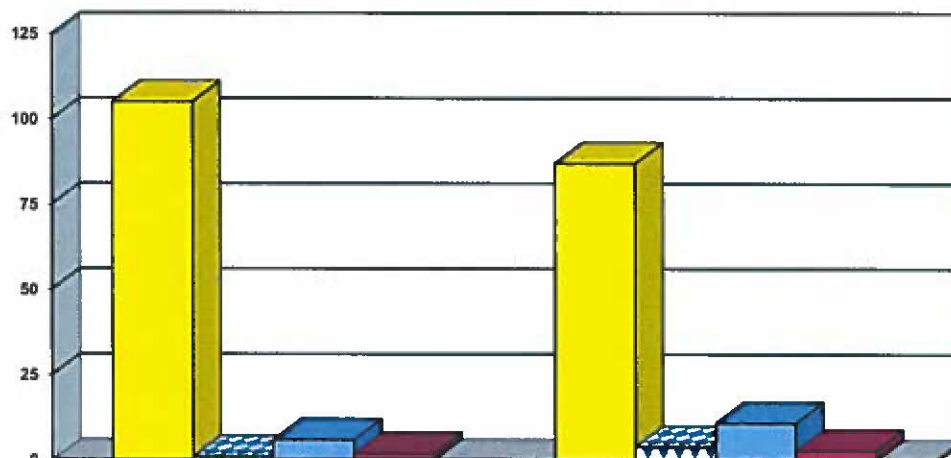
	Apr, May, Jun 2018	Apr, May, Jun 2019
Social Histories	33	23
Supplemental Social History	1	5
Remission/Review	29	32

■ Social Histories

■ Supplemental Social History

■ Remission/Review

### Juvenile Caseload at End of Reporting Periods



	June 2018	June 2019
Probation	105	87
Continued under Supervision	1	4
Informal	6	11
Other	2	3

■ Probation

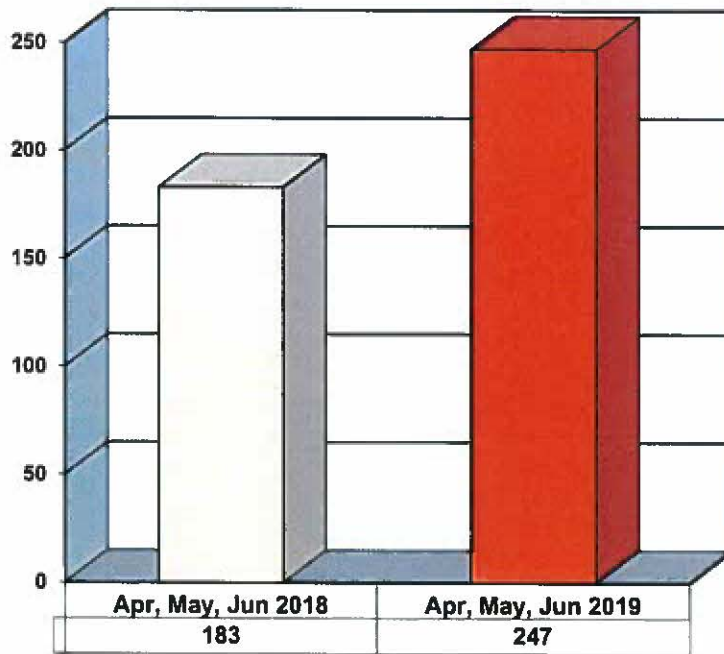
■ Continued under Supervision

■ Informal

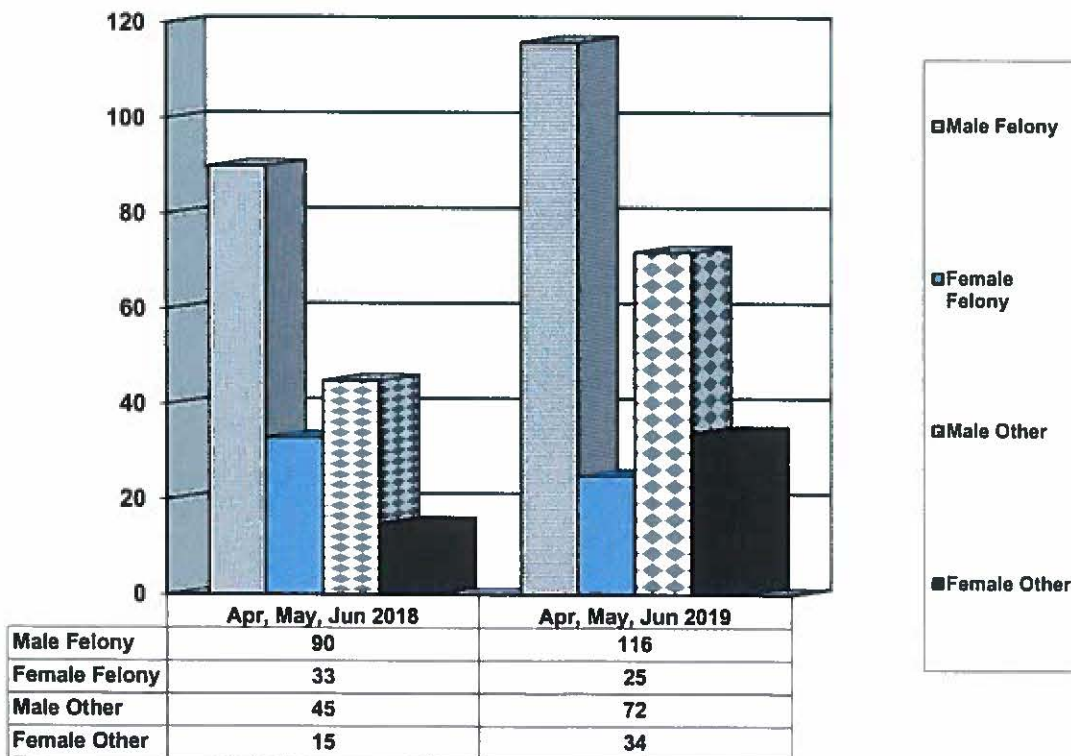
■ Other

**ADULT SUPERVISION INFORMATION  
MONTHS OF APRIL, MAY AND JUNE 2019  
(Compared to Prior Year)**

**Adult Intakes Completed**

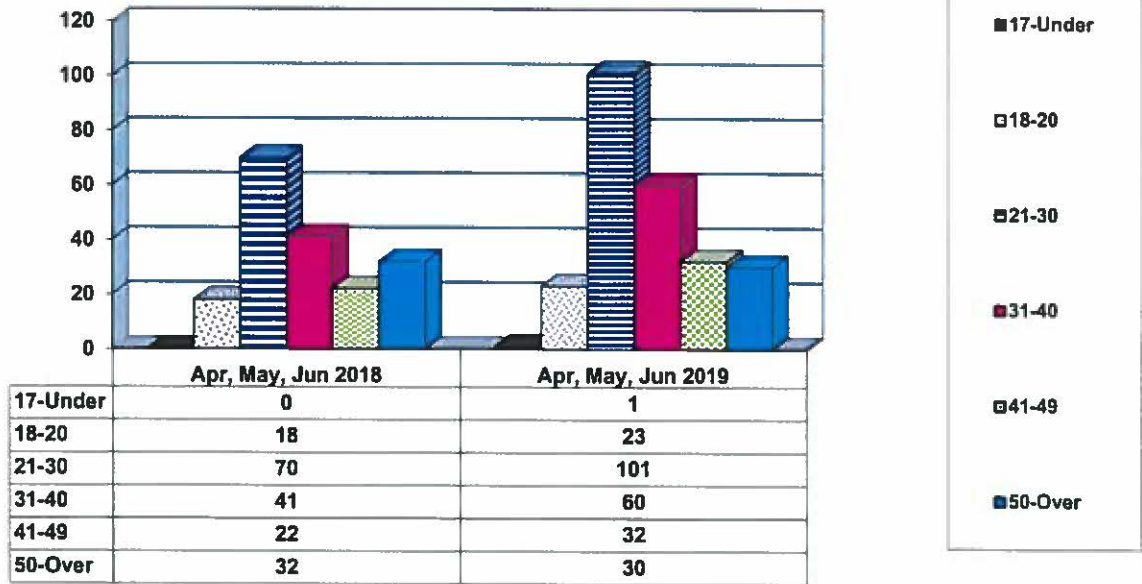


**Gender Demographics for Adult Intakes**

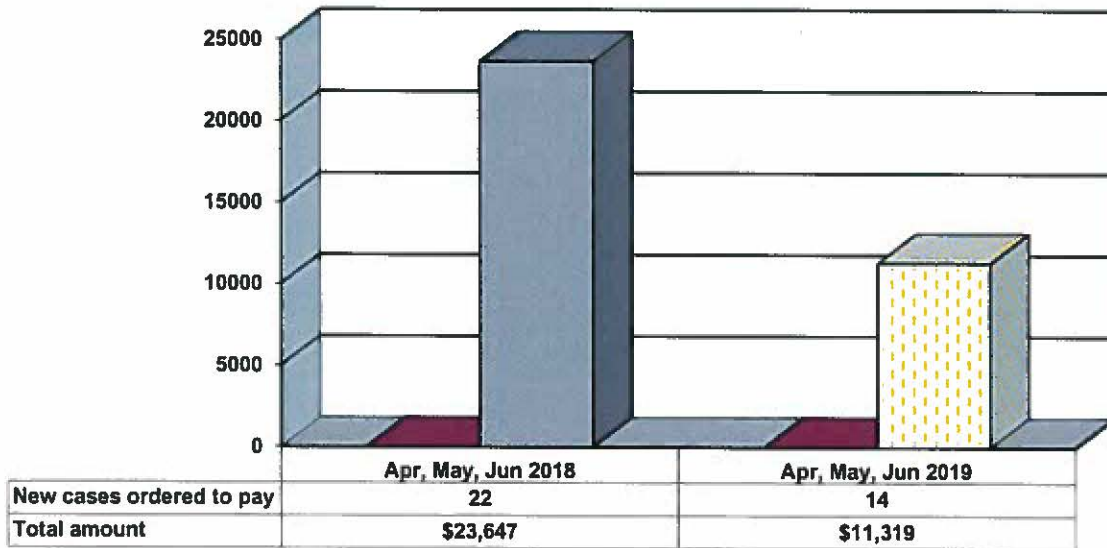




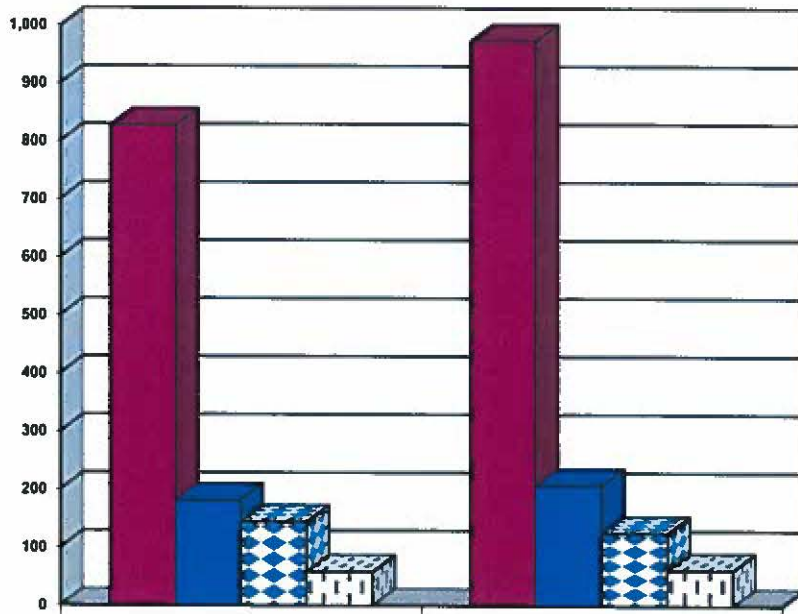
### Age Demographics for Adult Intakes



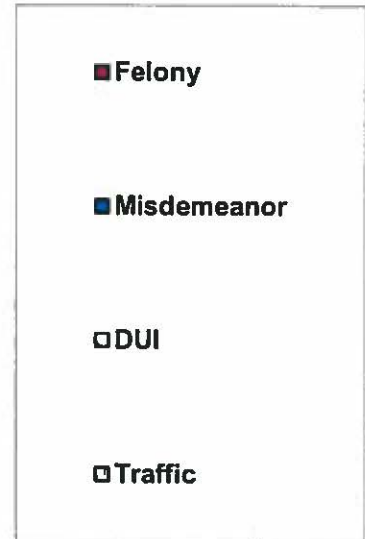
### Restitution Ordered in New Adult Cases



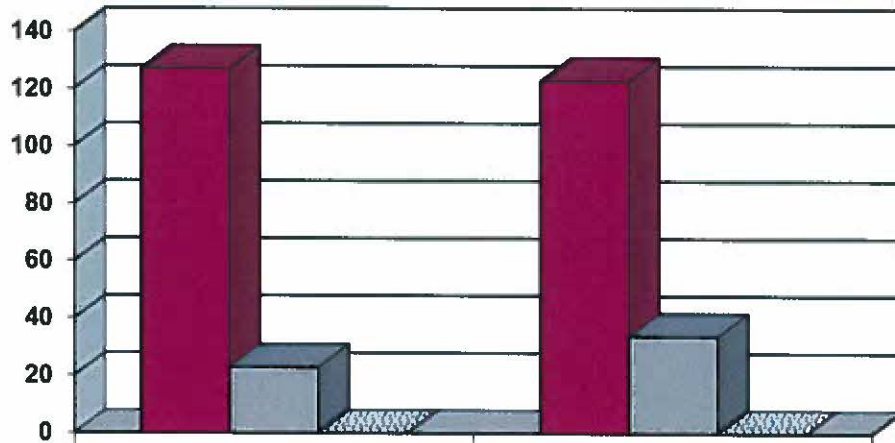
### Breakdown of Adult Caseload at End of Reporting Periods



	June 2018	June 2019
<b>Felony</b>	<b>827</b>	<b>973</b>
<b>Misdemeanor</b>	<b>181</b>	<b>207</b>
<b>DUI</b>	<b>144</b>	<b>125</b>
<b>Traffic</b>	<b>58</b>	<b>61</b>



### Adult Investigations Completed



	Apr, May, Jun 2018	Apr, May, Jun 2019
<b>Presentence Reports</b>	<b>127</b>	<b>123</b>
<b>Pre-trial/Bond Reports</b>	<b>23</b>	<b>34</b>
<b>Record Checks</b>	<b>0</b>	<b>0</b>



### Commitments to Illinois Department of Corrections

