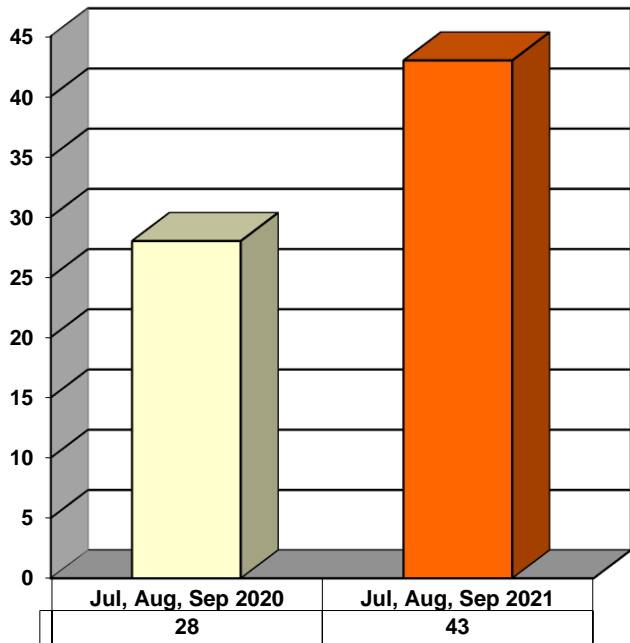
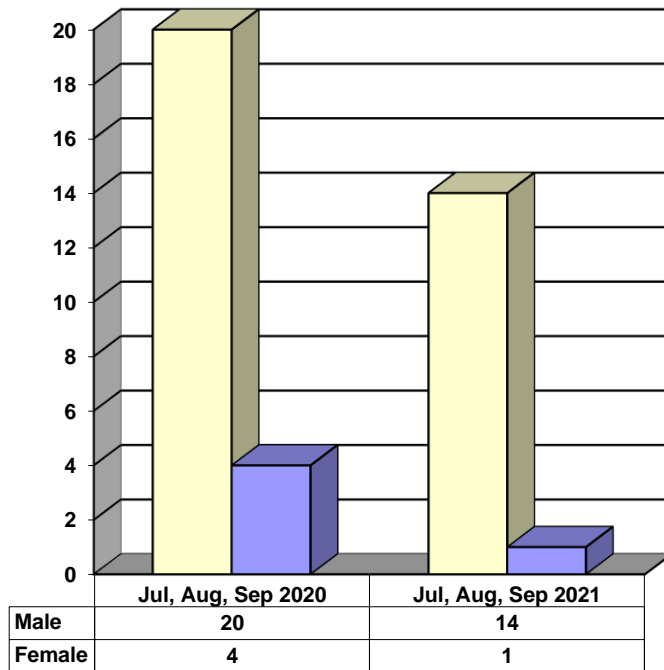


**JUVENILE SUPERVISION INFORMATION
MONTHS OF JULY, AUGUST, AND SEPTEMBER 2021
(Compared to Prior Year)**

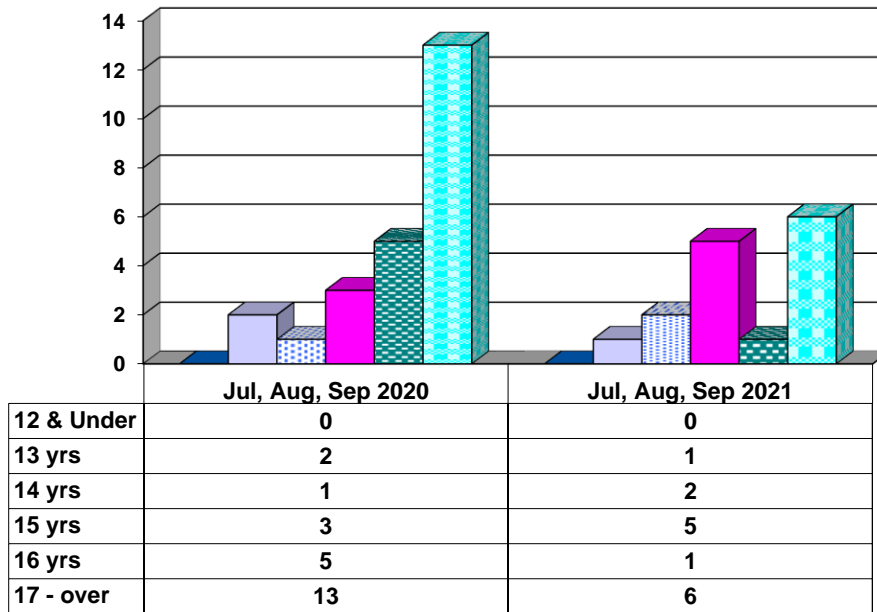
Juvenile Delinquency Petitions Filed



Gender Demographics for Juvenile Admissions

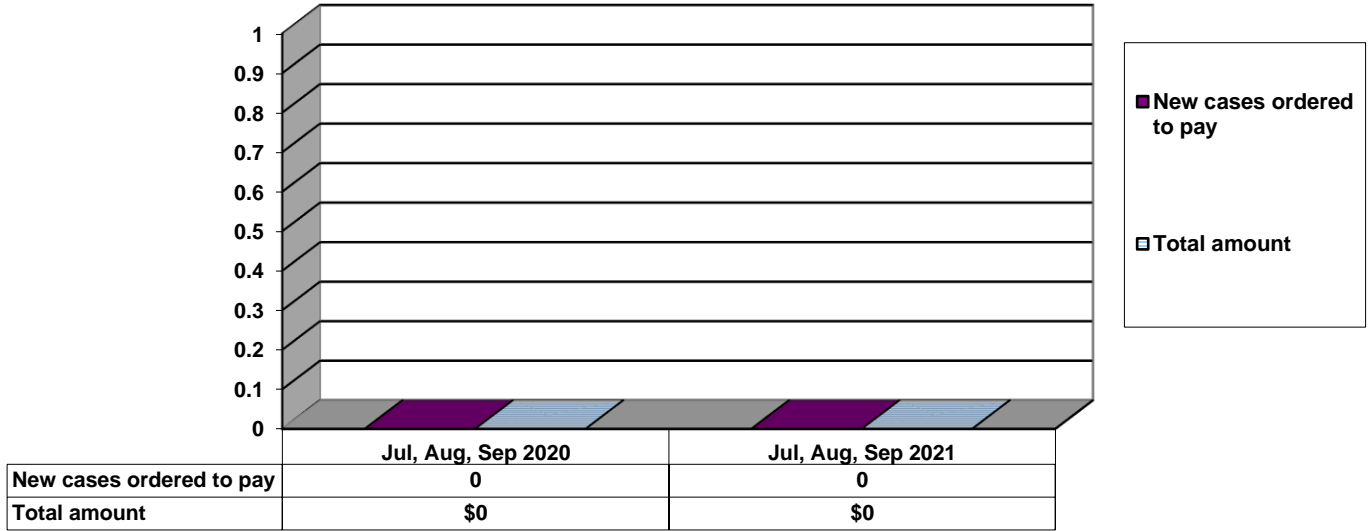


Age Demographics for Juvenile Admissions

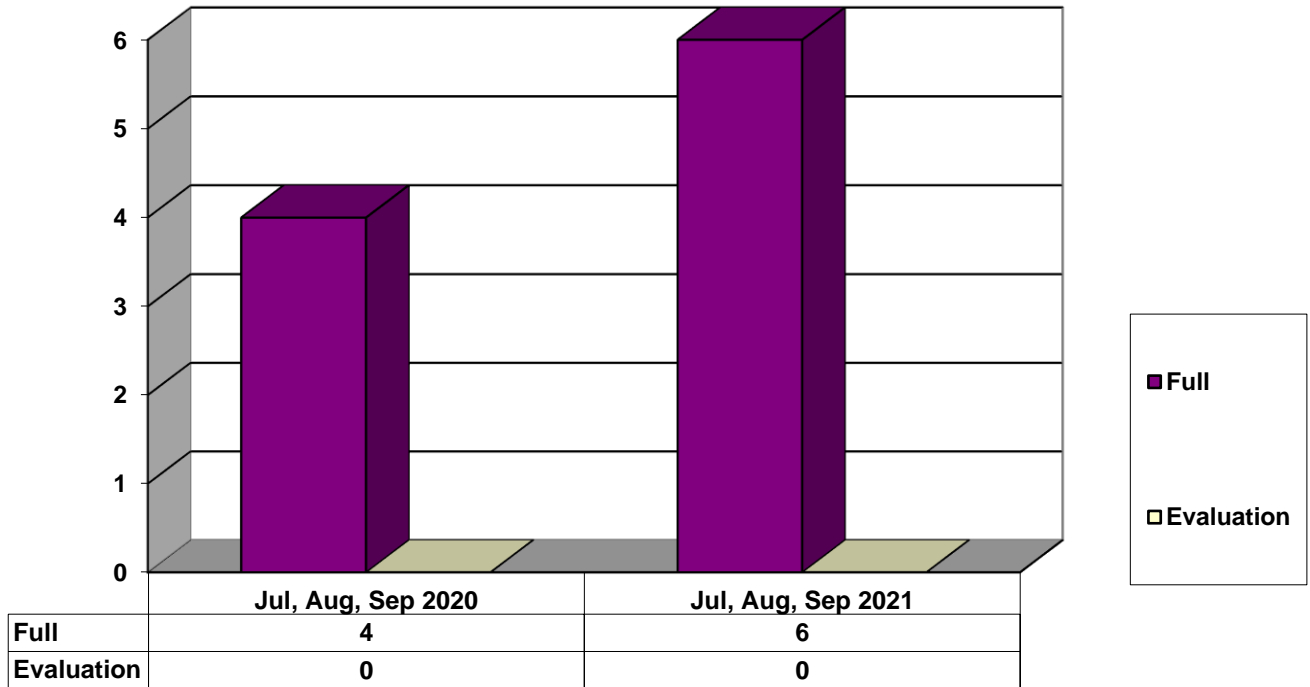


■ 12 & Under
 ■ 13 yrs
 ■ 14 yrs
 ■ 15 yrs
 ■ 16 yrs
 ■ 17 - over

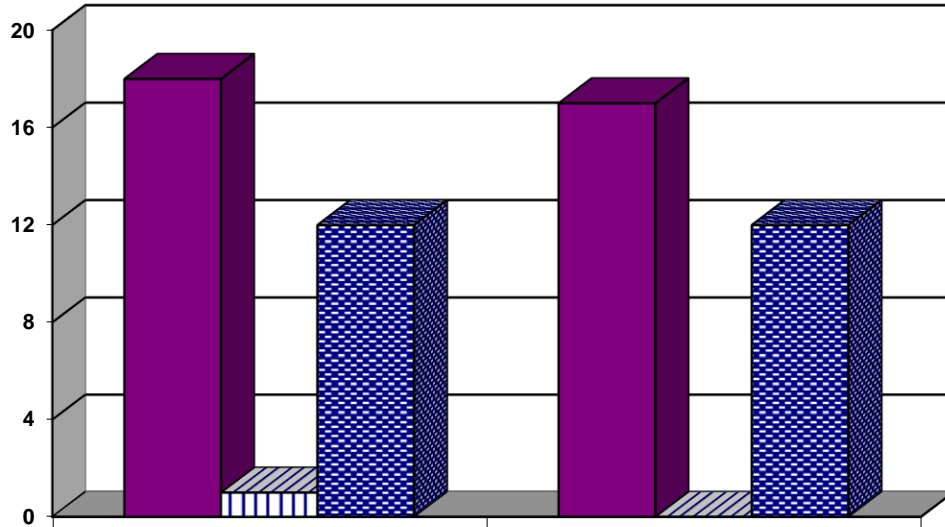
Restitution Ordered in New Juvenile Cases



Commitments to Illinois Department of Juvenile Justice



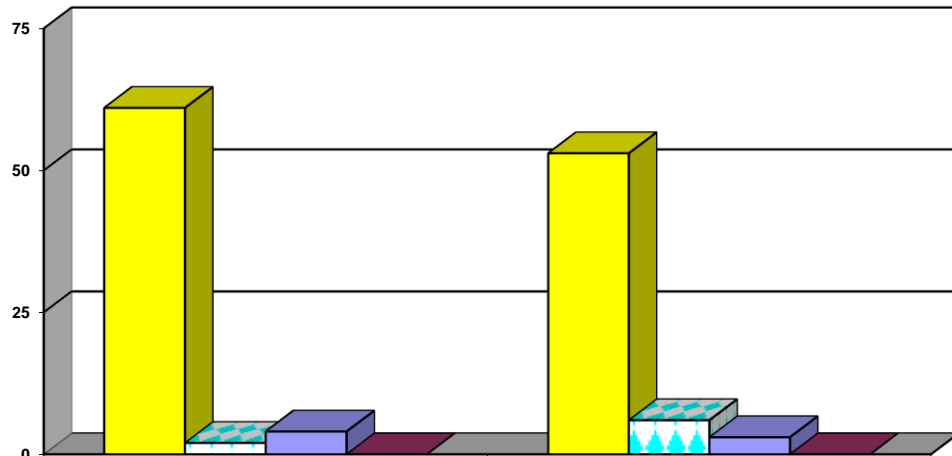
Investigations Completed by Juvenile Division



	Jul, Aug, Sep 2020	Jul, Aug, Sep 2021
Social Histories	18	17
Supplemental Social History	1	0
Remission/Review	12	12



Juvenile Caseload at End of Reporting Periods

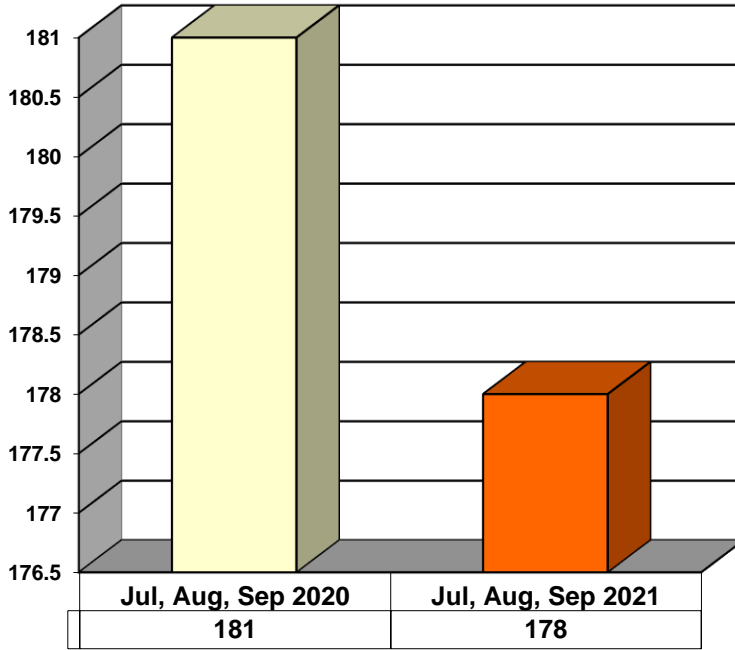


	September 2020	September 2021
Probation	61	53
Continued under Supervision	2	6
Informal	4	3
Other	0	0

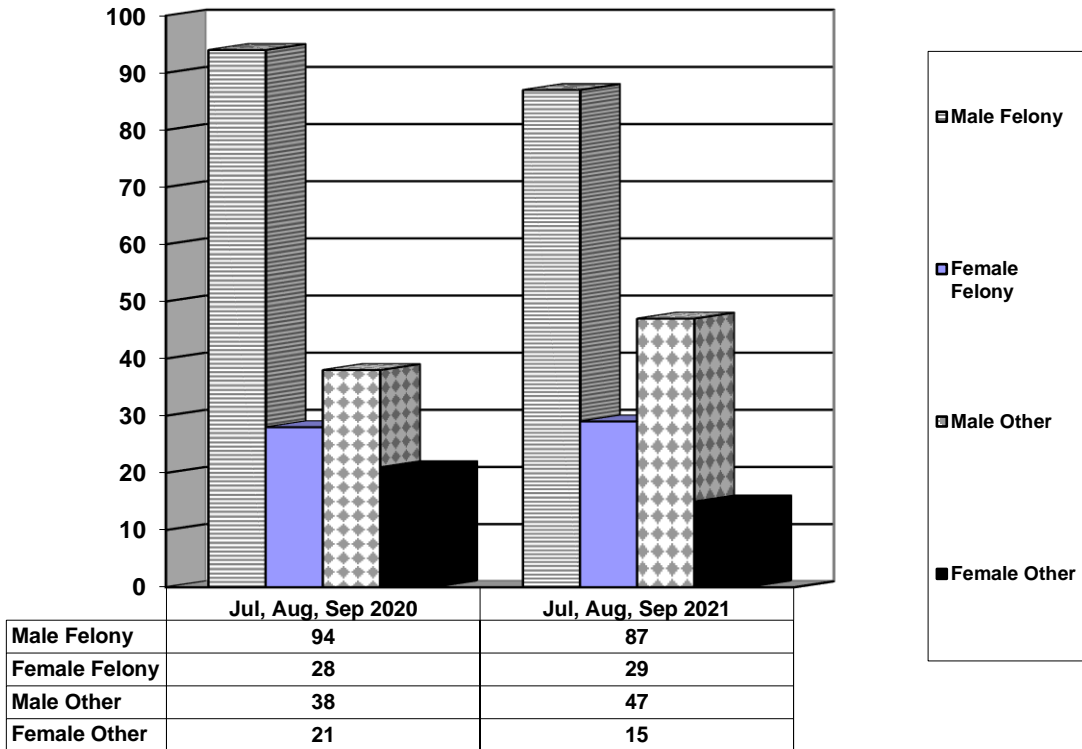


**ADULT SUPERVISION INFORMATION
JULY, AUGUST, AND SEPTEMBER 2021
(Compared to Prior Year)**

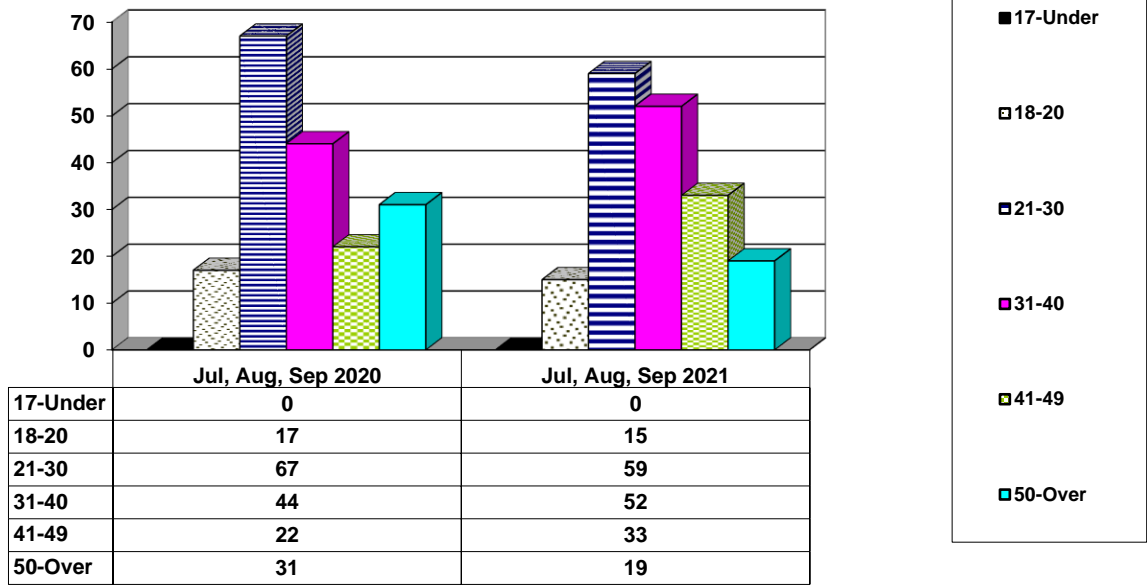
Adult Intakes Completed



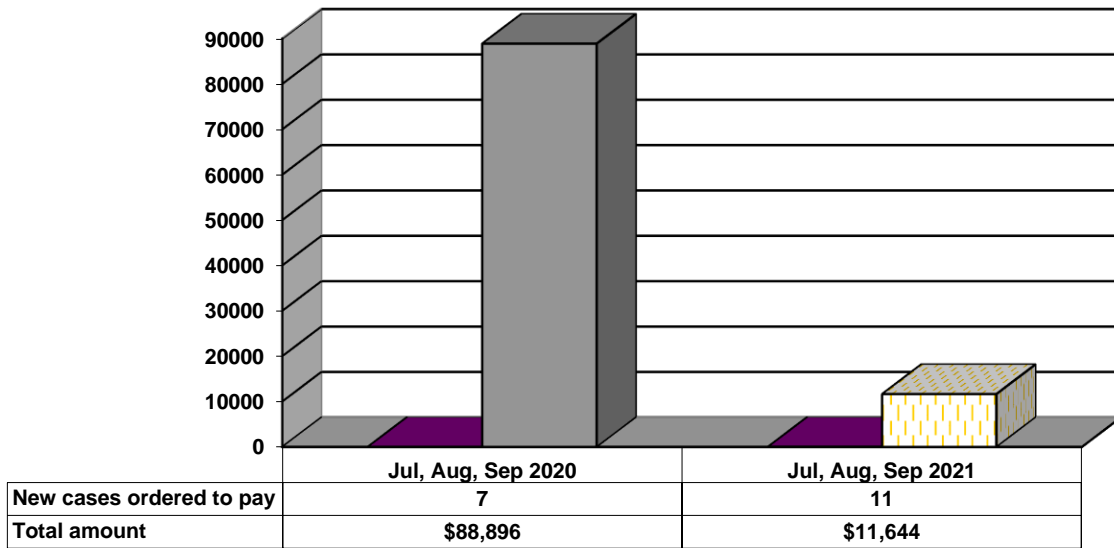
Gender Demographics for Adult Intakes



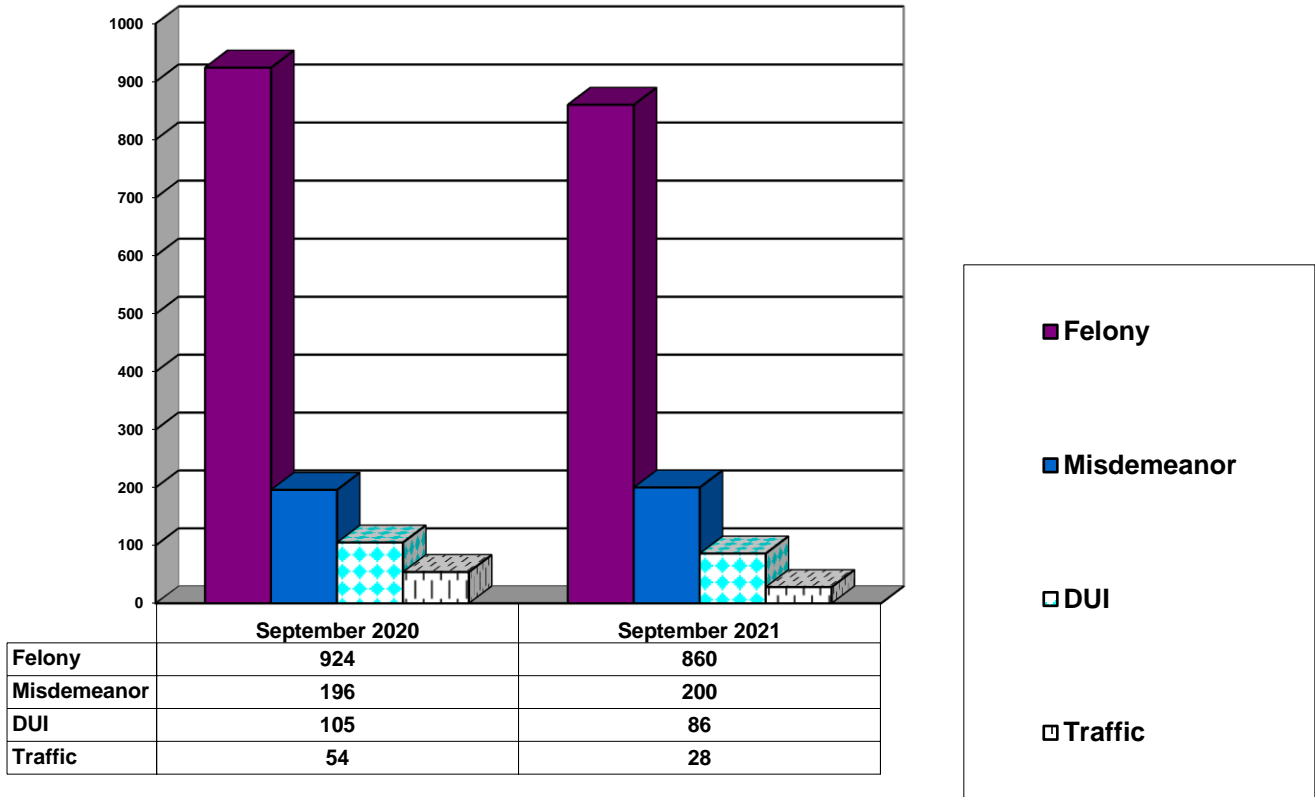
Age Demographics for Adult Intakes



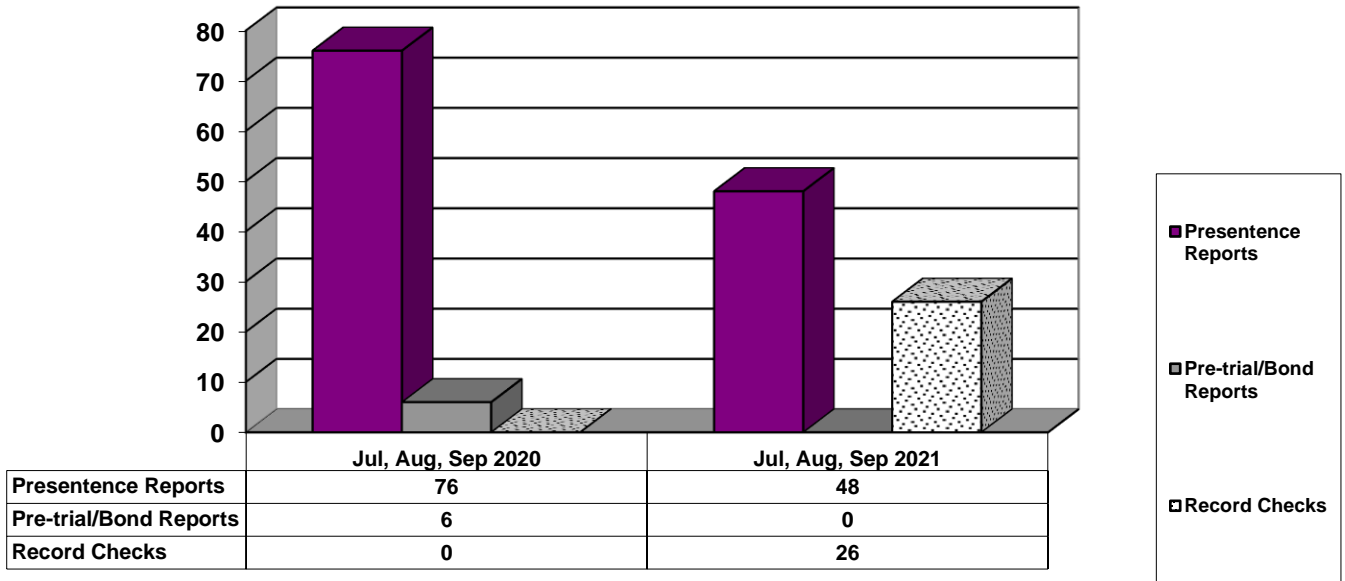
Restitution Ordered in New Adult Cases



Breakdown of Adult Caseload at End of Reporting Periods



Adult Investigations Completed



Commitments to Illinois Department of Corrections

