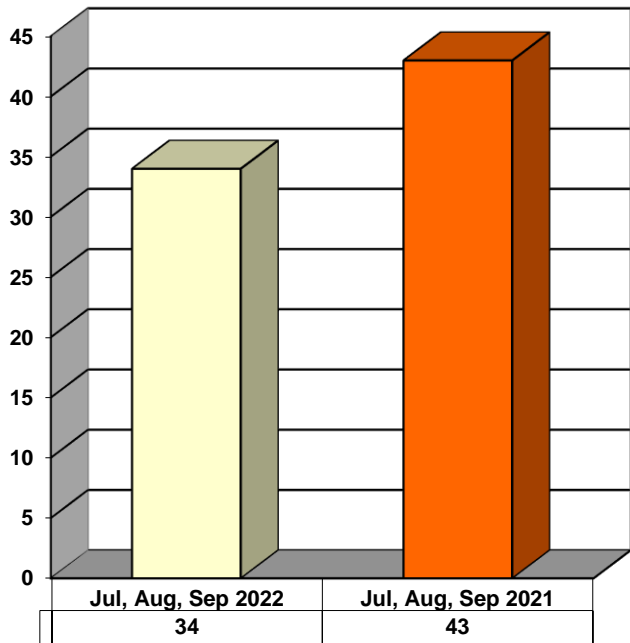
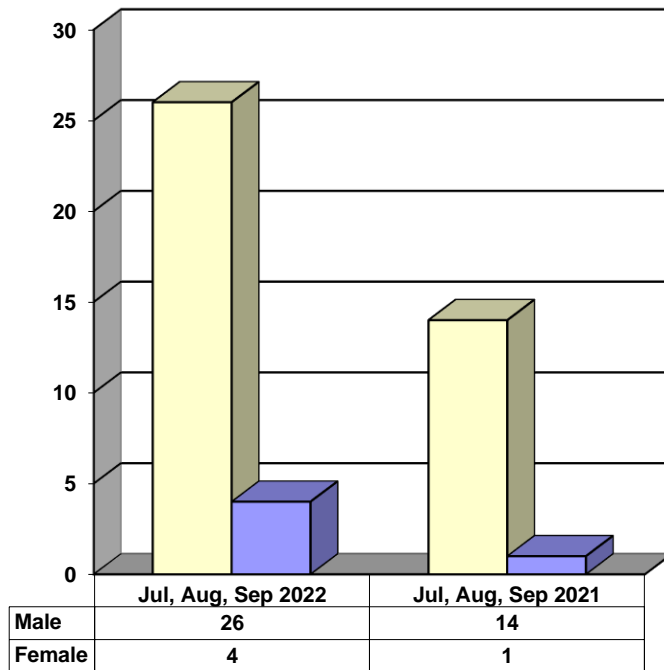


**JUVENILE SUPERVISION INFORMATION
MONTHS OF JULY, AUGUST, AND SEPTEMBER 2022
(Compared to Prior Year)**

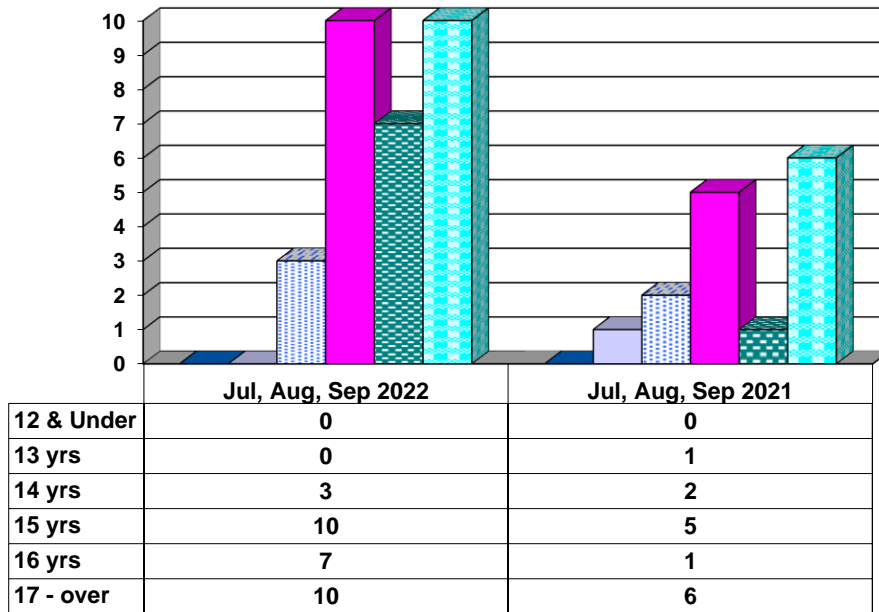
Juvenile Delinquency Petitions Filed



Gender Demographics for Juvenile Admissions

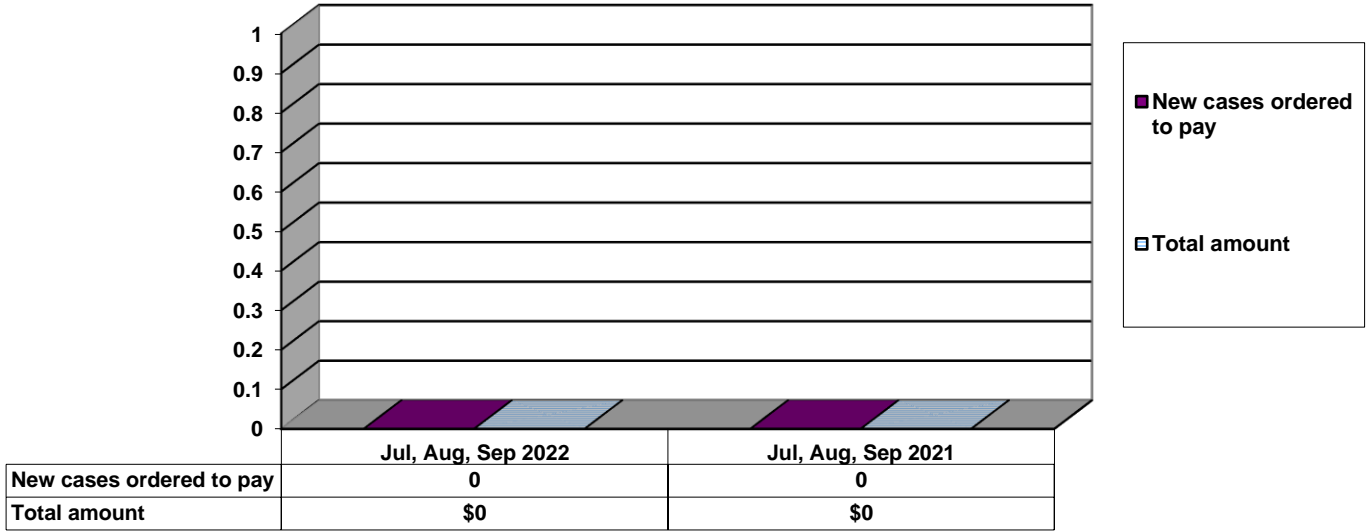


Age Demographics for Juvenile Admissions

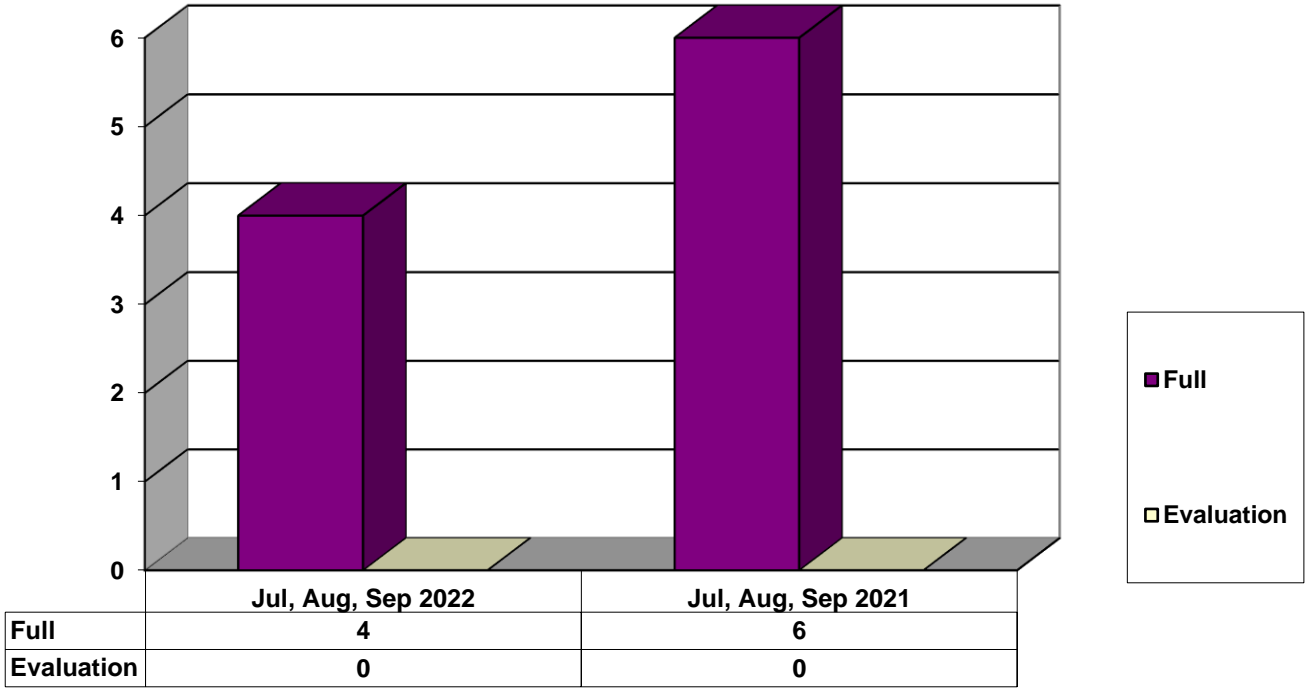


■ 12 & Under
 ■ 13 yrs
 ■ 14 yrs
 ■ 15 yrs
 ■ 16 yrs
 ■ 17 - over

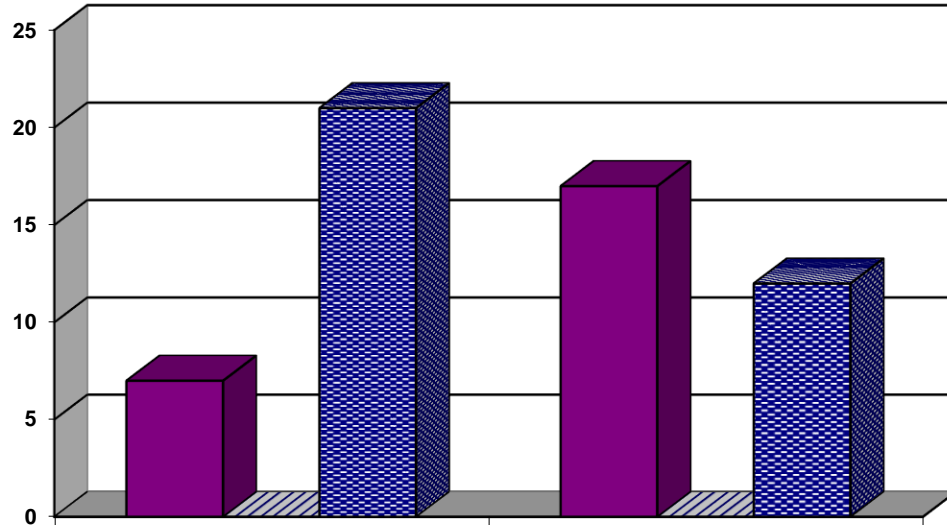
Restitution Ordered in New Juvenile Cases



Commitments to Illinois Department of Juvenile Justice



Investigations Completed by Juvenile Division



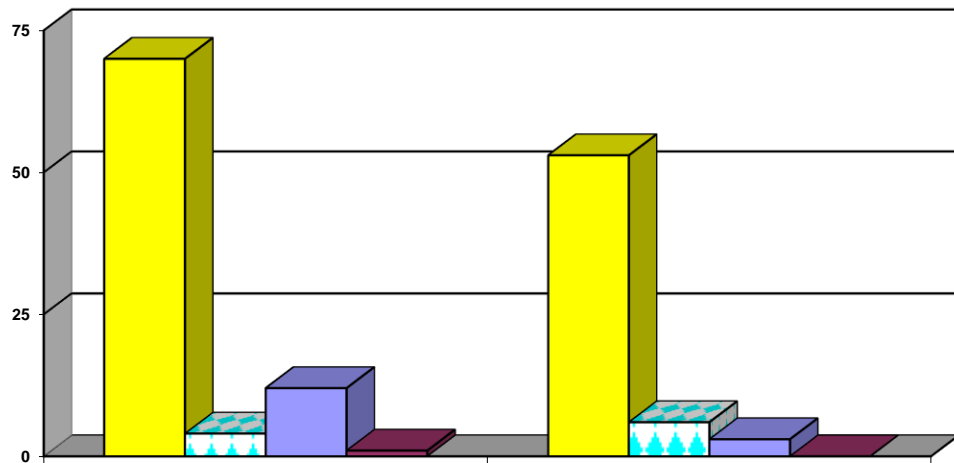
	Jul, Aug, Sep 2022	Jul, Aug, Sep 2021
Social Histories	7	17
Supplemental Social History	0	0
Remission/Review	21	12

■ Social Histories

▨ Supplemental Social History

■ Remission/Review

Juvenile Caseload at End of Reporting Periods



	September 2022	September 2021
Probation	70	53
Continued under Supervision	4	6
Informal	12	3
Other	1	0

■ Probation

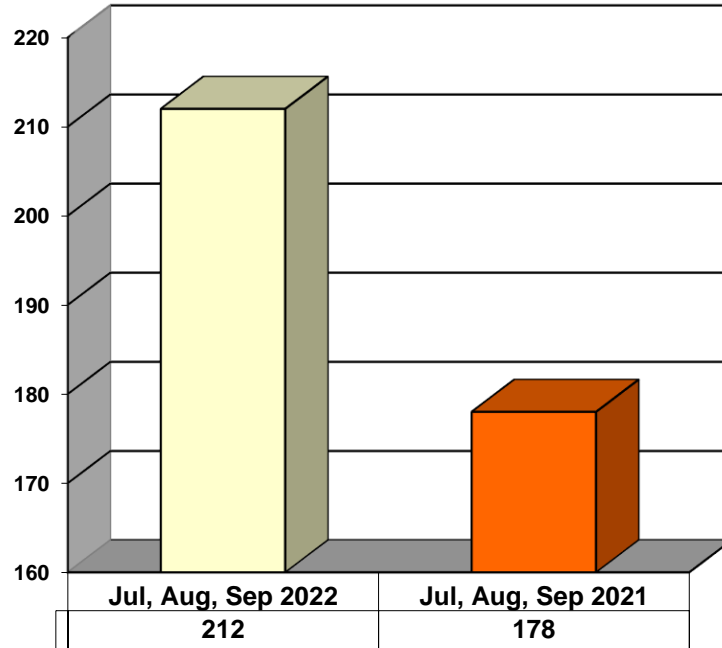
▨ Continued under Supervision

■ Informal

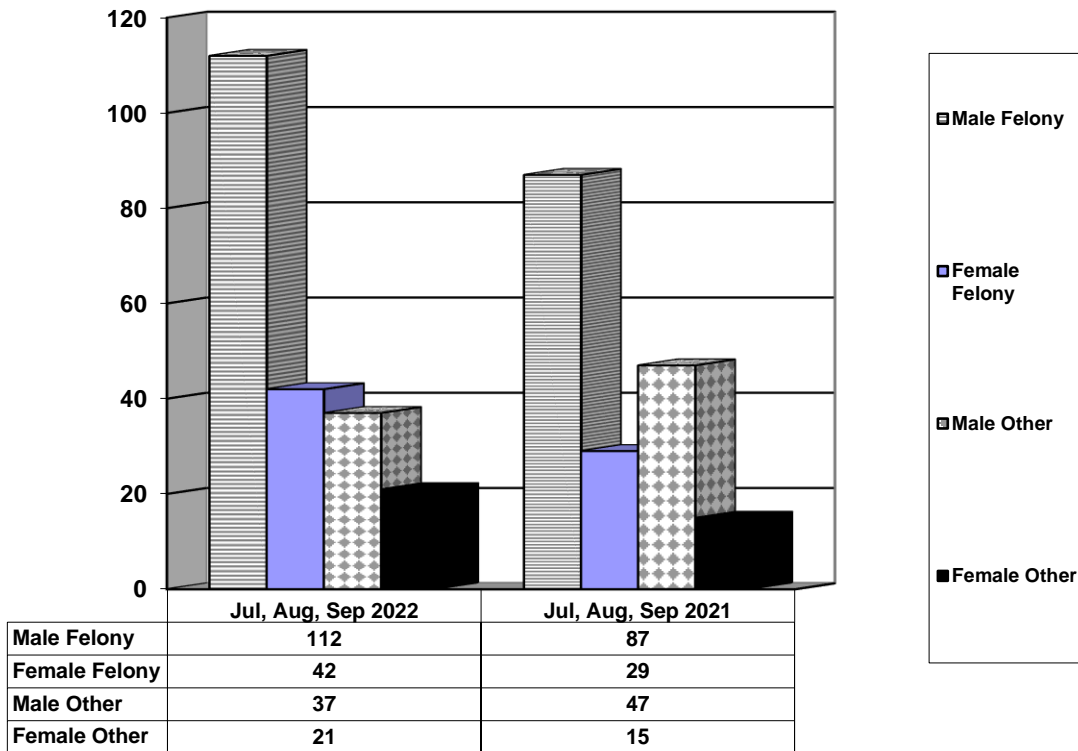
■ Other

**ADULT SUPERVISION INFORMATION
JULY, AUGUST, AND SEPTEMBER 2022
(Compared to Prior Year)**

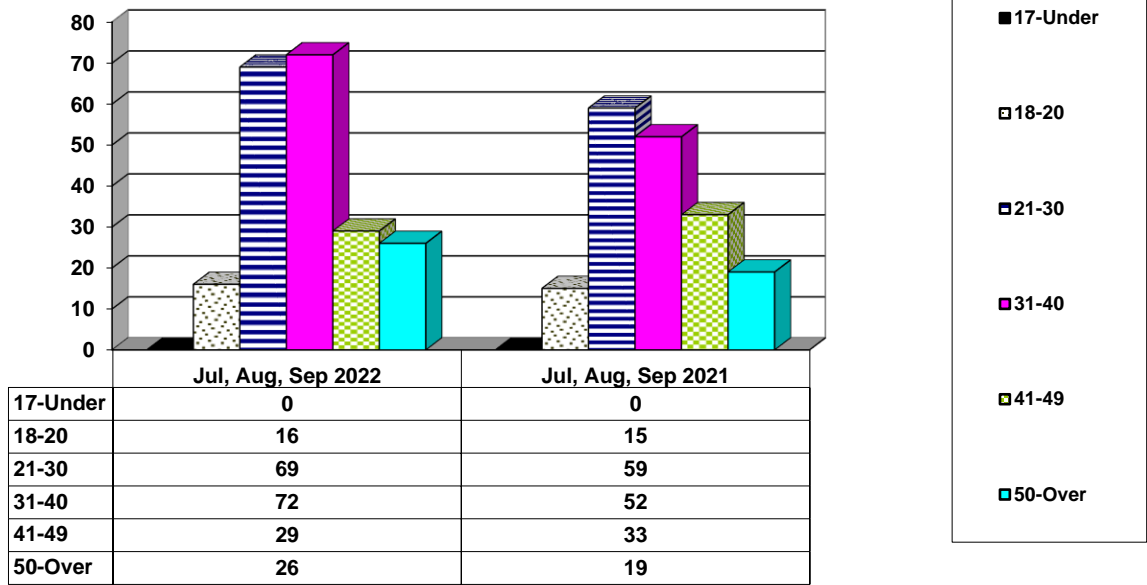
Adult Intakes Completed



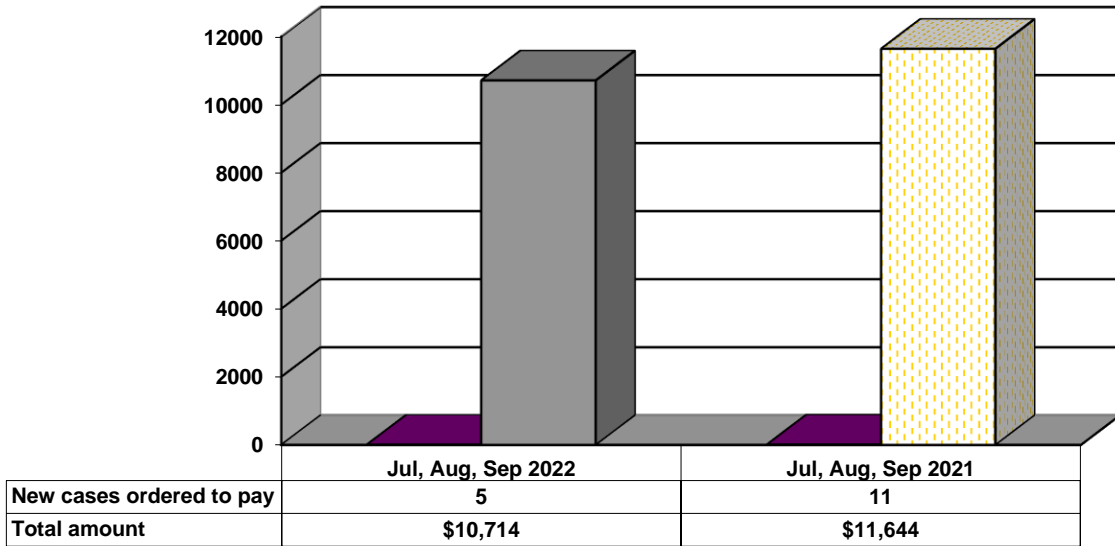
Gender Demographics for Adult Intakes



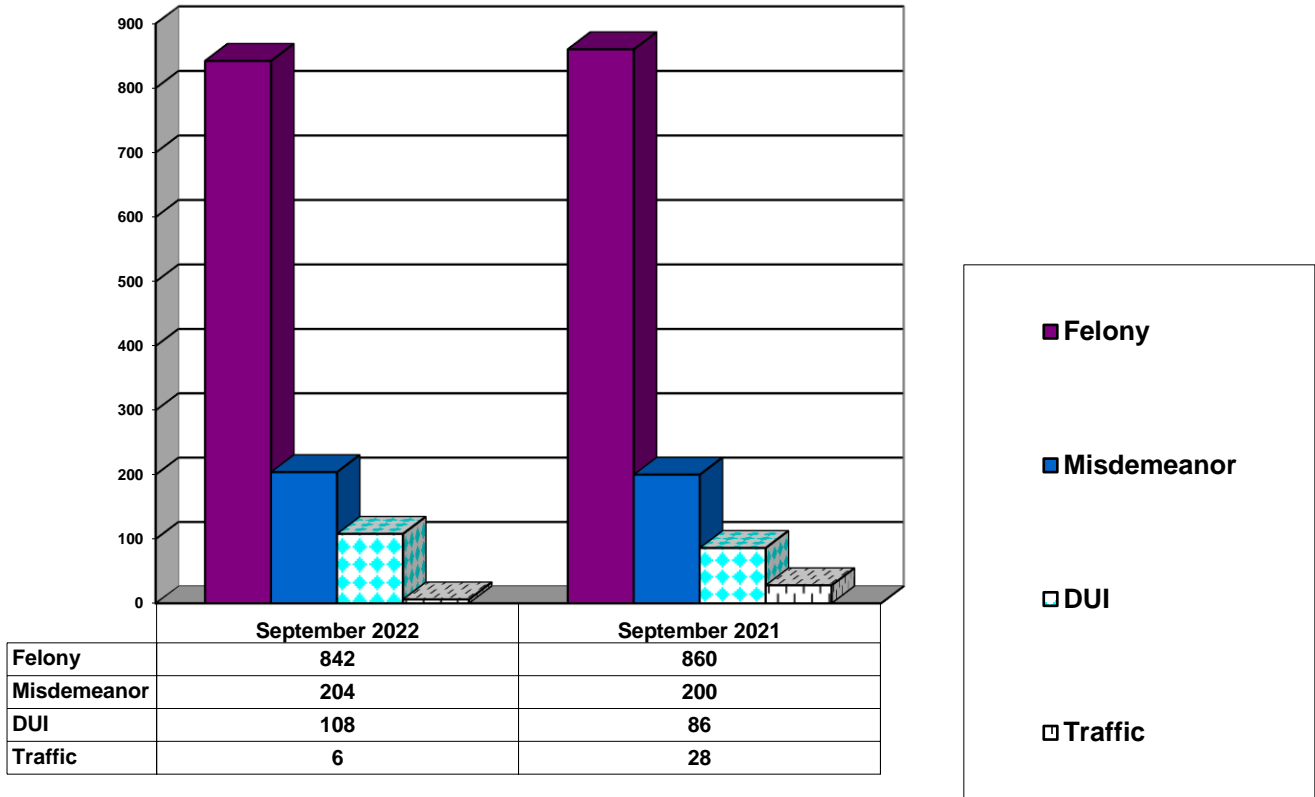
Age Demographics for Adult Intakes



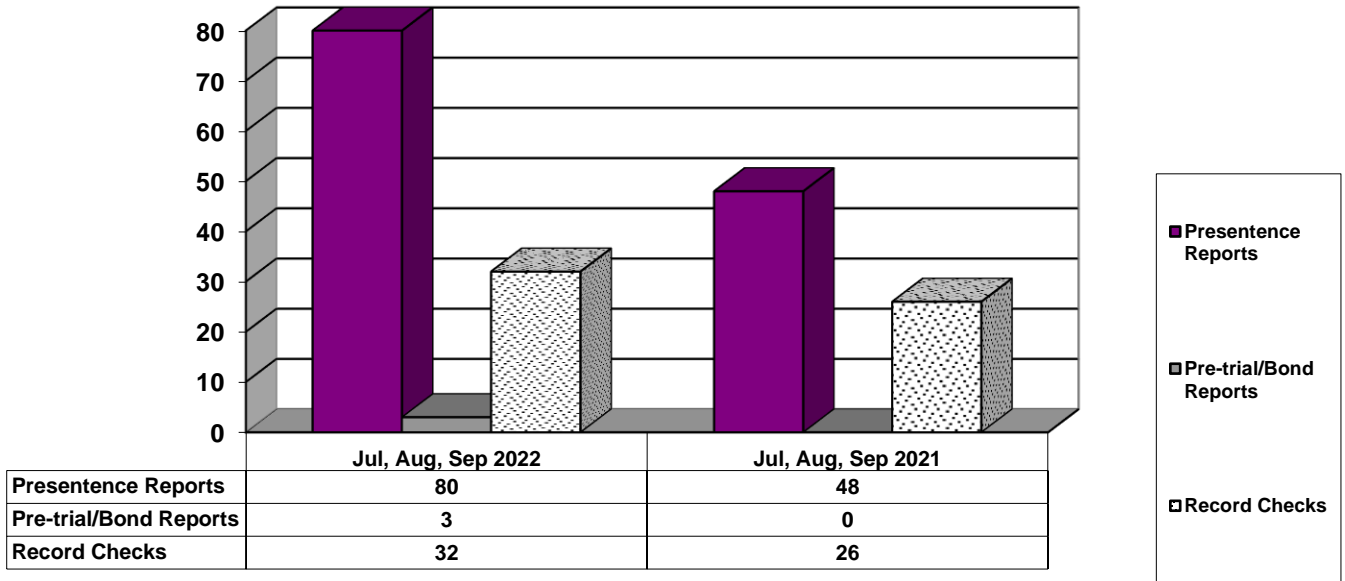
Restitution Ordered in New Adult Cases



Breakdown of Adult Caseload at End of Reporting Periods



Adult Investigations Completed



Commitments to Illinois Department of Corrections

