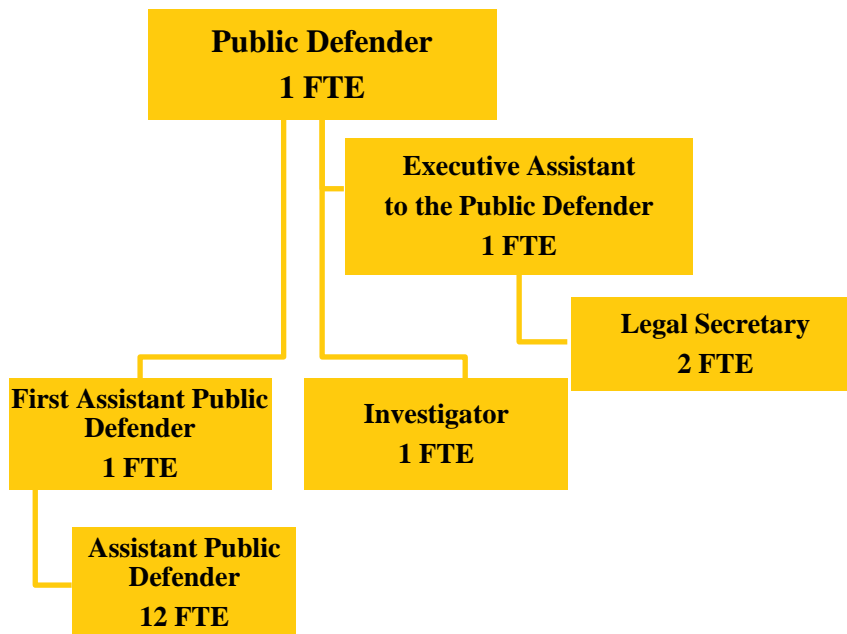


PUBLIC DEFENDER
Fund 080-036



Public Defender positions: 18 FTE

The office, position, and duties of the public defender are statutorily created and defined in the Illinois Counties Code Division 3-4 Public Defender and Appointed Counsel (55 ILCS 5/3-4).

MISSION STATEMENT

To effectively represent indigent persons in criminal, traffic, abuse/neglect, juvenile, and other miscellaneous cases in Champaign County.

BUDGET HIGHLIGHTS

Court Appointed Counsel Fees ordered by the Judiciary resulted in an increase in revenue for FY 2019. It is expected that the revenue for FY2020 will be substantially lower due to the COVID-19 closure of the Courthouse and delays in resolving cases.

FINANCIAL

Fund 080 Dept 036			2019 Actual	2020 Original	2020 Projected	2021 Budget
335	70	STATE SALARY REIMBURSMENT	\$94,479	\$104,248	\$104,248	\$104,248
		FEDERAL, STATE & LOCAL SHARED REVENUE	\$94,479	\$104,248	\$104,248	\$104,248
341	10	COURT FEES AND CHARGES	\$48,007	\$53,000	\$45,000	\$53,000
		FEES AND FINES	\$48,007	\$53,000	\$45,000	\$53,000
FY2021 Budget			193		Public Defender	
Champaign County, Illinois					General Fund 080-036	

369	90	OTHER MISC. REVENUE	\$100	\$0	\$0	\$0
		MISCELLANEOUS	\$100	\$0	\$0	\$0
REVENUE TOTALS			\$142,586	\$157,248	\$149,248	\$157,248
511	2	APPOINTED OFFICIAL SALARY	\$154,763	\$156,371	\$156,371	\$161,065
511	3	REG. FULL-TIME EMPLOYEES PERSONNEL	\$992,203 \$1,146,966	\$1,035,457 \$1,191,828	\$1,035,457 \$1,191,828	\$1,057,305 \$1,218,370
522	1	STATIONERY & PRINTING	\$0	\$500	\$500	\$500
522	2	OFFICE SUPPLIES	\$5,997	\$4,407	\$4,407	\$4,407
522	3	BOOKS,PERIODICALS & MAN.	\$589	\$525	\$525	\$525
522	6	POSTAGE, UPS, FED EXPRESS	\$30	\$0	\$26	\$26
522	15	GASOLINE & OIL	\$220	\$350	\$350	\$350
522	44	EQUIPMENT LESS THAN \$5000 COMMODITIES	\$1,972 \$8,808	\$820 \$6,602	\$820 \$6,628	\$820 \$6,628
533	5	COURT REPORTING	\$883	\$900	\$900	\$900
533	7	PROFESSIONAL SERVICES	\$6,300	\$4,000	\$4,000	\$4,000
533	12	JOB-REQUIRED TRAVEL EXP	\$64	\$82	\$82	\$82
533	29	COMPUTER/INF TCH SERVICES	\$46	\$0	\$0	\$0
533	33	TELEPHONE SERVICE	\$1,613	\$1,900	\$1,900	\$1,900
533	36	WASTE DISPOSAL & RECYCLNG	\$200	\$0	\$0	\$0
533	40	AUTOMOBILE MAINTENANCE	\$152	\$330	\$330	\$330
533	42	EQUIPMENT MAINTENANCE	\$0	\$60	\$60	\$60
533	51	EQUIPMENT RENTALS	\$120	\$120	\$120	\$120
533	68	WITNESS EXPENSE	\$24	\$418	\$418	\$418
533	93	DUES AND LICENSES	\$4,467	\$5,187	\$5,187	\$5,187
533	94	INVESTIGATION EXPENSE	\$239	\$2,500	\$2,500	\$2,500
533	95	CONFERENCES & TRAINING	\$585	\$2,700	\$2,700	\$2,700
534	37	FINANCE CHARGES,BANK FEES SERVICES	\$124 \$14,817	\$0 \$18,197	\$0 \$18,197	\$0 \$18,197
EXPENDITURE TOTALS			\$1,170,591	\$1,216,627	\$1,216,653	\$1,243,195

ALIGNMENT to STRATEGIC PLAN

County Board Goal 1 – Champaign County is committed to being a high performing, open and transparent local government organization

- Provide flexibility in scheduling and communicating with clients to meet their needs
- Provide quality services delivered in a professional manner
- Comply with ethical and continuing legal education requirements established by the Illinois Supreme Court

County Board Goal 3 –Champaign County promotes a safe, just and healthy community

- To zealously defend the rights of indigent persons charged with crimes, and those persons for whom the Court appoints the Public Defender to represent
- Work with justice stakeholders to deal with issues of mutual concern such as technology in the courtroom and jail overcrowding.

DESCRIPTION

The Public Defender’s Office represents individuals who are indigent and cannot afford to hire counsel of their choosing. Cases assigned to the office involve criminal defendants in felony, misdemeanor, traffic, and juvenile delinquency cases. The office also represents parties in abuse and neglect cases, post-conviction matters, sexually dangerous person cases, and occasionally, in child support contempt cases. The Public Defender’s Office has fourteen full-time attorneys, three full-time support staff and one full-time investigator.

OBJECTIVES

To effectively represent indigent persons during all phases of a court case from arraignment through post-conviction proceedings.

PERFORMANCE INDICATORS

Indicator	2019 Actual	2020 Projected	2021 Budgeted
FELONY CASES (criminal & felony traffic – filed as CF)			
Filed with the Circuit Clerk	1851	1800	1900
Opened by the Public Defender	1742	1700	1750
Closed by the Public Defender	1619	1600	1600
MISDEMEANOR CASES (criminal only – filed as CM)			
Filed with the Circuit Clerk	1182	1000	1200
Opened by the Public Defender	1129	950	1100
Closed by the Public Defender	1124	940	1100
TRAFFIC CASES (criminal only – filed as TR and DT) *			
Filed with the Circuit clerk	2998	2800	3000
Opened by the Public Defender (non petty TR and DT)	2885	2600	2900
Closed by the Public Defender	2758	2400	2700
JUVENILE DELINQUENCY CASES (filed as JD and J)			
Filed with the Circuit Clerk	159	160	172
Opened by the Public Defender	162	150	162
Closed by the Public Defender	173	150	170
JUVENILE ABUSE/NEGLECT CASES (filed as JA)			
Filed with the Circuit Clerk	81	100	100
Opened by the Public Defender	125	120	120
Closed by the Public Defender	93	90	90
PROBATION VIOLATIONS (filed as PTR in CF,CM,TR DUI)			
Opened by the Public Defender	332	300	300
Closed by the Public Defender	314	290	290
POST CONVICTION CASES (filed in CF cases)			

Indicator	2019 Actual	2020 Projected	2021 Budgeted
Opened by the Public Defender	4	10	10
Closed by the Public Defender	4	8	8
CONTEMPT CASES (filed as CC)			
Opened by the Public Defender	29	30	30
Closed by the Public Defender	33	30	30

NOTES

- 1) Projected numbers for the Circuit Clerk are based on court filings from January to June 2020 (six months). Projected numbers for the Public Defender are based on reports filed with the County Board for January to June 2020 (six months).
 - 2) In abuse/neglect, two attorneys are appointed in the same case so numbers reflect multiple office “openings” in the same case, which is why there is a discrepancy in the number of cases filed by the Circuit Clerk vs. the number of cases opened by the Public Defender’s Office.
- * Only misdemeanor DUI cases are reflected here since DUIs can be filed as DT or CF and are handled by multiple attorneys. Felony traffic and DUI’s are reflected in the felony statistics.