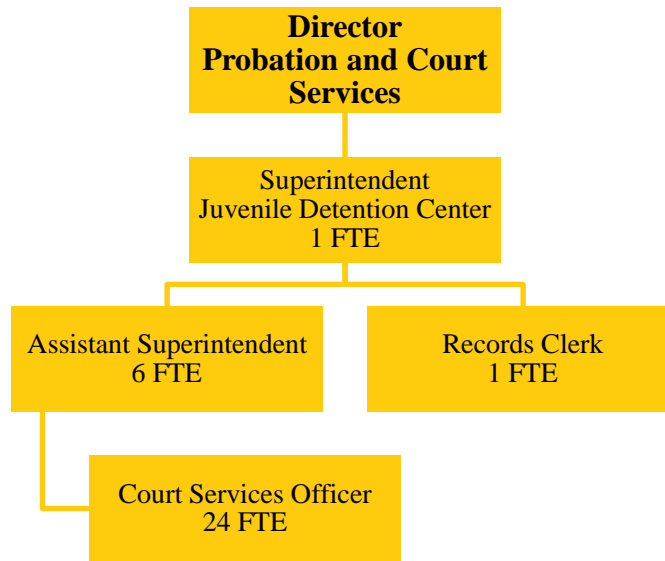


JUVENILE DETENTION CENTER
Fund 080-051



Juvenile Detention Center positions: 32 FTE

MISSION STATEMENT

The Champaign County Probation and Court Services Department is charged with the supervision, education, and care of minors detained at the Juvenile Detention Center. In addition to ensuring the safety of the detainees while in secure care, the Department provides necessary programming to address the special needs of the detainee population. The Department is required to present minors to the Court per statutory guidelines and as ordered by the Court. The Juvenile Detention Center provides these services in accordance with guidelines established by the Illinois Department of Corrections, the Illinois Department of Juvenile Justice, the Administrative Office of the Illinois Courts, Illinois Statutes, and circuit/local judicial requirements.

BUDGET HIGHLIGHTS

To offset operating expenses for the Probation and Court Services Department, the Illinois Supreme Court, through the Administrative Office of the Illinois Courts, provides reimbursement for a portion of personnel costs. The table below sets forth the Department’s salary reimbursement allocations for State Fiscal Years 2015 through 2021 (estimated), together with the Dollar Amount and Percentage of Increase/Decrease as compared to the prior State Fiscal Year. Also included are amounts transferred from the Probation Services Fund (Fund 618) to the General Corporate Fund for salary reimbursement shortfalls in County Fiscal Years 2015 through 2020:

| STATE FISCAL YEAR | FINAL ALLOCATION | INCREASE/ DECREASE | % INCREASE/ DECREASE | AMOUNT TRANSFERRED FROM PROBATION SERVICES FUND |
|-------------------|------------------|--------------------|----------------------|---|
| 2021 | \$2,378,840# | +\$154,496 | +7.2% | \$0 |
| 2020 | \$2,219,344 | +\$682,422 | +44.4% | \$0 |
| 2019 | \$1,536,922 | -\$288,676 | -15.8% | \$323,500 |
| 2018 | \$1,825,598 | -\$130,980 | -6.7% | \$183,500 |

| STATE FISCAL YEAR | FINAL ALLOCATION | INCREASE/ DECREASE | % INCREASE/ DECREASE | AMOUNT TRANSFERRED FROM PROBATION SERVICES FUND |
|--------------------------|-------------------------|---------------------------|-----------------------------|--|
| 2017 | \$1,956,578 | -\$27,682 | -1.4% | \$86,454 |
| 2016 | \$1,984,260 | -\$190,528 | -8.8% | \$129,269 |
| 2015 | \$2,174,788* | +\$497,570 | +29.7% | \$0 |

#Estimated

*Includes Supplemental Allocation to fund the addition of three officers (two at the Juvenile Detention Center and one in the Specialized Services Division of the Adult Probation Division).

The Department’s salary reimbursement allocation for State FY2020 was initially set at \$2,219,344.00 (see below for information on supplemental funding awarded in June 2020). This was an increase of \$682,422.00 (44.4%) from our SFY2019 allocation of \$1,536,922.00 and represented the restoration of “full” funding for probation salary reimbursement. As such, we did not budget any transfers from the Probation Services Fund for salary shortfalls in County FY2020.

Although we have not yet received formal notification of our salary reimbursement allocation for State FY2021 beginning July 1, 2020, the budget approved by the Illinois legislature and signed by the Governor includes full funding for the Illinois Supreme Court in the amount of \$434,679,700. As such, the Administrative Office of the Illinois Courts has indicated that probation departments can expect to receive full funding for salary reimbursement in State FY2021 (see note below). In addition, the Administrative Office of the Illinois Courts recently approved full funding for the salary of the Champaign County Problem-Solving Court Coordinator (which is paid from the Specialty Courts Fund and is funded with proceeds from the Public Safety Sales Tax), as well as the conversion of three Subsidy positions to Grant-In-Aid, retroactive to July 1, 2019. We are estimating that this will result in additional revenue of \$220,900.37 for County FY2019 and FY2020. We are also projecting that this will increase revenue by \$151,880.86 in County FY2021.

NOTE: The Administrative Office of the Illinois Courts defines “full funding” as full reimbursement for the salaries of all Grant-In-Aid positions as well as reimbursement of \$1,000 per month for all Subsidy positions. The Department now has 46 Grant-In-Aid positions (including the Problem-Solving Court Coordinator) and 14 Subsidy positions.

We would note that payments from the State of Illinois are typically delayed for a number of months. For State FY2020 (July 1, 2019 to June 30, 2020), the Department has not yet received payments for the months of January-June 2020.

The staffing level at the Juvenile Detention Center is expected to remain stable for FY2021 with one Superintendent, six Assistant Superintendents, and 24 Detention/Court Services Officers. In addition, the JDC is supported by one Records Clerk.

The table below sets forth the Average Daily Population at the Juvenile Detention Center for the current Fiscal Year, to date, as well as for each of the previous five Fiscal Years, together with the Percentage of Increase/Decrease as compared to the prior Fiscal Year:

| Fiscal Year | Average Daily Population | Increase (+)/Decrease (-) from Prior FY |
|-------------|--------------------------|---|
| 2020 | 15.60* | +12.2% |
| 2019 | 13.90 | -6.7% |

| Fiscal Year | Average Daily Population | Increase (+)/Decrease (-) from Prior FY |
|-------------|--------------------------|---|
| 2018 | 14.90 | -6.8% |
| 2017 | 15.99 | -17.2% |
| 2016 | 19.32 | -1.3% |
| 2015 | 19.58 | +9.6% |
| 2014 | 17.87 | +10.0% |

*To Date

Detainee capacity at the Juvenile Detention Center was reduced in FY2010 to a maximum of 25 minors. Although the reduced capacity has not adversely affected the level of services to the Courts and the community, we would note that the Department incurred a total of \$35,747 in out-of-county boarding expenses from 2011 to 2017 due to overcrowding at the JDC. The Department did not incur any out-of-county boarding expenses in FY2018 and FY2019, or thus far in FY2020.

Legislation effective January 1, 2014 raising the State's juvenile court jurisdiction to include 17-year-old individuals charged with felonies had a measurable impact on the detention population in the first two years following implementation of the legislation. In 2014 and 2015, we saw significant increases in the percentage of 17-year-olds admitted to the Center as compared to 2013. Since 2016, the percentage of 17-year-olds admitted to the Center has returned to pre-2014 levels.

The impact of legislation effective in 2017 prohibiting commitment to the Illinois Department of Juvenile Justice of minors adjudicated for misdemeanor offenses as well as certain Class 3 and Class 4 felony offenses is not yet fully known; however, it would appear that that legislation has not resulted in greater use of local detention resources given that the average daily population at the Juvenile Detention Center declined in each of the past three years.

With the exception of a contractual increase for detainee health care, the Juvenile Detention Center does not anticipate any significant increases in operating expenses for FY2021.

Staff, outside agencies and volunteers provide a wide variety of services and programming for juveniles detained at the Champaign County Juvenile Detention Center. The following is a list of agencies and volunteer organizations that provide services and programming for residents of the Juvenile Detention Center:

- Regional Office of Education for Champaign-Ford Counties: Provides education services throughout the school year and a six-week session of summer school.
- Wellpath, LLC: Provides medical and mental health services to residents of the facility through a contractual agreement with Champaign County.
- Champaign-Urbana Public Health District: Provides education on sexually transmitted diseases and testing for sexually transmitted diseases.
- Rosecrance: Offers substance abuse and mental health counseling.
- Pavilion Behavioral Health Care: Provides mental health services and treatment for detained juveniles.
- Screening Assessment and Support Services (SASS): Sponsored by the Illinois Department of Healthcare and Family Service of Champaign County, SASS provides crisis assessment for detained

minors as well as referral and counseling through a single point of entry known as Crisis and Referral Entry Services (CARES).

- R.A.C.E.S. (Rape Advocacy Counseling & Education Services): Provides education and training for staff and residents on issues related to sexual assault, sexual harassment, and healthy relationships. R.A.C.E.S. also assists with training for staff in fulfilling the requirements of the Prison Rape Elimination Act (PREA).
- University of Illinois, School of Science: The School of Science provides residents with science education and assists them with conducting experiments.
- University of Illinois Extension–Master Gardener Program: The Master Gardener Program provides residents with education and practical exercises in horticulture. Additionally, Master Gardeners, with the assistance of residents, maintain a flower and plant garden at the Juvenile Detention Center and assist residents with planting, growing and harvesting a large vegetable garden at the Juvenile Detention Center. Vegetables and fruits harvested at the Juvenile Detention Center are provided to the residents of the Center for consumption, and are also donated to the Daily Bread Soup Kitchen in Champaign for their clients.
- Illinois Secretary of State’s Office: The Illinois Secretary of State’s Driver’s License Branch provides residents of the facility with information on Rules of the Road, how to obtain a driver’s license, and the dangers of driving under the influence.
- Illinois Balanced and Restorative Justice Initiative (IBARJ): Assists staff and juveniles on restorative justice practices, which includes training and providing technical assistance to staff on how to infuse restorative practices into their daily interaction with residents.
- University of Illinois Students Tutoring Group: A group of volunteer students at the University of Illinois donates their time at the Detention Center, assisting residents with improving their reading, writing and math skills. This group also presents a program in character building to the residents of the facility.
- Yoga Instruction: Mr. Jim Rector teaches residents the art of yoga, including practical yoga instruction.
- Teen Bubble: An organization that originated at the Dane County, Wisconsin, Juvenile Detention Center, Mr. Will Porter teaches residents the history of brass instruments and provides instruction on playing those instruments.
- Religious Programming: Local faith-based organizations provide religious services and/or one-on-one faith-based programming for residents of the facility.

The Juvenile Detention Center plans to add the following programming in the fall of 2020:

- Families Stronger Together (FST): Cunningham Children’s Home’s Families Stronger Together program provides voluntary trauma-informed, culturally responsive, therapeutic services for families – caregivers and their youth – who have entered, or are at risk of entering the juvenile justice system. FST will be able to provide these services to detained youth and their families and will continue to provide those services upon the minor’s release from custody.

FINANCIAL

| Fund 080 Dept 051 | | | 2019 | 2020 | 2020 | 2021 |
|---------------------------|----|---------------------------------------|---------------------|-------------------------|-------------------------|-------------------------|
| | | | Actual | Original | Projected | Budget |
| 331 | 73 | USDA-NAT SCHL LUNCH/SNACK | \$13,396 | \$18,000 | \$18,000 | \$18,000 |
| 331 | 74 | USDA-NAT SCHOOL BREAKFAST | \$7,194 | \$10,000 | \$10,000 | \$10,000 |
| 334 | 62 | ISBE-IL SCHL BRKFST/LUNCH | \$318 | \$400 | \$350 | \$350 |
| 335 | 60 | STATE REIMBURSEMENT | \$1,199,851 | \$1,429,720 | \$1,404,853 | \$1,431,814 |
| | | FEDERAL, STATE & LOCAL SHARED REVENUE | \$1,220,759 | \$1,458,120 | \$1,433,203 | \$1,460,164 |
| 371 | 18 | FROM PROB SERV FUND 618 | \$230,012 | \$0 | \$0 | \$0 |
| | | INTERFUND REVENUE | \$230,012 | \$0 | \$0 | \$0 |
| REVENUE TOTALS | | | \$1,450,771 | \$1,458,120 | \$1,433,203 | \$1,460,164 |
| 511 | 3 | REG. FULL-TIME EMPLOYEES | \$1,395,644 | \$1,459,701 | \$1,459,701 | \$1,522,622 |
| 511 | 4 | REG. PART-TIME EMPLOYEES | \$53,922 | \$0 | \$0 | \$0 |
| 511 | 5 | TEMP. SALARIES & WAGES PERSONNEL | \$0 \$1,449,566 | \$65,210 \$1,524,911 | \$65,210 \$1,524,911 | \$65,210 \$1,587,832 |
| 522 | 1 | STATIONERY & PRINTING | \$0 | \$200 | \$100 | \$200 |
| 522 | 2 | OFFICE SUPPLIES | \$305 | \$1,700 | \$1,500 | \$1,700 |
| 522 | 3 | BOOKS,PERIODICALS & MAN. | \$0 | \$200 | \$100 | \$200 |
| 522 | 6 | POSTAGE, UPS, FED EXPRESS | \$94 | \$50 | \$50 | \$50 |
| 522 | 10 | FOOD | \$4,852 | \$5,000 | \$5,000 | \$5,000 |
| 522 | 11 | MEDICAL SUPPLIES | \$4,144 | \$3,000 | \$3,000 | \$3,000 |
| 522 | 13 | CLOTHING - INMATES | \$3,396 | \$3,500 | \$3,500 | \$3,500 |
| 522 | 14 | CUSTODIAL SUPPLIES | \$547 | \$700 | \$700 | \$700 |
| 522 | 15 | GASOLINE & OIL | \$2,911 | \$5,000 | \$3,000 | \$5,000 |
| 522 | 28 | LAUNDRY SUPPLIES | \$592 | \$1,500 | \$1,500 | \$1,500 |
| 522 | 44 | EQUIPMENT LESS THAN \$5000 | \$2,010 | \$2,000 | \$2,000 | \$2,000 |
| 522 | 90 | ARSENAL & POLICE SUPPLIES | \$260 | \$200 | \$300 | \$200 |
| 522 | 91 | LINEN & BEDDING | \$86 | \$1,000 | \$1,000 | \$1,000 |
| 522 | 93 | OPERATIONAL SUPPLIES COMMODITIES | \$3,796 \$22,993 | \$4,000 \$28,050 | \$4,000 \$25,750 | \$4,000 \$28,050 |
| 533 | 6 | MEDICAL/DENTAL/MENTL HLTH | \$130,092 | \$132,680 | \$134,750 | \$141,275 |
| 533 | 7 | PROFESSIONAL SERVICES | \$0 | \$300 | \$0 | \$300 |
| 533 | 12 | JOB-REQUIRED TRAVEL EXP | \$0 | \$250 | \$0 | \$250 |
| 533 | 16 | OUTSIDE PRISON BOARDING | \$0 | \$20,000 | \$10,000 | \$20,000 |
| 533 | 33 | TELEPHONE SERVICE | \$1,040 | \$1,700 | \$1,500 | \$1,700 |
| 533 | 36 | WASTE DISPOSAL & RECYCLNG | \$0 | \$200 | \$200 | \$200 |
| 533 | 40 | AUTOMOBILE MAINTENANCE | \$168 | \$1,000 | \$1,000 | \$1,000 |
| 533 | 42 | EQUIPMENT MAINTENANCE | \$0 | \$2,000 | \$2,000 | \$2,000 |
| 533 | 51 | EQUIPMENT RENTALS | \$0 | \$150 | \$0 | \$150 |
| 533 | 70 | LEGAL NOTICES,ADVERTISING | \$221 | \$250 | \$250 | \$250 |
| 533 | 95 | CONFERENCES & TRAINING | \$2,541 | \$3,000 | \$3,000 | \$3,000 |
| 534 | 11 | FOOD SERVICE | \$30,047 | \$42,700 | \$35,000 | \$42,700 |
| 534 | 40 | CABLE/SATELLITE TV EXP SERVICES | \$146 \$164,255 | \$160 \$204,390 | \$160 \$187,860 | \$160 \$212,985 |
| EXPENDITURE TOTALS | | | \$1,636,814 | \$1,757,351 | \$1,738,521 | \$1,828,867 |

ALIGNMENT to STRATEGIC PLAN

County Board Goal 1 – Champaign County is committed to being a High Performing, Open and Transparent Local Government Organization

- Fully utilize the Public Service Work program for basic maintenance services at the Champaign County Courthouse and other county facilities, providing relief to the General Corporate Fund.
- Continue to utilize the Public Service Work program to provide essential labor and support for community not-for-profit agencies and organizations.
- Participate in community programming to share resources available in, and to, the Department
- Conduct tours of facilities on a regular basis for members of the community.
- Develop and offer criminal justice system training presentations for local area schools and/or groups.

County Board Goal 3 –Champaign County Promotes a Safe, Just and Healthy Community

- Provide services to clients to promote their successful transition to healthy, safe and productive lifestyles, including cognitive group programming.
- Provide monitoring services to probationers and individuals on electronic home confinement.
- Provide resources for the GPS surveillance of offenders in the community.

DESCRIPTION

There are three categories of juveniles processed at the Juvenile Detention Center:

1. Juveniles who are brought in and released without an intake being completed;
2. Juveniles admitted through a formal intake process and released without a detention hearing; and
3. Juveniles admitted through a formal intake and ultimately detained.

Each staff member at the Juvenile Detention Center places a priority on addressing the first group of juveniles. Prior to being released from the facility, every attempt is made to identify services available in the community that may assist the juvenile and/or the juvenile’s family. Although we may have no legal relationship with the minor/family, local social service agency information is provided to assist the minor and his/her family. The JDC also coordinates efforts with the Youth Assessment Center to ensure that youths who are being diverted from formal delinquency proceedings through referrals to the Youth Assessment Center receive necessary and appropriate services.

Staff members at the Juvenile Detention Center utilize a standardized scoring instrument to screen all juveniles who go through the formal intake process. This instrument is completed at intake, with the results providing a basis for the decision to detain, or not to detain, the juvenile.

For detained juveniles, the Juvenile Detention Center provides a wide range of services to support each juvenile’s physical, emotional, social development, and educational needs. Detention Center staff members perform numerous roles to include security monitor, counselor, disciplinarian, activity coordinator, and recorder of behavior.

OBJECTIVES

1. All detainees have their needs met in an appropriate manner
2. All training objectives are met for staff
3. Programming opportunities are maximized
4. Services provided satisfy requirements of state agencies and local judiciary

PERFORMANCE INDICATORS

| Indicator | 2019 Actual | 2020 Projected | 2021 Budgeted |
|---|------------------------|---------------------------|--------------------------|
| Number of Minors Presented for Possible Admission (includes Minors Detained by Court Order or Warrant) | 455 | 400 | 450 |
| Number of Admissions to Juvenile Detention Center (includes Minors Detained by Court Order or Warrant) | 285 | 260 | 275 |
| Percentage of Minors Admitted to Detention with a Prior Admission | 71.6% | 72.5% | 72.0% |
| Number of Minors Screened & Released Without Detention | 170 | 135 | 150 |
| Average Daily Population | 13.9 | 15.0 | 15.0 |