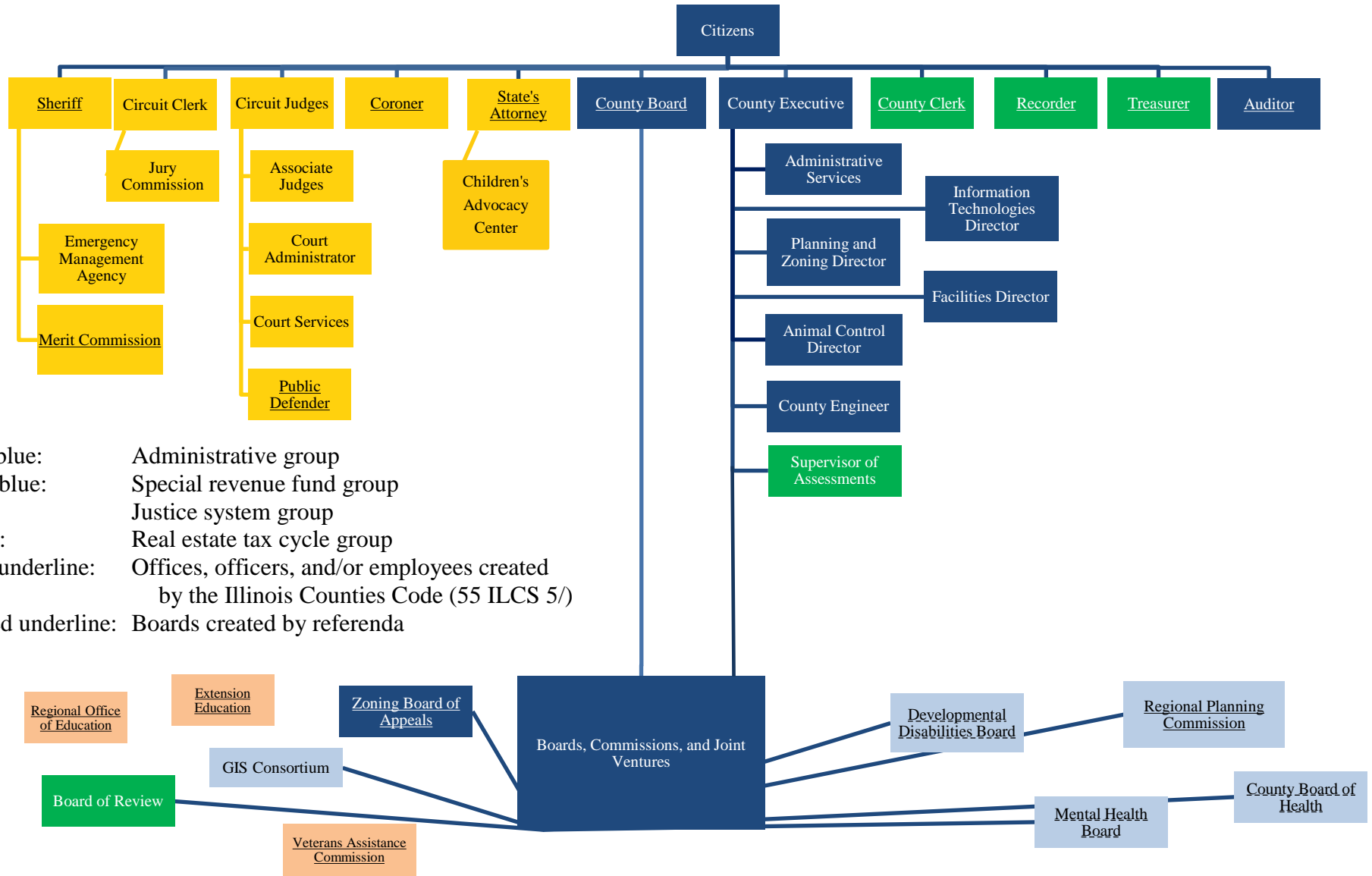


CHAMPAIGN COUNTY ORGANIZATION CHART



Dark blue: Administrative group
 Light blue: Special revenue fund group
 Gold: Justice system group
 Green: Real estate tax cycle group
 Solid underline: Offices, officers, and/or employees created by the Illinois Counties Code (55 ILCS 5/)
 Dashed underline: Boards created by referenda