

# CCMHB

## Champaign County Mental Health Board

---

In fulfillment of our responsibilities under the Community Mental Health Act, the Champaign County Mental Health Board (CCMHB) presents the following documents for public review:

The CCMHB's Annual Report provides an accounting to the citizens of Champaign County of the CCMHB's activities and expenditures during the period of January 1, 2021 through December 31, 2021.

The CCMHB's Three-Year Plan for the period January 1, 2022 through December 31, 2024 presents the CCMHB's goals for development of Champaign County's system of community mental health, intellectual and developmental disabilities, and substance use disorder services and facilities, with One-Year Objectives for January 1, 2022 through December 31, 2022.

Any questions or comments regarding the CCMHB's activities or the county's behavioral health and developmental disability services can be directed to the Champaign County Mental Health Board; 1776 E. Washington; Urbana, IL 61802; phone (217) 367-5703, fax (217) 367-5741.

---

**Champaign County Mental Health Board**

**Fiscal Year 2021 Annual Report & Three-Year Plan 2022-2024**

**Table of Contents**

Board and Staff Listing	1
President's Report	2
Section I: Financial Reports and Service Data	3
Financial Report	4
CILA Financial Report	5
Program Allocations	6-7
Service Totals	8
Utilization Summaries	9-21
Funding Distribution Charts	22
Service Demographics Charts	23-24
Section II: Three-Year Plan 2022-2024	25-37
Three-Year Plan with FY22 Objectives	

# **LISTING OF 2021 BOARD MEMBERS AND STAFF**

## **BOARD MEMBERS**

Mr. Joseph Omo-Osagie, President

Dr. Jon Paul Youakim, Vice President

Dr. Susan Fowler

Mr. Matthew A. Hausman

Dr. Daphne Maurer

Dr. Thom Moore (to February 2021)

Ms. Elaine Palencia

Mr. Kyle Patterson

Dr. Julian Rappaport

Ms. Jane Sprandel

Ms. Kathleen Wirth-Couch (to February 2021)

## **STAFF MEMBERS**

Lynn Canfield  
Executive Director

Kim Bowdry  
Associate Director for Intellectual and Developmental Disabilities

Leon Bryson  
Associate Director for Mental Health & Substance Use Disorder Services (March 2021)

Mark J. Driscoll  
Associate Director for Mental Health & Substance Use Disorder Services (to March 2021)

Stephanie Howard-Gallo  
Operations & Compliance Coordinator

Shandra Summerville  
Cultural & Linguistic Competence Coordinator

Chris Wilson  
Financial Manager

## CCMHB President's Report

As President, it is my pleasure on behalf of the Champaign County Mental Health Board (CCMHB/Board) to present to the citizens of Champaign County the 2021 Annual Report. Per the Illinois Community Mental Health Act (405 ILCS 20/), this fulfills the annual financial reporting requirement, with accounting of 2021 revenues and expenditures, allocation amounts for community agencies by program, and costs of the CILA project, a collaboration with the Champaign County Board for Care of Persons with a Developmental Disability (CCDDB). Detailed descriptions of funded program services and reported utilization are also offered, with charts aggregating reported service data and the commitment of financial resources. Closing out the report is a new Three-Year Plan with Fiscal Year 2022 Objectives. Incorporated into this strategic plan is a Theory of Change Logic Model, developed by the Board and staff with support from University of Illinois Department of Psychology researchers who have engaged in an evaluation capacity building project with agencies for six years.

In September, the CCMHB completed a community needs assessment, the framework for the new Plan and the annual funding priorities. The full assessment report is available in English and Spanish:  
[https://www.co.champaign.il.us/MHBDDDB/PDFS/Full\\_2021\\_Community\\_Needs\\_Report\\_ENGLISH.pdf](https://www.co.champaign.il.us/MHBDDDB/PDFS/Full_2021_Community_Needs_Report_ENGLISH.pdf)  
[https://www.co.champaign.il.us/MHBDDDB/PDFS/Full\\_2021\\_Community\\_Needs\\_Report\\_ESPANOL.pdf](https://www.co.champaign.il.us/MHBDDDB/PDFS/Full_2021_Community_Needs_Report_ESPANOL.pdf)

In July, due to persistent staffing shortages in I/DD direct care, the CCMHB and CCDDB chose to sell the two properties which had served as small group homes (CILAs). One house was sold in September. The other became vacant in July and required repairs which continued through the year.

Notably, 2021 was the second full year of the global COVID-19 pandemic, contributing to a behavioral health crisis across the country. Trauma, grief, and disruption have taken an especially high toll on children and youth. Meanwhile provider agencies continued to operate in a challenging fiscal and regulatory environment, with a growing workforce shortage, inadequate state reimbursement rates, and barriers related to Medicaid managed care and 'siloes' payment systems. Meeting the emerging needs will require substantial focus and investment in our community-based systems. To offer some stability for continuing programs, the Board awarded two-year contracts to ten of the funded agency programs for the program year ending June 30 and to twenty-one for the program year beginning July 1. Although the amount of funding awarded to agencies increased for the eighth year, additional one-time funding from Champaign County helped meet the growing need through new and expanded programs.

Now is the time to make a real investment in our community! In March 2021, the Federal Government passed the American Rescue Plan Act (ARPA) which included federal investments and opportunities to advance mental health policies and resources at the local and state level. This legislation provided much-needed support to strengthen Champaign County's system of care. Half of the \$770,436 which was transferred to the CCMHB supported programs from July 1 to December 31, and the other half will be spent in 2022. This fiscal relief funding created an opportunity for new providers to help fill in the gaps of services. The established providers with expanded mental health and substance use services can provide staff training, fill professional positions, develop crisis mobile response teams, and offer immediate quality care and program resources to members of our community.

In closing, I want to thank you for your interest in the work of the CCMHB. What has been accomplished would not be possible without the commitment of my fellow volunteer board members, including outgoing members Dr. Julian Rappaport and Dr. Susan Fowler, and the dedicated staff team.

Respectfully,



Joseph Omo-Osagie (Mar 3, 2022 09:19 CST)

Joseph Omo-Osagie

CCMHB President, 2021

**SECTION I: Financial Reports and Service Data**

**CHAMPAIGN COUNTY MENTAL HEALTH BOARD**

**ANNUAL FINANCIAL REPORT**

**1/1/21 - 12/31/21**

	2020	2021
<b>Beginning of the Year Fund Balance</b>	\$ 3,440,634	\$ 3,268,719
<b>REVENUE</b>		
<b>General Property Taxes</b>	\$ 4,802,522	\$ 5,278,325
<b>Back Taxes, Mobile Home Tax &amp; Payment in Lieu of Taxes</b>	-	-
	1,088	3,679
<b>Local Government Revenue</b>		
<b>Champ County Developmental Disabilities Board</b>	346,706	366,344
<b>Interest Earnings</b>	7,627	1,343
<b>Gifts and Donations</b>	2,900	100
<b>Disability Expo</b>	13,805	100
<b>Miscellaneous</b>	-	2,205
<b>American Rescue Plan Act**</b>	-	770,436
<b>TOTAL REVENUE</b>	<u>\$ 5,174,648</u>	<u>\$ 6,422,532</u>
<b>EXPENDITURES</b>		
<b>Administration &amp; Operating Expenses:</b>		
<b>Personnel</b>	\$ 544,001	\$ 564,542
<b>Commodities</b>	12,362	8,632
<b>Services</b>	288,560	295,970
<b>Interfund Transfers*</b>	5,819	972
<b>Capital Outlay</b>	-	-
<b>Sub-Total</b>	<u>\$ 850,742</u>	<u>\$ 870,116</u>
<b>Grants and Contributions:</b>		
<b>Program</b>	4,495,820	5,063,438
<b>Capital</b>	-	-
<b>Sub-Total</b>	<u>\$ 4,495,820</u>	<u>\$ 5,063,438</u>
<b>TOTAL EXPENDITURES</b>	<u>\$ 5,346,562</u>	<u>\$ 5,933,554</u>
<b>Fund Balance at the End of the Fiscal Year</b>	<u>\$ 3,268,719</u>	<u>\$ 3,757,698</u>

\*\* ARPA Funds were received in full, but only half expended in 2021. The other half will be disbursed in 2022.

\*to CILA fund and to CCDDDB fund for share of revenue from Expo donations and miscellaneous

# CHAMPAIGN COUNTY CILA FACILITIES

## ANNUAL FINANCIAL REPORT

1/1/21 - 12/31/21

REVENUE	2020	2021
From Mental Health Board	\$ -	\$ -
From Developmental Disabilities Board	\$ 50,000.00	\$ 50,000.00
Rent	\$ 16,500.00	\$ 2,926.56
Other Misc Revenue	\$ 1,995.46	\$ 179.93
Sale of Fixed Asset	\$ -	\$ 226,017.05
<b>TOTAL REVENUE</b>	<b>\$ 68,495.46</b>	<b>\$ 279,123.54</b>

### EXPENDITURES

Mortgage Principal	\$ -	\$ -
Mortgage Interest	\$ -	\$ -
Commodities	\$ 5,536.60	\$ 6,283.30
Professional Fees	\$ 6,000.00	\$ 3,372.66
Utilities	\$ 738.58	\$ 2,590.06
Building/Landscaping Maintenance	\$ 13,697.45	\$ 19,398.67
Building Improvements	\$ -	\$ 14,432.00
Other Services	\$ 2,653.12	\$ 1,904.50
<b>TOTAL EXPENDITURES</b>	<b>\$ 28,625.75</b>	<b>\$ 47,981.19</b>

**CHAMPAIGN COUNTY MENTAL HEALTH BOARD  
PROGRAM ALLOCATIONS -- FY2021  
1/1/21 - 12/31/21**

<b>AGENCY/PROGRAM</b>	<b>TOTAL PAID</b>
<b>CHAMPAIGN COUNTY CHILDREN'S ADVOCACY CENTER</b>	
Children's Advocacy Center	54,590.00
<b>CHAMPAIGN COUNTY CHRISTIAN HEALTH CENTER</b>	
Mental Health Care	23,002.00
<b>CHAMPAIGN COUNTY HEALTH CARE CONSUMERS</b>	
CHW Outreach and Benefit Enrollment	79,116.00
Disability Services (6 months)	35,748.00
Justice Involved CHW Services & Benefits	76,268.00
<b>Agency Total</b>	191,132.00
<b>CHAMPAIGN COUNTY REGIONAL PLANNING COMMISSION</b>	
Headstart - Early Childhood Mental Health Services	268,136.00
Headstart - Social/Emotional Development Services (6 months)**	49,809.00
Homeless Services System Coordination	51,906.00
Justice Diversion Program	141,632.00
Youth Assessment Center	76,350.00
<b>Agency Total</b>	587,833.00
<b>COMMUNITY SERVICE CENTER OF NORTHER CHAMPAIGN COUNTY</b>	
Resource Connection	68,104.00
<b>COURAGE CONNECTION</b>	
Courage Connection	127,000.00
<b>CRISIS NURSERY</b>	
Beyond Blue Champaign County	82,500.00
<b>CUNNINGHAM CHILDREN'S HOME</b>	
ECHO Housing and Employment Support	101,604.00
Families Stronger Together	403,106.00
<b>Agency Total</b>	504,710.00
<b>DEVELOPMENTAL SERVICES CENTER</b>	
Family Development Center **	596,522.00
<b>DON MOYER BOYS &amp; GIRLS CLUB</b>	
CU Neighborhood Champions	110,099.00
Community Coalition Summer Youth Programs	107,000.00
CU Change	100,000.00
Youth and Family Services	160,000.00
<b>Agency Total</b>	477,099.00
<b>DREAAM HOUSE</b>	
DREAAM	90,000.00
<b>EAST CENTRAL ILLINOIS REFUGEE ASSISTANCE CENTER</b>	
Family Support and Strengthening	59,220.00
<b>FAMILY SERVICE</b>	
Counseling	30,000.00
Self Help Center	28,684.00
Senior Counseling and Advocacy	162,350.00
<b>Agency Total</b>	221,034.00
<b>FIRST FOLLOWERS</b>	
FirstSteps Community Re-Entry House	39,546.00



**CHAMPAIGN COUNTY MENTAL HEALTH BOARD  
PROGRAM ALLOCATIONS -- FY2021  
1/1/21 - 12/31/21**

<u>AGENCY/PROGRAM</u>	<u>TOTAL PAID</u>
Peer Mentoring for Re-entry	95,000.00
<b>Agency Total</b>	<b>134,546.00</b>
<b>GROW IN ILLINOIS</b>	
Peer Support	77,239.00
<b>MAHOMET AREA YOUTH CLUB</b>	
BLAST	15,000.00
Members Matter!	19,952.00
<b>Agency Total</b>	<b>34,952.00</b>
<b>NATIONAL ALLIANCE ON MENTAL ILLINOIS</b>	
NAMI Champaign County (6 months)	5,002.00
<b>PROMISE HEALTHCARE</b>	
Mental Health Services with Promise	351,526.00
Promise Healthcare Wellness	72,044.00
<b>Agency Total</b>	<b>423,570.00</b>
<b>RAPE ADVOCACY COUNSELING EDUCATION SERVICES</b>	
Sexual Violence Prevention Education	63,000.00
<b>RATTLE THE STARS</b>	
Youth Suicide Prevention Education (9 months)	64,876.00
<b>ROSECRANCE CENTRAL ILLINOIS</b>	
Criminal Justice PSC	304,350.00
Crisis, Access, & Benefits	203,960.00
Fresh Start	82,362.00
Prevention Services	60,000.00
Recovery Home	200,000.00
Specialty Courts	186,236.00
<b>Agency Total</b>	<b>1,036,908.00</b>
<b>TERRAPIN STATION SOBER LIVING</b>	
Recovery Home (6 months)	23,496.00
<b>UP CENTER OF CHAMPAIGN COUNTY (UNITING PRIDE)</b>	
Children, Youth, and Families Program	59,184.00
<b>URBANA NEIGHBORHOOD CONNECTIONS</b>	
Community Study Center	25,500.00
<b>WELL EXPERIENCE</b>	
Family Services (6 months)	39,996.00
<b>WIN RECOVERY</b>	
WIN Recovery (6 months)	34,740.00
<b>GRAND TOTAL</b>	<b>5,105,755.00</b>

\*\* Programs for people with ID/DD, per Intergovernmental Agreement with the Champaign County Developmental Disabilities Board

## **Service Totals – Brief Narrative of What the Service Categories Represent**

The Champaign County Mental Health Board funds a wide range of services through local human service providers of varying size and sophistication. The CCMHB invests in services that range from helping mothers and families with newborn babies into early childhood to supporting youth through adolescence and young adulthood to assisting adults and families dealing with life's challenges to helping the elderly with activities of daily living. The not for profit and government agencies that provide services with CCMHB funds range from small agencies with only a few employees and volunteers to large multi-million dollar agencies with over a hundred employees. Descriptions of the service activities supported in current and previous years are available at <http://www.co.champaign.il.us/MHBDDDB/PublicDocuments.php> and <http://ccmhddbrds.org>.

Regardless of their size, agencies are required to report on services delivered using four categories. Those categories must be broad enough to provide a certain amount of flexibility to account for how and to whom the programs delivered services. The four categories are Community Service Event (CSE), Service Contact (SC), Non-Treatment Plan Client (NTPC), and Treatment Plan Client (TPC). Each agency is allowed to define within each category what will be reported. Definitions of CSEs and SCs relate to types of activities. Definitions of TPCs and NTPCs relate to who has been served and require a certain level of documentation associated with the service. Some programs may only report under one of the categories, others may report on all four. Which and how many categories an agency reports activity under depends on the services provided by the program.

Community Service Events (CSEs) can be public events, work associated with a news interview or newspaper article, consultations with community groups and caregivers, classroom presentations, and small group workshops and training to promote a program or educate the community. Meetings directly related to planning such events may also be counted here. Examples are the Family Service Self-Help Center planning and hosting of a self-help conference or newsletters published by the East Central Illinois Refugee Mutual Assistance Center.

A Service Contact (SC), also referred to as a screening contact or service encounter, represents the number of times a program has contact with consumers. Sometimes this can be someone who is being served by the program. Or it can be sharing of information, fielding a call about services, or doing an initial screenings or assessment. An example of a service contact would be the volume of calls answered by the Crisis Line at Rosecrance.

A Non-Treatment Plan Client (NTPC) is someone to whom services are provided and there is a record of the service but does not extend to a clinical level where a treatment plan is necessary or where one would be done but does not get completed. An example is a person who comes into the domestic violence shelter at Courage Connection but leaves within a few days before fully engaging in services.

A Treatment Plan Client (TPC) has traditionally meant people engaged in services where an assessment and treatment plan have been completed and case records are maintained. This applies to agencies such as Promise Healthcare, Rosecrance Central Illinois, and others. It can also represent an individual receiving a higher level of care within the spectrum of services provided within a program.

Most contracts are funded as grants while a few are paid on a fee for service basis. Those operating on a fee for service basis have additional detail included in the table. Fee for service detail includes number and type of units of service the program delivered to clients.

**Utilization Summaries for PY2021**  
**Champaign County Mental Health Board Funded Programs**

Detail on each program's performance toward defined consumer outcomes during the funding year of July 1, 2020 to June 30, 2021 is available at <http://ccmhddbrds.org>, among downloadable public files toward the bottom of the page. The relevant document is titled "CCMHB PY21 Performance Outcome Reports."

TPC = Treatment Plan Client

NTPC = Non-Treatment Plan Client

CSE = Community Service Event

SC = Screening Contact or Service Contact

Other, as defined in individual program contract

---

***Priority: Intellectual/Developmental Disabilities - Collaboration with Champaign County Developmental Disabilities Board (CCDDB), focus on Young Children***

---

***Champaign County Regional Planning Commission Head Start/Early Head Start***

**Social Emotional Development Services \$99,615 (+CCDDB contract for \$21,466)**

Seeks to identify and address social-emotional concerns in the early childhood period, as well as to promote mental health among all Head Start children. The social-emotional portion of the program focuses on aiding the development of self-regulation, problem solving skills, emotional literacy, empathy, and appropriate social skills. Accomplishments in these areas will affect a child's ability to play, love, learn and work within the home, school and other environments. All fit together to form the foundation of a mentally healthy person.

**Utilization targets:** 50 TPC, 50 NTPC, 20 CSE, 600 SC, 10 Other (newsletter articles, staff training)

**Utilization actual:** 45 TPC, 90 NTPC, 14 CSE, 729 SC, 39 Other

***Developmental Services Center***

**Family Development Center \$596,522**

Serves children birth to five years old, with or at risk of developmental disabilities, and their families. FDC responds to needs with culturally responsive, innovative, evidence-based services. Early detection and prompt, appropriate intervention can improve developmental outcomes for children with delays and disabilities and children living in at-risk environments. Family-centered intervention maximizes the gifts and capacities of families to provide responsive intervention within familiar routines and environments.

**Utilization targets:** 655 TPC, 200 SC, 4 CSE

**Utilization actual:** 828 TPC, 189 SC, 21 CSE

***Individual Advocacy Group CILA Expansion \$0 (CCDDB contributed \$50,000)***

This annual investment pays for mortgage and property management costs of two of the three local small group homes run by Individual Advocacy Group,

which was selected in 2014 through an RFP process to provide services to people with I/DD living in MHB/DDB owned-homes. During 2019, the CCMHB contributed a larger share in order to pay off the mortgage loan in full; the CCDDDB continues to transfer \$50,000 into the fund each year until their total payments are equal to the CCMHB contribution.

**Utilization:** 4 TPCs with staffing ratios from 1:4 to 2:3 and a choice between IAG 'Flexible Day Experience' and day programs run by other local providers. One house closed in December 2020, the other July 2021, with all 4 individuals moving to CILAs in other counties.

---

***Priority: System of Care for Children, Youth, and Families***

---

*Champaign County RPC Head Start/Early Head Start*

**Early Childhood Mental Health Services \$209,906**

Support from an Early Childhood Mental Health Assistant includes assisting teaching staff and parents in writing individualized social-emotional goals to include in lesson plans for children identified through screening; developing with parents and teaching staff an Individual Success Plan for children who exhibit challenging behaviors; offering teachers social and emotional learning strategies; monitoring children's progress and outcomes; and providing information to families and staff. Facilitation of meetings with a child's parent(s) and teaching staff throughout the process of the child receiving services as well as supporting parents and teaching staff with resources, training, coaching, and modeling.

**Utilization targets:** 50 TPC, 80 NTPC, 1800 SC, 5 CSE, 50 Other

**Utilization actual:** 60 TPC, 45 NTPC, 1815 SC, 66 CSE, 874 Other

*Courage Connection*

**Courage Connection \$127,000**

A family's immediate safety is intimately connected to their long-term success. A community's stability is threatened when any family is in danger. Courage Connection helps victims and survivors of domestic violence rebuild their lives through advocacy, housing, counseling, court advocacy, self-empowerment, community engagement, and community collaborations.

**Utilization targets:** 425 TPC, 110 NTPC, 600 SC, 150 CSE

**Utilization actual:** 750 TPC, 337 NTPC, 887 SC, 166 CSE

*Crisis Nursery*

**Beyond Blue – Champaign County \$75,000**

Beyond Blue serves mothers who have or are at risk of developing perinatal depression (PD), targeting mothers who demonstrated risk factors for PD and are pregnant or have a child under age one. Individual and group support and education to facilitate healthy parent-child engagement. Research suggests that 10-20% of mothers suffer from PD, nearly half are undiagnosed. Addresses risk

factors that lead to emotional disturbances and multiagency and system involvement in children. Works to increase awareness of PD and reduce stigma.  
**Utilization targets:** 33 TPC, 77 NTPC, 522 SC, 128 CSE, 2275 Other (hours of in-kind/respite care)

**Utilization actual:** 27 TPC, 71 NTPC, 300 SC, 104 CSE, 374.75 Other

*Cunningham Children's Home*

**Families Stronger Together \$403,107**

The Families Stronger Together is a new program that provides trauma informed, culturally responsive, therapeutic services to build resiliency in families with youth age ten to seventeen who are or at risk of involvement in the juvenile justice system. Level of engagement with the family is based on assessed need and can last anywhere from one month to ten months. The therapeutic services apply the Attachment, Regulation, and Competency (ARC) treatment framework. Services may include individual therapy, family therapy, psychoeducation services, care coordination, intensive family engagement, and aftercare.

**Utilization targets:** 50 TPC, 25 NTPC, 1125 SC, 10 CSE

**Utilization actual:** 23 TPC, 20 NTPC, 931SC, 20 CSE

*DREAAM House*

**DREAAM \$80,000**

DREAAM is a prevention and early intervention program for boys aimed at cultivating academic excellence and social emotional health. Designed to increase positive outcomes (academic achievement, self-efficacy, social mobility) and decrease negative outcomes (suspensions, low educational performance, violence). Evidence-informed components: 1) day-long summer program, 2) 5-day week, after-school program, 3) school-based mentoring, 4) Saturday athletic activities, and 5) family engagement and training. Embedded in each component is social emotional learning and behavioral health instruction to foster transfer of skills from DREAAM House to school to home.

**Utilization actual:** 65 TPC, 50 NTPC, 175 SC, 10 CSE

**Utilization actual:** 165 TPC, 76 NTPC, 408 SC, 14 CSE

*Don Moyer Boys & Girls Club*

**CU Change \$100,000**

The program seeks to impact under-resourced youth with potential for high school graduation by providing group and individual support, counseling, life skills training, and exposure to positive cultural and healthy life choices. Emphasizes academic support, community engagement, interactive, hands on learning experiences and exposure to positive life alternatives. Assists youth with navigating obstacles to success in the school environment, increasing positive peer and community involvement and developing a positive future plan.

**Utilization targets:** 50 TPC, 79 NTPC, 850 SC, 150 CSE

**Utilization actual:** 55 TPC, 78 NTPC, 263 SC, 117 CSE

*Don Moyer Boys & Girls Club*

**CUNC \$110,195**

An initiative designed to increase community understanding of trauma and expand community capacity to implement trauma-informed practices and procedures. Goals are: addressing the needs of those impacted by trauma and violence and creating more supportive and healed communities. Accomplished through training community members, focusing on youth leaders and elder helpers, and educating the community about trauma and trauma-informed care to support the creation of community-based trauma response teams.

**Utilization targets:** 75 NTPC, 250 SC, 250 CSE

**Utilization actual:** 4 TPC, 116 NTPC, 227 SC, 183 CSE

*Don Moyer Boys & Girls Club*

**Community Coalition Summer Initiatives \$107,000**

Services and supports by specialized providers, through subcontract to Don Moyer Boys and Girls Club, to engage Champaign County's youth in a range of positive summer programming: strengthening academics; developing employment skills and opportunities; athletics; music and arts instruction; etc. Supports and reinforces System of Care principles and values particularly relative to system-involved youth impacted with emotional and environmental challenges. Reports to and through the Champaign County Community Coalition and the CCMHB.

**Utilization targets:** 582 NTPC, 12320 SC, 40 CSE, 700 Other

**Utilization actual:** 692 NTPC, 13840 SC, 40 SCE, 840 Other

*Don Moyer Boys & Girls Club*

**Youth and Family Services \$160,000**

Family-driven, youth-guided services for and with families and children experiencing mental health and/or emotional challenges. Supports are offered at home, in school, and in the community for optimal recovery. Partnering with caregivers to provide the best-fit, most comprehensive services and supports possible. Peer-driven support from those with lived experiences and challenges, educational opportunities to make informed decisions, and technical support to help navigate complicated systems for the best possible outcomes for each individual and their family.

**Utilization targets:** 35 TPC, 20 NTPC, 400 SC, 10 CSE

**Utilization actual:** 20 TPC, 6 NTPC, 463 SC, 16 CSE

*Mahomet Area Youth Club*

**Bulldogs Learn & Succeed Together (BLAST) initially \$15,000, amended to \$9,232**

MAYC's BLAST Programming for students K-12 includes enrichment activities, academic help, and cultural and community-based programming. MAYC partnered with Mahomet Seymour Schools District in this endeavor for several reasons: it allows the use of district facilities, providing a safe and structured environment, children participate in activities in their own school community, additional contact with teachers, school staff, social workers, and guidance

counselors, specialized learning spaces (including computer labs, gyms, music and art rooms), access to a variety of caring community volunteers, and most importantly, an inclusive environment that brings students from all economic backgrounds together. Open to all students but targeting low income and/or struggling students, making the program available at no cost.

**Utilization targets:** 12 TPC, 85 NTPC, 1100 SC, 500 CSE

**Utilization actual:** 7 TPC, 13 NTPC, 1251 SC, 496 CSE

#### *Mahomet Area Youth Club*

**MAYC Members Matter!** initially \$18,000, amended to \$23,768

Emphasizes five core values: Character and Stewardship; Health and Life Skills; Education and Leadership; Creative Arts and Expression, and Sports and Recreation. The MAYC Junior High Club operates Monday thru Friday from 3:30pm to 6:00pm on school days that provides a safe place for up to 40 students at no cost, to study, socialize with peers, play sports and games, and establish meaningful relationships with caring adults. Goals for this program are consistent attendance at school, improved grades, and graduating on time. The out-of-school program operates Monday thru Friday from 7:00a.m. To 6:00p.m., offering activities including educational STEM related projects/activities, arts and crafts, recreation and physical fitness including swimming and trips around the community. Goals for this program are increased meaningful adult and peer connections, physical activity, knowledge of health and nutrition, food security, brain stimulating activities and retention of knowledge gained during the school year.

**Utilization targets:** 12 TPC, 150 NTPC, 2200 SC, 200 CSE

**Utilization actual:** 26 TPC, 158 NTPC, 4328 SC, 240 CSE

#### *NAMI Champaign County Illinois*

**NAMI Champaign County** \$10,000

NAMI Champaign County offers free information and support to people living with mental health problems and their families. NAMI Ending the Silence is an engaging presentation that helps audience members learn about the warning signs of mental health conditions and what steps to take if you or a loved one are showing symptoms of a mental illness. Other program offerings: NAMI Family-to-Family; NAMI in Our Own Voice (IOOV); and NAMI Family Support Group.

**Utilization targets:** 45 CSE

**Utilization actual:** 104 CSE

#### *Rape Advocacy, Counseling & Education Services*

**Sexual Violence Prevention Education** \$63,000

Rape Advocacy, Counseling & Education Services (RACES) is the only agency charged with providing comprehensive services to victims of sexual assault in Champaign County. Trauma-informed counseling, 24-hour crisis hotline, and in-person advocacy at hospital Emergency Departments and at meetings with law enforcement or Courthouse. Also offers prevention education to thousands of

local children and adults per year and conducts community events to further the aim to create a world free of sexual violence.

**Utilization targets:** 1500 (# attending) SC, 200 CSE, 5 Other (presentations at the JDC)

**Utilization actual:** 2653 (# attending) SC, 36 CSE, 0 Other

*Rosecrance Central Illinois*

**Prevention Services \$60,000**

An evidence-based life skills and drug education curriculum for Champaign County students. Programs available for preschool through high school. Sessions on health risks associated with the use of alcohol, tobacco and other drugs. Life skills sessions may include instruction on and discussion of refusal skills, self-esteem, communicating with parents, and related social issues. Prevention team are active members of several anti-drug and anti-violence community-wide coalitions working to reduce youth substance abuse.

**Utilization targets:** 975 CSE

**Utilization actual:** 1344 CSE

*UP Center (Uniting Pride) of Champaign County*

**Children, Youth & Families Program \$31,768**

Program serves LGBTQ adolescents aged 11-18; LGBTQ families; and children dealing with issues related to the stigmatization of their gender and sexual identifications and identities. Services include provision of social-emotional supports, non-clinical crisis intervention, case management referrals, risk reduction strategies, strengths development, community-building events, and management of adult volunteers within this program. Program provides a weekly adolescent non-clinical support group.

**Utilization targets:** 3 TPC, 65 NTPC, 80 SC, 50 CSE

**Utilization actual:** 0 TPC, 68 NTPC, 319 SC, 72 CSE

*Urbana Neighborhood Connections*

**Community Study Center \$25,500**

Empowerment zone which youth benefit from productive year-round academic, recreational, and social-emotional supplements. Point of contact for information, linkage and referral to community resources. Study Center provides opportunity to engage school aged youth in non-traditional, practical intervention and prevention approaches for addressing difficulties. In individual and group activities facilitated/supervised by program staff and volunteers, participants can process feelings in a secure and supportive environment.

**Utilization targets:** 125 NTPC

**Utilization actual:** 131 NTPC



---

**Priority: Behavioral Health Supports which Reduce Incarceration**

---

*Champaign County Children's Advocacy Center (CAC)*

**Children's Advocacy \$52,754**

Promoting healing and justice for children/youth who have been sexually abused. The CAC provides: a family-friendly initial investigative interview site; supportive services for the child and non-offending family, promoting healing; and abuse investigation coordination. Most of the young people served are victims of sexual abuse. CAC services are also provided to those children/youth who are victims of severe physical abuse and to victims of child trafficking. Trauma inflicted by these crimes is deep; with the right help the young person can begin to heal.

**Utilization targets:** 220 TPC, 25 NTPC, 245 SC, 9 CSE

**Utilization actual:** 264 TPC, 68 NTPC, 222 SC, 9 CSE

*Champaign County Health Care Consumers*

**Justice Involved CHW Services & Benefits \$75,140**

Community Health Worker services (as below), for people at the Champaign County jail. Services are offered on-site, to improve access to care upon discharge/release. Provider also coordinates with related programs and coalitions, toward improved response for those in crisis or incarcerated.

**Utilization targets:** 110 TPC, 28 NTPC, 180 SC, 8 CSE, 12 Other (Rx fund)

**Utilization actual:** 80 TPC, 20 NTPC, 783 SC, 16 CSE, 13 Other (Rx fund)

*Champaign County Regional Planning Commission – Community Services*

**Justice Diversion Program \$75,308**

The Justice Diversion Program is the primary connection point for case management and services for persons who have Rantoul Police Department Crisis Intervention Team (CIT) and/or domestic contacts, offering case management with a goal to reduce criminal recidivism and help clients develop and implement plans to become successful and productive members of the community, offering law enforcement an alternative to formal processing. The JDP develops additional community resources and access to services in Rantoul.

**Utilization targets:** 42 TPC, 70 NTPC, 200 SC, 12 CSE

**Utilization actual:** 14 TPC, 72 NTPC, 137 SC, 12 CSE

*Champaign County Regional Planning Commission – Community Services*

**Youth Assessment Center (YAC) \$76,350**

The YAC screens youth for risk factors and links youth/families to support and restorative community services. The YAC provides an alternative to prosecution for youth involved in delinquent activity. Case managers, using Trauma Informed Care and BARJ principles, screen juvenile offenders referred to our program to identify issues that might have influenced the offense and link youth to services

to address the identified issues. Focused on helping youth be resilient, resourceful, responsible and contributing members of society.

**Utilization targets:** 55 TPC, 13 NTPC, 40 SC, 50 CSE, 50 Other (1<sup>st</sup> time refer)

**Utilization actual:** 16 TPC, 16 NTPC, 29 SC, 39 CSE, 10 Other (1<sup>st</sup> time referral)

*Family Service of Champaign County*

**Counseling \$30,000**

Affordable, accessible counseling services to families, couples and people of all ages. Clients are given tools and supports to successfully deal with life challenges such as divorce, marital and parent/child conflict, depression, anxiety, abuse, substance abuse/dependency and trauma. Strength-based, client driven services utilize family and other natural support systems and are respectful of the client's values, beliefs, traditions, customs and personal preferences.

**Utilization targets:** 40 TPC, 35 NTPC

**Utilization actual:** 36 TPC, 13 NTPC

*FirstFollowers*

**FirstSteps Reentry House (NEW) \$39,500**

FirstSteps Community House is new program that operates a transition house for adult men returning home to Champaign County after incarceration. The program provides rent free housing in a five bedroom house donated for use by the Housing Authority of Champaign County. Up to four men can be housed at a time. First Followers staff will assist the residents in transition, help them set up plans of action and goals, provide transportation to potential employment or service opportunities, and facilitate their integration into the community.

Projected length of engagement is between three months to a year.

**Utilization targets:** 11 TPC, 40 NTPC, 8 SC, 6 CSE

**Utilization actual:** 5 TPC, 30 NTPC, 11 SC, 5 CSE

*First Followers*

**Peer Mentoring for Re-entry \$95,000**

Mission is to build strong and peaceful communities by providing support and guidance to the formerly incarcerated, their loved ones, and the community. Offers assistance in job searches, accessing housing and identification as well as emotional support to assist people during the transition from incarceration to the community. In addition, we carry out advocacy work aimed at reducing the stigma associated with felony convictions and attempt to open doors of opportunity for those with a criminal background.

**Utilization targets:** 55 TPC, 260 NTPC, 55 SC, 15 CSE

**Utilization actual:** 31 TPC, 89 NTPC, 31 SC, 18 CSE

*Rosecrance Central Illinois*

**Criminal Justice PSC \$304,350**

Individuals at the Champaign County Jail receive screening and, as appropriate, mental health assessment, substance abuse assessment, counseling, case

management, individual and/or intensive outpatient substance abuse treatment, and linkage to additional supports as needed in the community.

**Utilization targets:** 145 TPC, 235 NTPC, 760 SC

**Utilization actual:** 67 TPC, 77 NTPC, 201 SC, 61 Other (group sessions)

*Rosecrance Central Illinois*

**Fresh Start \$79,310**

Aimed at addressing the root cause of the violence, customized for our community in coordination with the Champaign Community Coalition's Fresh Start Initiative, involving a 3-pillar approach – Community, Law Enforcement, and a Case Manager. Identifies and focuses on individuals with history of violent, gun-related behaviors. Participants are offered an alternative to violence, with intensive case management, assistance accessing services (such as medical, dental, behavioral health) to address immediate personal or family issues and to overcome barriers to employment, housing, education.

**Utilization targets:** 15 TPC, 10 NTPC, 10 SC, 80 CSE, 30 Other

**Utilization actual:** 19 TPC, 11 NTPC, 8 SC, 161 CSE, 43 Other

*Rosecrance Central Illinois*

**Specialty Courts \$203,000**

People sentenced to Champaign County Drug Court receive substance use disorder assessment, individualized treatment planning, individual counseling sessions, and a wide array of education and therapeutic groups. Case manager provides intensive case management to connect the clients to overcome barriers to treatment, such as access to food, clothing, medical and dental services, mental health treatment, employment, housing, education, transportation, and childcare.

**Utilization targets:** 60 TPC, 1500 SC, 4 CSE, 6000 Other = 600 hours case management, 5400 hours counseling. "Other" represents services funded by other sources leveraged through CCMHB support for non-billable activities crucial to the operation of the Specialty Court.

**Utilization actual:** 53 TPC, 1037 SC, 4 CSE, Other 15 hours assessment, 313 hours case management, 1875 hours counseling.

---

***Priority: Innovative Practices and Access to Behavioral Health Services***

---

*Champaign County Christian Health Center*

**Mental Health Care at CCCHC \$13,000**

CCCHC patients may receive mental health screenings, primary care, prescriptions, and referrals to specialized care as needed. Any uninsured and underinsured resident of Champaign County, typically between the ages of 18 and 64, is eligible. Primary care providers treat or refer those with MH conditions, especially anxiety and depression. With this grant CCCHC will recruit new psychiatrists, psychologists, and counselors to provide direct MH care, greatly

enhancing community resources. Recruiting strategies: contacting hospitals and health care facilities to promote CCCHC; targeting organizations that have potential MH volunteers; and connecting with a psychiatrist who runs a residency program to bring services to CCCHC patients.

**Utilization targets:** 210 TPC, 60 NTPC, 6 CSE

**Utilization actual:** 48 TPC, 0 NTPC, 0 CSE

*Champaign County Health Care Consumers*

**CHW Outreach & Benefit Enrollment \$77,960**

Enrollment in health insurance and other public benefit programs; help with maintenance of benefits; case management; education and outreach. Enrollment in Medicaid, Medicaid Managed Care, private plans through ACA Marketplace, Medicare for those eligible by virtue of age or disability, Medicare Extra Help, Medicare Savings Program to reduce the out of pocket costs, hospital/clinic financial assistance programs. Help applying for Promise Healthcare's sliding scale and completing the new patient packet. In-house Rx Fund for low-income individuals, enrollment in pharmaceutical assistance programs, SNAP and SafeLink phone program. Access to affordable dental and vision care. Case-management, referrals and advocacy to access other benefits and social services.

**Utilization targets:** 160 TPC, 55 NTPC, 600 SC, 20 CSE, 30 Other (Rx fund)

**Utilization actual:** 119 TPC, 42 NTPC, 790 SC, 25 CSE, 40 Other (Rx fund)

*Champaign County Regional Planning Commission – Community Services*

**Homeless Services System Coordination \$51,906**

Homeless Services System Coordination program supports a position to: support, facilitate, and direct the IL-503 Continuum of Care (CoC); to support the body's mission to end homelessness in Champaign County through a coordinated network of resources for those who are homeless or at-risk of becoming homeless; coordinate efforts across the CoC membership to support its goals and the Homeless Emergency and Rapid Transition to Housing (HEARTH) Act regulations; and build and maintain collaborative partnerships with CoC membership and affiliates, working closely with the CoC Executive Committee.

**Utilization targets:** 6 TPC, 40 SC, 26 CSE

**Utilization actual:** 10 TPC, 104 SC, 52 CSE

*Community Service Center of Northern Champaign County*

**Resource Connection \$67,596**

A multi-service program aimed at assisting residents of northern Champaign County with basic needs and connecting them with mental health and other social services. Serves as a satellite site for various human service agencies providing mental health, physical health, energy assistance, and related social services. Features an emergency food pantry, prescription assistance, clothing and shelter coordination, and similar services for over 1,700 households in northern Champaign County.

**Utilization targets:** 1400 NTPC, 4500 SC, 2700 Other (contacts with other agencies using CSCNCC as a satellite site)

**Utilization actual:** 669 NTPC, 2970 SC, 838 Other

*Cunningham Children's Home*

**ECHO Housing and Employment Support \$101,604**

Works closely with individuals who are homeless or at risk of homelessness, through intensive case management and care coordination geared towards promoting permanent housing and employment and resolving barriers. The Case Manager takes a holistic approach to supportive services by countering possible barriers to goal stability (e.g., basic needs, child care, physical health, and mental health). Participants receive weekly services that last until 90 days after obtaining both housing and employment.

**Utilization targets:** 20 TPC, 24 NTPC, 568 SC, 25 CSE

**Utilization actual:** 22 TPC, 4 NTPC, 924 SC, 34 CSE

*East Central IL Refugee Mutual Assistance Center*

**Family Support and Strengthening \$56,440**

Supports and strengthens refugee and immigrant families transitioning and adjusting to American culture and expectations. Provides orientation, information/referral, counseling, translation/interpretation services, culturally appropriate educational workshops, and help accessing entitlement programs. Bi-monthly newsletter and assistance to refugee/immigrant mutual support groups. Staff speaks nine languages and accesses community volunteers to communicate with clients in languages not on staff.

**Utilization targets:** 50 CSE, 15 Other (hours of workshops)

**Utilization actual:** 83 CSE, 15 Other

*Family Service of Champaign County*

**Self-Help Center \$28,930**

Information about and referral to local support groups. Provides assistance to develop new support groups and maintaining and strengthening existing groups. Program maintains a database of Champaign County support groups, national groups, and groups in formation. Information is available online and in printed directory and specialized support group listings. Provides consultation services, workshops, conferences, educational packets and maintains a lending library of resource materials.

**Utilization target:** 300 CSE

**Utilization actual:** 289 CSE

*Family Service of Champaign County*

**Senior Counseling & Advocacy \$162,350**

For Champaign County seniors and their families. Services are provided in the home or in the community. Caseworkers assist with needs and challenges faced by seniors, including grief, anxiety, depression, isolation, other mental health issues, family concerns, neglect, abuse, exploitation and need for services or benefits acquisition. Assists seniors providing care for adult children with

disabilities and adults with disabilities age 18-59 experiencing abuse, neglect or financial exploitation.

**Utilization targets:** 350 TPC, 500 NTPC, 3500 SC

**Utilization actual:** 471 TPC, 524 NTPC, 1910 SC

#### *GROW in Illinois*

##### **Peer Support \$77,239**

Mutual-help; peer to peer 12-step program provides weekly support groups for mental health sufferers of all races and genders. GROW compliments the work of professional providers by connecting people with others in similar situations and empowering participants to do that part which they can and must be doing for themselves and with one another. While professional providers offer diagnosis and treatment, consumer-providers offer essential rehabilitation and prevention services because of firsthand experience with the recovery process. Groups offered include in-person as well as virtual sessions for men and for women, and are held in various locations around the county including Champaign County Jail.

**Utilization targets:** 115 NTPC, 1200 SC, 4 CSE

**Utilization actual:** 57 NTPC, 871 SC, 10 CSE

#### *Promise Healthcare*

##### **Mental Health Services with Promise \$350,117**

On-site mental health services to achieve the integration of medical and behavioral health care as supported by both the National Council for Community Behavioral Healthcare and the National Association of Community Health Centers. Mental health and medical providers collaborate, make referrals, and even walk a patient down the hall to meet with a therapist. Patients receive mental illness treatment through counselor, psychiatrist or primary care provider. Counseling and psychiatry are available to patients at Frances Nelson, the satellite site at Rosecrance Walnut Street, and Urbana School Health Center.

**Utilization targets:** Counseling Services: 500 TPC, 2750 SC. Psychiatric Services: 1600 TPC in psychiatric practice, 850 NTPC getting psych meds through primary care, 7500 SC psychiatric service encounters, 4 CSE lunch and learn sessions, 50 Other as denials (reported by business office).

**Utilization actual:** Counseling Services: 420 TPC, 1358 SC. Psychiatric Services: 1407 in psychiatric practice, 471 getting psych meds through primary care, 3962 psychiatric service encounters, 0 lunch and learn sessions, other.

#### *Promise Healthcare*

##### **Promise Healthcare Wellness \$107,987**

Support, case management, and benefit enrollment for patients with non-clinical barriers to achieving optimum medical and mental health. Targets hundreds of patients who have a mental health diagnosis and a chronic medical condition and those at risk of or who have had a justice system encounter. Coordinators work with patients to remove barriers to optimum medical and mental health.

Facilitates care at satellite location, and supports collaborations with other agencies, and community outreach.

**Utilization actual:** 175 TPC, 460 NTPC, 1500 SC, 27 CSE, 2200 Other  
(enrolled in healthcare coverage)

**Utilization actual:** 288 TPC, 225 NTPC, 690 SC, 15 CSE, 1201 Other

*Rattle the Stars*

**Youth Suicide Prevention Education \$86,500**

Designed to build skills and improve competence to encourage intervention between peers, and by parents and adults. Covering three core areas for intervention: what to look for to recognize mental illness, mental health crises, and suicidal thoughts; how to intervene by using appropriate and effective communication skills; and accessing necessary resources for professional care. Program is developed from evidence informed models and adheres to best practices suggested by nationally recognized mental health and suicide prevention agencies.

**Utilization targets:** 200 CSE

**Utilization actual:** 139 CSE

*Rosecrance Central Illinois*

**Crisis, Access, & Benefits \$203,960**

A 24-hour program including Crisis Team and Crisis Line. Clinicians provide immediate intervention by responding to crisis line calls and conducting crisis assessments throughout Champaign County. The Crisis Team works closely with hospitals, local police, the University, and other local social service programs. Offers access services including information, triage, screening, assessment, and referral for consumers and members of the community.

**Utilization targets:** 1400 NTPC (intake screenings, mental health assessments), 2300 SC (crisis calls), 15 CSE, Other = 200 (benefits applications).

**Utilization actual:** 853 NTPC (intake screening or mental health assessments), 3317 SC (crisis calls), 0 CSE, Other = 106 benefits applications. Program also reports 853 Crisis team contacts (not a subset of crisis calls) and 853 mental health assessments by Crisis team.

*Rosecrance Central Illinois*

**Recovery Home \$200,000**

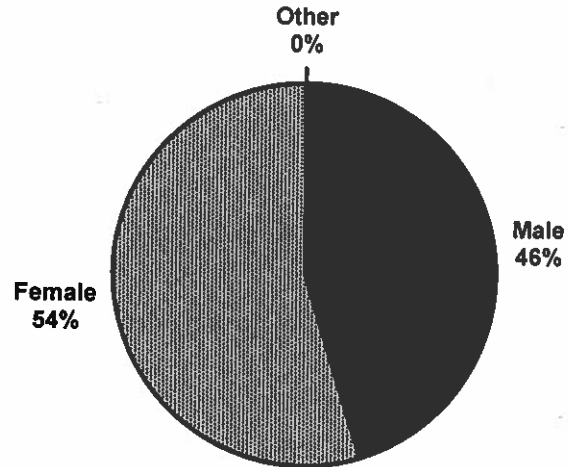
Therapeutic interventions that facilitate removal of barriers for safe/supportive housing; 12-Step support involvement; independent living skills; education/vocational skills; identification and use of natural supports; use of community resources; and peer support. Evidence based practices to be used include: 12-Step model and peer support; Level system; Case Management; and Contingency management initiatives.

**Utilization targets:** 31 TPC, 95 SC

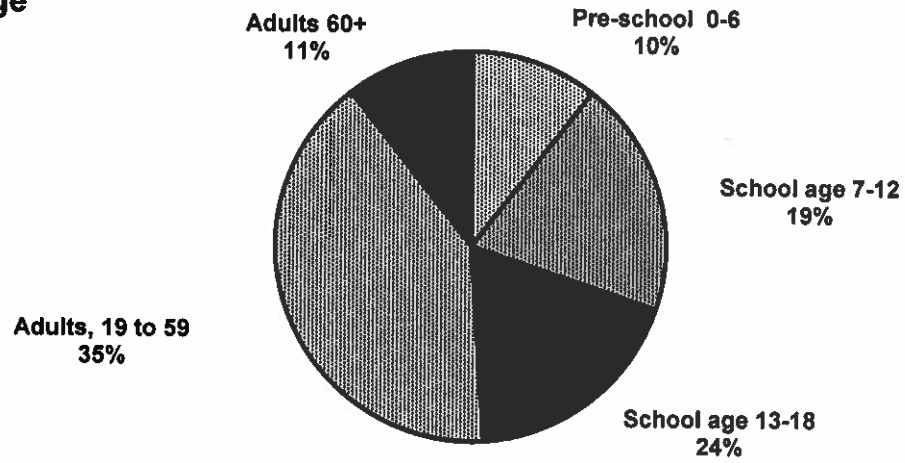
**Utilization actual:** 20 TPC, 52 SC

# Demographic and Residency Data for Persons Served in Program Year 2021

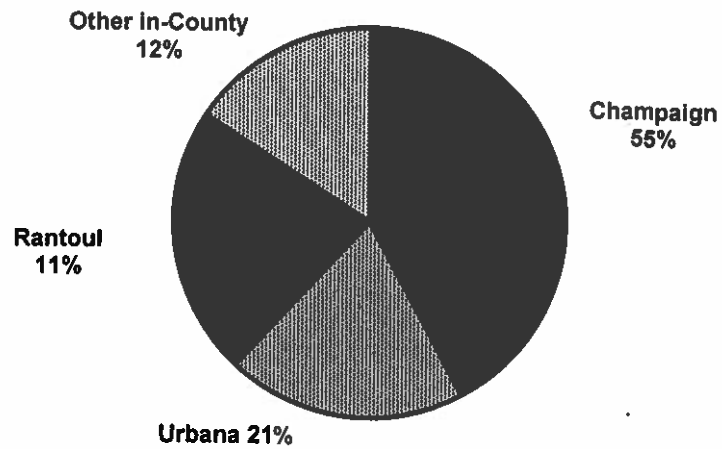
## Gender



## Age



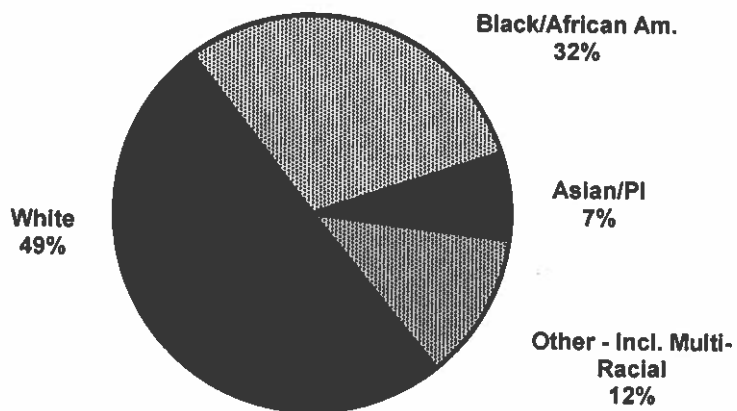
## Residency



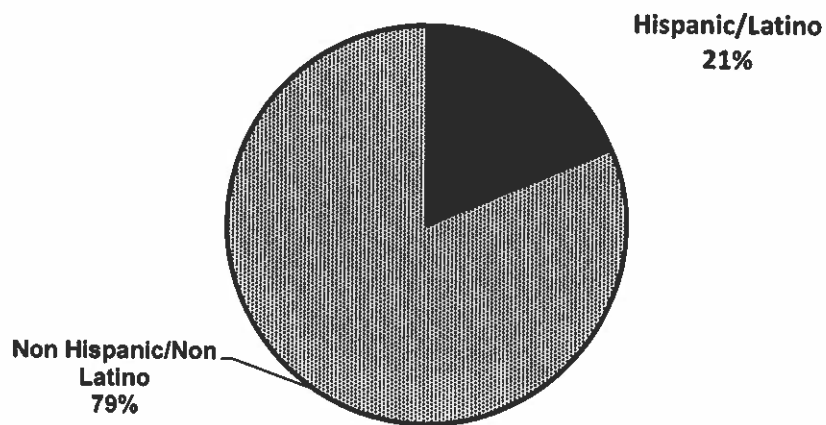


# Demographic and Residency Data for Persons Served in Program Year 2021

## Race

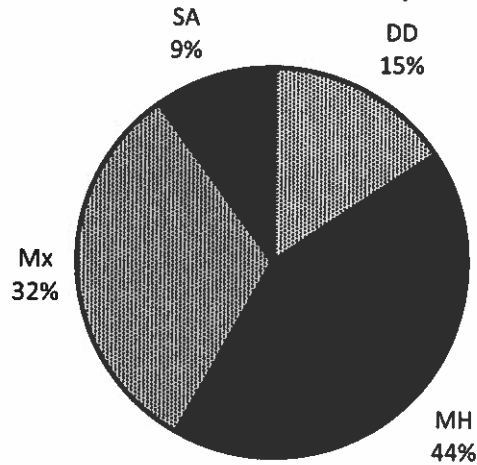


## Ethnic Origin

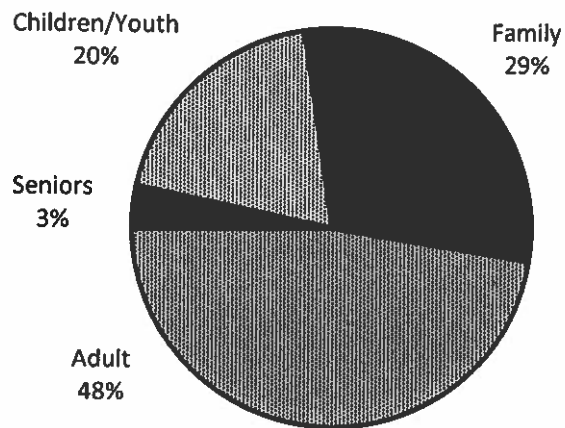


# Funding by Sector, Population, and Service in Program Year 2021 (PY21)

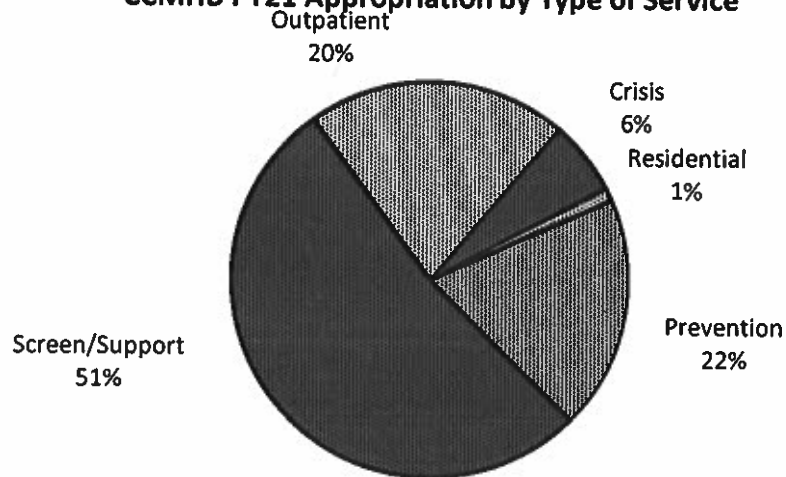
## CCMHB PY21 Appropriation by Community Mental Health Sector



## CCMHB PY21 Appropriation by Target Population



## CCMHB PY21 Appropriation by Type of Service



**SECTION II: Three-Year Plan 2022-2024  
with FY 2022 One-Year Objectives**

**CHAMPAIGN COUNTY MENTAL HEALTH BOARD**

# **THREE-YEAR PLAN**

**FOR**

**FISCAL YEARS 2022-2024**

**(1/1/2022 – 12/31/2024)**

**WITH**

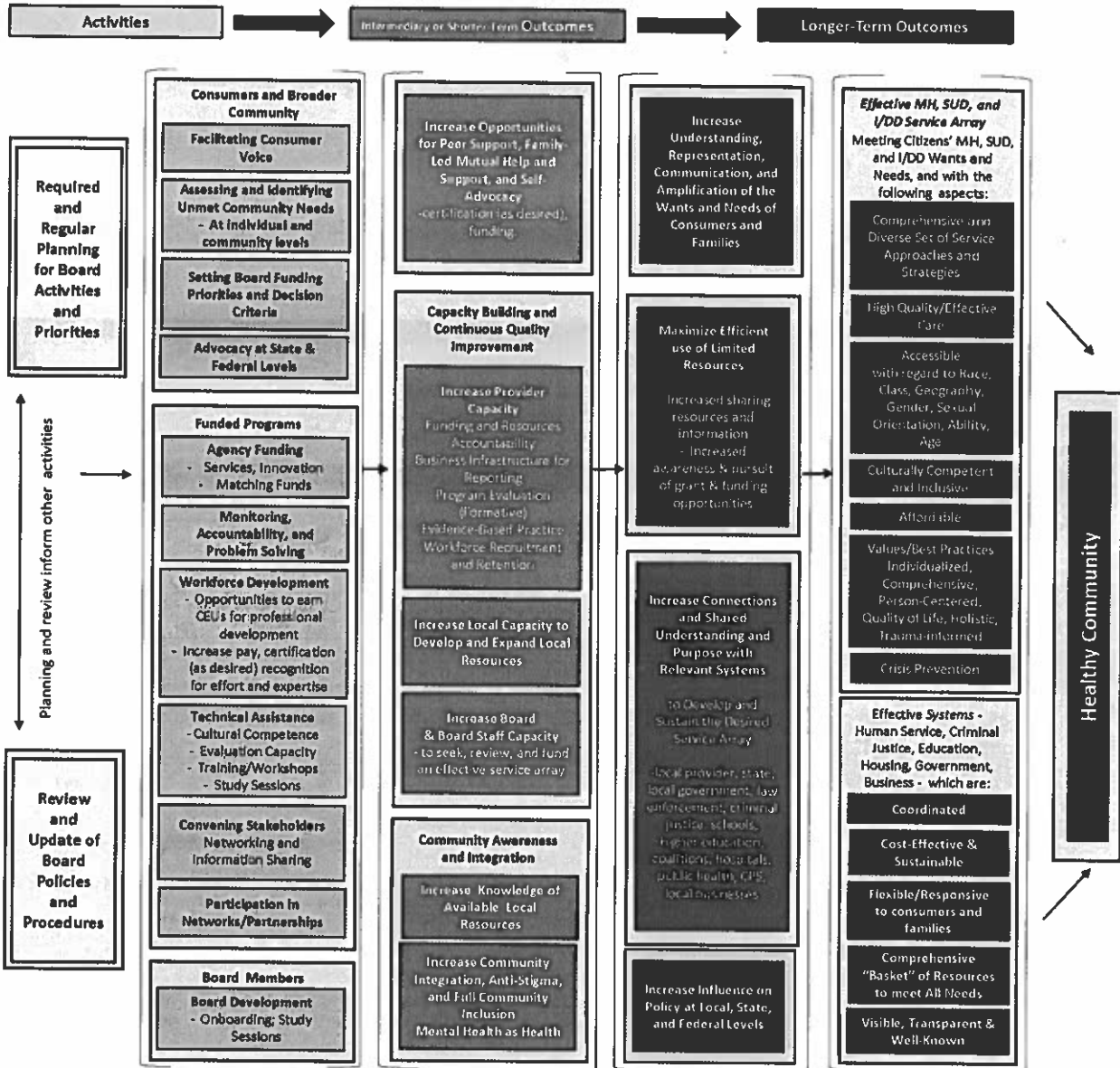
**ONE YEAR OBJECTIVES**

**FOR**

**FISCAL YEAR 2022**

**(1/1/2022 – 12/31/2022)**

**Purpose:**  
*To promote health and wellbeing in the community through the promotion of a local system of services for the prevention and treatment of mental or emotional, intellectual or developmental, and substance use disorders, in accordance with the assessed priorities of the citizens of Champaign County.*



**Champaign County Mental Health Board  
 Three Year Plan for 2022-2024 with One Year Objectives**

*Logic Model Developed by Board and Staff with the UIUC Evaluation Capacity Building Project Team during Spring 2021*

## **CHAMPAIGN COUNTY MENTAL HEALTH BOARD**

**WHEREAS**, the Champaign County Mental Health Board has been established under Illinois Revised Statutes (405 ILCS – 20/Section 0.1 et. seq.) in order to "construct, repair, operate, maintain and regulate community mental health facilities to provide mental health services as defined by the local community mental health board, including services for, persons with a developmental disability or substance use disorder, for residents thereof and/or to contract therefor..."

**WHEREAS**, the Champaign County Mental Health Board is required by the Community Mental Health Act to prepare a one- and three-year plan for a program of community mental health services and facilities;

**THEREFORE**, the Champaign County Mental Health Board does hereby adopt the following Mission Statement and Statement of Purposes to guide the development of the mental health plan for Champaign County:

### **MISSION STATEMENT**

*The mission of the CCMHB is the promotion of a local system of services for the prevention and treatment of mental or emotional, intellectual or developmental, and substance use disorders, in accordance with the assessed priorities of the citizens of Champaign County.*

### **STATEMENT OF PURPOSES**

1. To plan, coordinate, evaluate, and allocate funds for the comprehensive local system of mental health, intellectual and developmental disabilities, and substance use disorder services for Champaign County.
2. To promote family-friendly community support networks for the at-risk, underserved, and general populations of Champaign County.
3. To increase public and private support for the local system of services.
4. To further develop systematic exchange of information about local services and needs between the public/private service systems and the CCMHB.

To accomplish these purposes, the Champaign County Mental Health Board must collaborate with the public and private sectors in providing the resources necessary for the effective functioning of the community mental health system.

# COORDINATED SYSTEMS OF CARE

Comprehensive and  
Diverse Set of Service  
Approaches and  
Strategies

High Quality/Effective  
Care

## Goal #1:

Support a continuum of services to improve the quality of life experienced by individuals with mental or emotional disorders, substance use disorders, or intellectual and/or developmental disabilities and their families residing in Champaign County.

**Objective 1.1:** Expand use of evidence-informed, evidence-based, best practice, recommended, and promising practice models appropriate to the presenting need to improve outcomes for individuals across the lifespan and for their families and supporters. (Allocation Priority/Criteria Objective)

**Objective 1.2:** Promote wellness for people with mental illnesses, substance use disorders, or intellectual and/or developmental disabilities to prevent and reduce early mortality, through support services including access to services addressing basic needs, enrollment in benefit plans and coordinated access to primary care. (Allocation Priority/Criteria Objective)

**Objective 1.3:** Support development or expansion of residential and employment supports for persons with behavioral health diagnoses and no other payor source. (Allocation Priority/Criteria Objective)

**Objective 1.4:** Support broad based community efforts to prevent overdose deaths and expand treatment options for substance use disorders and addictions. (Allocation Priority/Criteria Objective)

**Objective 1.5:** Build resiliency and support recovery e.g. peer supports, outside of a clinical setting. Peer-run/operated, mutual help groups support professional medical therapy for recovery, maintenance of recovery, and familial support. (Allocation Priority/Criteria Objective)

**Objective 1.6:** Build evaluation capacity of contracted providers utilizing expertise of evaluators from the Department of Psychology at the University of Illinois to improve positive outcomes of those engaging in funded services. (Policy Objective)

**Objective 1.7:** Increase providers' ability to set internal goals for advancing program performance outcome evaluation. (Policy Objective)

**Objective 1.8:** Support targeted efforts for workforce recruitment and retention initiatives, with level of assistance linked to length of service commitment. (Allocation Priority/Criteria Objective)

**Objective 1.9:** Enable providers to implement flexible responses to operations during the COVID-19 pandemic, such as supporting telehealth or other virtual service options, to maintain access and engagement with clients and community. (Collaboration/Coordination Objective)

Accessible  
with regard to Race,  
Class, Geography,  
Gender, Sexual  
Orientation, Ability,  
Age

Culturally Competent  
and Inclusive

**Goal #2:**

Sustain commitment to addressing health disparities experienced by historically underinvested populations.

**Objective 2.1:** Support culturally and linguistically responsive and family driven support networks for underrepresented populations, underserved populations, and general populations of Champaign County. (Allocation Priority/Criteria Objective)

**Objective 2.2:** Provide technical assistance in support of continuous improvement of cultural and linguistic competence plans to meet the needs of the population served. (Collaboration/Coordination Objective)

**Objective 2.3:** Encourage providers and other community-based organizations to allocate resources to provide training, seek technical assistance, provide language access and communication assistance, and pursue other professional development activities for staff and governing or advisory boards to advance cultural and linguistic competence. (Allocation Priority/Criteria Objective)

**Objective 2.4:** Where families and communities are disproportionately impacted by incarceration, encourage the development of social networks and improved access to resources. (Policy Objective)



**Objective 2.5:** Assess and address the needs of residents of rural areas and farm communities. (Policy Objective)

**Objective 2.6:** Review data on the impact of COVID-19 on Champaign County residents with particular attention to underinvested populations and promote provider response to mitigate the adverse impact, as resources allow. (Collaboration/Coordination Objective)

Maximize Efficient use of  
Limited Resources

Convening Stakeholders  
Networking and Information  
Sharing

Participation in  
Networks/Partnerships

**Goal #3:**

On behalf of all eligible Champaign County residents, improve access to the supports, services, and resources currently available and beneficial to some.

**Objective 3.1:** Participate in various coordinating councils whose missions align with the needs of the populations of interest to the Board with the intent of strengthening coordination between providers in the delivery of services. (Collaboration/Coordination Objective)

**Objective 3.2:** Explore at the Board level potential for collaboration on issues of mutual interest with the C-U Public Health District and the Champaign County Board of Health. (Collaboration/Coordination Objective)

**Objective 3.3:** Engage with CUPHD, United Way, Carle Foundation Hospital, and OSF in the collaborative planning process for the next Community Health Improvement Plan. (Collaboration/Coordination Objective)

**Objective 3.4:** Increase awareness of community services and access to information on when, where, and how to apply for services, including through system navigators and expanded language access. (Collaboration/Coordination Objective)

**Objective 3.5:** Explore feasibility of co-locating services in neighborhood community centers to reach underinvested populations, including in rural areas. (Collaboration/Coordination Objective)

**Board Development**  
Onboarding; Study Sessions

**Increase Board  
& Board Staff Capacity**  
- to seek, review, and fund  
an effective service array

**Goal #4:**

Continue the collaborative working relationship with the Champaign County Board for Care and Treatment of Persons with a Developmental Disability (CCDDDB).

**Objective 4.1:** Coordinate integration, alignment, and allocation of resources with the CCDDDB to ensure the efficacious use of resources within the intellectual/developmental disability (I/DD) service and support continuum. (Allocation Priority/Criteria Objective)

**Objective 4.2:** Assess alternative service strategies that empower people with I/DD and increase access to integrated settings as exemplified by the collaborative approach to the Employment First Act. (Policy Objective)

**Objective 4.3:** With the CCDDDB, continue financial commitment to community-based housing for people with I/DD from Champaign County. (Allocation Priority/Criteria Objective)

**Objective 4.4:** Collaborate with the CCDDDB on promoting inclusion and respect for people with I/DD. (Collaboration/Coordination Objective)

**Objective 4.5:** Collaborate with the CCDDDB for use of the funds from the sale of the CILA homes to meet the needs of Champaign County residents with I/DD with significant support needs. (Policy/Allocation Priority/Criteria Objective)

## **CHILDREN AND FAMILY FOCUSED PROGRAMS AND SERVICES**

**Increase Understanding, Representation, Communication, and Amplification of the Wants and Needs of Consumers and Families**

**Flexible/Responsive to consumers and families**

**Goal #5:**

Building on progress achieved through the six-year Cooperative Agreement between the Federal Substance Abuse and Mental Health Services Administration (SAMHSA), the Illinois Department of Human Services (IDHS), and the Champaign County Mental Health Board

(CCMHB), sustain the SAMHSA/IDHS system of care model.

**Objective 5.1:** Support the efforts of the Champaign Community Coalition and other system of care initiatives. (Collaboration/Coordination Objective)

**Objective 5.2:** Sustain and build on the successes of Champaign County family-run organizations that incorporate family-driven and youth-guided principles in use of peer support specialists, and other peer-to-peer supports to assist multi-system involved youth and their families (Allocation Priority/Criteria Objective)

**Objective 5.3:** Support development of a coordinated response to community violence, including gun violence, that leverages existing investments by the Board in prevention and early intervention services for children, youth, and families, with funds from other funders to mitigate the public health crisis associated with community violence and in particular gun violence. (Policy Objective)

**Objective 5.4:** Promote and support those targeted interventions that specifically address historical trauma experienced by African American and other minority youth. (Allocation Priority/Criteria Objective)

**Objective 5.5:** Sustain commitment to building systems that are trauma-informed, family-driven, youth-guided, and culturally responsive. (Policy Objective)

**Objective 5.6:** Acknowledging racial trauma as a mental health issue, develop an appropriate response. (Policy Objective)

**Objective 5.7:** Identify or create opportunities to advocate at local, state, and national levels for full implementation and funding of safety net, screening, and crisis response for all children and families, including those with multi-system involvement or encountering multiple barriers to success and health. (Collaboration/Coordination Objective/Policy Objective)

## ***CRIMINAL JUSTICE AND MENTAL HEALTH SYSTEM COLLABORATION***

**Crisis Prevention**

Values/Best Practices  
Individualized,  
Comprehensive,  
Person-Centered,  
Quality of Life, Holistic,  
Trauma-informed

**Goal #6:**

Divert persons with behavioral health needs or intellectual and/or developmental disabilities from the criminal justice system, as appropriate.

**Objective 6.1:** Continue involvement in the Crisis Intervention Team Steering Committee in support of increased collaboration between law enforcement and crisis service providers on implementing mobile crisis response in the community. (Collaboration/Coordination Objective)

**Objective 6.2:** Sustain efforts to engage persons with behavioral health diagnoses re-entering the community from jail or prison or with recent involvement with the criminal justice system, in treatment and other support services such as the Champaign County Problem Solving Court and reentry services. (Allocation Priority/Criteria Objective)

**Objective 6.3:** Support integrated planning and service coordination for adults involved in the criminal justice system through participation in the Champaign County Reentry Council or similar body to address identified needs. (Collaboration/Coordination Objective)

**Objective 6.4:** Through the National Association of County Behavioral Health and Developmental Disability Directors (NACBHDD), in its partnership with the National Association of Counties (NACo), use and promote technical assistance and support through collaborative and mentorship opportunities aimed at improving outcomes for those with behavioral health needs and justice system involvement. (Collaboration/Coordination Objective)

Increase Connections and Shared Understanding and Purpose with Relevant Systems  
to Develop and Sustain the Desired Service Array  
Comprehensive "Basket" of Resources to meet All Needs  
Visible, Transparent & Well-Known

**Goal #7:**

In conjunction with the Champaign County Sheriff's Office, other law enforcement, and community stakeholders, pursue a continuum of services as an alternative to incarceration

and/or overutilization of local emergency departments for persons with behavioral health needs or developmental disabilities.

**Objective 7.1:** Support initiatives providing housing and employment supports for persons with a mental illness, substance use disorder, and/or intellectual and developmental disabilities through local collaborations. (Allocation Priority/Criteria Objective)

**Objective 7.2:** Identify supports and services which reduce unnecessary incarceration and institutionalization, including behavioral health assessments, crisis stabilization, and treatment for addictions. (Collaboration/Coordination Objective)

**Objective 7.3:** Collaborate in the planning and implementation of mobile crisis response and other crisis supports. (Allocation Priority/Criteria Objective, Collaboration/Coordination Objective)

Comprehensive and  
Diverse Set of Service  
Approaches and  
Strategies

High Quality/Effective  
Care

### **Goal #8:**

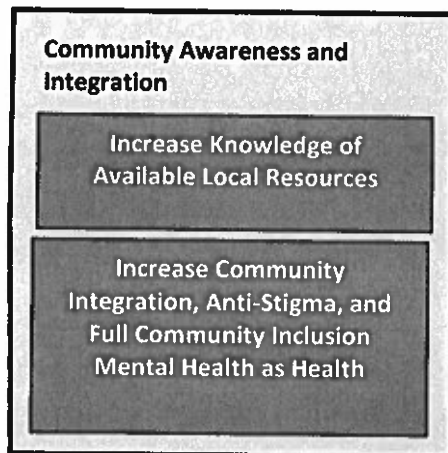
**Support interventions for youth who have juvenile justice system involvement.**

**Objective 8.1:** Through participation on the Youth Assessment Center Advisory Committee, advocate for community and education-based interventions contributing to positive youth development and decision-making. (Collaboration/ Coordination Objective)

**Objective 8.2:** Through participation in the Champaign Community Coalition and other community focused initiatives, encourage multi-system collaborative approaches for improving outcomes for youth and families and communities. (Collaboration/Coordination Objective)

**Objective 8.3:** Utilize the principles from "Models for Change" to reduce the disproportionate minority contact with law-enforcement and involvement with the juvenile justice system. (Policy Objective)

# COMMUNITY ENGAGEMENT & ADVOCACY



**Goal #9:** Address the need for acceptance, inclusion and respect associated with a person's or family members' mental illness, substance use disorder, intellectual and/or developmental disability through broad based community education efforts to increase community acceptance and positive self-image.

**Objective 9.1:** Continue support for and involvement in efforts to promote inclusion and challenge stigma and discrimination, such as the disABILITY Resource Expo: Reaching Out for Answers, Ebertfest, National Children's Mental Health Awareness Day, and other related community education events. (Collaboration/Coordination Objective)

**Objective 9.2:** Promote substance use disorder prevention initiatives as a community education tool targeting youth and young adults. (Collaboration/Coordination Objective)

**Objective 9.3:** Participate in behavioral health community education initiatives, such as National Depression Screening Day, to encourage individuals to be screened and seek further assistance where indicated. (Collaboration/Coordination Objective)

**Objective 9.4:** Encourage and support efforts to more fully integrate people with behavioral health disorders and/or intellectual and/or developmental disabilities into community life in Champaign County. (Allocation Priority/Criteria Objective)

**Objective 9.5:** Support Mental Health First Aid for Adults, Youth, and Teens, to encourage community members to provide first responder support for people that may be experiencing signs and symptoms of a crisis. (Collaboration/Coordination Objective)

**Objective 9.6:** Support development of web-based resources to make information on community services more accessible and user-friendly. (Collaboration/Coordination Objective)

Increase Influence on  
Policy at Local, State,  
and Federal Levels

**Goal #10:**

Engage with other local, state, and national stakeholders on emerging issues.

**Objective 10.1:** Monitor implementation of State Plan amendments, 1115 waiver pilot projects, and Managed Care by the State of Illinois, and advocate through active participation in the Association of Community Mental Health Authorities of Illinois (ACMHA) and other statewide associations and advocacy groups. (Collaboration/Coordination Objective)

**Objective 10.2:** Track state implementation of class action suit settlements involving persons with intellectual and/or developmental disabilities or mental illness, e.g. Ligas Consent Decree and Williams Consent Decree, and advocate for the allocation of state resources sufficient to meet needs of clients returning to home communities or seeking fuller integration in their communities. (Policy Objective)

**Objective 10.3:** Maintain active participation in the National Association of County Behavioral Health and Developmental Disability Directors (NACHBDD), National Association of Counties (NACo), and like-minded national organizations, to understand trends, best practices, and innovations and to advocate at the national level. (Collaboration/Coordination Objective)

**Objective 10.4:** Monitor State actions to implement terms of the NB vs Norwood Consent Decree to improve access and treatment to children and youth for community based mental health and behavioral health care under the Early and Periodic Screening, Diagnostic, and Treatment (EPSDT) provisions of the Medicaid Act. (Policy Objective)

**Objective 10.5:** Advocate at the state and national levels on the issue of behavioral health and intellectual and developmental disability workforce shortages. (Policy Objective)

*Approved December 15, 2021*