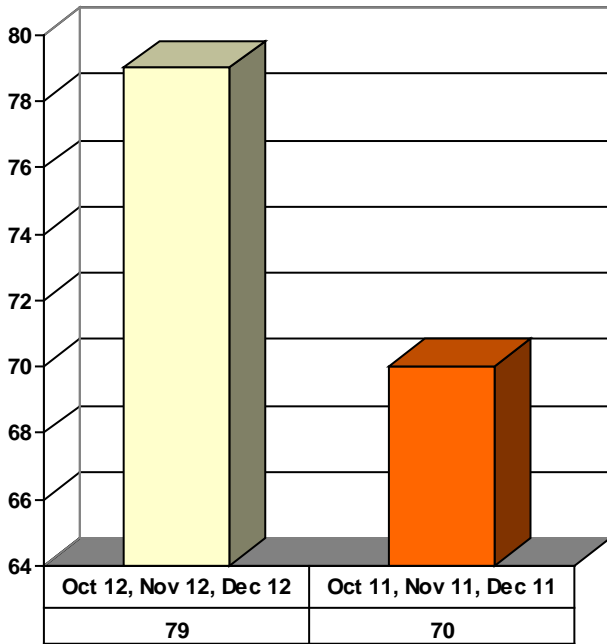
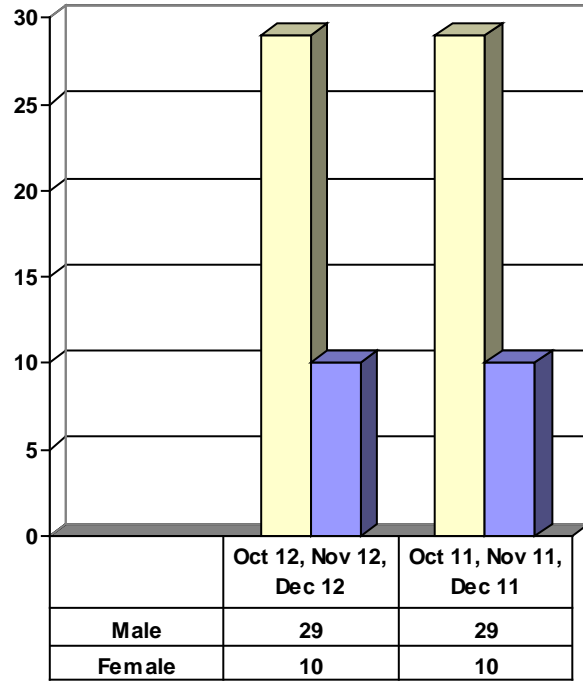


JUVENILE SUPERVISION INFORMATION
MONTHS OF OCTOBER 2012, NOVEMBER 2012 AND DECEMBER 2012
 (Compared against prior year information)

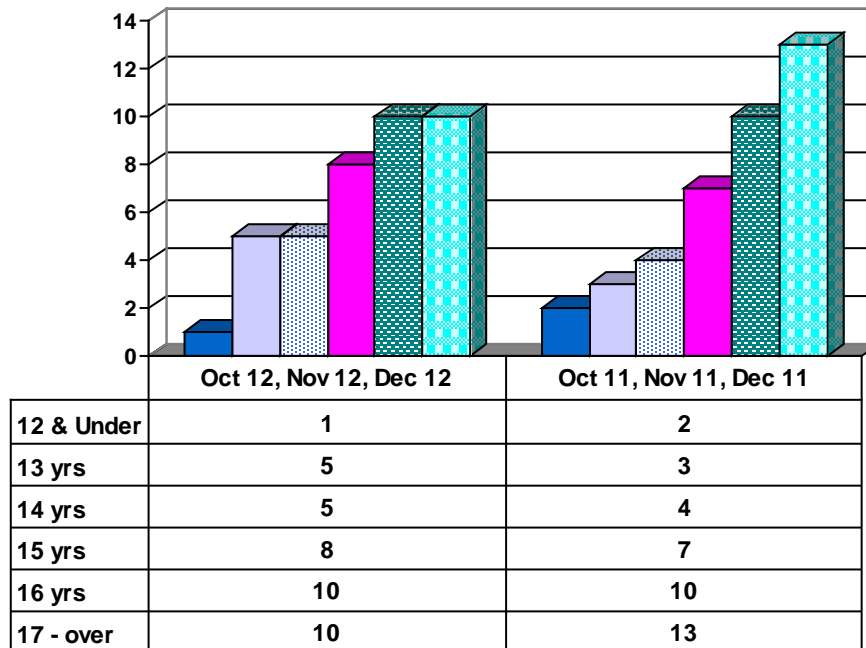
Juvenile Delinquency Petitions Filed



Demographics for Juvenile Admissions

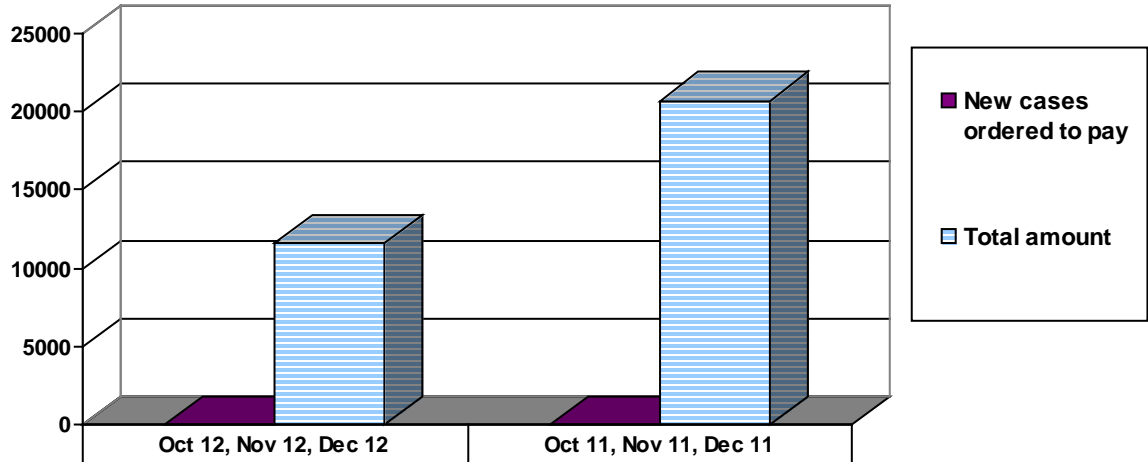


Age Demographics for Juvenile Admissions



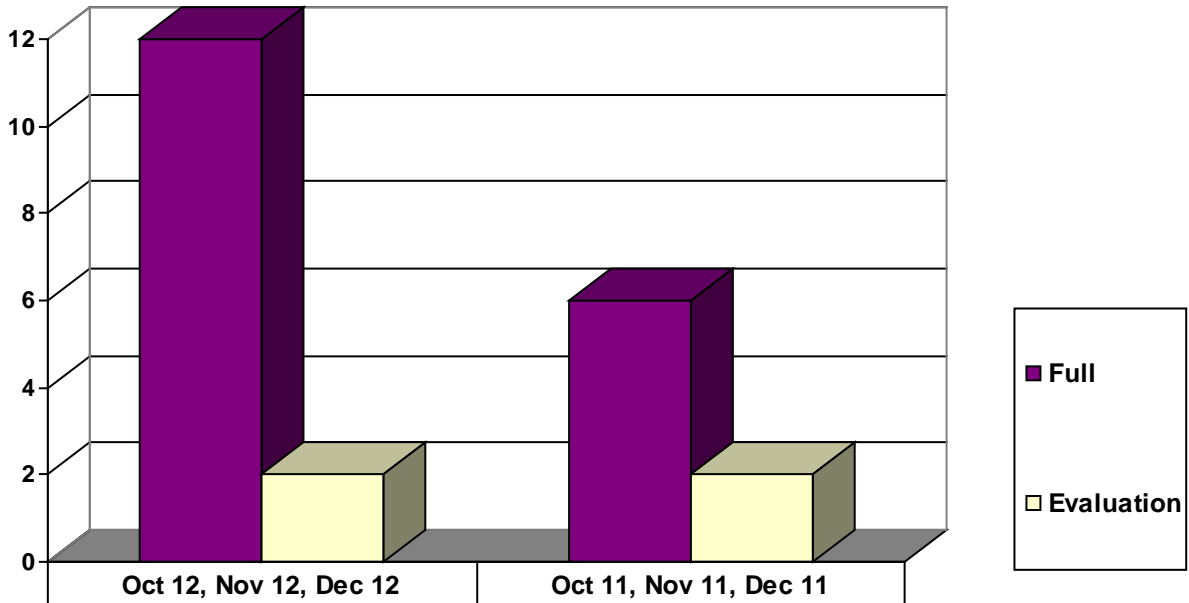
■ 12 & Under
 ■ 13 yrs
 ■ 14 yrs
 ■ 15 yrs
 ■ 16 yrs
 ■ 17 - over

Restitution Ordered in New Juvenile Cases



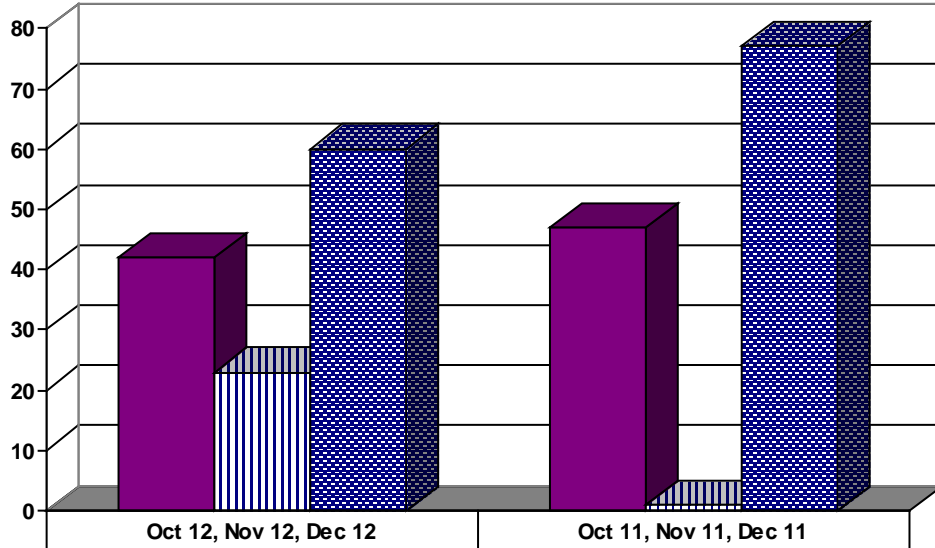
New cases ordered to pay	3	6
Total amount	\$11,602	\$20,713

Commitments to IDOJJ (Illinois Dept. of Juvenile Justice)



Full	12	6
Evaluation	2	2

Investigations Completed by Juvenile Unit



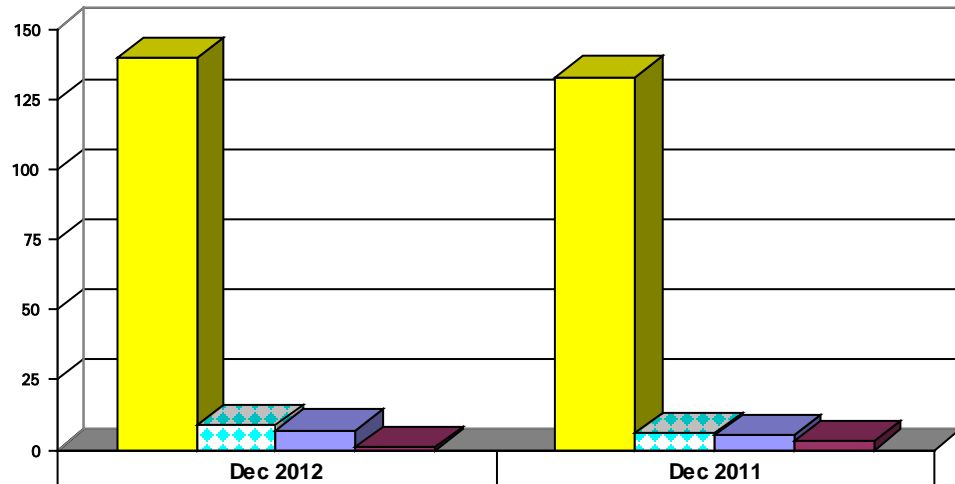
	Oct 12, Nov 12, Dec 12	Oct 11, Nov 11, Dec 11
Social Histories	42	47
Supplemental Social History	23	1
Remission/Review	60	77

■ Social Histories

▨ Supplemental Social History

■ Remission/Review

Juvenile Caseload at end of Dec 2012 compared to Dec 2011

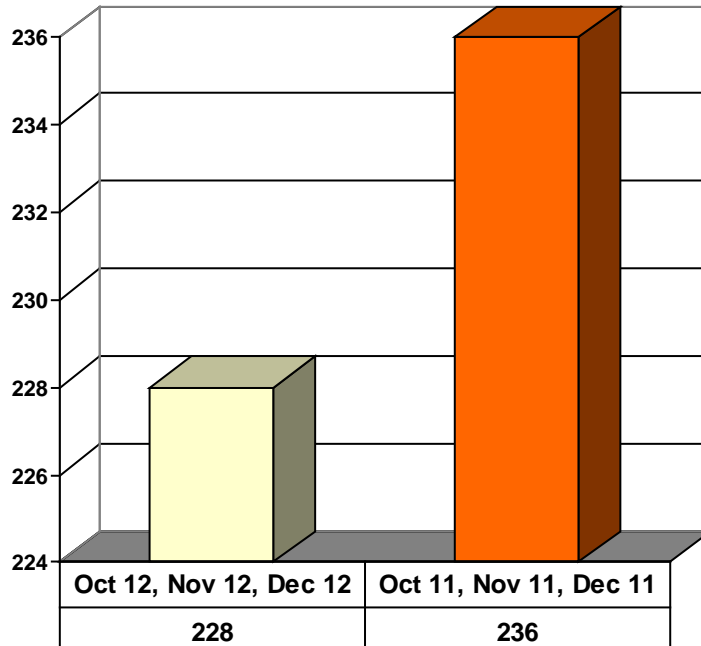


	Dec 2012	Dec 2011
Probation	140	133
Continued under Supervision	9	6
Informal	7	5
Other	1	3

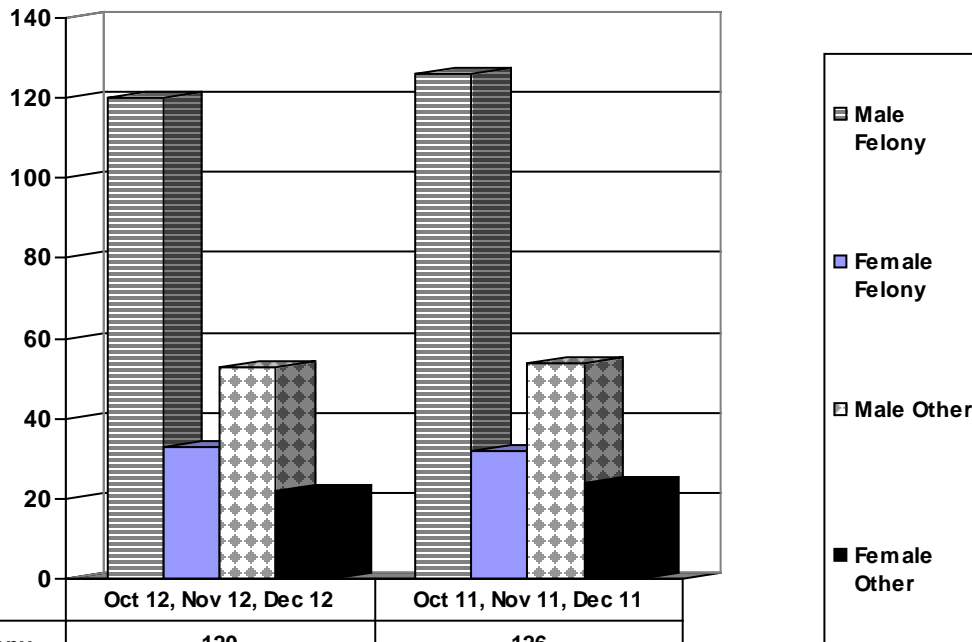
■ Probation ■ Continued under Supervision ■ Informal ■ Other

**ADULT SUPERVISION INFORMATION
MONTHS OF OCTOBER 2012, NOVEMBER 2012 AND DECEMBER 2012
(Compared against prior year information)**

Adult Intakes Completed

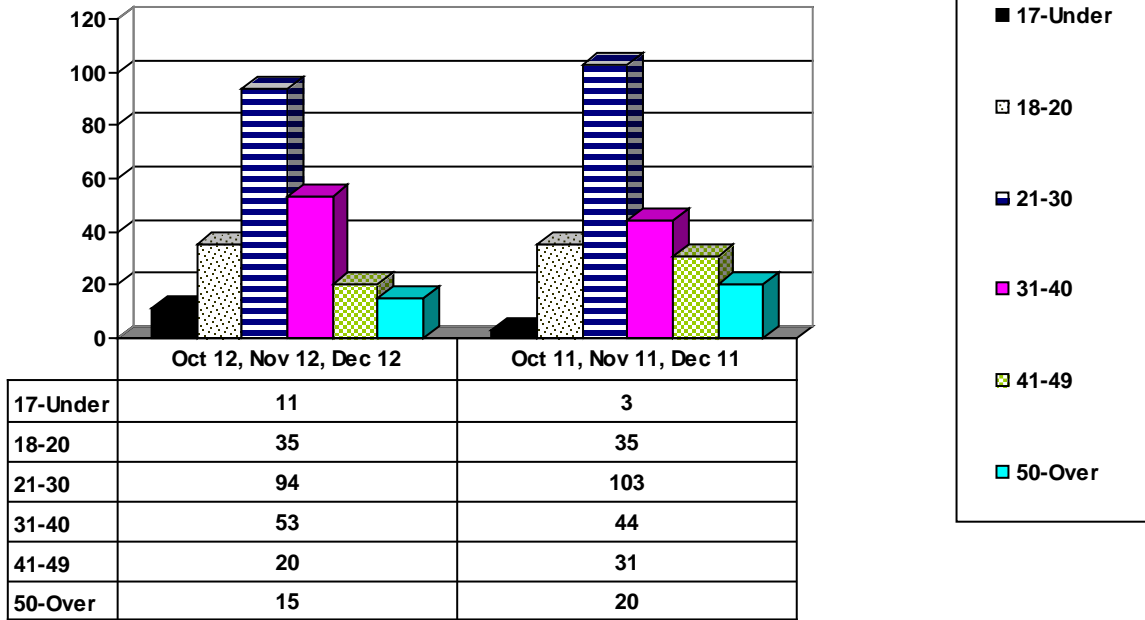


Demographics for Adult Intakes

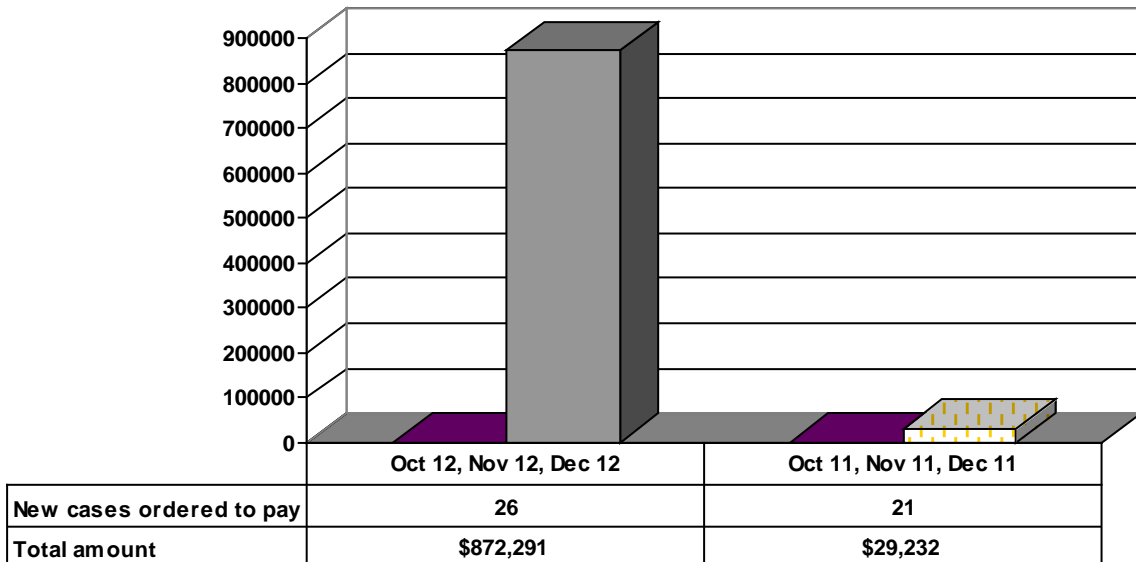


	Oct 12, Nov 12, Dec 12	Oct 11, Nov 11, Dec 11
Male Felony	120	126
Female Felony	33	32
Male Other	53	54
Female Other	22	24

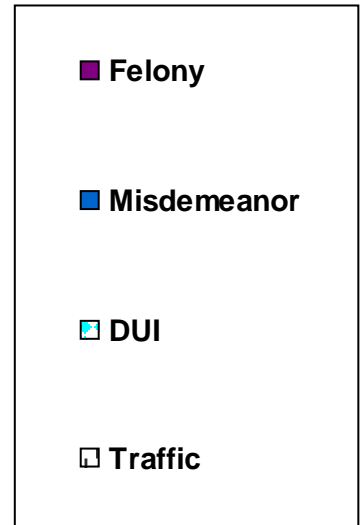
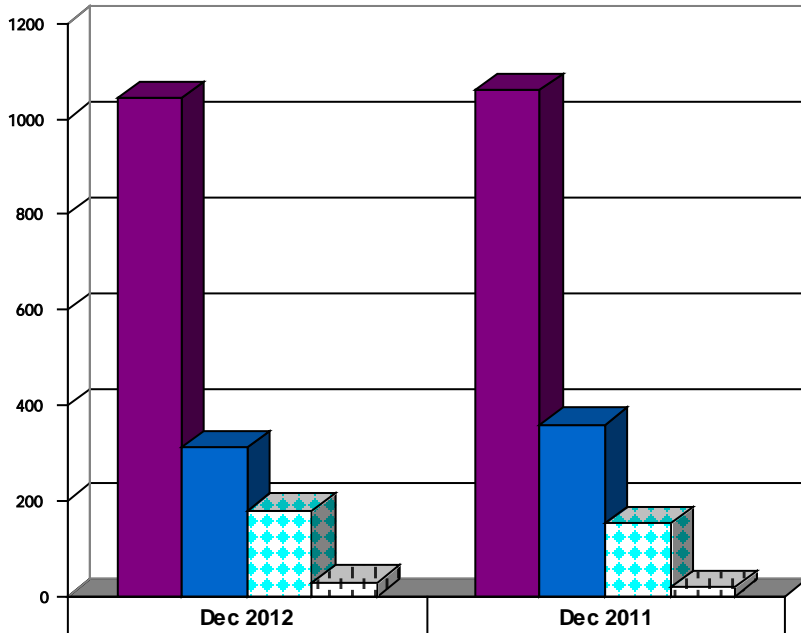
Age Demographics for Adult Intakes



Restitution Ordered in New Adult Cases

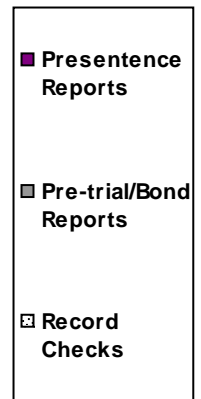
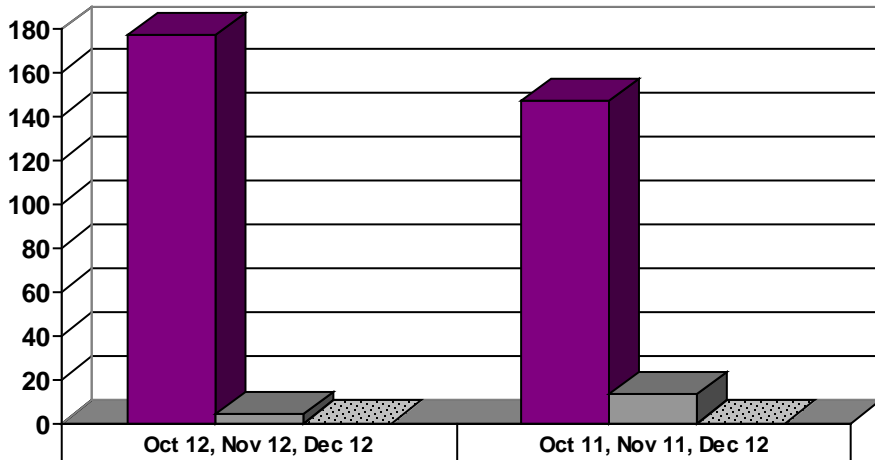


Breakdown of Adult Caseload at end of Reporting Periods



	Dec 2012	Dec 2011
Felony	1045	1061
Misdemeanor	311	360
DUI	180	153
Traffic	28	19

Adult Investigations Completed



	Oct 12, Nov 12, Dec 12	Oct 11, Nov 11, Dec 12
Presentence Reports	177	147
Pre-trial/Bond Reports	4	13
Record Checks	0	0

**Commitments to DOC
(Illinois Dept. of Corrections)**

