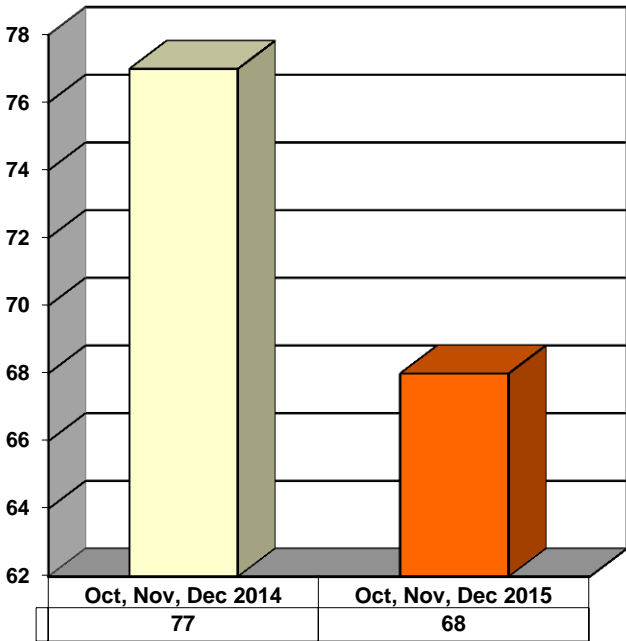
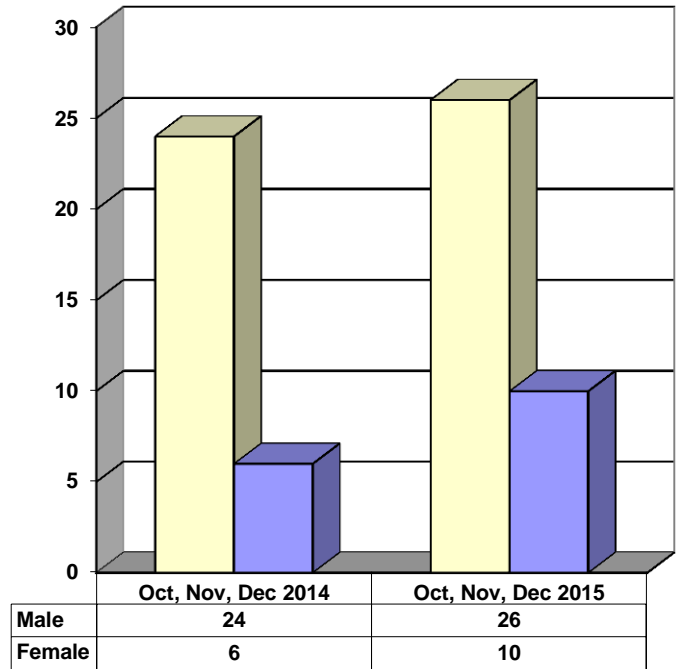


**JUVENILE SUPERVISION INFORMATION
MONTHS OF OCTOBER, NOVEMBER AND DECEMBER 2015
(Compared to Prior Year)**

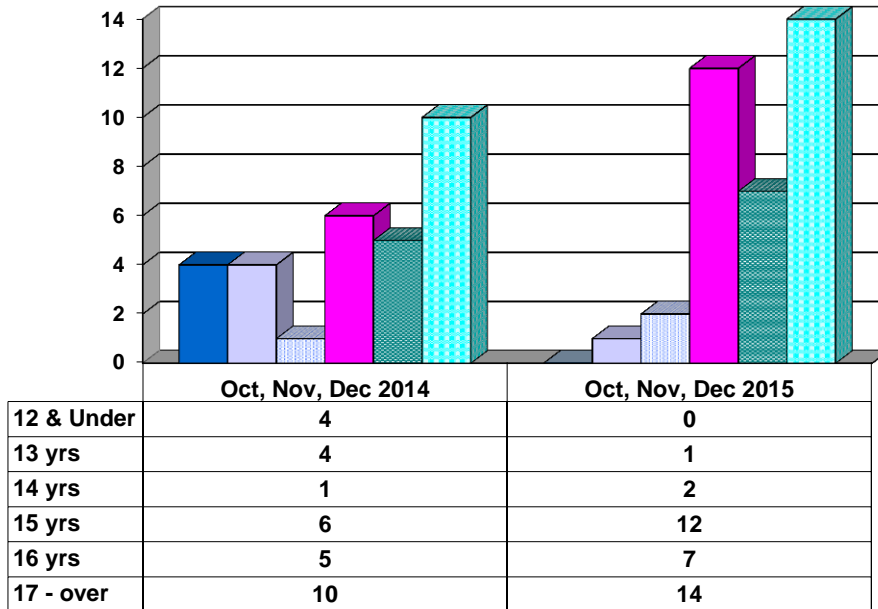
Juvenile Delinquency Petitions Filed



Gender Demographics for Juvenile Admissions

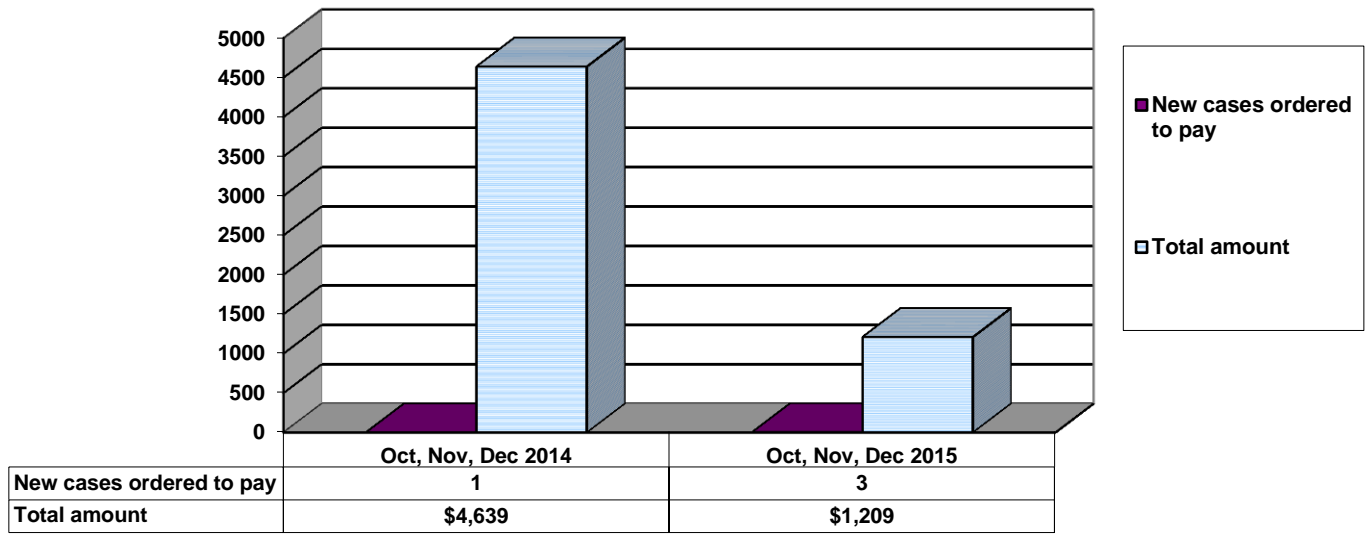


Age Demographics for Juvenile Admissions

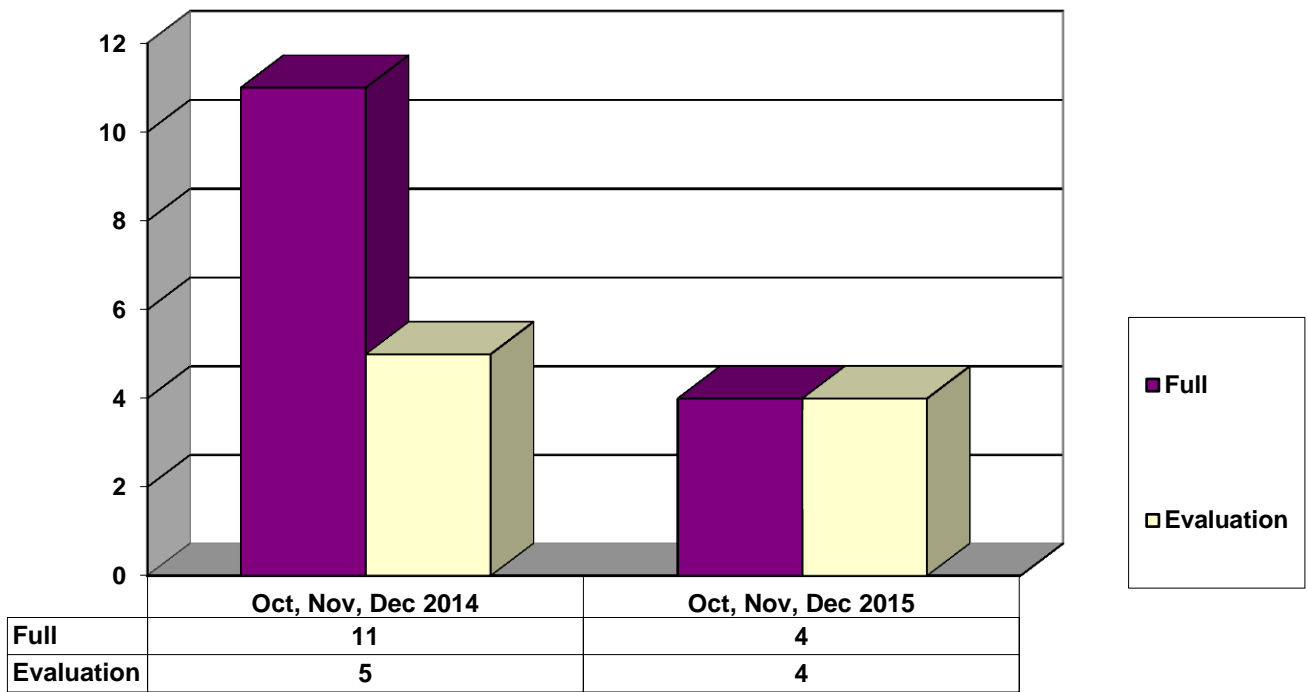


■ 12 & Under
 ■ 13 yrs
 ■ 14 yrs
 ■ 15 yrs
 ■ 16 yrs
 ■ 17 - over

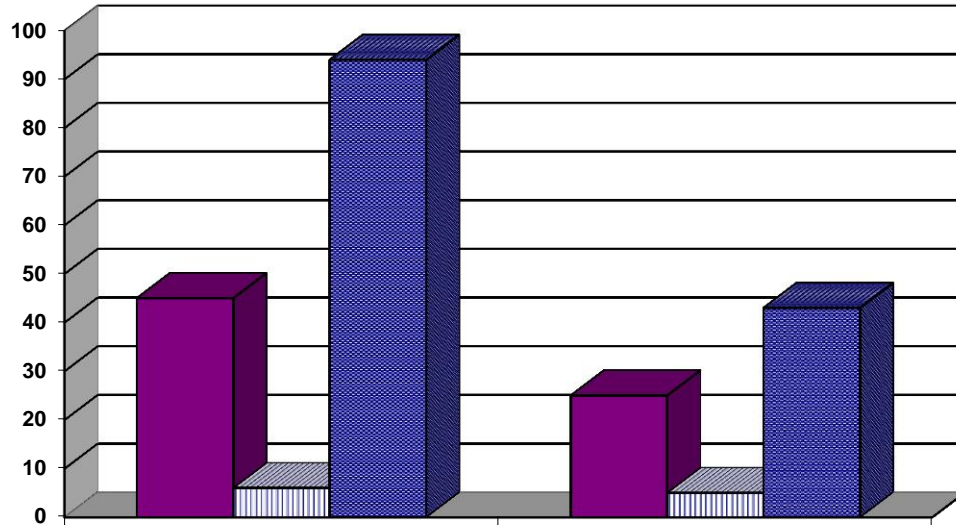
Restitution Ordered in New Juvenile Cases



Commitments to Illinois Department of Juvenile Justice



Investigations Completed by Juvenile Division



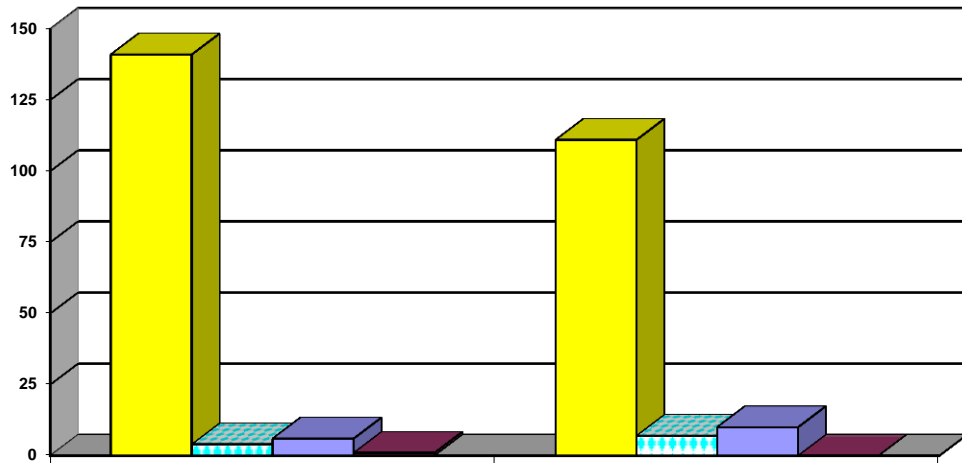
	Oct, Nov, Dec 2014	Oct, Nov, Dec 2015
Social Histories	45	25
Supplemental Social History	6	5
Remission/Review	94	43

■ Social Histories

▨ Supplemental Social History

■ Remission/Review

Juvenile Caseload at End of Reporting Periods



	December 2014	December 2015
Probation	141	111
Continued under Supervision	4	7
Informal	6	10
Other	1	0

■ Probation

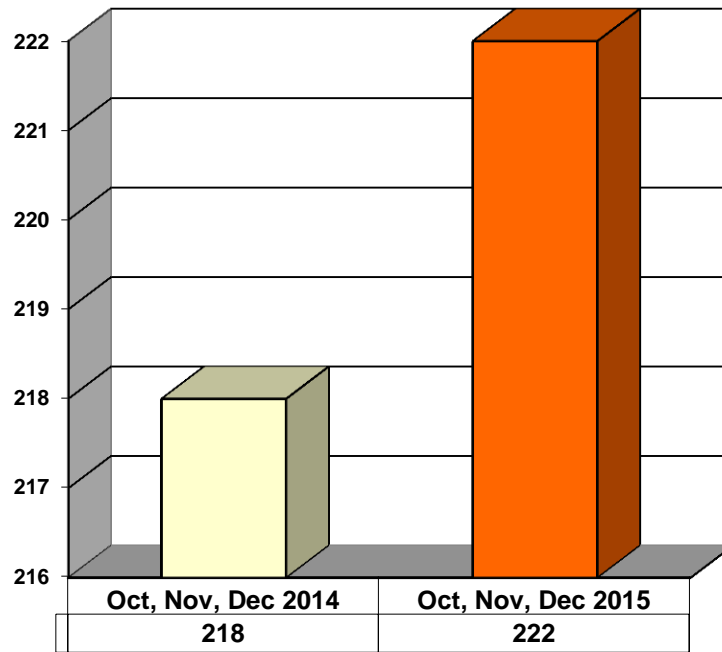
▨ Continued under Supervision

■ Informal

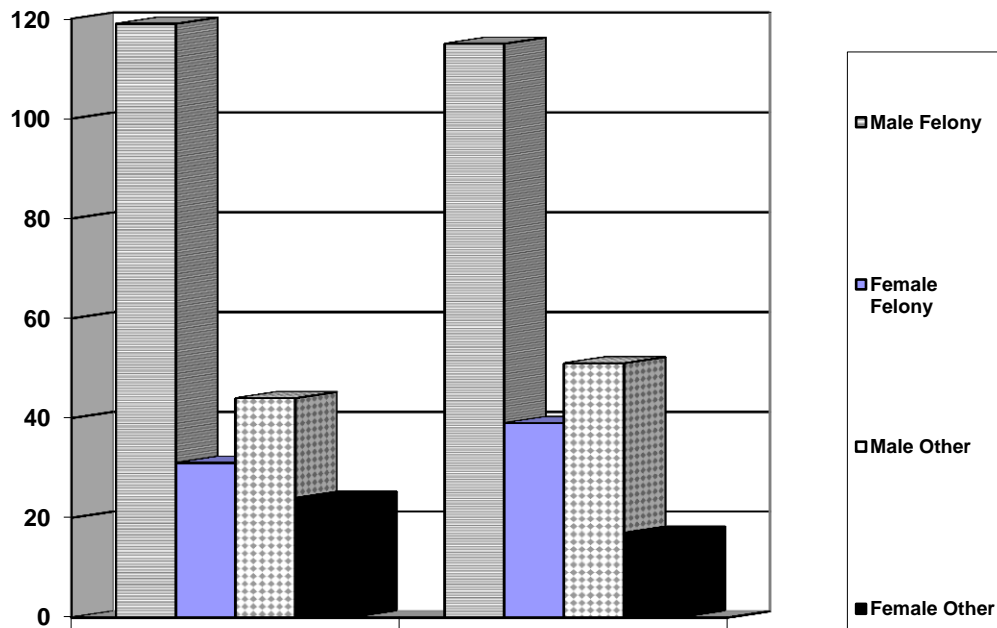
■ Other

**ADULT SUPERVISION INFORMATION
MONTHS OF OCTOBER, NOVEMBER AND DECEMBER 2015
(Compared to Prior Year)**

Adult Intakes Completed

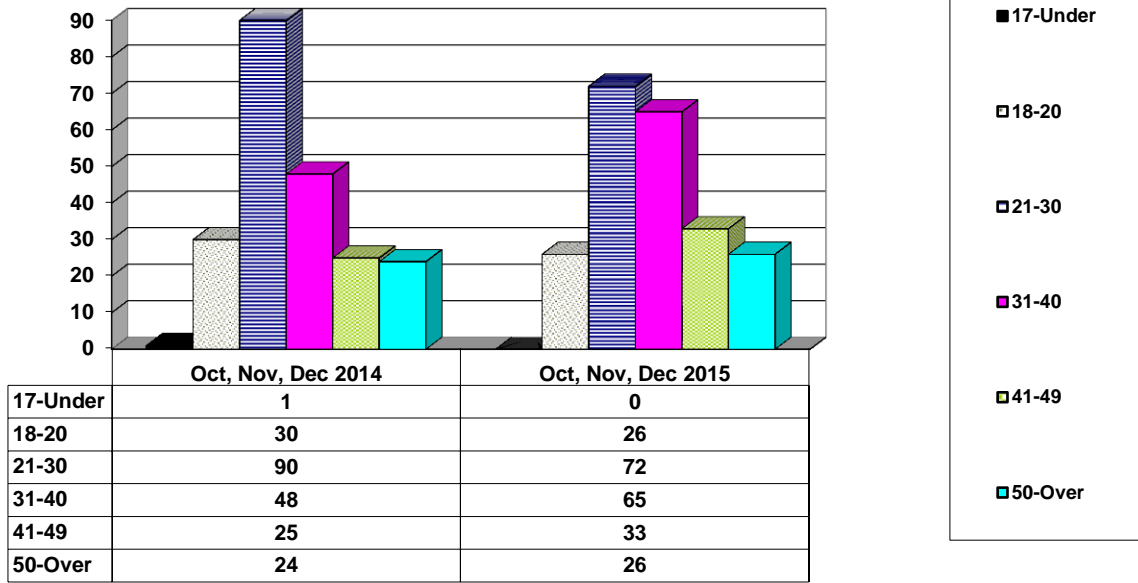


Gender Demographics for Adult Intakes

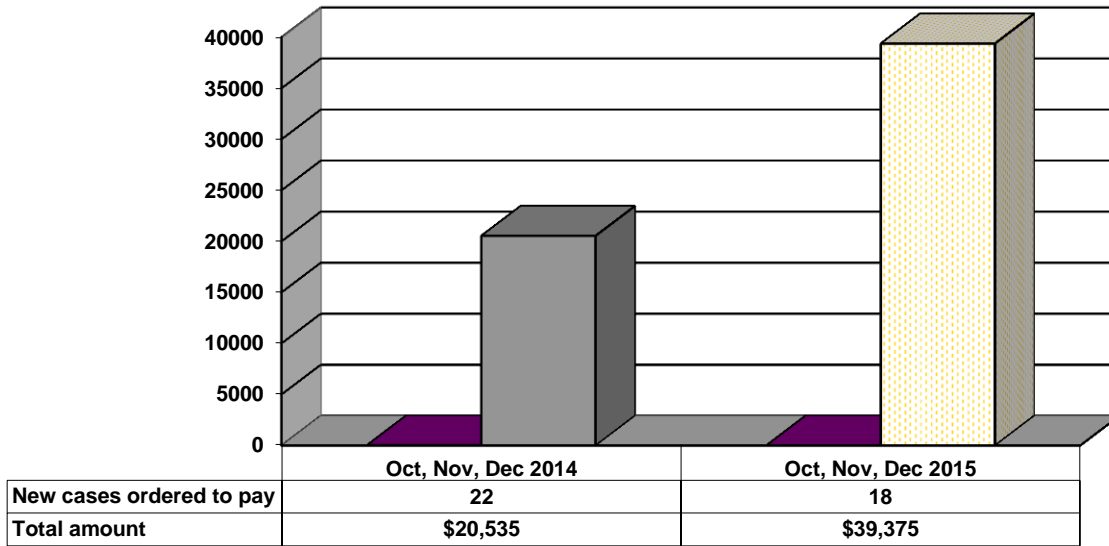


	Oct, Nov, Dec 2014	Oct, Nov, Dec 2015
Male Felony	119	115
Female Felony	31	39
Male Other	44	51
Female Other	24	17

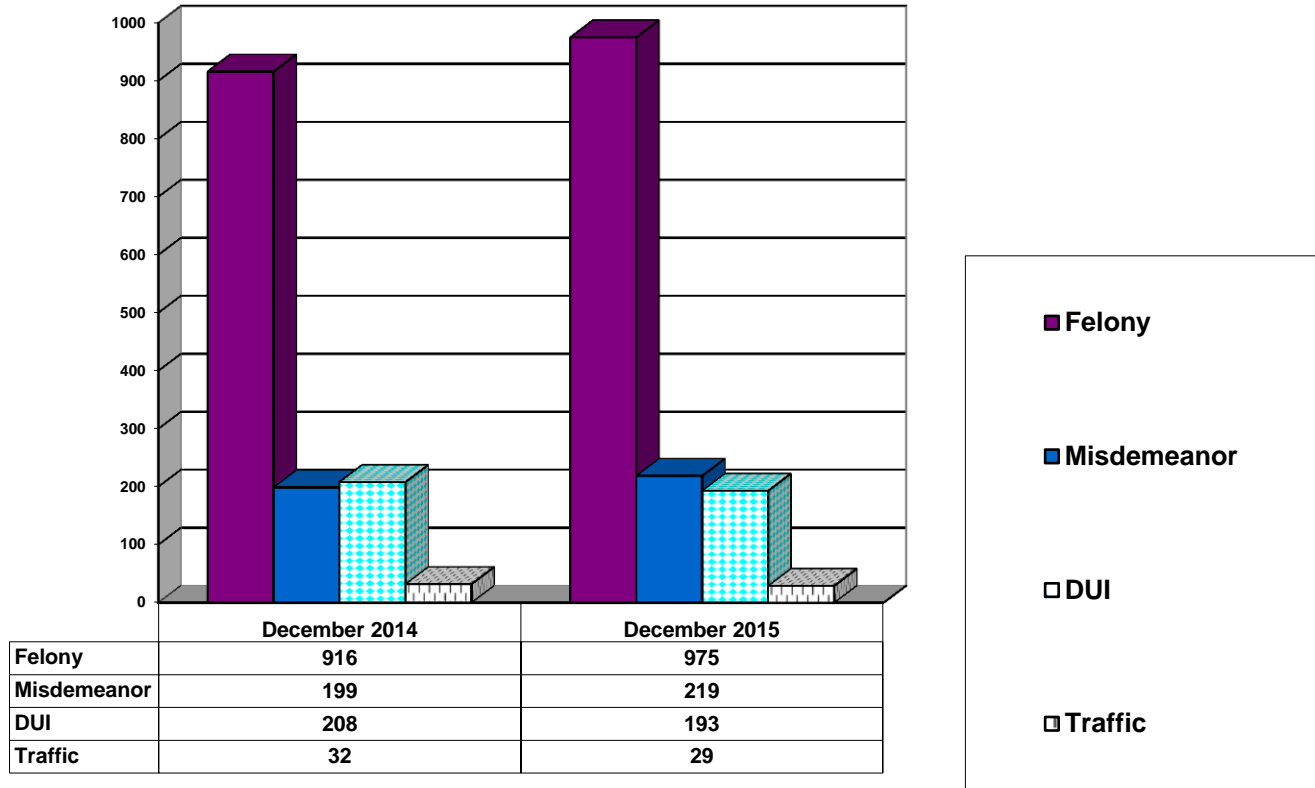
Age Demographics for Adult Intakes



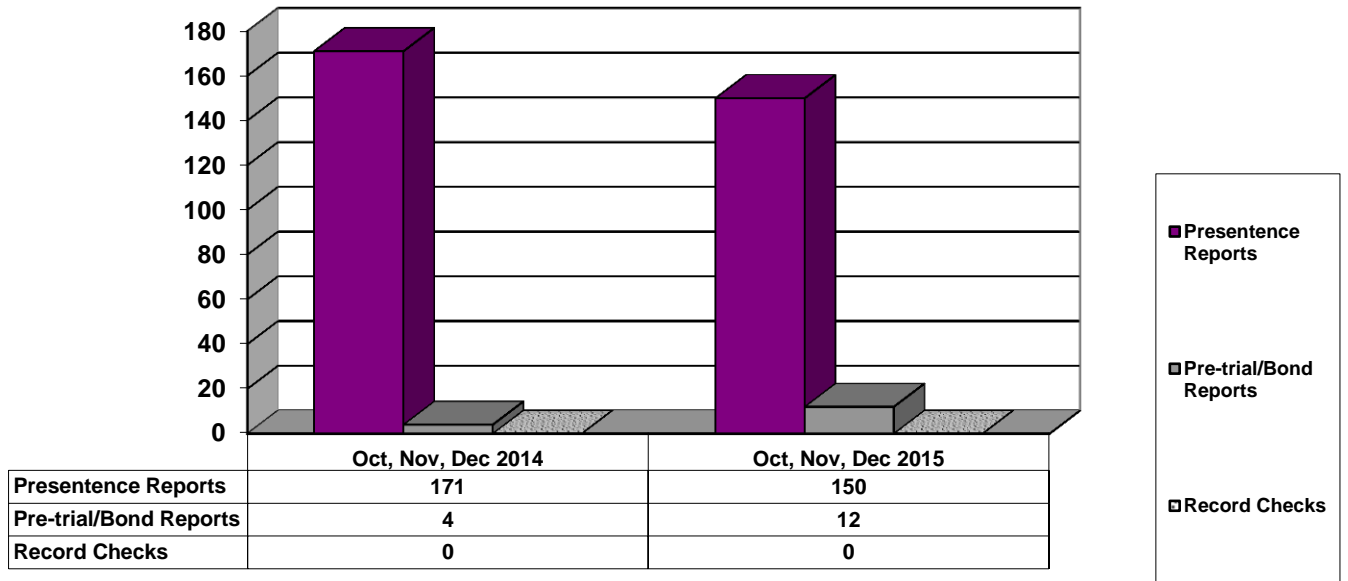
Restitution Ordered in New Adult Cases



Breakdown of Adult Caseload at End of Reporting Periods



Adult Investigations Completed



Commitments to Illinois Department of Corrections

